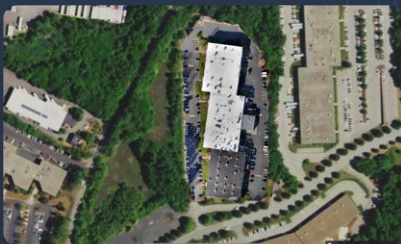
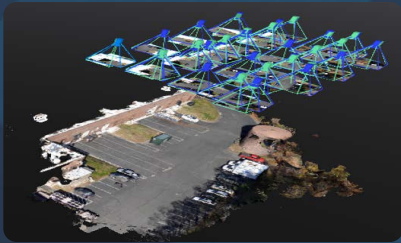
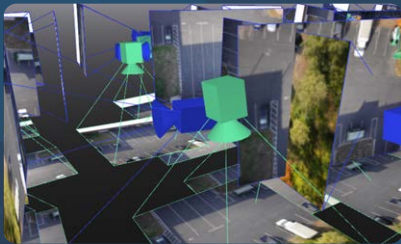


MAPPING & INSPECTION

3D Imaging & Photogrammetry

SPIRIT UAV FOR HIGH RESOLUTION DATA COLLECTION



MAPPING & INSPECTION APPLICATIONS

Survey & Mapping
 Photogrammetry
 Damage Assessment
 Accident Reconstruction
 Environmental & Conservation

Railway & Facilities
 Oil/Gas Inspection
 Rural Fire Mitigation
 Construction & Utilities Inspection
 Mining Operations

AIRFRAME DESIGN

DIMENSIONS

CORE WEIGHT

MAX TAKE OFF WEIGHT

MAX PAYLOAD*

MAX ENDURANCE*

MAX SPEED

ENVIRONMENTAL

OPERATING TEMP

WIND RESISTANCE

COMPACT

ALL-WEATHER

VERSATILE

SECURE SUPPLY CHAIN

PERFORMANCE

Coaxial

25.5 in x 4.2 in x 12 in

4.1 lbs

13.5 lbs

6.5 lbs

58 min

60+ mph

IP56

-40° to 130° F

40+ mph



Backpack Portable



Rain, Sleet, Snow and Sand



Payload and GCS Agnostic



NDAA + Blue sUAS Approved

MAPPING CONFIGURATION

SONY A6600 & Gimbal



35mm lens

24MP

4.25 lbs

Multiple GCS Options



*Max Payload with One Battery, *Max Endurance with No Payload

SPIRIT UAV FOR AERIAL MAPPING

Capture high-resolution aerial imagery to create 2D, 3D and topographic maps essential for public safety, government and industrial application.

