



Mia S M CU Chair

design Beatriz Sempere

Chair with sled base in steel. Hide seat.



Colors and Materials

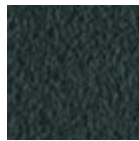
Structure



White Steel



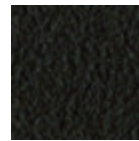
Sand Steel



Grafite Steel



Black Steel



Brown Steel



Pastel Yellow Steel



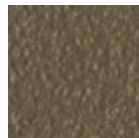
Light blue steel



Ocean Blue Steel



Bronze Steel



Fango Steel



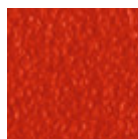
Light Grey Steel



Ocher Steel



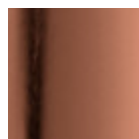
Facepowder Pink Steel



Red steel



Sage Green Steel



Pink Gold



Black Nickel



Golden Bronze

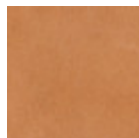
Coating



Hide
20 Colors



TK Hide
9 Colors



Tuscan Hide
3 Colors

Dimensions

Volumetric Details

Weight 8 Kg

Volume 0.33 mc

Package 1

Image not found or type unknown

	cm	inch
A	97	38.2
B	50	19.7
C	55	21.7
D	46	18.1

Downloads

[3D Mia \(zip\)](https://www.midj.com/images/uploads/resources/midj-mia-3d.zip) - <https://www.midj.com/images/uploads/resources/midj-mia-3d.zip>

Materials Certifications

Hide

FIRE RESISTANCE:

Technical Bulletin 117/00 sez E part. 1

EN 1021 parte 1/94, parte 2/94

BS 5852/90

PROPRIETIES AND ADVANTAGES

The hide is a hygienic and very practical product: it resists to wear, it's impermeable to water but, at the same time, the hide wicks air and sweat. The hide is obtained from the skin of bovines breeds and slaughtered for food purposes and subsequently treated with chromium salts.

CLEANING INSTRUCTIONS

Use only a damp, non abrasive cloth; do not use products containing solvents or alcohol that may damage the surface. It is advisable to test an invisible area of the product before cleaning it all. For good preservation of the product purchased, it is inadvisable to expose it to direct sunlight that may alter its features and colours. Any surface imperfections are natural features of hide and guarantee that it is an original product.

Materials Certifications

TK Hide

PROPRIETIES AND ADVANTAGES

The hide is a hygienic and very practical product: it resists to wear, it's impermeable to water but, at the same time, the hide wicks air and sweat. The hide is obtained from the skin of bovines breeds and slaughtered for food purposes and subsequently treated with chromium salts.

CLEANING INSTRUCTIONS

Use only a damp, non abrasive cloth; do not use products containing solvents or alcohol that may damage the surface. It is advisable to test an invisible area of the product before cleaning it all. For good preservation of the product purchased, it is inadvisable to expose it to direct sunlight that may alter its features and colours. Any surface imperfections are natural features of hide and guarantee that it is an original product.

Materials Certifications

Tuscan Hide

Tuscan Hide does not fear to get aged since the oldest it gets the more unique it becomes.

It is a material deriving from animal's leather which suffer a process called "vegetable tanning" with natural tannins and with the help of some products biologically compatible whether for the dyeing or for the finishing.

Any possible imperfection, sign, scar, stain of the Tuscan hide surface are a natural characteristics which

guarantees its originality.