



Diamante Extendable Table

Extendable table available in various sizes. Frame in lacquered steel. Top in melamine, laquered MDF, glass, anti-scratch glass and crystalceramic.



Colors and Materials

Structure



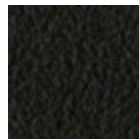
White Steel



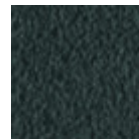
Black Steel



Sand Steel

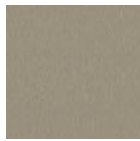


Brown Steel



Grafite Steel

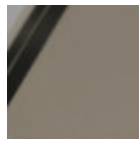
Coating



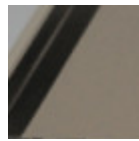
Melamine
8 Colors



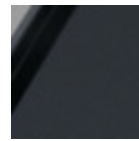
Laquered MDF
5 Colors



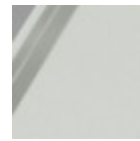
Glossy Sand Glass



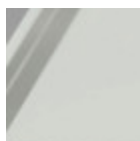
Matt Sand Antiscratch Glass



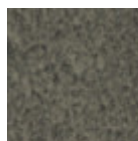
Matt Graphite Antiscratch Glass



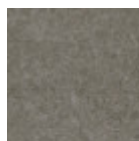
Extra Clear Matt White Antiscratch Glass



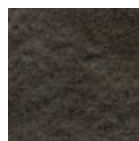
Extraclear Glossy White Glass



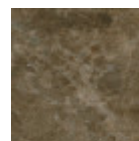
Lead Crystalceramic



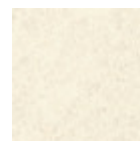
Cement Savoia Crystalceramic



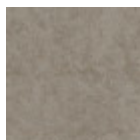
Charcoal Savoia Crystalceramic



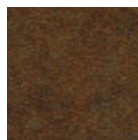
Emperador Marble Crystalceramic



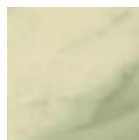
Oxide White Crystalceramic



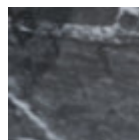
Oxide Sand Crystalceramic



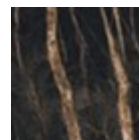
Corten Crystalceramic



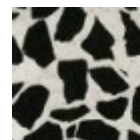
Crystalceramic with effect calacatta marble



Crystalceramic Glossy Black Greek Marble



Crystalceramic with effect noir desir marble



Venetian crystalceramic

Extensions



Melamine

8 Colors



Laquered MDF

5 Colors

Dimensions

Dimensions

Volumetric Details

Weight 107 Kg

Volume 0.46 mc

Package 4

Image not found or type unknown

| | A | B | C | D |
|--------------------|-------------|-------------|-------------|-------------|
| | (cm) | (cm) | (cm) | (cm) |
| | (inch) | (inch) | (inch) | (inch) |
| 120/170x80 | | | | |
| (cm) | 75 | 120 | 80 | 170 |
| (inch) | 29.5 | 47.2 | 31.5 | 66.9 |
| 140/190x90 | | | | |
| (cm) | 75 | 140 | 90 | 190 |
| (inch) | 29.5 | 55.1 | 35.4 | 74.8 |
| 160/260x90 | | | | |
| (cm) | 75 | 160 | 90 | 260 |
| (inch) | 29.5 | 63 | 35.4 | 102.4 |
| 190/290x100 | | | | |
| (cm) | 75 | 190 | 100 | 290 |
| (inch) | 29.5 | 74.8 | 39.4 | 114.2 |