



Calla P M_T PP Armchair

design Fabrizio Batoni, 2019

Calla armchair with steel sled base. Polypropylene seat. The version with lacquered base in matt finish and polypropylene seat is suitable for outdoor use. Optional: cushion upholstered in leather, faux leather or fabric, for indoor use only.

When the plastic shell and cushion merge into a delicate synergy, the design becomes more precious and the comfort even greater.



Colors and Materials

Structure



White Steel



Sand Steel



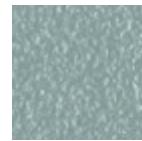
Pastel Yellow Steel



Grafite Steel



Black Steel



Light blue steel



Ocean Blue Steel



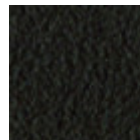
Bronze Steel



Fango Steel



Light Grey Steel



Brown Steel



Ocher Steel



Facepowder Pink Steel

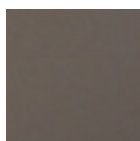


Red steel



Sage Green Steel

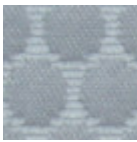
Coating



Polypropylene

9 Colors

Extensions



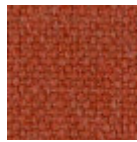
Bubble Fabric

14 Colors



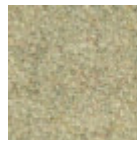
Carabù Fabric

15 Colors



Cotton Club Fabric

13 Colors



Fenix Wool Fabric

13 Colors



Hot Fabric

14 Colors



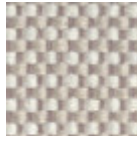
Main Line Flax Fabric

16 Colors



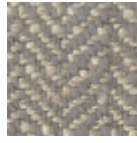
Mirage Fabric

6 Colors



Scubidù Fabric

10 Colors



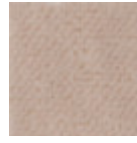
Second Fabric

11 Colors



Visual Fabric

11 Colors



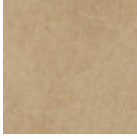
Velvet Superb

15 Colors



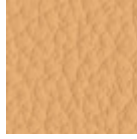
Secret Faux Leather

22 Colors



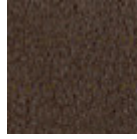
Vintage Faux Leather

12 Colors



Fiore Leather

18 Colors



Vintage Leather

4 Colors

Dimensions

Dimensions

Volumetric Details

Weight 7 Kg

Volume 0.26 mc

Package 1

Image not found or type unknown

	cm	inch
A	78	30,7
B	52	20,5
C	55	21,7
D	46	18,1
E	68	26,8