



# Calla P65 M PP Stool

design Fabrizio Batoni, 2019

Bar stool with four legs base in lacquered steel and plastic shell.  
Optional: cushion upholstered in fabric, leather or faux leather. The stool in the version with plastic shell is also available in the version for outdoor use.



## Colors and Materials

### Structure



White Steel



Sand Steel



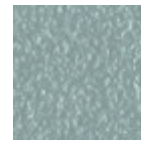
Pastel Yellow Steel



Grafite Steel



Black Steel



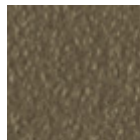
Light blue steel



Ocean Blue Steel



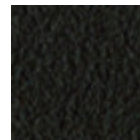
Bronze Steel



Fango Steel



Light Grey Steel



Brown Steel



Ocher Steel



Facepowder Pink Steel

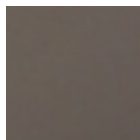


Red steel



Sage Green Steel

### Coating



Polypropylene

9 Colors

## Dimensions

## Dimensions

Image not found or type unknown

	<b>cm</b>	<b>inch</b>
<b>A</b>	98	38,6
<b>B</b>	52	20,5
<b>C</b>	52	20,5
<b>D</b>	66	26
<b>E</b>	88	34,6