

Apelle Trio Coffee Table

design Beatriz Sempere, 2013

Apelle Trio coffe table with structure in white, black lacquered steel, pink gold or black nickel. Tops in ceramic or upholstered in hide.



Colors and Materials

Structure



White Steel



Black Steel



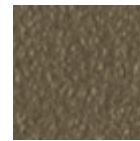
Sand Steel



Brown Steel



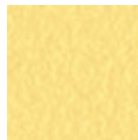
Grafite Steel



Fango Steel



Bronze Steel



Pastel Yellow Steel



Ocher Steel



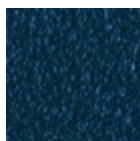
Red steel



Sage Green Steel



Light blue steel



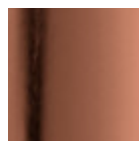
Ocean Blue Steel



Light Grey Steel



Facepowder Pink Steel



Pink Gold



Black Nickel

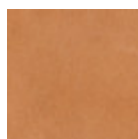


Golden Bronze

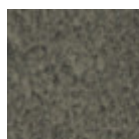
Coating



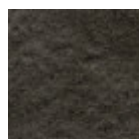
Hide
20 Colors



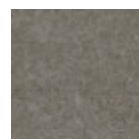
Tuscan Hide
3 Colors



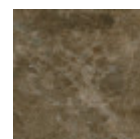
Lead Ceramic



Charcoal Savoia Ceramic



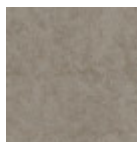
Cement Savoia Ceramic



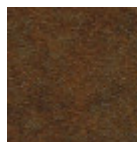
Emperador Marble Ceramic



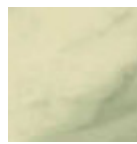
Oxide White Ceramic



Oxide Sand Ceramic

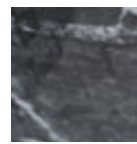


Corten Ceramic

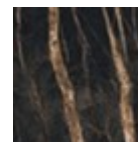


Ceramic with effect calacatta marble

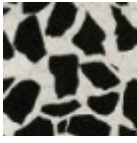
1 color



Black greek glossy marble ceramic



Noir desir glossy ceramic marble



Venetian glossy ceramic

Dimensions

Dimensions

Volumetric Details

Weight 15 Kg

Volume 0,25 mc

Package 1

Image not found or type unknown

	A (cm) (inch)	B (cm) (inch)	C (cm) (inch)
Apelle TRIO (cm)	55	71	62
(inch)	21.7	28	24.4

Downloads

3ds Apelle Trio (zip) - <https://www.midj.com/images/uploads/resources/3ds-midj-apelle-trio.zip>

Materials Certifications

Hide

FIRE RESISTANCE:

Technical Bulletin 117/00 sez E part. 1

EN 1021 parte 1/94, parte 2/94

BS 5852/90

PROPRIETIES AND ADVANTAGES

The hide is a hygienic and very practical product: it resists to wear, it's impermeable to water but, at the same time, the hide wicks air and sweat. The hide is obtained from the skin of bovines breeds and slaughtered for food purposes and subsequently treated with chromium salts.

CLEANING INSTRUCTIONS

Use only a damp, non abrasive cloth; do not use products containing solvents or alcohol that may damage the surface. It is advisable to test an invisible area of the product before cleaning it all. For good preservation of the product purchased, it is unadvisable to expose it to direct sunlight that may alter its features and colours. Any surface imperfections are natural features of hide and guarantee that it is an original product.

Materials Certifications

Tuscan Hide

Tuscan Hide does not fear to get aged since the oldest it gets the more unique it becomes.

It is a material deriving from animal's leather which suffer a process called "vegetable tanning" with

natural tannins and with the help of some products biologically compatible whether for the dyeing or for the finishing.
Any possible imperfection, sign, scar, stain of the Tuscan hide surface are a natural characteristics which guarantees its originality.