

Trampoliere OUT H65 / H75 Stool

design Roberto Paoli, 2013

Trampoliere stool in lacquered steel; available in two different heights 65 cm (25.6 in) and 75 cm (29.5 in).

Trampoliere stool is stackable up to four units and suitable for outdoor use.



Colors and Materials

Structure



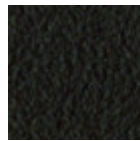
White Steel



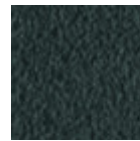
Black Steel



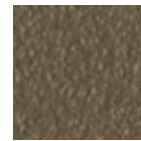
Sand Steel



Brown Steel



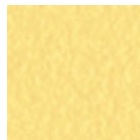
Grafite Steel



Fango Steel



Bronze Steel



Pastel Yellow Steel



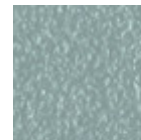
Ocher Steel



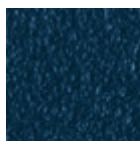
Red steel



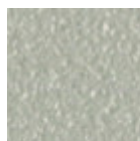
Sage Green Steel



Light blue steel



Ocean Blue Steel



Light Grey Steel



Facepowder Pink Steel

Dimensions

Image not found or type unknown

Dimensions

	A	B	C	
	(cm)	(cm)	(cm)	
	(inch)	(inch)	(inch)	

H65				
(cm)	76	46	42	65
(inch)	29.9	18.1	16.5	25.6

	A	B	C	
	(cm)	(cm)	(cm)	
	(inch)	(inch)	(inch)	
H75	86	46	42	75
(cm)	33.9	18.1	16.5	29.5
(inch)				

Volumetric Details

Weight 8.1 Kg

Volume 0.2 mc

Package 1

Downloads

[3D Trampoliere \(zip\)](https://www.midj.com/images/uploads/resources/trampoliere-h65-h75-out-3d.zip) - <https://www.midj.com/images/uploads/resources/trampoliere-h65-h75-out-3d.zip>