

Antenna / Antena

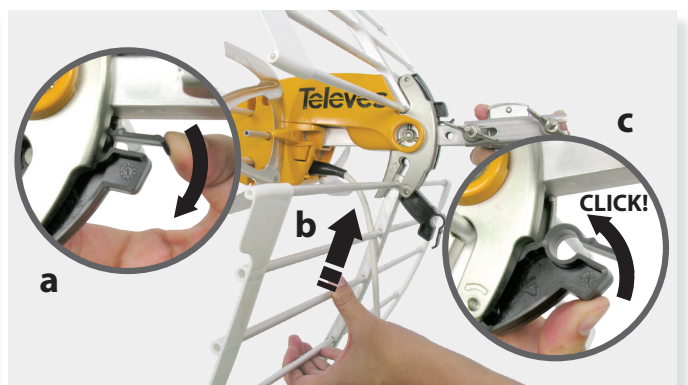
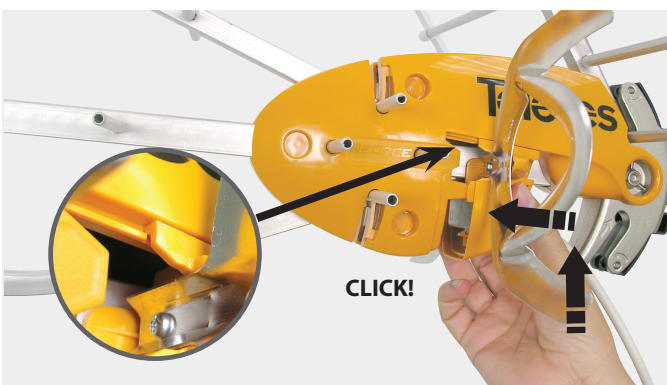
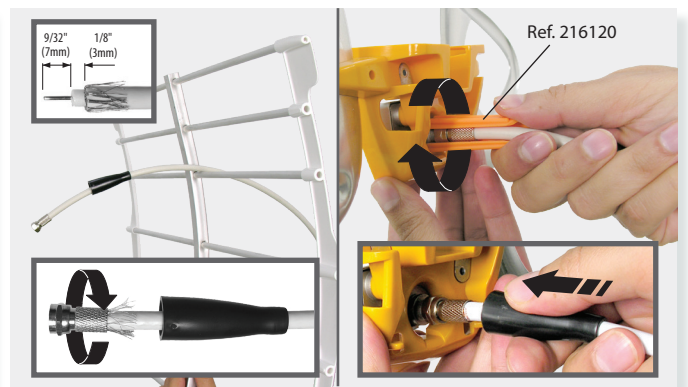
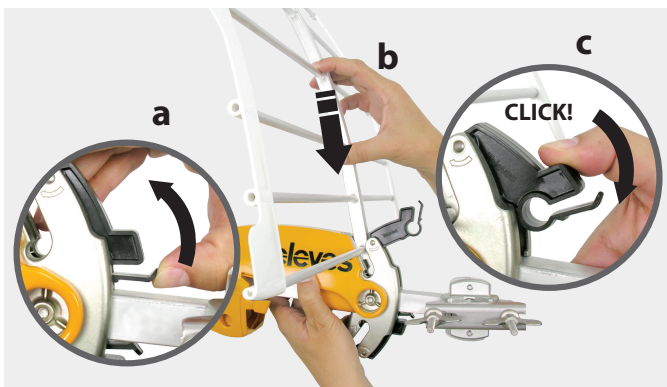
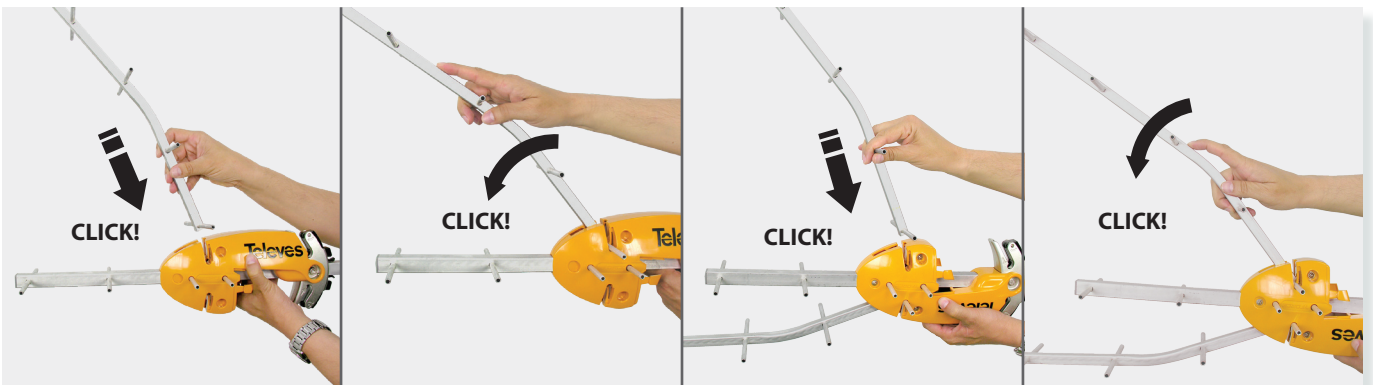
Ref. 148920

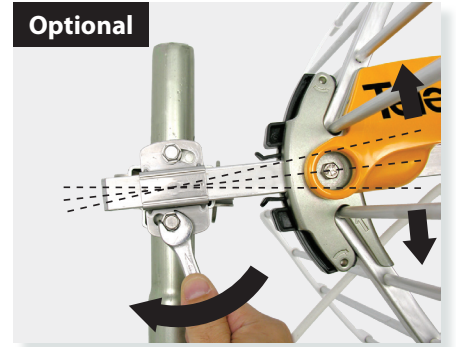
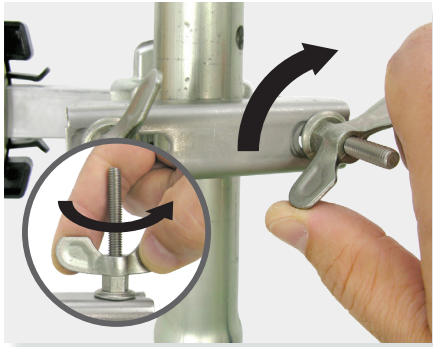
Kit: 148981

Ellipse

POWERED BY
T.FORCE

KIT	COMPOSITION
148981	148920 + 550104





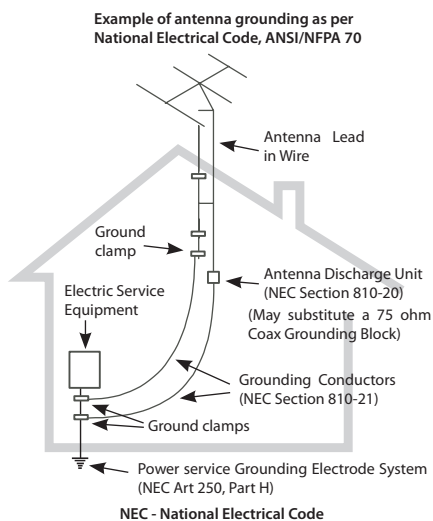
Safety Instructions:

LIGHTNING PROTECTION

- ◆ If installed outdoors, be sure the antenna system is grounded so as to provide protection against voltage surges and built-up static charges. Section 810 of the National Electrical Code ANSI/NFPA70, or CSA C22.1 sections 10, 16, and 54, of the Canadian Electrical Code, provide information with respect to proper grounding of the mast and supporting structure, grounding of the antenna lead-in wire to an antenna discharge unit, size of grounding conductors, location of antenna-discharge unit, connection to grounding electrodes, and requirements for the grounding electrode (see figure and instructions).
- ◆ Mount the lightning arrester or 75 ohm coaxial grounding block as close as possible to where the 75 ohm coaxial cable downlead enters the house.
- ◆ The ground wires for both the mast and the downlead should be copper or aluminum wire, number eight (8) or larger.
- ◆ The downlead wire from the antenna to the lightning arrester and the mast ground wire should be secured to the house, spaced from four (4) to six (6) feet apart.
- ◆ In the case of a "ground up" antenna installation it may not be necessary to ground the mast if the mast extends four or more feet in the earth. Consult a TV serviceman for the proper depth in your location.

WARNINGS

- ◆ To prevent fire or shock hazard, do not expose the included power supply to rain or moisture.
- ◆ Installation of off-air antennas near power lines is dangerous. For your safety, follow the installation instructions.
- ◆ Any alteration or modification to the product or usage not in accordance with product instructions voids the warranty.



Technical specifications of the intelligent antenna (it must be powered)

Características técnicas de la antena inteligente (debe estar alimentada)

Ref.	Ref.	148920
Working band	Banda de trabajo	MHz 470 - 698 (CH14 - CH51)
Mode	Modo	INTELLIGENT (BOSS ON)
Gain	Ganancia	dBi 38 ±2
Output level	Nivel de salida	Auto ⁽¹⁾
Noise figure	Figura de ruido	dB 2,5 (typ)
Signal level of use (recomm.)	Nivel de señal de uso (recomend.)	dBµV < 75
Powering voltage	Tensión de alimentación	V _{DC} 12-24
Consumpt.	Consumo	mA 40 (max)
Beamwidth	Ancho de haz	° 30
F/B ratio	Relación D/A	dB >20
Wind load	Carga al viento	N 96 (@ 80 mph) 132 (@ 93 mph)

Antenna Selector

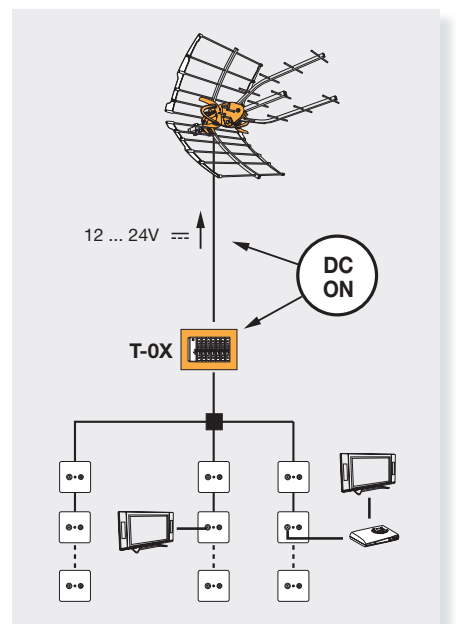
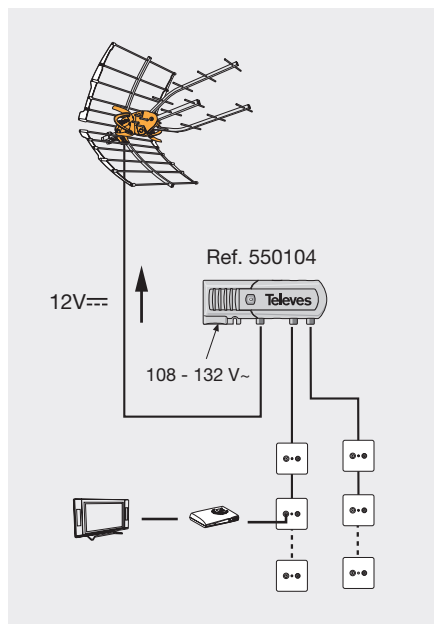
This antenna works in the following zone(s).

© Consumer Electronics Association

See the TV Antenna Selector Map to find the zone in which you live.

ellipse.televes.com

⁽¹⁾ - The gain is automatically adjusted according to the output level.
- La ganancia varía automáticamente en función del nivel de salida.



EN - Hereby, Televes S.A. declares that the radio equipment type ELLIPSE is in compliance with Directive 2014/53/EU. The full text of the EU declaration of conformity is available at the following internet address: <https://doc.televes.com>.
ES - Por la presente, Televes S.A. declara que el tipo de equipo radioeléctrico ELLIPSE es conforme con la Directiva 2014/53/UE. El texto completo de la declaración UE de conformidad está disponible en la dirección Internet siguiente: <https://doc.televes.com>.

