



Pro Educator PE-900

Owner's Manual

E-Collar Technologies, Inc.

Welcome to the World of E-Collar Training

Congratulations on your purchase of this E-Collar Pro Educator training system. We are confident that your e-collar training system will exceed your expectations.

We have taken great care to provide ample safety features to assure pleasant experience for you and your dog.

Finding best-suited training method with loving heart is essential for you and your dog. Soft leash pressure and low stimulation combined with consistent training techniques are more effective. The use of the training system should be part of an overall training program. Be cautious using high levels of stimulation should only be used as a last resort and in life-threatening situations.

We recommend that you are able to employ the features and functions of your E-Collar Pro Educator to their fullest by familiarize yourself with the safety instructions in the owner's manual before first use. To access more advanced features of your E-Collar Pro Educator system; please refer to online resources and to our customer service. Consult our friendly and qualified customer service to inquire information on effective and comprehensive low-level training and trainer in your area.

Thank you for choosing E-Collar Pro Educator dog-training system.

* This guide will assist you with basic functions, programming features and contents of the Pro Educator.

Additional information and help is available on www.ecollar.com and by e-mailing customerservice@ecollar.com.

Please contact our customer service department, 8 AM to 8 PM E.S.T., 1-855-326-5527 or (260) 357-0051.

TABLE OF CONTENTS

Preparing Device

- Important Notice 3
- Package Contents 4
- Device Composition 5
- How To Charge Devices 6
- Turning ON/OFF the PE-900 7
- How to Fit the Collar Corretly 8
- How to change the Contact points 9

How to use Device

- LCD Display Description 10
- Default Button Preset & Usage 11
- How to Find Proper Intensity Level 11
- How to Program Stimulation Buttons 12
- Lock & Unlock Stimulation Level 12
- How to use Instant Stimulation 13
- Boost Level setup 13
- Night Tracking Light 14
- Lost Transmitter 14
- Two Button Booster 15
- Warning Mode 15
- How to Replace for New Receiver by Pairing 16
- How to Add a Collar for Multi Dog System 17

Additional Device Information

- Important Traning Tips 18
- Troubleshooting 19
- Warrenty and Registration 20
- Safety and General Information 21

Important Notice

Caution

This product is not intended to be used on human beings.

E-Collar Technologies, Inc. is not responsible for any misuse of this product including damages from dog bites and lost items. Seek evaluation by professional trainer before use for aggressive dogs. It is common for aggressive dogs to associate the stimulation with the handler and take action against the handler. Sometimes dogs put under e-collar pressure during a fight can exhibit redirected aggression and become more aggressive.

At the default setting, stimulation level is not locked. To prevent giving accidental shock, lock proper stimulation level for dog's safety.

The maximum range of Educator 900 Series may vary according to terrain, weather condition, green area, or telephone pole as well as radio wave from other radio devices.

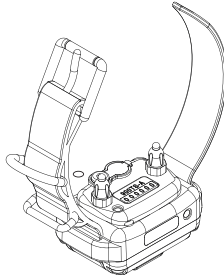
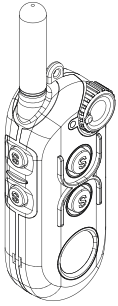
E-Collar 900 Series provide connecting with PC. You can change most of options by using computer tool which can download at <http://ecollar.com>.

Vibration type and Tone type are changeable by computer tool only.

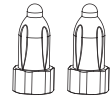
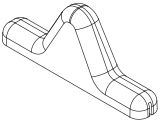
04

PACKAGE CONTENTS

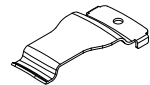
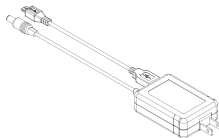
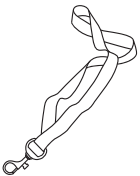
- Ergonomic Transmitter
- Waterproof Collar Receiver + High Quality Biothane Strap
- Owner's Manual



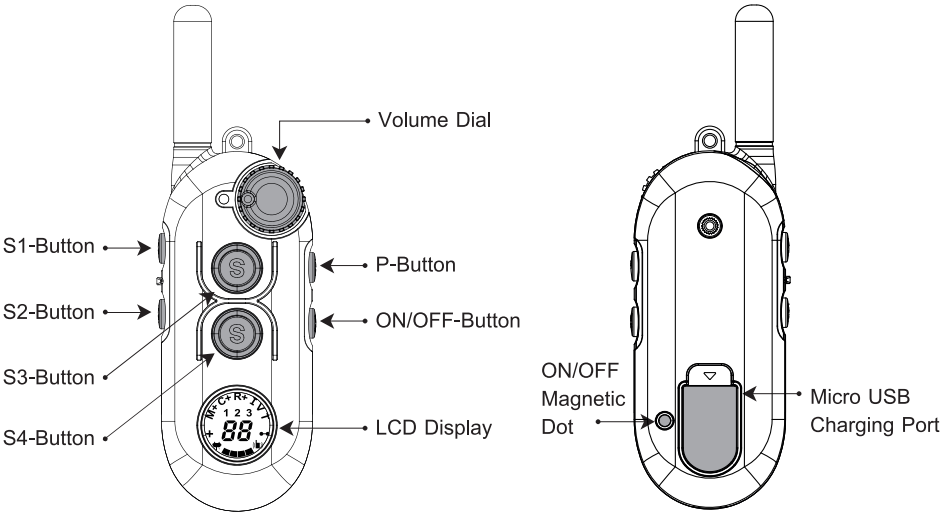
- Test Light
- Contact Point Tool
- 5/8" and 3/4" Contact Points



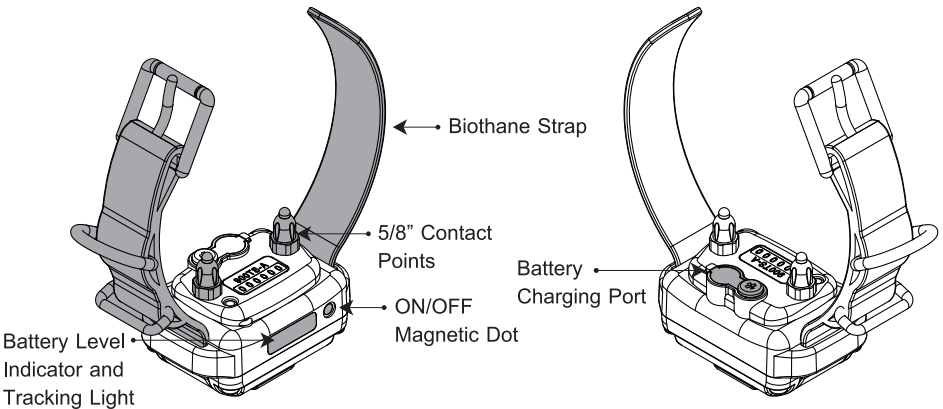
- Lanyard
- Battery Charger
- Metal Belt Clip



Device Composition



S1,S2,S3,S4	Programmable Stimulation Button
P Button	Programming mode Button
ON/OFF Button	Turn Device ON/OFF
Volume Dial	Change Stimulation Level



06

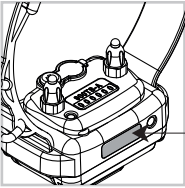
How to Charge Devices

Important Notice : Take off the charger from when device is fully charged for longer battery life



Transmitter :

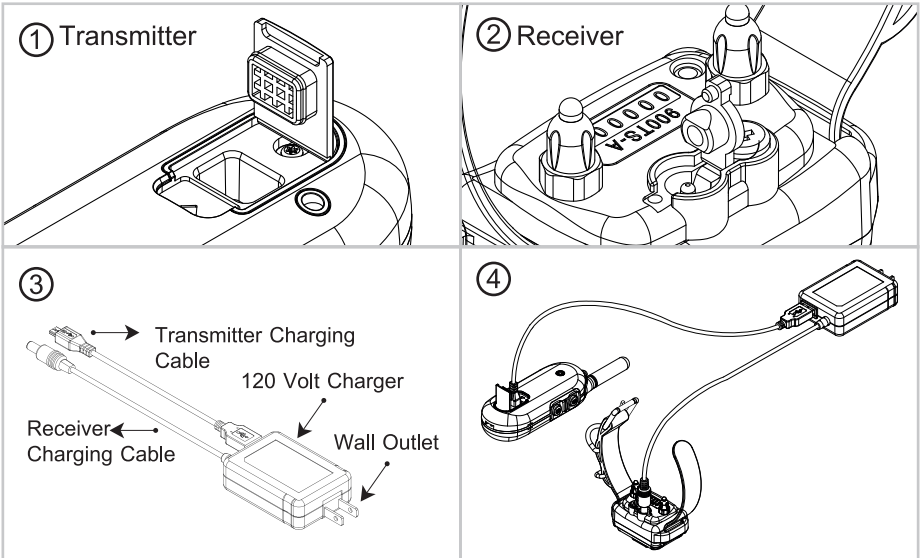
The battery life is displayed on the LCD.



Receiver

- Indicator light is blinking "Green" when battery level is okay.
- Indicator light is "Amber" when battery level below medium.
- Indicator light is "Red" when battery level is very low.

HOW TO CONNECT THE CHARGER



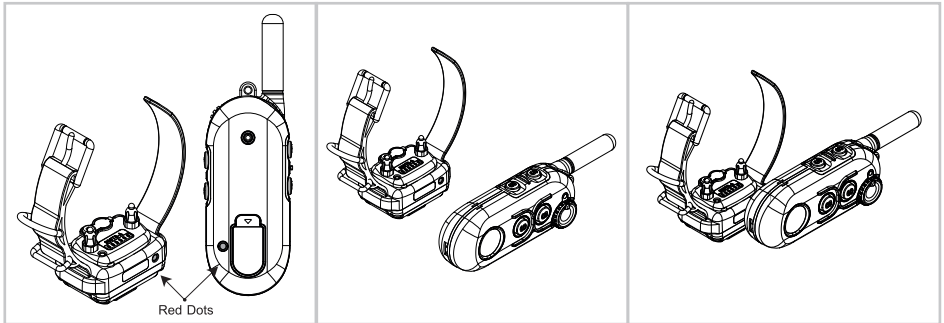
Each Unit can be charged separately or together.

Indicator light is red during charging and turn green when it is fully charged.

Turning ON/OFF the PE-900

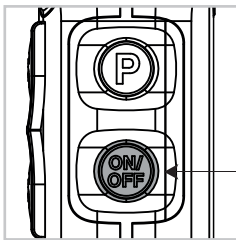
Turning Receiver ON and OFF

COLLAR RECEIVER turn ON/OFF by using magnet technology



Put red dot on rear of Transmitter close to the red dot on the receiver.

Turning Transmitter ON and OFF



Press the "ON/OFF Button" for more than 1 second.

Position of Transmitter

To obtain the maximum range hold the transmitter like the torch on the Statue of Liberty. Keep the antenna away from your body or fingers at all times, touching the antenna will greatly reduce the range.



[Long Range]



[Medium Range]



[Short Range]

08

CORRECTLY FITTING THE COLLAR

Proper fit and position of the Receiver is important for better training efficiency

Caution

To prevent the occurrence of skin irritations the collar receiver should never be worn for more than 12 hours per day.

The dogs skin needs to be conditioned to the contact points this is accomplished by starting out with 1 to 2 hours and slowly working up to the absolute maximum of 12 hours per day.

Should your dog experience skin irritations from over exposure to the contact points or allergic reaction to the nickel remove the collar receiver unit immediately and stop using your e-collar until the skin irritations are totally healed. Antibiotic ointment is suggested to aid in the healing process and prevent infections, a visit to your Veterinarian may be required should any open sores become infected.

The collar should be adjusted to allow the “contact points” to have direct contact with the skin. You should be able to fit a couple of fingers between the collar strap and your dog. Too tight poses the risk of skin irritation and discomfort. Too loose and the contact points will not be able to administer the stimulation reliably and can cause skin irritation due to chafing. A nice snug fit is best.



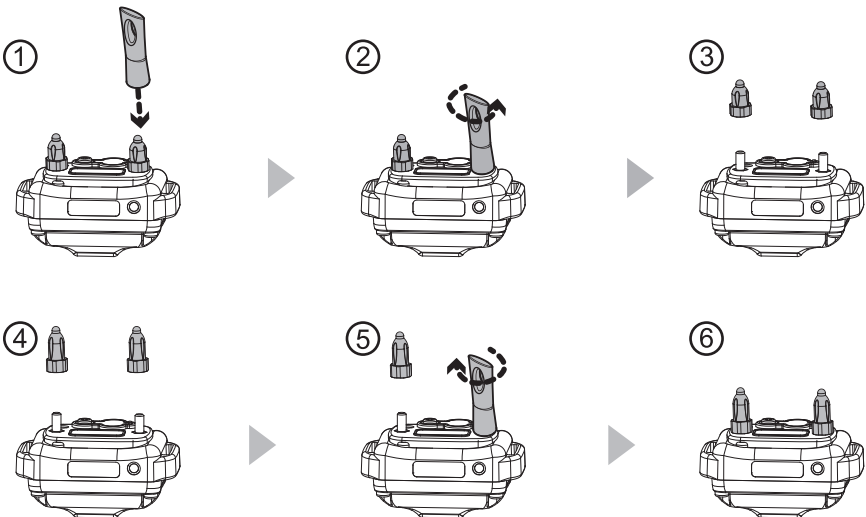
always seat the collar receiver by giving it a little wiggle to remove any hair that is between the contact points and the dog's skin.

The optimal position for the collar receiver is on either side of the dog's windpipe in the 2 to 5 or the 7 to 10 o'clock position; most dogs don't like it on their windpipes.

Periodically switching positions during a full day of e-collar use is good practice and can help prevent irritations from occurring. Inspecting the area is very important to assure your dog is handling the pressure from the contact points.

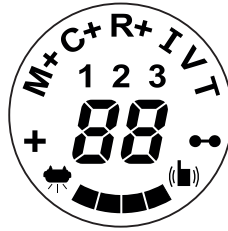
HOW TO CHANGE THE CONTACT POINTS





If "contact points" does not fit for your dog due to long hair, you can easily change the contact point with the contact point tool. Follow diagrams step by step.



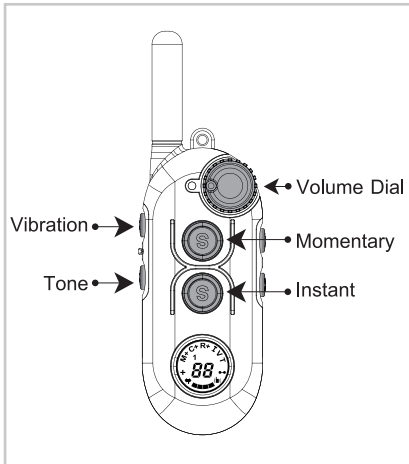
10

LCD DISPLAY Description



Icon	Description	Action
M	Momentary Stimulation	Send Single Stimulation in short duration
M+	Momentary Boost Stimulation	Send boosted single stimulation in short duration
C	Continuous Stimulation	Sends stimulation continuously up to 10 seconds.
C+	Continuous Boost Stimulation	Sends stimulation continuously up to 10 seconds.
R	1 Second Ramp Stimulation	Stimulation ramps from 10 to stimulation level
R+	2 Second Ramp Boosted Stimulation	Stimulation ramps from 10 to boosted stimulation level
I	Instant Stimulation Mode	Gives Continuous Stimulation up to 45 seconds follows by Volume Dial Volume Dial must be 0 to activate
V	Vibration	Vibrate up to 30 seconds
T	Tone	Flat sound up to 30 seconds
+	Boost Level Setting	Set up Boost Level. Default is 5
	Night Tracking Light	Turn ON/OFF Night Tracking Receiver Light
	Lost Transmitter	6 Hours Timer for Transmitter
	Pairing Collar Receivers	Replace/Add Receivers
1 2 3	Multi Dog System Indicator	Display current Dog system
88	Stimulation Level Indication	0 to 100 Stimulation Level
	Battery Indicator	Indicates Transmitter Battery Level

Default Button Preset & Usage



Important Notice: Four default stimulation modes are ready to use when you receive the device. You can give these stimulation to dog by pressing button follow by the left diagram. **Always start the Volume Dial from the low level.**

See LCD Display Description for how stimulation works and understand before use it for your dog.

How to Find Proper Stimulation Level

900 Pro Educator supports 100 different stimulation levels.

Getting to know proper stimulation for your dog is the key of the succesful training. This is simple guide to find out proper stimulation level, there is more detail training guide on Page 18.

Important Notice: Rotate Volume Dial counter-clockwise to increase stimulation level, rotate Volume Dial clockwise to decrease stimulation level.


1. Put the collar receiver on your dog, let him/her get used to the receiver
2. Turn the Volume Dial to "0" and press Instant stimulation button (S4). Increase the level one by one and repeat until dog makes any indication of noticing the stimulation; this could be an eye twitch or scratching the collar receiver. Most dogs respond between 5 and 20. Remember the stimulation level that your dog respond, this is proper intensity level for your dog.
3. Press Instant stimulation (S4) again to turn off Instant stimulation mode.

Caution: If your dog react too hard from stimulation or seems erratic,
TURN OFF STIMULATION IMMEDIATLY

12

Program Stimulation Buttons

You can Program any stimulation mode to S1, S2, S3 and S4 Buttons.

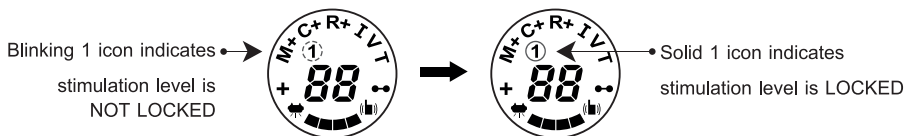
1. Press and hold **P** button until **PR** is displayed.
2. Press any one of S1~S4 button repeatedly until stimulation mode you want to set.
3. Stimulation mode will change as follow :

4. Repeat step 1 to 3 to program other button.
5. Press **P** any time to exit the Programming mode.

How to Lock & Unlock Stimulation Level

Lock the stimulation level to protect from unexpected high level stimulation.

1. Press and hold **P** button until **PR** is displayed.
2. Press any one of S1~S4 buttons repeatedly to select either **M** or **C**.
3. Use volume dial to change stimulation level.
4. Press and hold same stimulation button until **1 icon** on LCD will change blinking to solid.
5. Press **P** button to exit from the Programming Mode.
6. Repeat step 1 to 5 to unlock the stimulation level.

Important Notice: When Stimulation is locked, **Stimulation level will not change** even though you change the Volume Dial



Instant Stimulation

Instant Stimulation gives Stimulation continuously up to 45 seconds follows by Volume Dial. Volume Dial must be 0 to activate Instant Stimulation level.

Caution: DO NOT FORGET YOUR DOG GETS STIMULATION EVERY SECOND UNTIL INSTANT STIMULATION TURN OFF.

1. Set Instant Stimulation on any Stimulation Button.
2. Turn Volume Dial to 0 to activate (Require). You will see [**0n**] icon.
3. Press Stimulation Button at #1, Turn Volume Dial for starting stimulation.
4. Stimulation will automatically shut down in 45 seconds. Change stimulation level to 0 level will reset the 45 seconds safety timer.
5. Press assigned Stimulation Button at #1 to turn off Instant Stimulation.

Boost Level Setup

Boosted stimulation gives stronger than regular stimulation.

Default Boost Level is 5

For example, Momentary Boosted Stimulation (M+) gives level 30 stimulation when stimulation level is 25 and boost level is 5.

1. Press and hold P button until PR is displayed
2. Press ON/OFF button one time, check [**+**] icon at LCD.
3. Use volume dial to change desire boost level and press S1 to save.
4. Press P button to exit from the programming mode.



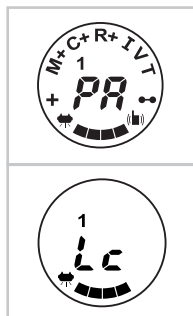
14

Night Tracking Light

Night Tracking Light provides bright light from the receiver. This feature provides bright vision around your dog and shows where your dog is heading to.

This feature cannot be programmed on Stimulation Button

1. Press and hold P button until PR is displayed.
2. Press ON/OFF button two times, check [🐕] icon at LCD.
3. Press any one of S1 ~ S4 buttons to activate.
4. Receiver light will change OFF -> Blinking -> Solid, when you press S1 ~ S4 each time.
5. Press P button to exit from the programming mode.



Important Notice: Exit from programming mode does not mean turning off the Night Tracking Light.

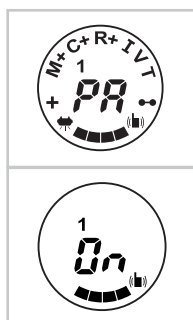
Using this feature cause spend Receiver's battery dramatically

Lost Transmitter

Lost Transmitter is alarm feature, which prevents lost of transmitter. If you activate Lost Transmitter feature, device will make a high tone sound after 6 hours.

This feature cannot be programmed on Stimulation Button

1. Press and hold P button until PR is displayed
2. Press ON/OFF button three times, check [(🐕)] icon at LCD.
3. Press any one of S1 ~ S4 buttons to start alarm timer.
4. Transmitter LCD shows [On] when activated, and icon will remain on LCD until alarm goes OFF.
5. Press P button to exit from the programming mode.

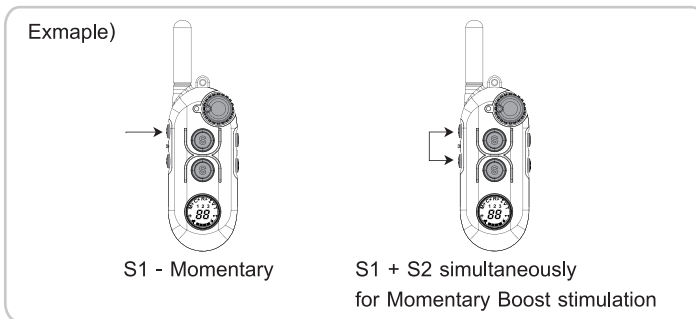


Two Button Boost

When you use **2 dog or 3 dog system**, there is easier way to use Boosted stimulation. Instead of setting Boosted stimulation on stimulation button, you can do it with two button combination

Important Notice: This feature only support for Momentary and Continuous

1. Press Stimulation Button either Momentary or Continuous
2. Before you release stimulation button, press above or beneath Stimulation Button simultaneously for additional boosted stimulation



Warning Mode


Warning Mode is special feature on **3 Dog System** only.

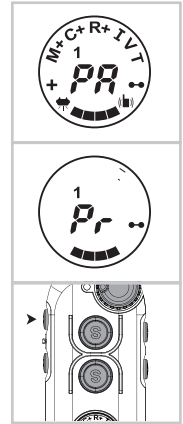
Every dog's Stimulation Modes will change to Vibration. We recommend this feature when you dont have time to change Stimulation modes.

1. Press P button to activate Warning Mode.
2. After one beep, any stimulation modes of S2 S3 S4 except tone will change to vibration automatically.
3. To exit from the warning mode, press P button one more time.
4. After two beeps, all stimulation modes changes to previous preset.

16

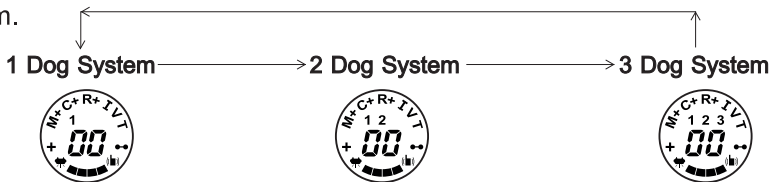
How to replace for new Receiver by Pairing

1. Make sure the Receiver is turned off.
2. Press and hold **P** button until **PR** is displayed.
3. Press **ON/OFF** button four times, check  icon at LCD.
4. Put Transmitter's red dot on Receiver's red dot for more than 5 seconds.
5. If Indicator Light on receiver rapidly blinking with green color, press S1 to complete replacement. You will hear confirming sound.
6. Press P button to exit from the programming mode.



Multi Dog System

900 Pro Educator supports multi dog system, which is controllable up to 3 dogs. Press **ON/OFF** button + **S1** button simultaneously to change Dog System.

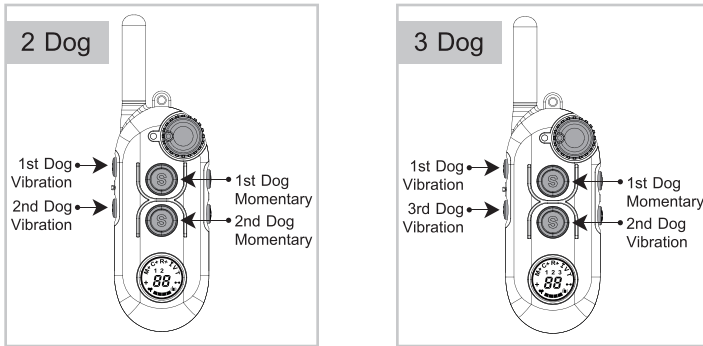


Stimulation buttons work different while multi dog System.

Stimulation Buttons	Stimulation buttons for multiple dogs		
	1 Dog System	2 Dog System	3 Dog System
S1-Button	Dog 1	Dog 1	Dog 1
S2-Button	Dog 1	Dog 2	Dog 3
S3-Button	Dog 1	Dog 1	Dog 1
S4-Button	Dog 1	Dog 2	Dog 2

How to Add a Collar for Multi Dog System

Default Stimulation buttons for Multi Dog System



How to add extra receiver for second dog

1. Make sure the Receiver is turned off.
2. Press **ON/OFF** button four times, check ●● icon at LCD.
3. Press and hold **P** button until **PA** is displayed.
4. Put Transmitter's red dot on Receiver's red dot for more than 5 seconds.
5. If Indicator Light on receiver rapidly blinking with green color, press S4 to complete replacement. You will hear confirming sound.
6. Press P button to exit from the programming mode.

How to add extra receiver for Third dog

1. Make sure the Receiver is turned off.
2. Press **ON/OFF** button four times, check ●● icon at LCD.
3. Press and hold **P** button until **PA** is displayed.
4. Put Transmitter's red dot on Receiver's red dot for more than 5 seconds.
5. If Indicator Light on receiver rapidly blinking with green color, press S2 to complete replacement. You will hear confirming sound.
6. Press P button to exit from the programming mode.

2
D
O
G

3
D
O
G

18

Important Training Tip

E-Collars should be used to reinforce commands your dog already knows. It is not a replacement for basic leash obedience training, but a tool to allow you to better communicate to your dog. For best results, use the least amount of stimulation required to get compliance from your dog. A calm and consistent approach to training will always produce better long term results.

It is highly recommended that aggressive dogs be taken to a professional trainer for evaluation before e-collar use. There are many different e-collar training techniques recommended by a variety of professional trainers. We believe you, the owner of the dog, can best determine the most successful technique for your dog. YouTube has many videos demonstrating these varying techniques by simply searching “educator e-collar training” or “remote dog training techniques with an educator”.

Troubleshooting

? My Receiver / Transmitter is not turning on

- A Make sure the Receiver has been charged. We recommend device fully charge before use.

? My Receiver is not responding

- A Check Receiver's indicator light is blinking green and Transmitter LCD to check device power.
- A Check Receiver's indicator light is red when you press any stimulation button.
 - A. If you don't see any red light, check your device using right Multi dog system. For example, if you have one dog, you must small **1 icon** only at "Multi Dog system Indicator" on LCD display.
 - B. If still Receiver not respond, Try pairing with Receiver one more time.

? I think receiver gives no stimulation at all

- A Remove Contact points from Receiver. Connect Test Light on the Receiver and try any stimulation. If the test light is blinking, receiver is giving stimulation.

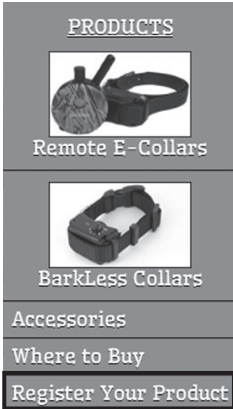
? Max range of device has been decreased

- A Check Transmitter's battery condition. Working range decrease if battery level is too low.
- A Holding position is important; keep finger away from the antenna. Touching the antenna by finger will greatly reduce the range.

? I want to reset the Transmitter as default

- A Rotate Volume Dial to 0, press ON/OFF + S3 simultaneously for 6 sec.

WARRANTY AND REGISTRATION



To register your Pro Educator please select one of the following procedures

- (1) Go to the “Products” section on www.ecollar.com and click the “Register Your e-Collar Products” tab and complete the form
- (2) Fill out the provided warranty registration card and mail it or fax it to us at 1-855-226-5527.
- (3) Call us at (260) 357-0051 and one of our customer service representatives will register your products for you, please have your serial number available.

Two Year Full Warranty:

Your product is covered by our full two year warranty. During the warranty period we will repair and or replace your product for any reason due to workmanship and component failures. Dog chews and misuse are not covered by the warranty and are subject to a repair/replacement fee.

Important Notice to Consumer/User

In no event shall our company be liable for any direct, indirect, punitive, incidental, special consequential damages, to property or life, whatsoever arising out of or connected with the use or misuse of our products.

Safety and General Information

- The PE-900 Series Collar complies with all National and International Standards and Guidelines for human exposure to radio frequency electromagnetic energy.
- Nearly all electronic devices are susceptible to electromagnetic interference(EMI) if inadequately shielded or designed without precautions to EMI.
- PE-900 Series e-collar transmitters manufactured by E-Collar Technologies, Inc. comply with Article 15 of the FCC rules and operate under Part 95 of FCC regulations.
- Operating Frequency Band is 27.095 MHz.

1. IMPORTANT NOTICE

To avoid Electromagnetic Interference and/or compatibility conflicts, please turn off your transmitter and collar receiver in any facility where posted notices instruct you to do so. Never use your equipment in close proximity of a Hospital or Health Care Facility or enter the facility without turning off both units.

2. An FCC license is not needed to operate PE-900 Series e-collar transmitters. However, any change or modification made to the transmitter, including the supplied antenna, without the expressed written approval of E-Collar Technologies, Inc. could void your authority to operate.



E-Collar Technologies, Inc.

This product is covered by various patents including but not limited to patents 8757098 and 8833309. Patent is pending on the Instant Stimulation Feature on this device.

2120 Forrest Park Drive
Garrett, IN 46738-1887

1-260-357-0051 (US & International)
1-855-326-5527 (US Toll Free)
1-855-226-5527 (US Toll Free Fax)

sales@ecollar.com
www.ecollar.com
customerservice@ecollar.com



Patents Pending
© 2014 E-Collar Technologies, Inc.



Thank you for Supporting American Workers

Copyright 2014 E-Collar Technologies, Inc.

All Rights Reserved.