

Installation Instructions

Pre-Attached Long Plates with Levers

IMPORTANT!

All wood screws require 7/64" pilot holes, 1" deep in the door and jamb. Electric drills/drivers should NOT be used to install any wood screws.

NOTE: Passage and privacies fit doors 1-3/8" to 1-3/4" thick.

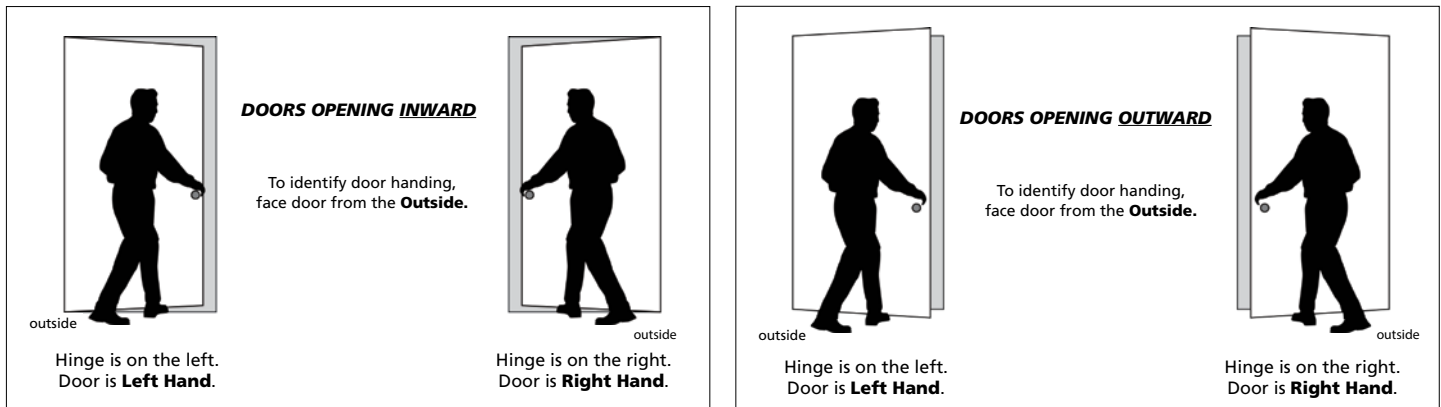
Tools Required: #2 Phillips Screwdriver & electric drill, 7/64" bit

DOOR HANDING - ROSETTES AND SHORT PLATES

Door handing is critical for Split-Finish, or Split-Design products. It's also used to determine where the Interior and Exterior halves of the lockset are located on the door. And, it's used to position the latch tongue in relation to the strike plate.

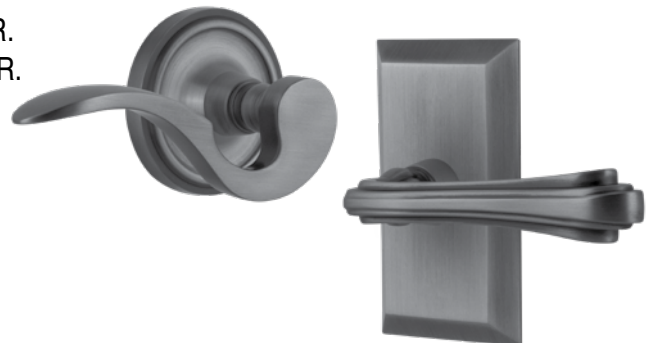
Inside of Door - The Inside of a door refers to the side of the door that **faces the room**. For example, for a bedroom door on a hallway, the Inside of the door would face the bedroom.

Outside of Door - The Outside of a door refers to the side of the door that **faces away from the room**. For example, on a bedroom door, the Outside would face the hallway.

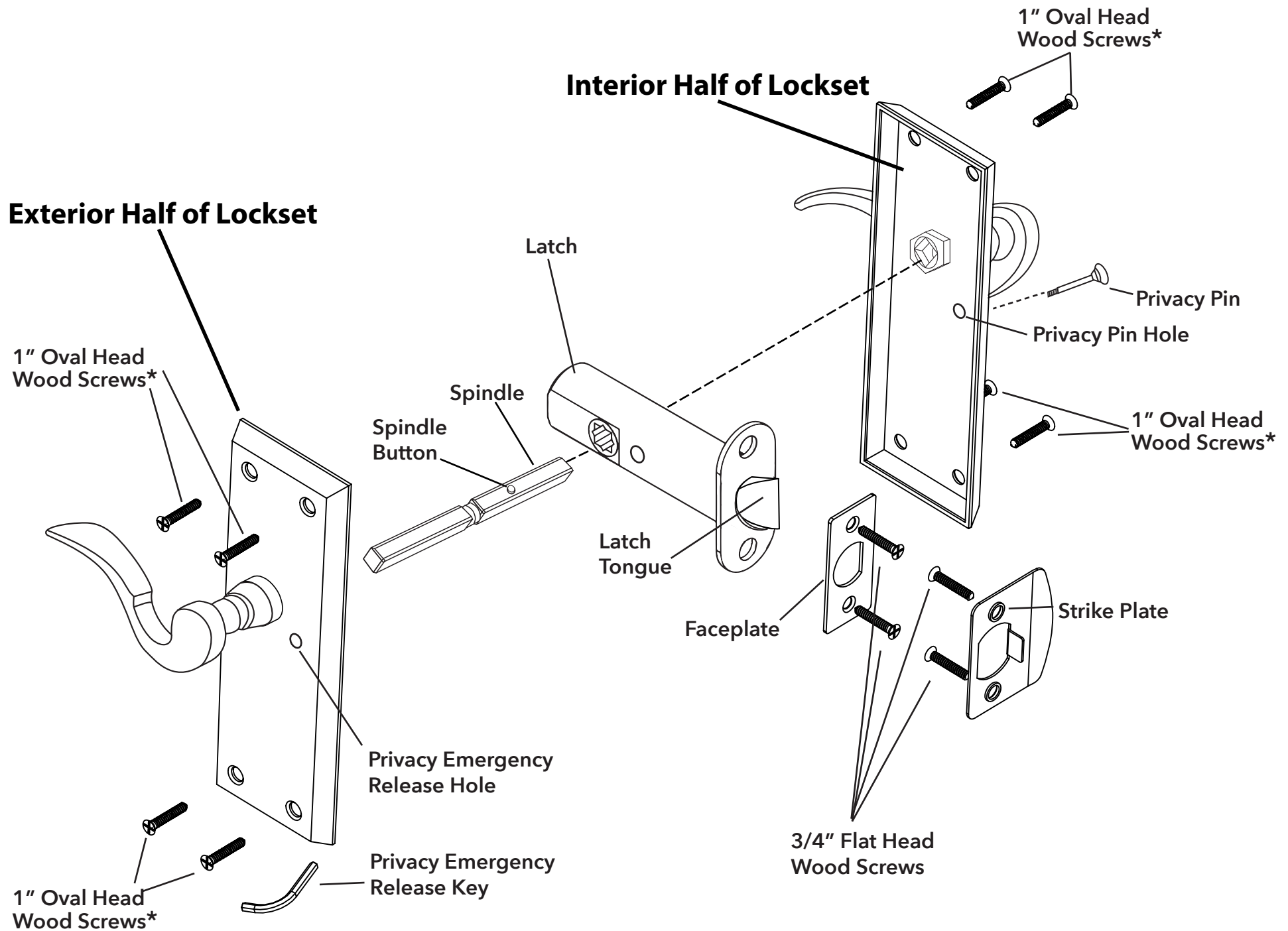


INSTALLATION RULES:

- 1) READ ALL INSTRUCTIONS AND FOLLOW EACH STEP IN ORDER.
- 2) DO NOT MIX PARTS FROM ONE BOX WITH THOSE OF ANOTHER.
- 3) Lockset machine mounting screws are inserted from the inside.
- 4) Privacy pin holes are next to the door edge containing the latch.
- 5) Latch tongues have a beveled side, and this side should contact the curved end of the face plate, and curved end of the strike plate.
(See *Latch Tongue Notes on page 3.)



Exploded Drawing for Pre-Attached Long Plate Passage/Privacy - Lever

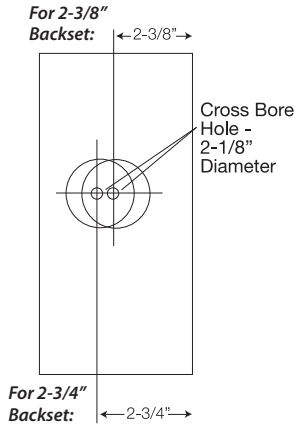


**Fits doors
1-3/8" to 1-3/4" thick**

**Passage/Privacy Lever
LONG PLATE**

Tools Required: #2 Phillips Screwdriver (Not power tools)

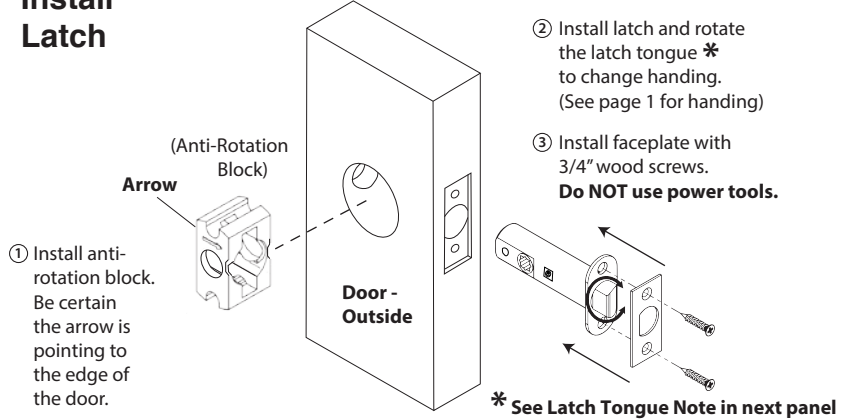
A Backset Information



NOTE:
DRILLING
TEMPLATES
ON
SEPARATE
INCLUDED
SHEET

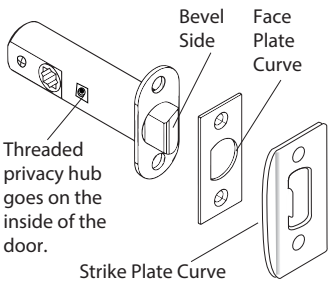
B Install Latch

IMPORTANT! All wood screws require 7/64" pilot holes, 1" deep in the door and jamb. Electric drills/drivers should NOT be used to install any wood screws.

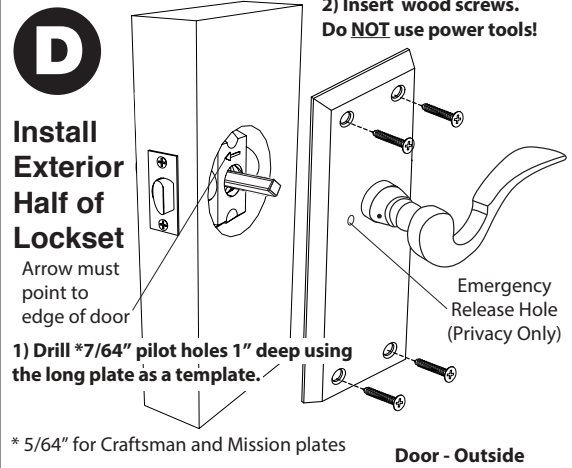
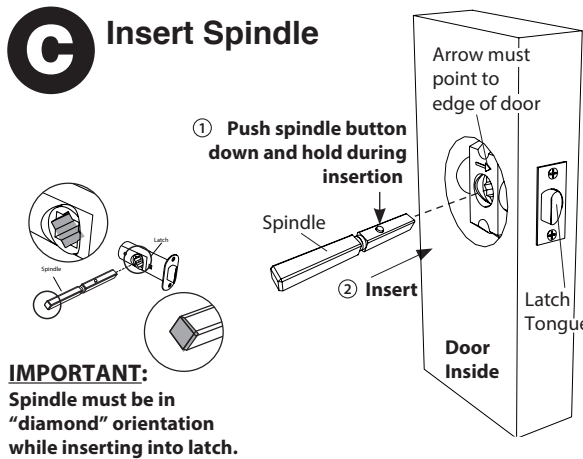


*** Latch Tongue Note**

Bevel side of latch tongue should contact curved end of face plate, and curved end of strike plate.



C Insert Spindle



E Install Interior Half of Lockset

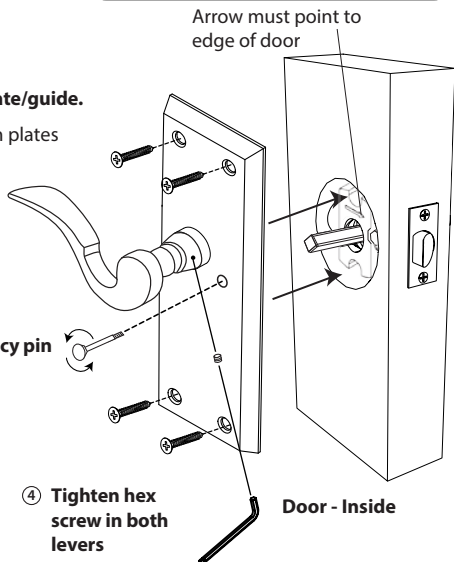
NO POWER TOOLS!!!

① Drill *7/64" pilot holes 1" deep using the long plate as a template/guide.
* 5/64" for Craftsman and Mission plates

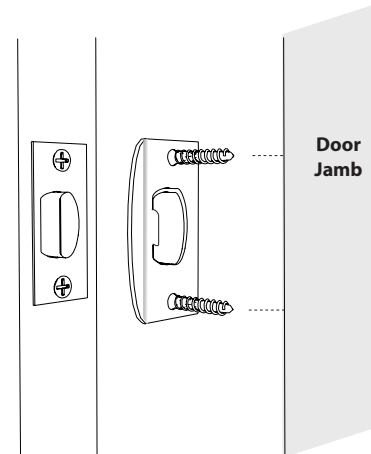
② Insert wood screws
-Do NOT use power tools!

③ Screw in privacy pin (Privacy only)

④ Tighten hex screw in both levers



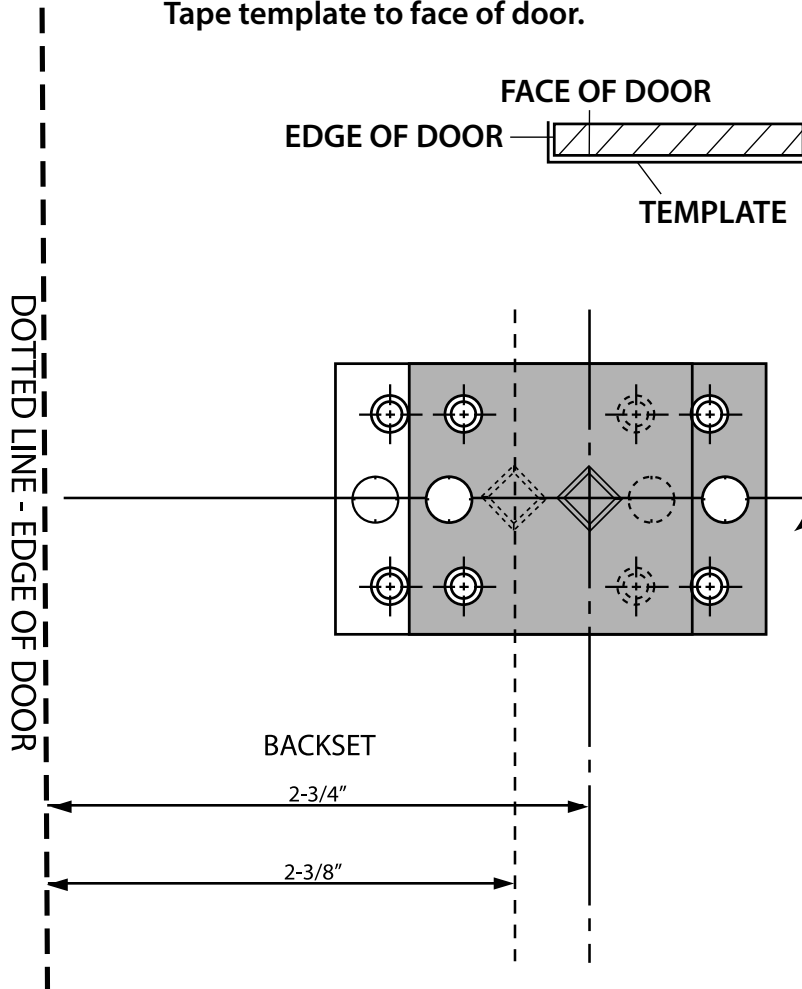
F Install Strike Plate



Attach the strike plate to the door jamb using 3/4" long wood screws.

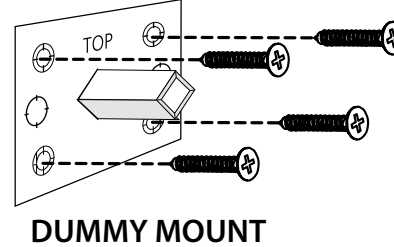
DUMMY INSTALLATION AND DOOR PREPARATION TEMPLATE - LONG PLATE/LEVER

- (2) Fold template along dotted line, and position fold on the edge of the door. Tape template to face of door.



- (3) Before drilling verify the backset of your existing doors. Mark the four screw hole positions on your dummy mount on the door. Drill pilot holes using a $5/64$ " diameter bit.

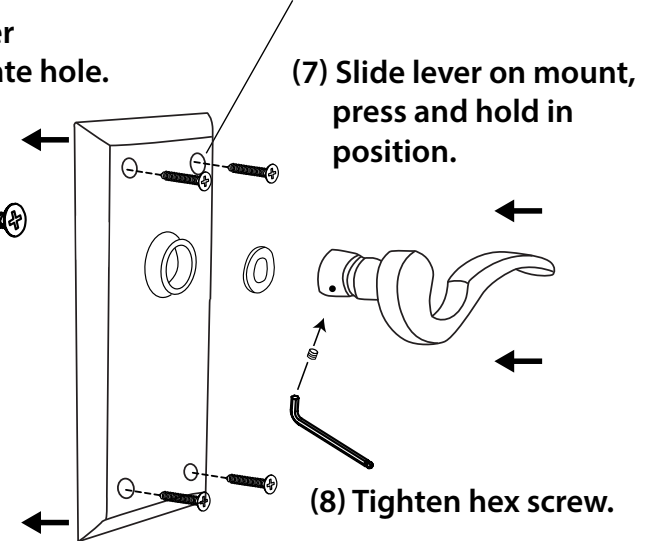
- (5) Position long plate over dummy mount, align side of long plate with door edge. Center spindle in the long plate hole. Hold in place.



- (4) Remove template from door. Install four wood screws in dummy mount. Tighten WITHOUT power tools.

- (1) Measure from the floor to the center of existing locks, and use this distance as the height of the dummy mount. If there are no existing locks, position the dummy mount 36" to 38" from the floor.

- (6) Mark the screw hole positions in your long plate on the door. Drill pilot holes using a $7/64$ " diameter bit. Install wood screws in the long plate. Do NOT use power tools.



- (7) Slide lever on mount, press and hold in position.

- (8) Tighten hex screw.