

Devotion Field Tile Installation Instructions

Antique Mirror 6"x12"

These instructions are provided as a general guideline for the installation of Devotion Field Tile; some installations require a more detailed specification. An experienced, professional tile installer, who has read and understands these instructions, should perform the work. For additional installation recommendations, please call Oceanside Glasstile Technical Services: 877-648-8222 or email: techsupport@glasstile.com. **Devotion Field Tile is recommended for interior wall applications in both dry and intermittent wet locations (e.g. shower walls).** For detailed product use information and recommended applications, please refer to the Installation section of our website www.glasstile.com.

MATERIAL INSPECTION

The owner or owner's representative is responsible for determining the acceptability of this product prior to installation. Due to the artistic nature of this tile, variation in color, shade, tone and size is normal. Upon delivery, open and inspect each box. Blend the entire tile order either prior to or during installation to promote a visually consistent appearance. **No adjustments will be made after installation.**

SUBSTRATE PREPARATION

In general, there are three types of acceptable substrates for Devotion Field Tile:

- Cement Mortar - Two-coat cement mortar-bed reinforced with 2.5lb galvanized metal lath
Cured a minimum of 7 days
- Cement Backer Board (CBU) - Durock, Fiberock, Hardibacker, PermaBase, Wonderboard
- Drywall - Dry locations only

The tile installation's substructure, location and substrate type (e.g. CBU or drywall) will influence the details of how the substrate should be prepared. The following substrate preparation methods are detailed in the Tile Council of North America's "2014 TCNA Handbook for Ceramic, Glass, and Stone Tile Installation" and are organized by alphanumeric designation (e.g. W243-14). Use the following chart to identify which TCNA method is appropriate for your installation and refer to the TCNA Handbook for details. The TCNA handbook is available for purchase at www.tcnatile.com.

WALLS	INTERIOR			EXTERIOR		SHOWERS	INTERIOR	
	Backer Board	Mortar	Drywall	Backer Board	Mortar		Backer Board	Mortar
Wood Studs	W244C-14 W244F-14	W231-14	W243-14	W244E-14	W231-14	Bathtub Walls*	B412-14	B411-14
Metal Studs	W244C-14 W244F-14	W241-14	W243-14	W244E-14	W241-14	Shower Walls*	B415-14	B414-14
Solid Backing (Masonry)	N/A	W221-14	N/A	N/A	W201-14			

* Wood or Metal Studs

Unacceptable Substrates

- Single-float mortar bed walls (cement mortar beds, which do not employ cured scratch coats)
- Cement mortar beds reinforced with metal lath less than 2.5 lb per square yard (chicken wire)
- Wood Products such as plywood, luan, MDF, pressboard and composites

Substrate Requirements

- Install horizontal, solid blocking in the framing at a maximum spacing of 36" on center and such that all edges of the CBU are continuously supported.
- Solid blocking for the anchoring of fixtures, such as shower doors and towel bars, must be installed prior to installing the tile substrate.
- Treat CBU joints with mesh-tape and thin-set per the CBU manufacturer's recommendations and allow to cure 48 hours prior to tile installation.
- When installing Devotion Field Tile adjacent to thicker materials, with the intention of the two tiles finishing in the same plane (flush), refer to the "Feature Strip Installation" document in the Installation section at www.glasstile.com.

Caution: Installing glass tile over fresh excessively built-up thin-set mortars may result in tile cracking due to mortar shrinkage.

INSTALLATION MATERIALS

ACCEPTABLE THIN-SETS

- ARDEX: X 77 Fiber Reinforced Thin Set Mortar
- BOSTIK: Glass-Mate mixed with 425 Multipurpose Acrylic Admixture
- CUSTOM BUILDING PRODUCTS: Glass Tile Premium Thin-Set Mortar
- LATICRETE: Glass Tile Adhesive
- MAPEI: Adesilex P10 Bright White Thin-Set Mortar mixed With Keraply Mortar Additive
- TEC SPECIALTY PRODUCTS: Super Flex Premium Performance Universal Latex-Modified Thin-Set Mortar

UNACCEPTABLE ADHESIVES

- Organic Adhesives (Mastic) - due to low bond strengths
- Epoxy - due to low flexibility

GROUT

Devotion Field Tile can be grouted with cement-based, urethane-based or pre-mixed grout. Confirm the grout to be used is appropriate for the intended application and grout joint size. If using a grout with aggregate (sanded), use caution during grout application to avoid scratching the tile surface.

Caution: Do not grout "Devotion Field Tile" with epoxy grout.

ANTI-FRACTURE/WATERPROOFING MEMBRANES

When installing Devotion Field Tile, the use of a topically applied crack isolation membrane, meeting ANSI A118.12, is required. Each membrane product will vary in type, application and performance; consult the membrane manufacturer for specific recommendations and limitations.

Some common ANSI A118.12 membranes are:

- ARDEX: 8+9
- BOSTIK: GoldPlus
- CUSTOM BUILDING PRODUCTS: RedGard
- LATICRETE: Hydro Ban
- MAPEI: Mapelastc AquaDefense
- TEC SPECIALTY PRODUCTS: HydraFlex

MOVEMENT JOINTS

Movement joints are essential for the success of most tile installations. Follow recommendations on Movement Joints EJ171-14 in the "2014 TCNA Handbook for Ceramic, Glass and Stone Tile Installation". As a general rule, movement joints should be installed at all changes in plane (inside corners), where the tile meets dissimilar materials and at all restraining abutments. Field joints may be required depending on the installation's size and exposure to water and direct sunlight. Consult sealant manufacturer for use recommendations and limitations.

INSTALLATION

Step 1 To initiate the bond coat, use the flat side of a trowel and firmly apply thin-set to the substrate.

Step 2 To establish the proper depth of the setting bed, use a 1/4"x1/4" square-notch trowel to apply additional thin-set and comb full notches in one direction.

Step 3 Thoroughly clean the back of each tile using a clean, dry cloth. Never wet the tile prior to setting.

Step 4 Press the tile into the fresh setting bed using firm, even pressure. Remove excess setting material from the edges and space a minimum of 1/16" between tiles and all abutting surfaces.

Step 5 After a full 24 hours (some installations may require extended cure times) apply grout with a rubber grout float, forcing grout into joints until full.

Step 6 Allow grout to set-up (firm) and smooth finish with a damp sponge. After approximately 2 hours remove grout haze with a lightly damp sponge.

Step 7 For final removal of grout haze, polish with a clean, soft cloth.

NOTE: Grout application and cleaning process will vary based on the type and brand of grout. Refer to grout manufacturer's instructions for details.

CUTTING

Devotion Field Tile can be cut to meet jobsite dimensions with the use of a high-quality wet tile saw equipped with a continuous, smooth-rim, diamond glass tile blade or a score-and-snap tile cutting board. For inside corner cuts ("L" cuts), avoid square inside corners by drilling pilot holes at the cut corner (see photos below). Rounded inside corners will be more resistant to normal installation movement and will help prevent tile cracking.

DRILLING

Devotion Field Tile can be drilled using a wet core diamond bit, designed for drilling dense materials (e.g. glass or granite). Liberally apply water to cool and lubricate the drill bit during drilling. Once installed and fully supported, Devotion Field Tile can be drilled from the front of the tile. If drilling uninstalled tile, to minimize chipping of the decorative coating, begin drilling from the backside (see photos below). The diameter of all drilled holes must be large enough to allow the fastener to pass through the tile and substrate without making contact.

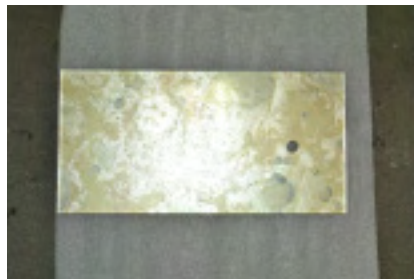
For inside corner cuts ("L" cuts), mark the cut on the back of the tile.



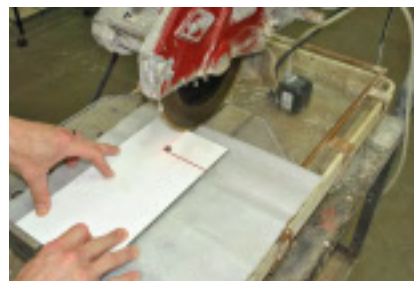
Using a wet core diamond bit and a template, drill a pilot hole, at the inside corner, half way through the tile thickness. Use the template to stabilize the core bit and prevent "walking" and liberally apply water during drilling. Starting to drill from the backside will help minimize chipping of the decorative coating.



Visually align the template with the pilot hole and finish drilling from the front side.



Using a wet saw with a continuous-rim, diamond, glass tile blade, make the straight cuts to the pilot hole. Cutting the tile with the backside up will help limit chipping of the back coating. Use caution to avoid scratching the tile face during cutting.



For additional assistance, contact Technical Services at 877-648-8222 or techsupport@glasstile.com.

TILE CARE & MAINTENANCE

SEALING

Devotion Field Tile does not need to be sealed, however, it is beneficial to seal cement-based grout; seal with Oceancare High Performance Penetrating Sealer.

Oceancare High Performance Penetrating Sealer Hybrid Carrier Technology™

Penetrates and protects grout, natural stone and other porous masonry materials. Forms an invisible, no-sheen barrier that is resistant to water and oil and provides superior stain protection. Low residue, easy to use formula. May be applied to dry, damp, cured or uncured grout or natural stone (seriously...immediately after grouting!).



High Performance Enhancing Sealer Hybrid Carrier Technology™

Low VOC, all-in-one color enhancer and penetrating sealer for both interior and exterior applications. Intensifies and enriches the color of natural stone, grout, concrete and other porous masonry materials. Forms a barrier that is resistant to water and oil and provides superior stain protection.

MAINTENANCE

Devotion Field Tile installations should be maintained with Oceancare Products. For regular cleaning use a nylon scrub-brush or 3M white nylon scrub pad and the appropriate cleaner listed below.

Oceancare pH Neutral Tile & Stone Cleaner

A non-toxic, biodegradable, all-purpose, no-rinse cleaner designed for daily use on almost any hard surface. Also available in concentrate formula; when diluted with water, one quart of concentrate will make up to 96 gallons of cleaning solution.



Oceancare All Purpose Cleaner & Degreaser

A 100% natural, plant-derived, citrus-based alkaline cleaner that quickly cuts through heavy grease and oil.



Glass Tile Shower Cleaner

A CFC free aerosol cleaner, ideal for cleaning tile tub-surrounds and showers. Use on glass tile, grout, metal fixtures, porcelain, ceramic and natural stone.



Clean & Seal

An all-natural, biodegradable, powerful everyday cleaner, fortified with the sealing protection of Oceancare High Performance Penetrating Sealer. When used for regular cleaning, this product rejuvenates existing sealer and maintains stain protection at optimal levels.



Oceancare Calcium Releaser

A non-toxic, acid-free cleaner that removes hard water deposits from tile, shower doors and plumbing fixtures.



Oceancare Grout Haze Remover

A biodegradable, non-toxic, acid-free cleaner that removes cement-based grout haze and deep cleans heavily soiled cement-based grouts.



For product availability and pricing please contact an Oceancare dealer or visit www.oceancareproducts.com.