

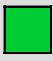


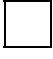




PIXEL ART

1	2	3	4	5	6
7	8	9	10	11	12
13	14	15	16	17	18
19	20	21	22	23	24



Colore	Chiodini compresi nella confezione	Chiodini necessari	Chiodini aggiuntivi che ti servono
	10812	7685	0
	5724	4738	0
	3816	3272	0
	3816	1799	0
	7632	3934	0
	8904	7372	0

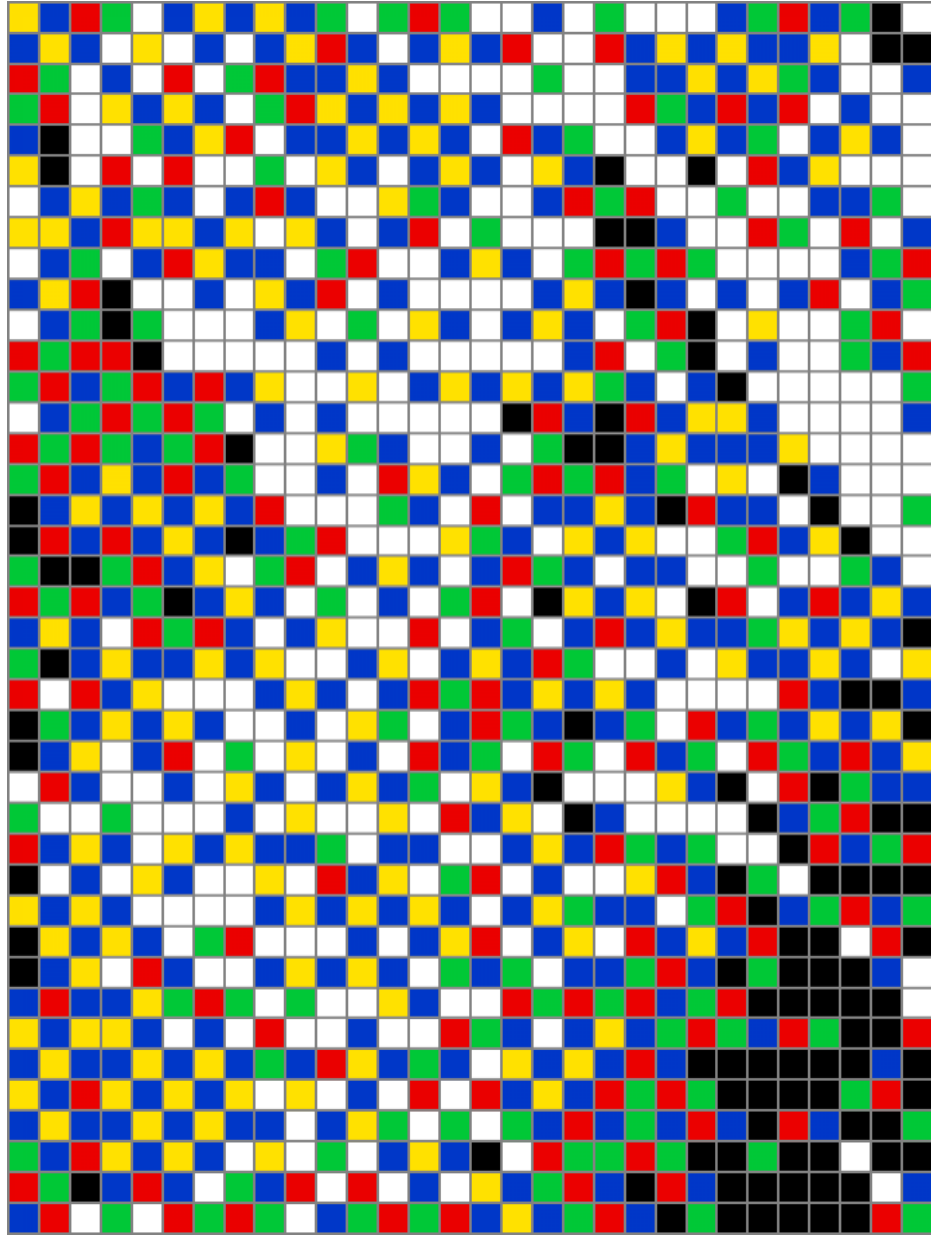
LEGGI ATTENTAMENTE PRIMA DI STAMPARE LE SCHEDE!

Stampa le schede-guida su carta comune in "DIMENSIONI REALI" cioè esattamente le stesse della tavoletta traforata; fai molta ATTENZIONE a NON ATTIVARE, sulla tua stampante, il comando "ADATTA AL FOGLIO" che ne varierebbe le dimensioni rendendole inutilizzabili. Ti consigliamo di stampare una pagina di prova con la scheda 1, controllarla con la tavoletta e poi stampare tutte le altre schede. Ritaglia le schede tenendo insieme il numero, ti servirà nel montaggio delle tavolette.

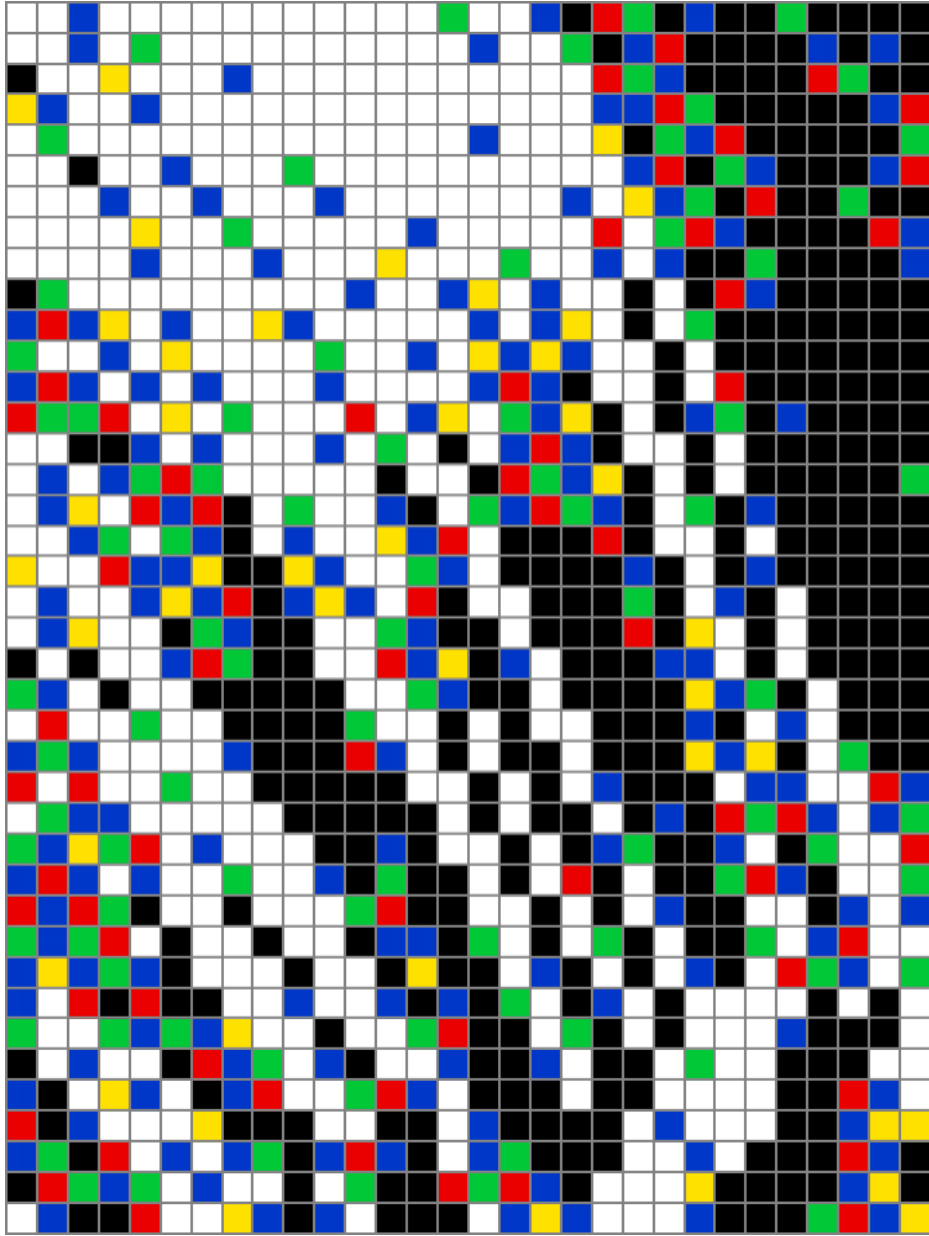
Questo PDF con le relative schede rappresenta soltanto un esempio di quello che si può ottenere con la tecnica Pixel Art applicata ai chiodini Quercetti. Pertanto questo PDF è scaricabile gratuitamente e non può essere oggetto di vendita.



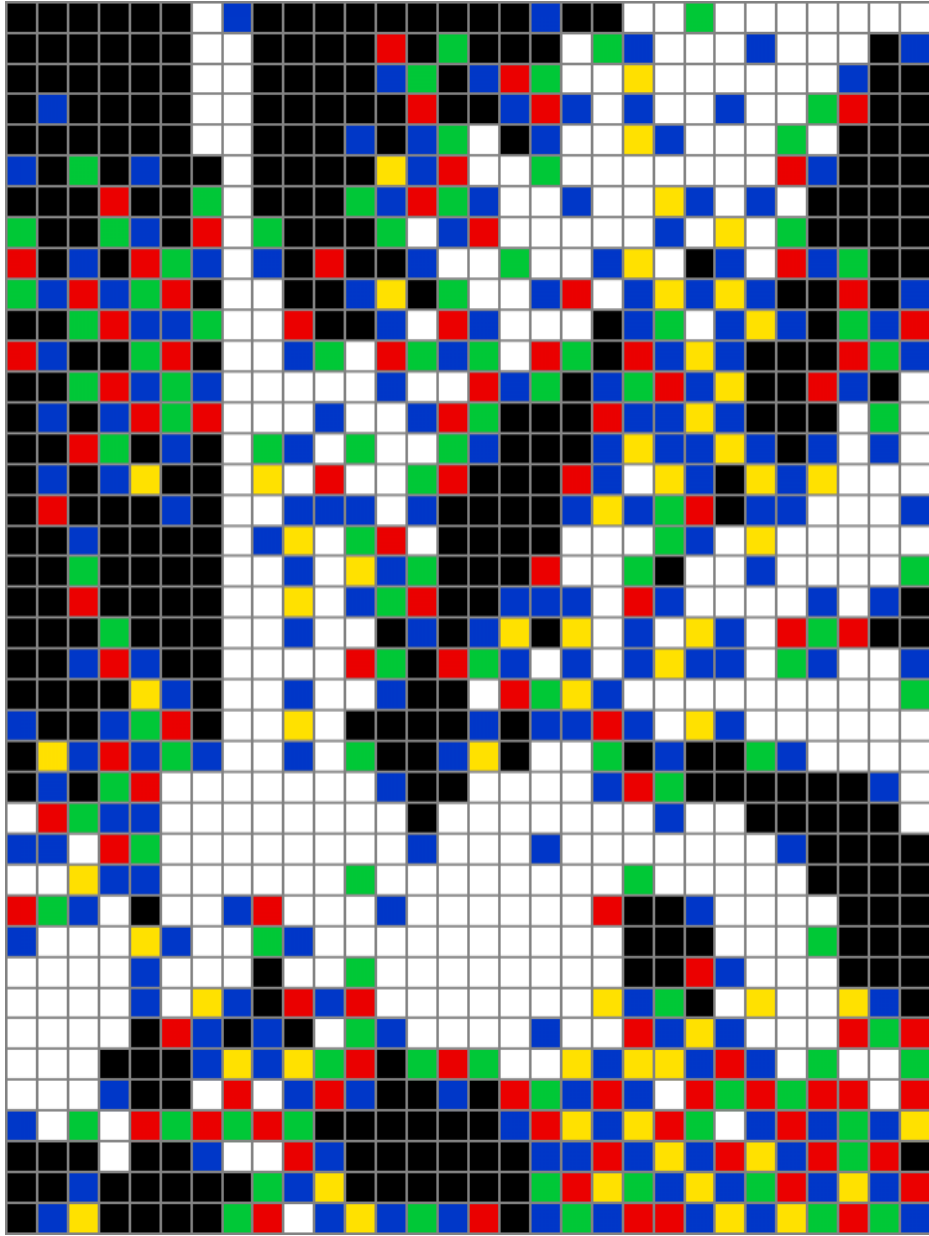
PIXEL ART



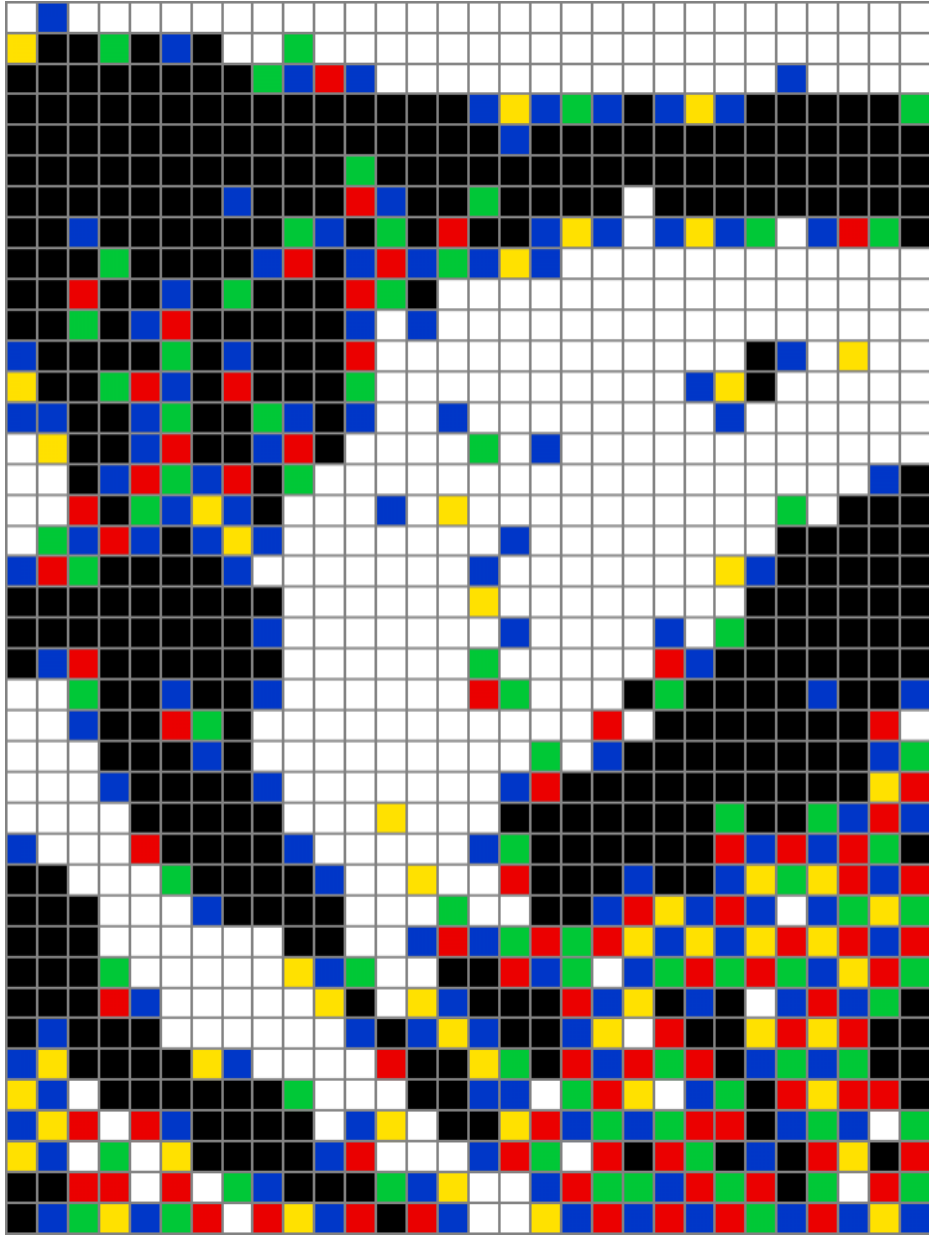
PIXEL ART



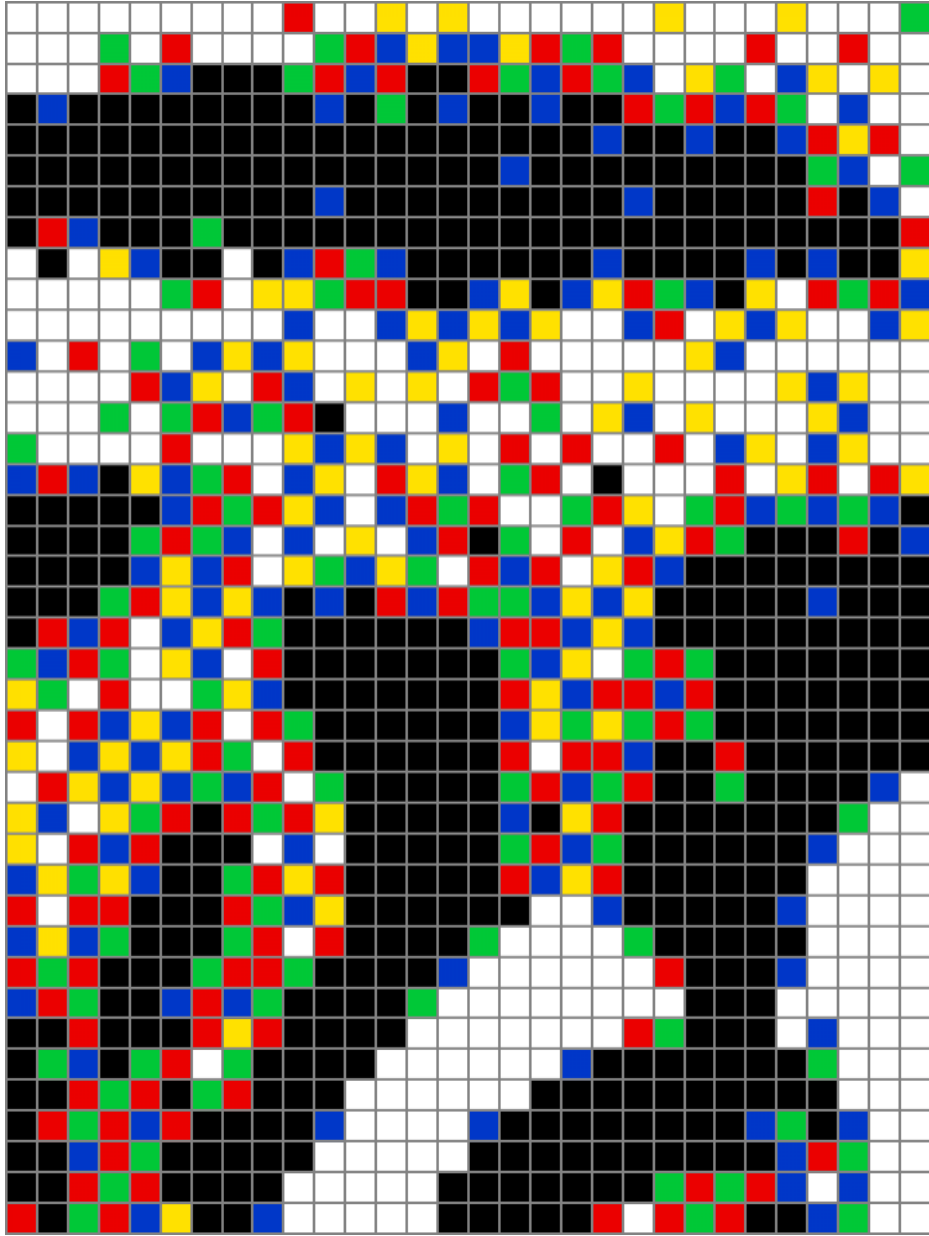
PIXEL ART



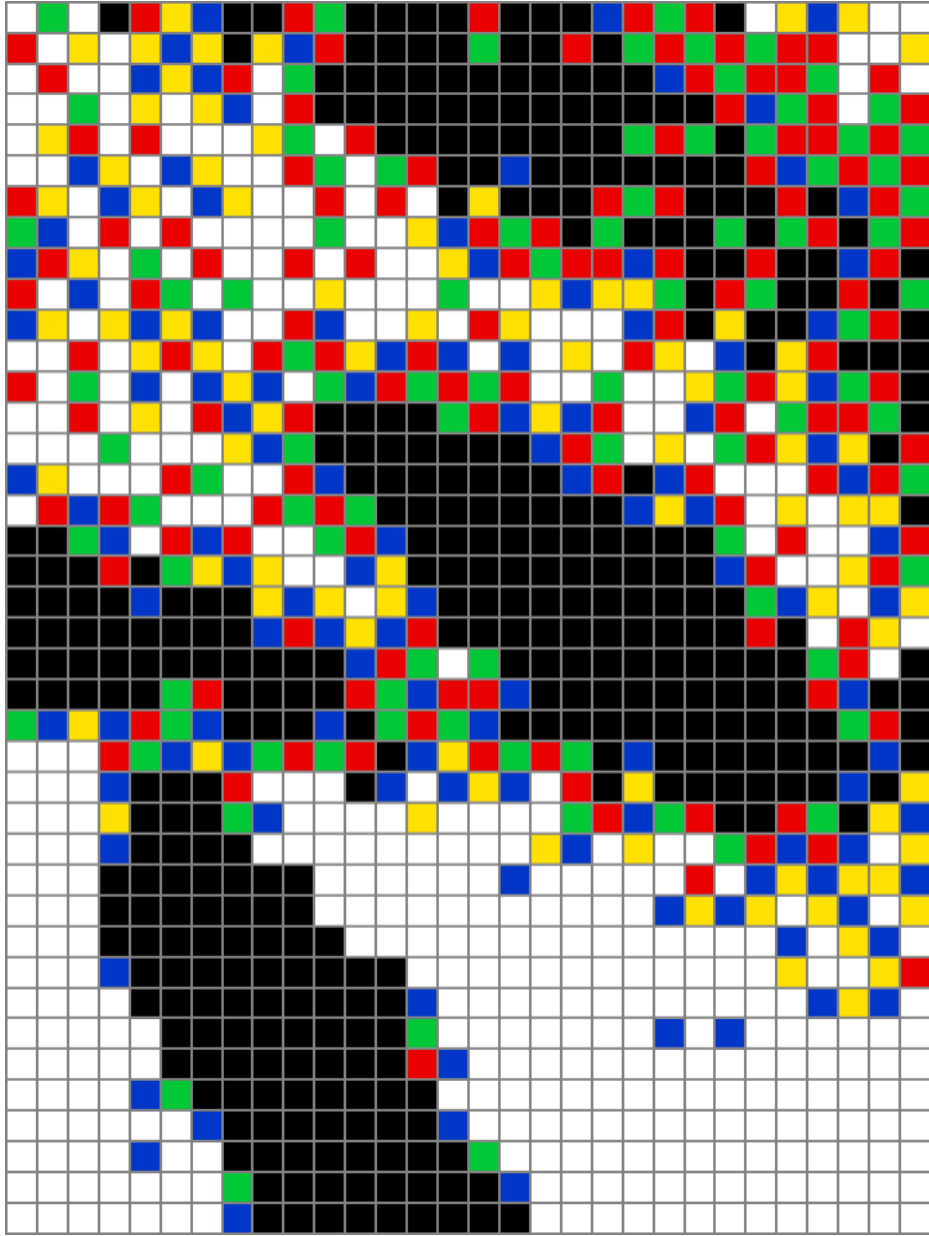
PIXEL ART



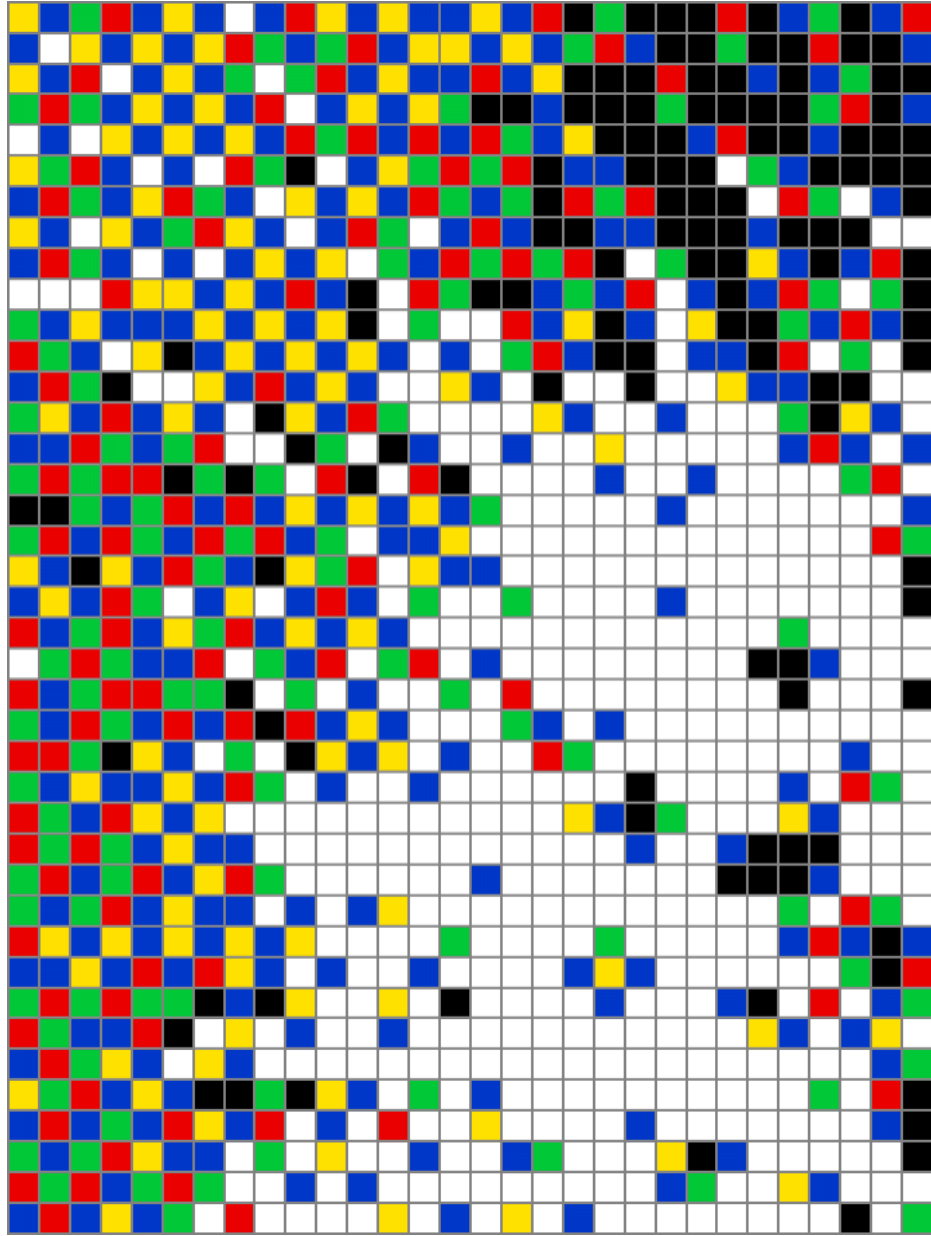
PIXEL ART



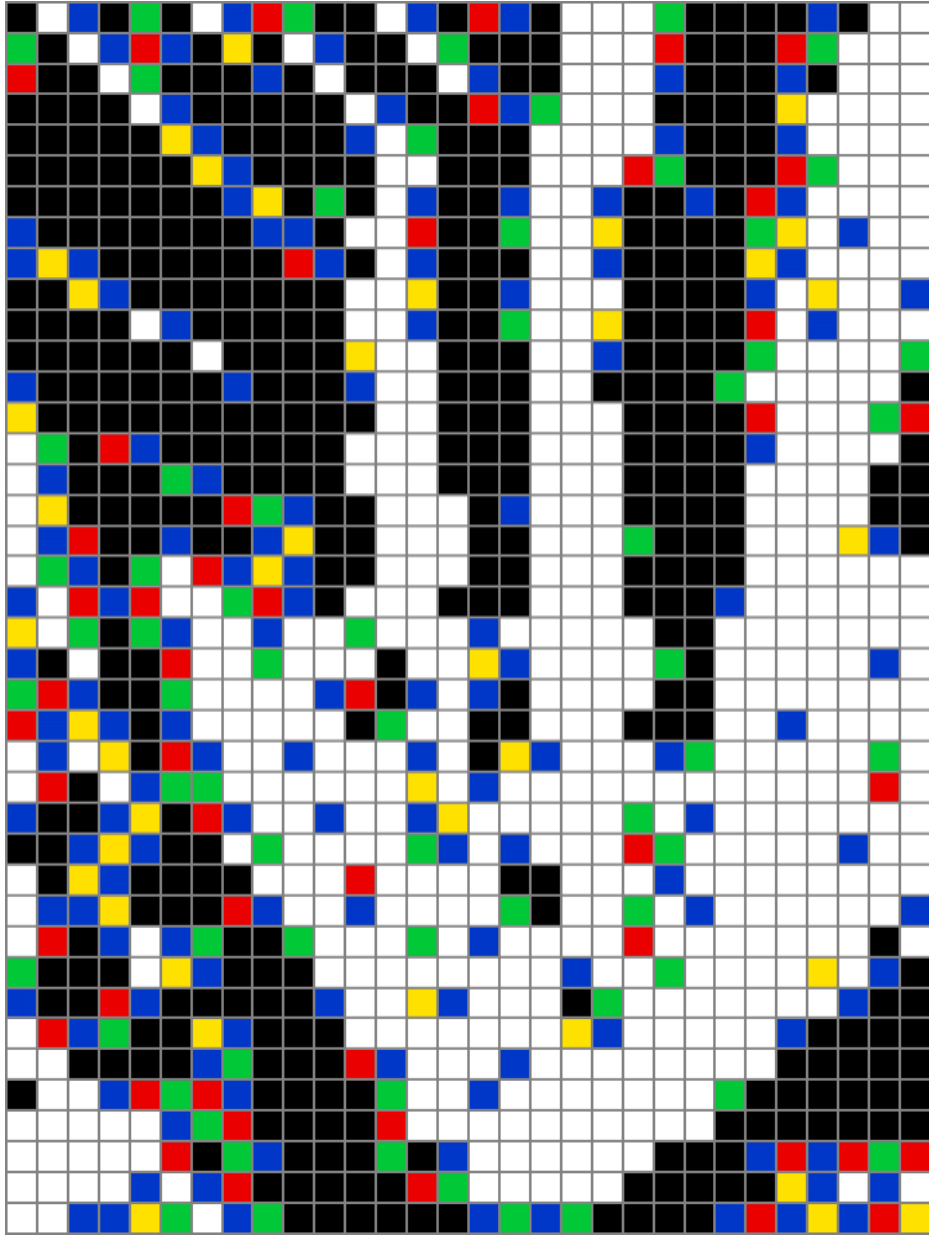
PIXEL ART



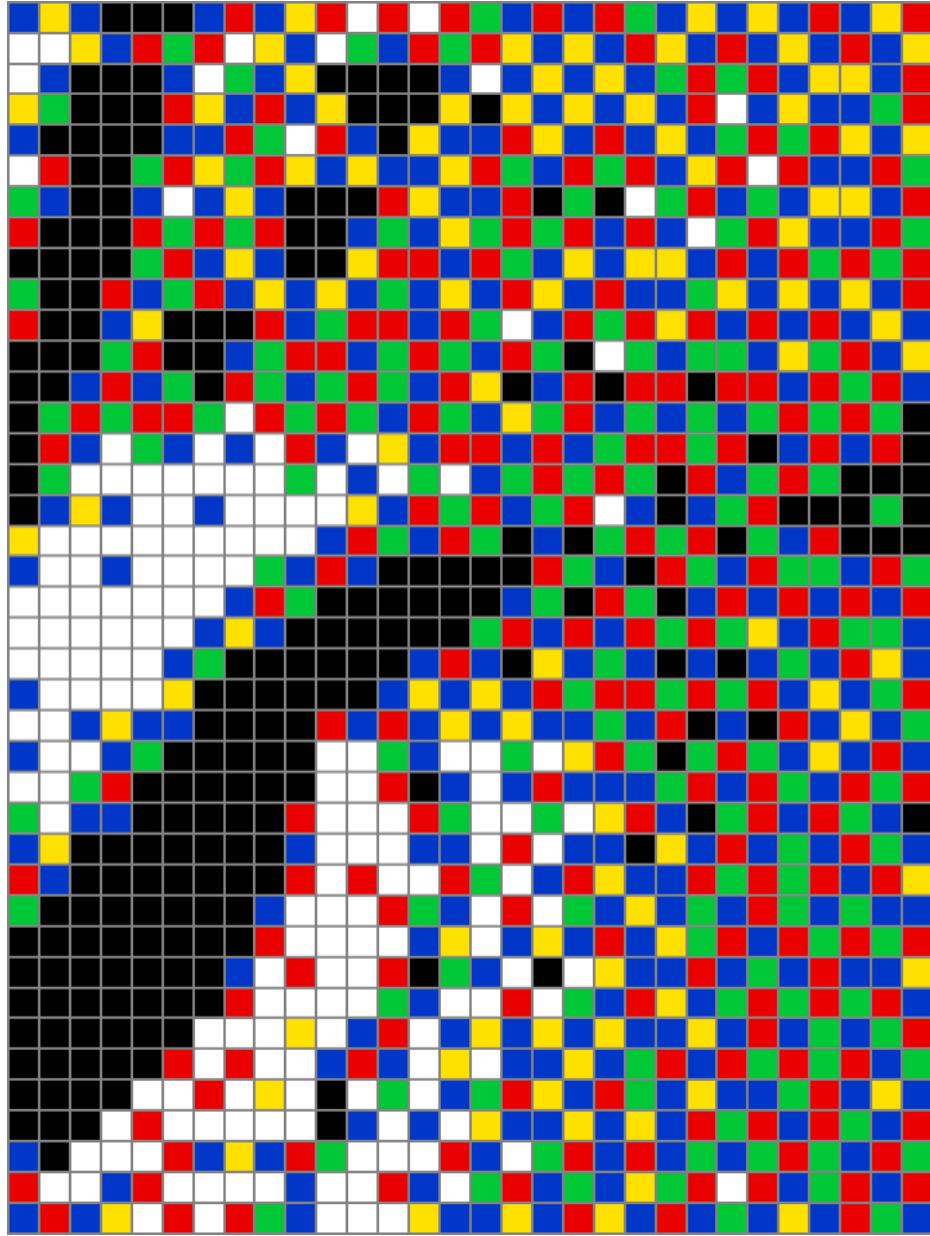
PIXEL ART



PIXEL ART

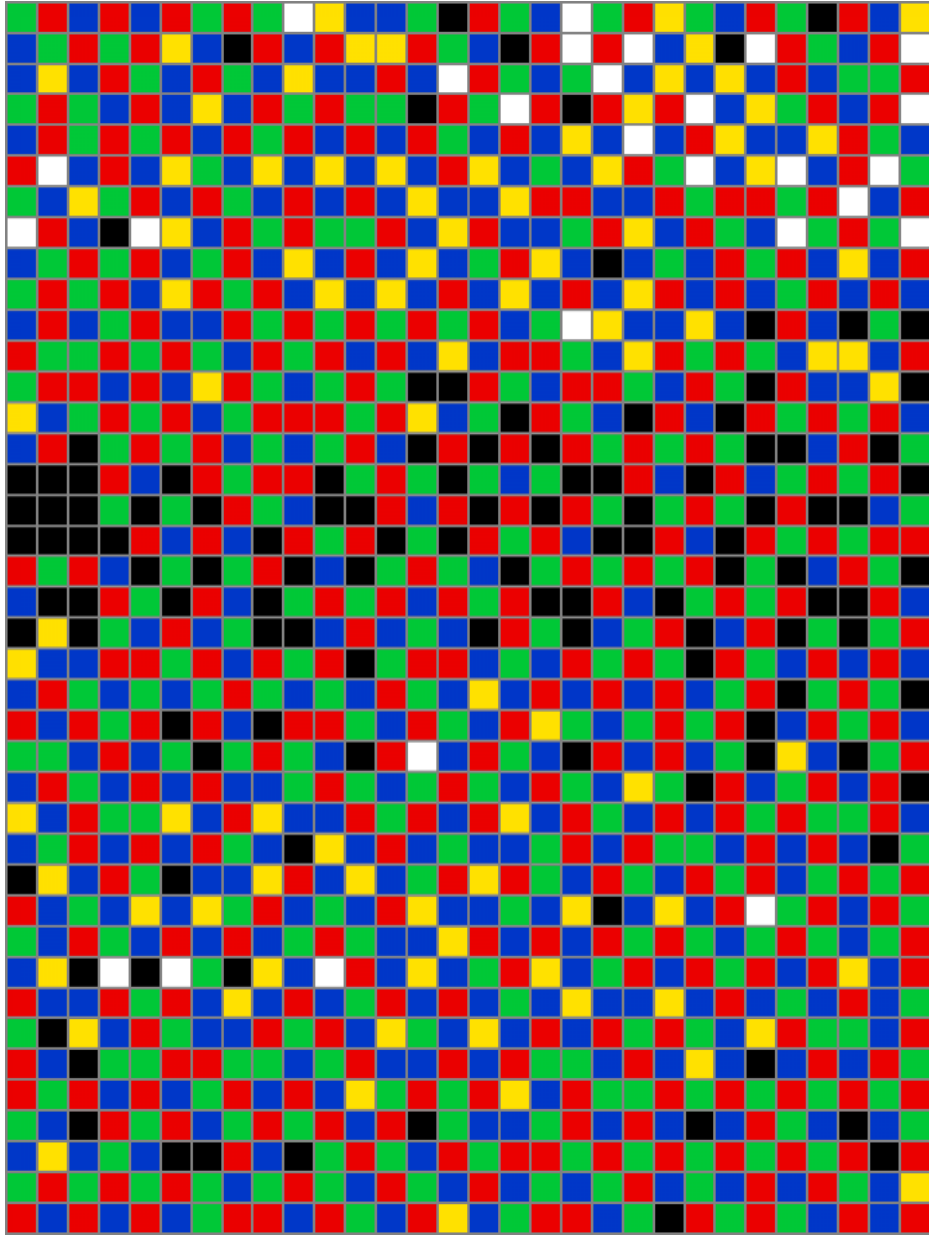


PIXEL ART



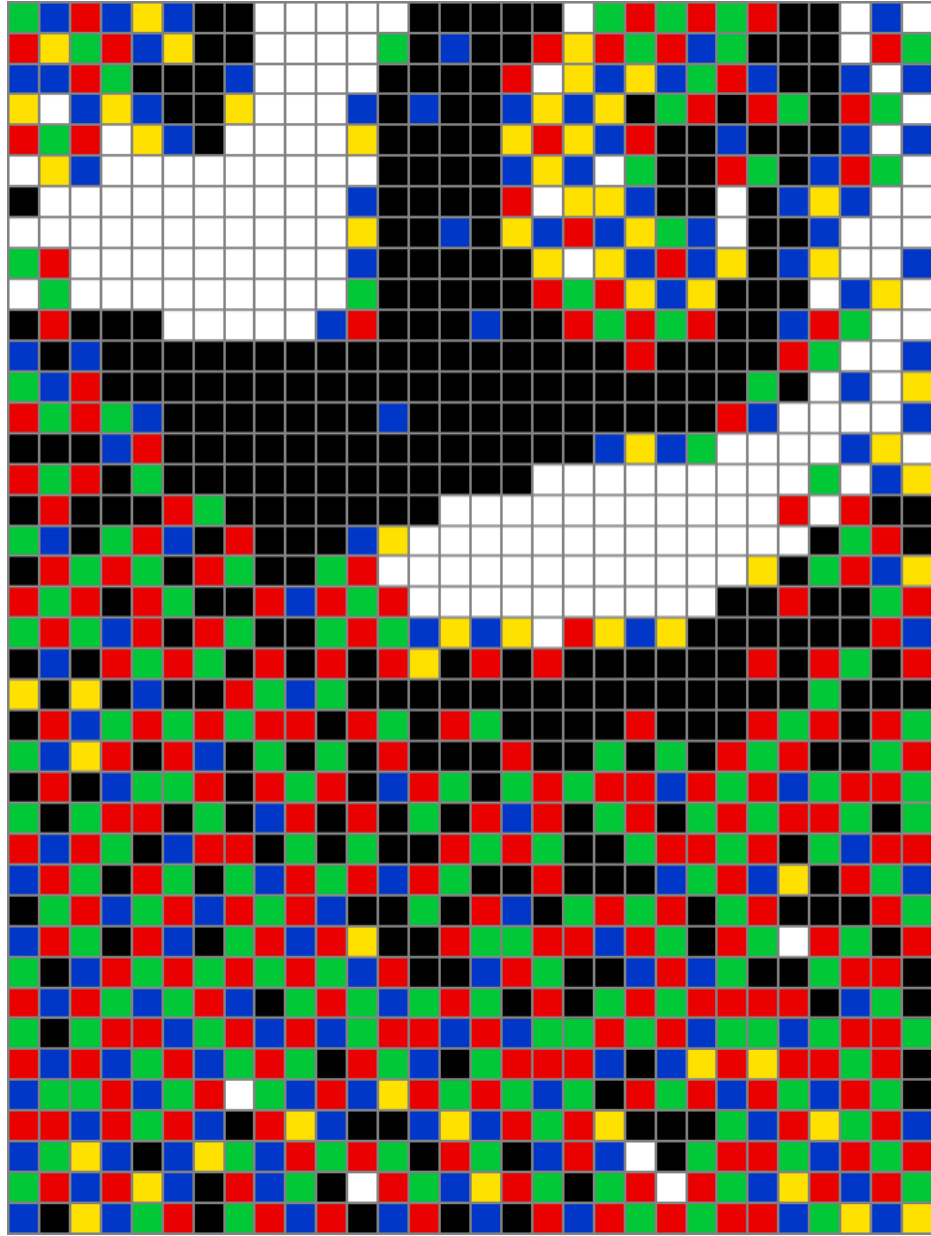


PIXEL ART



10

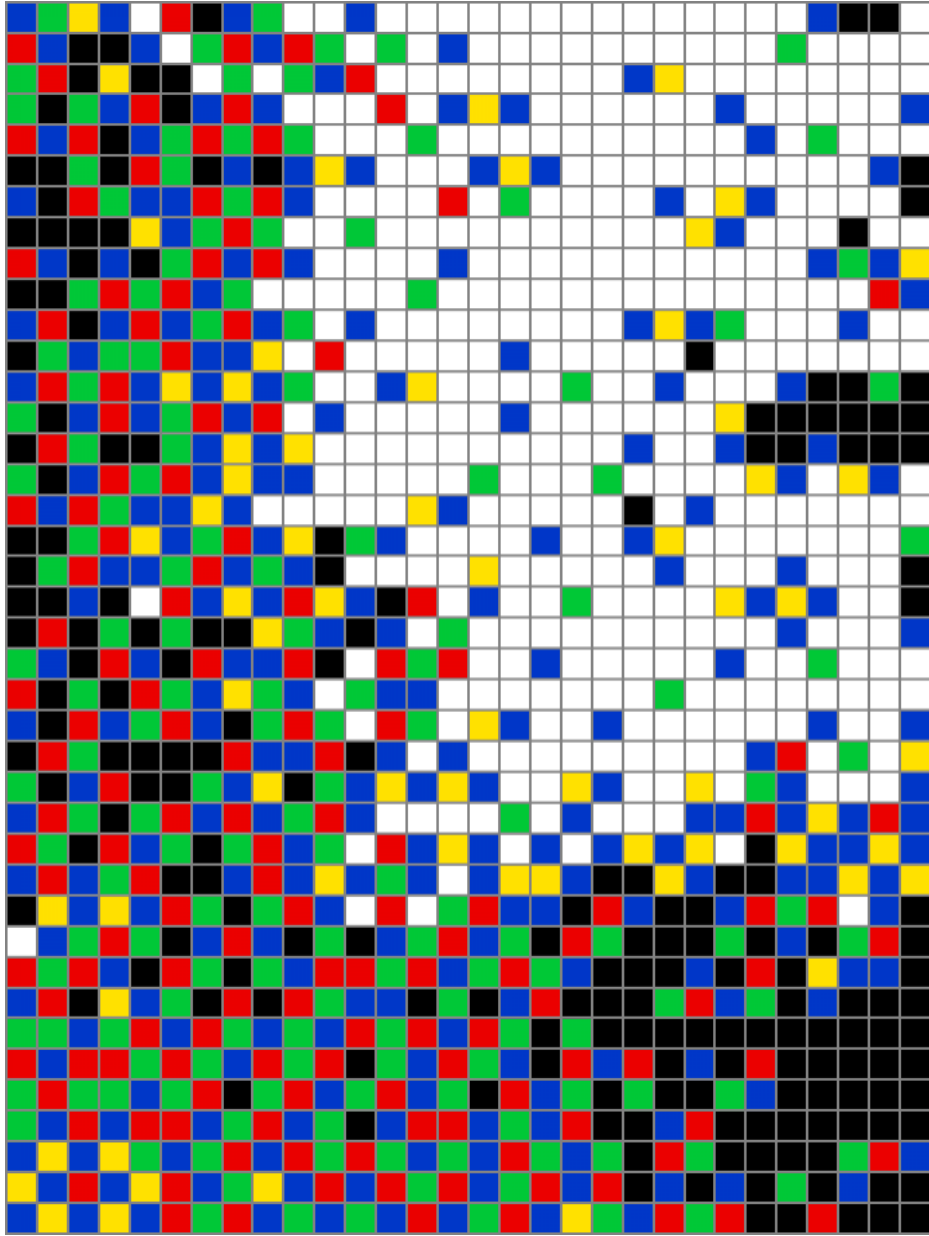
PIXEL ART



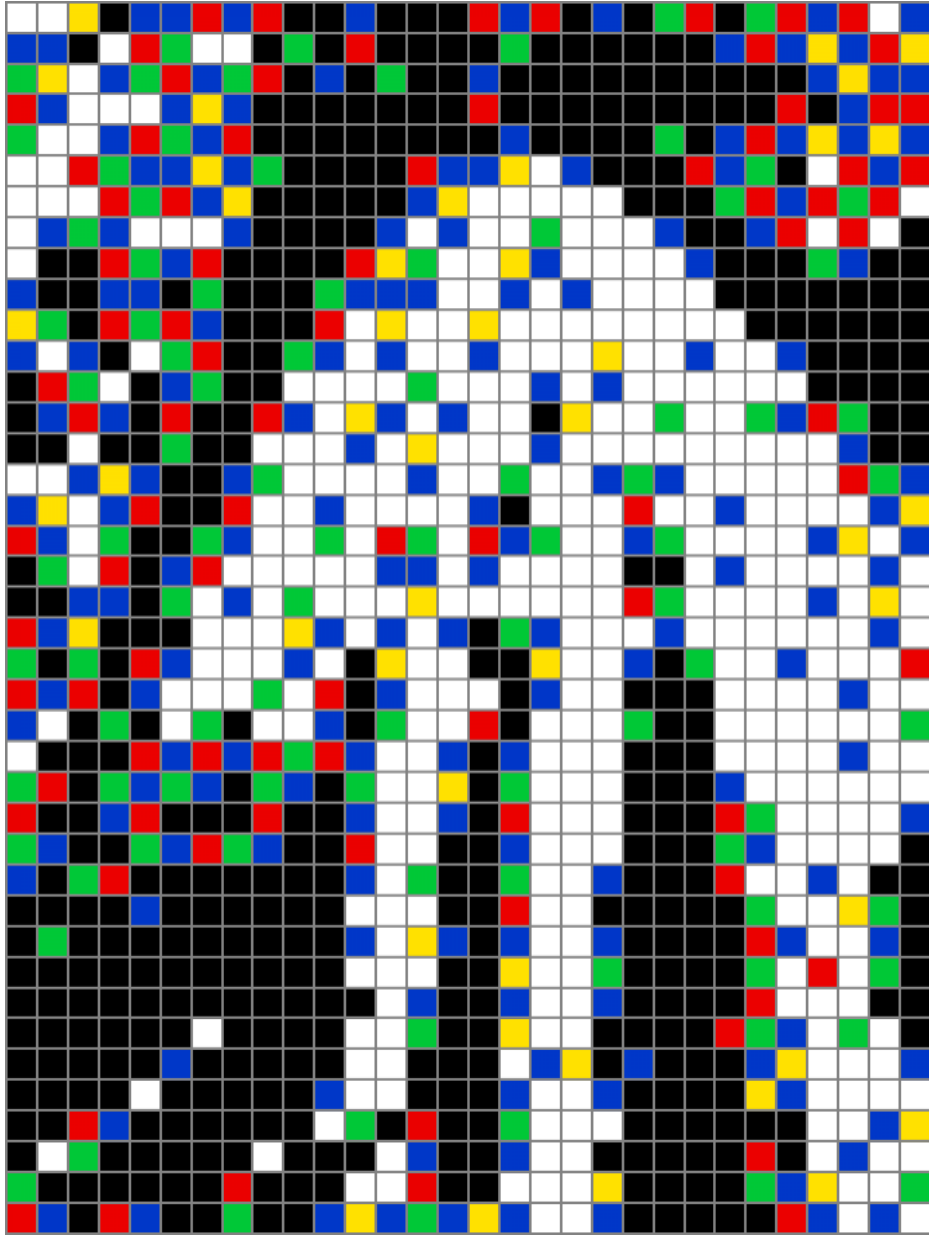
PIXEL ART



PIXEL ART

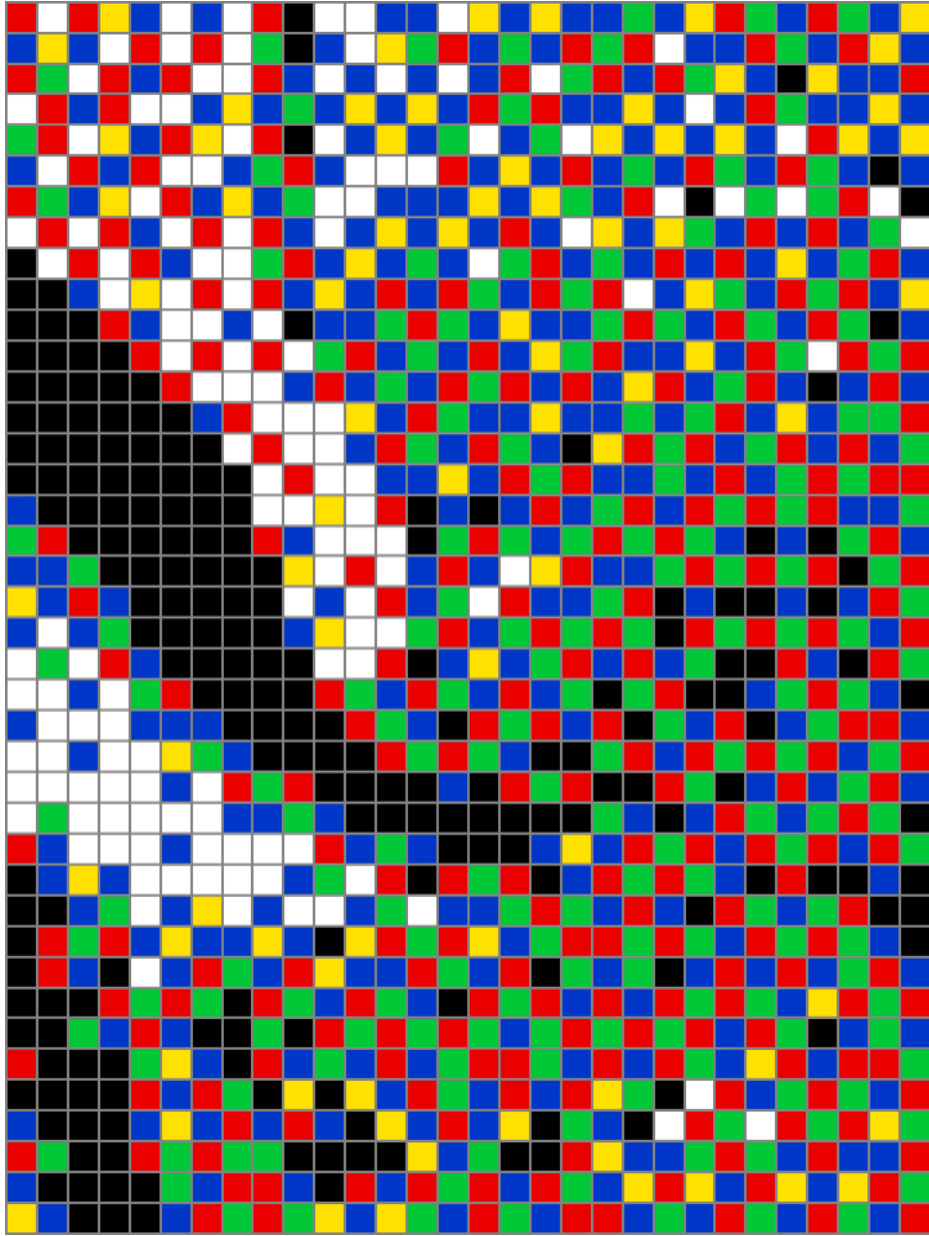


PIXEL ART





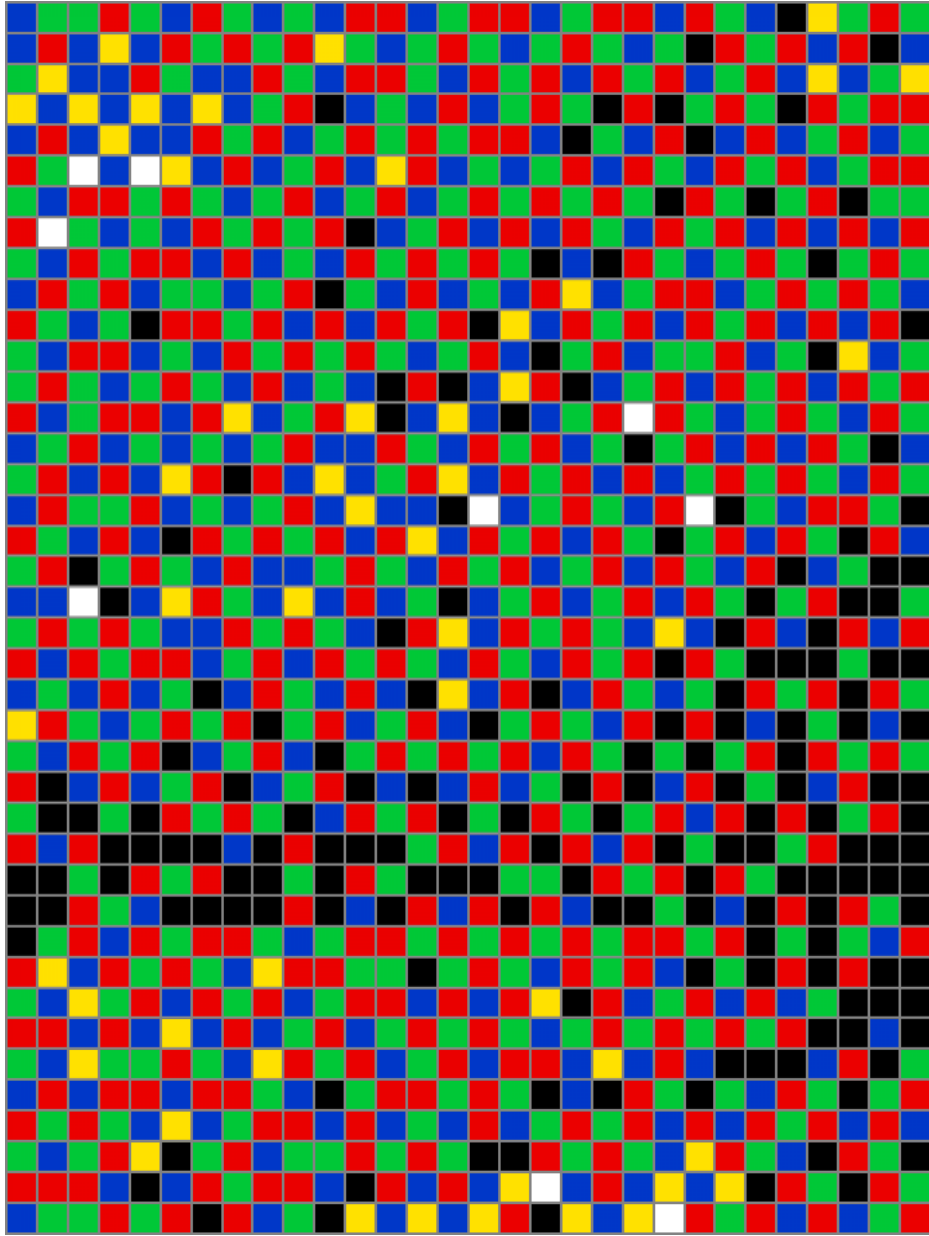
PIXEL ART



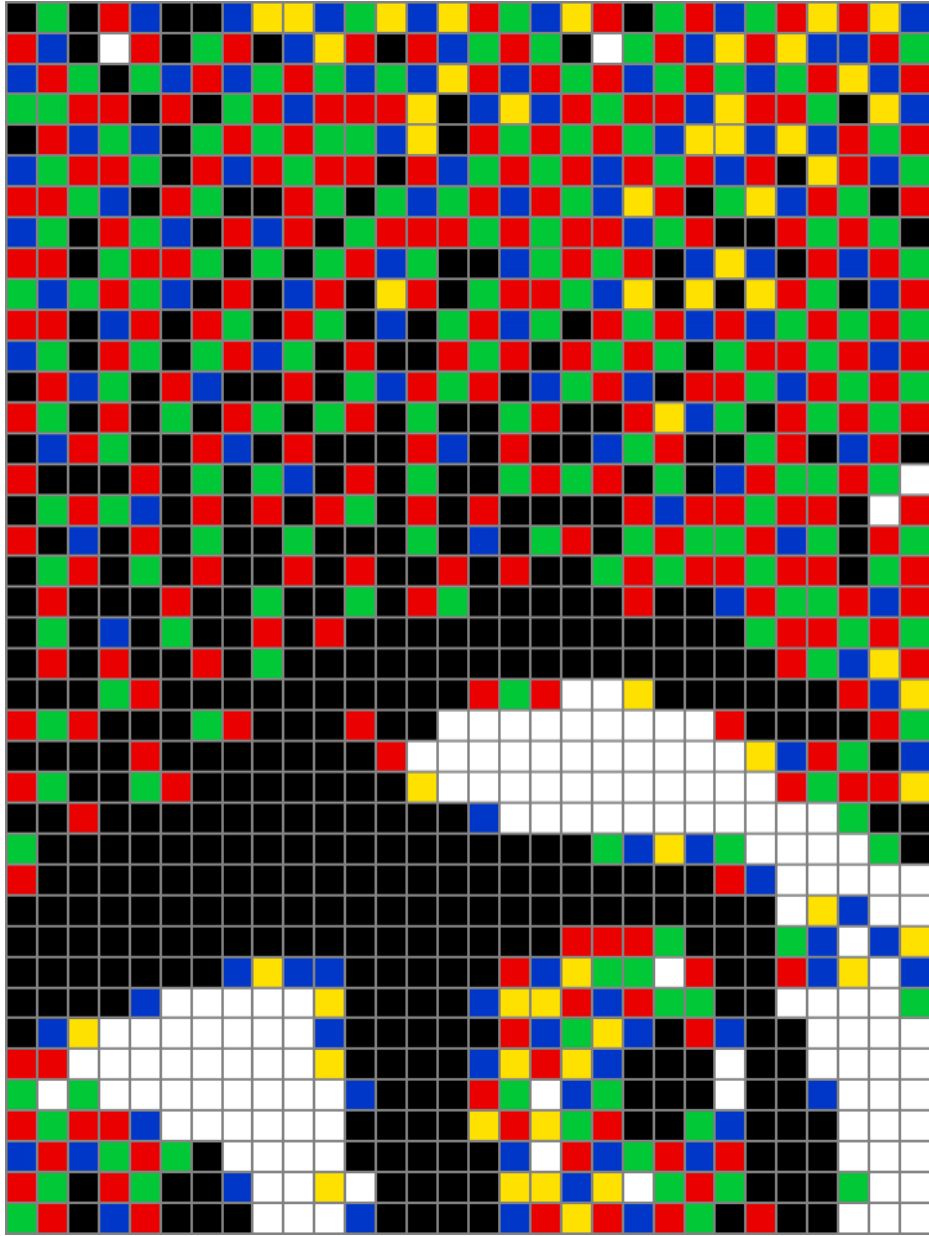
15



PIXEL ART



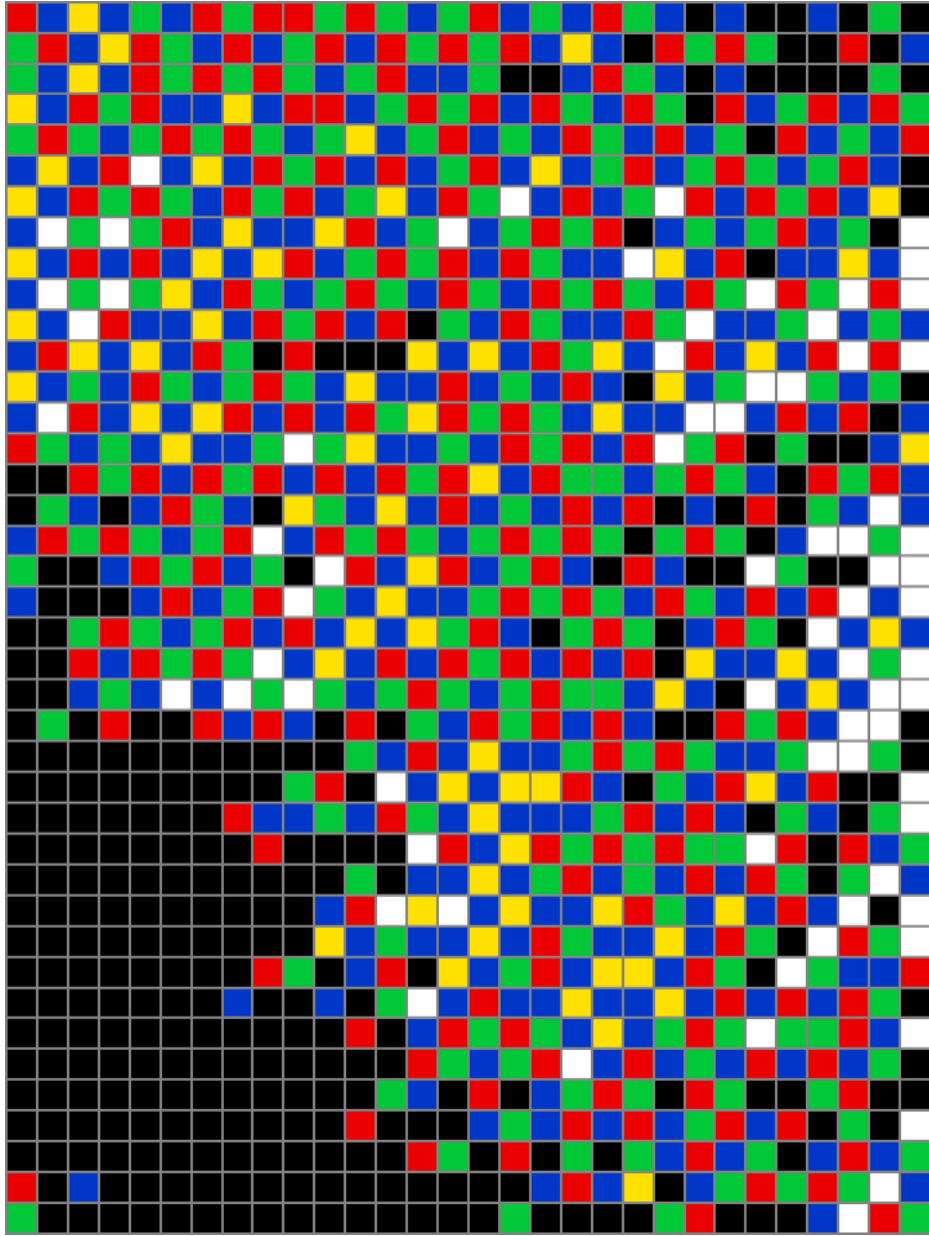
PIXEL ART



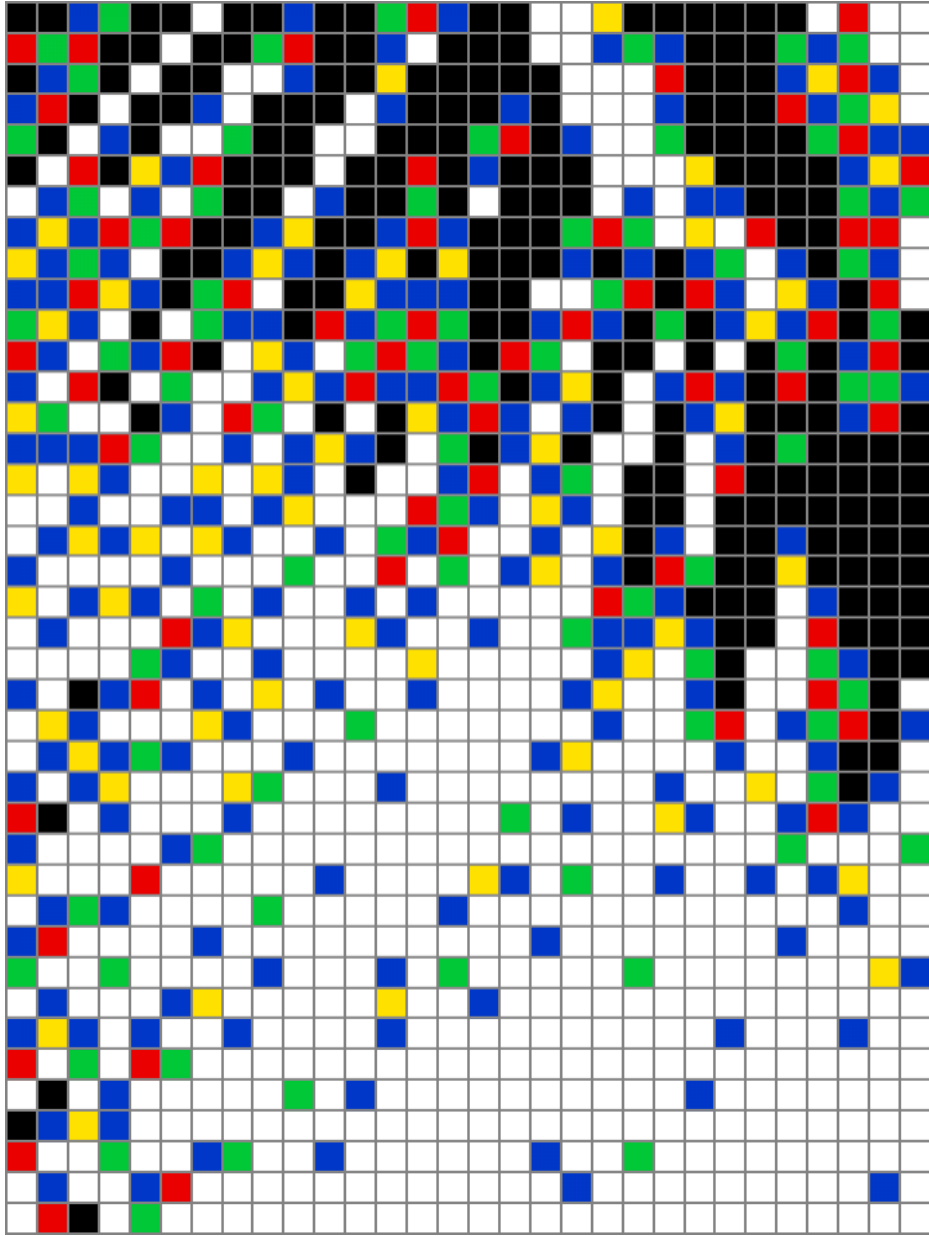
PIXEL ART



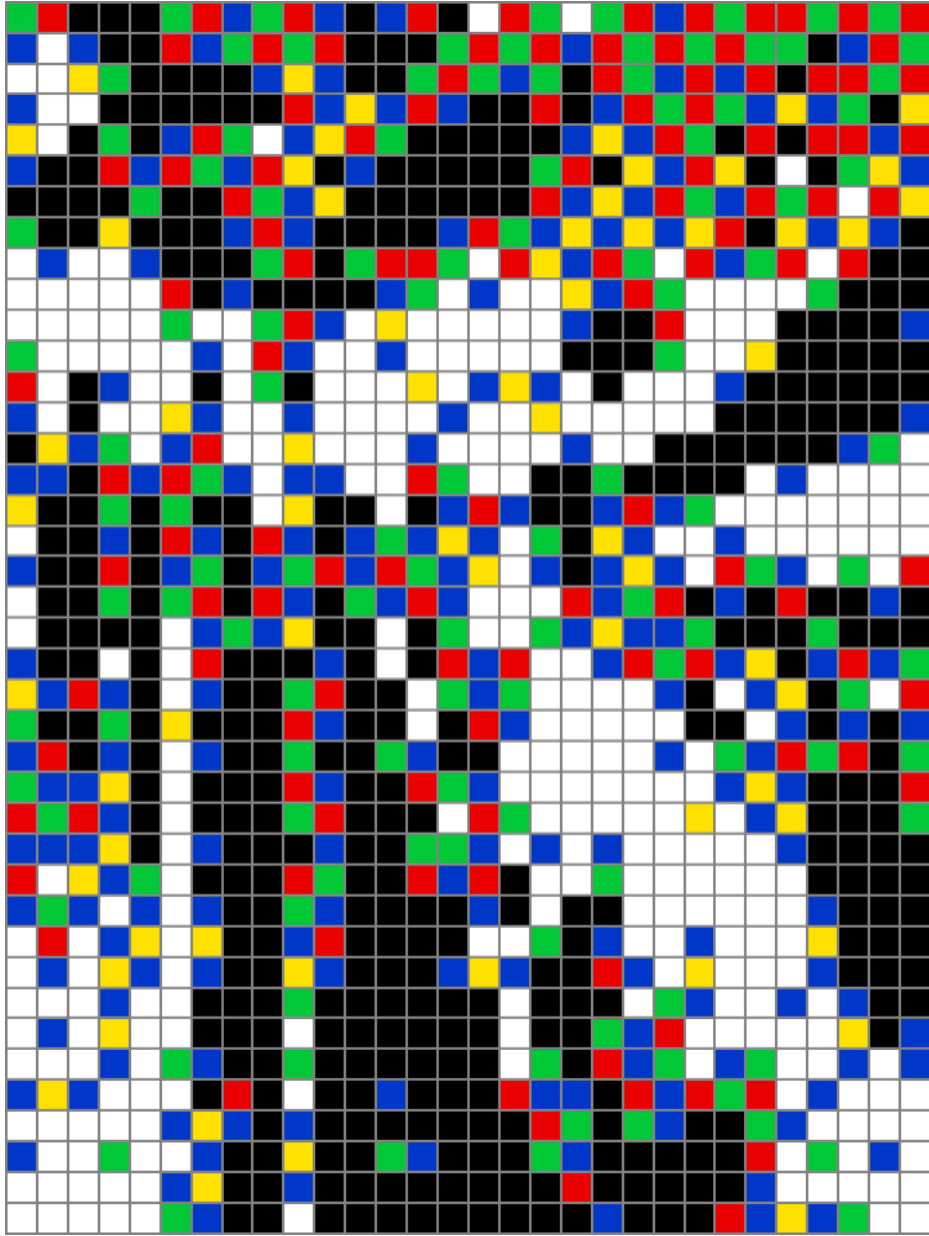
PIXEL ART



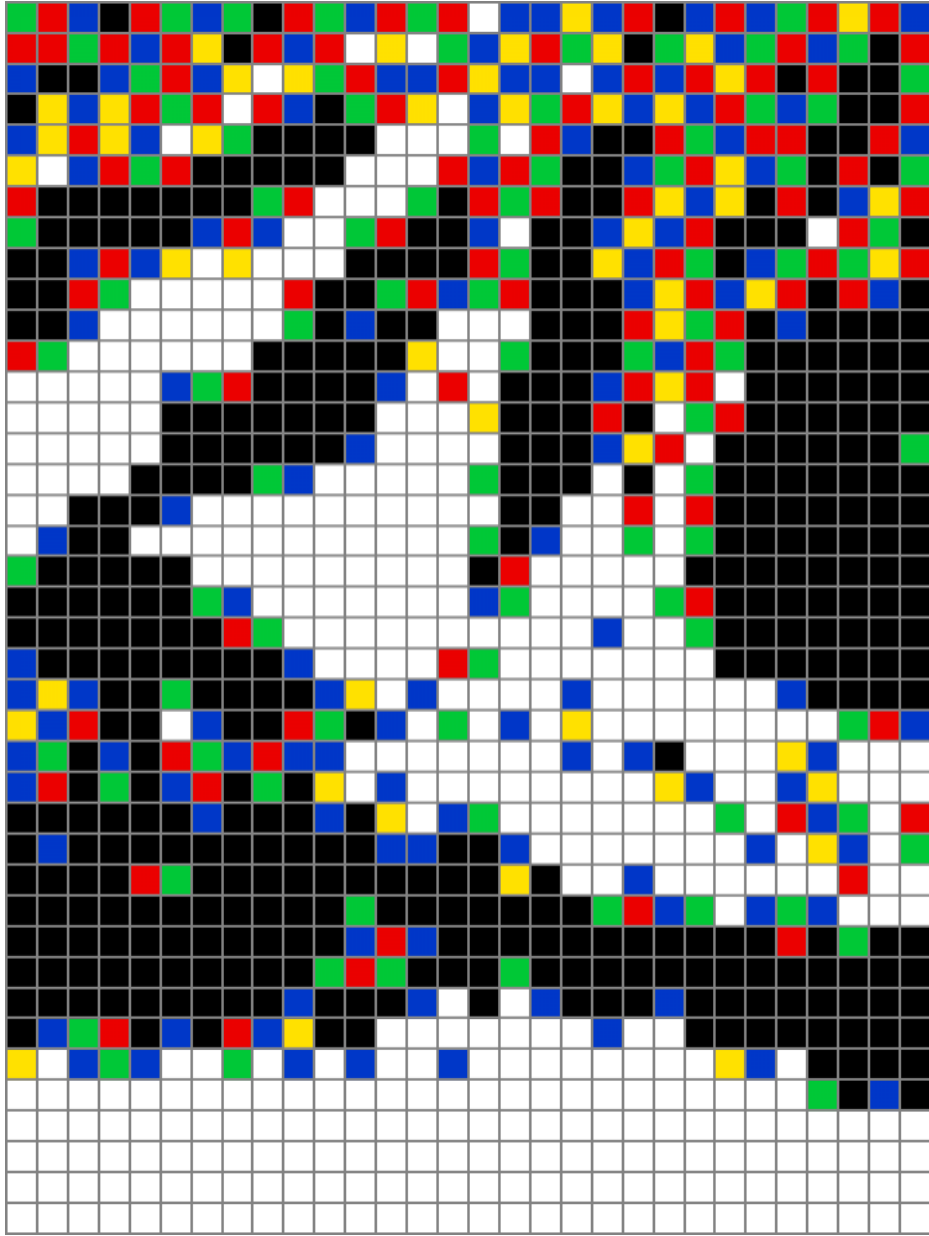
PIXEL ART



PIXEL ART



PIXEL ART



PIXEL ART



PIXEL ART

