

Please read the instruction manual carefully before using the stroller and keep it safe to refer it in the future so to make the stroller ride always safe for the child

Warning:

1. Ensure all the locking devices are engaged before use
 2. Since baby cannot control his/her head, so don't prick the backrest to use.
 3. Always lock the stroller whenever you stop anywhere to avoid automatic sliding of stroller
 4. Always use the safety belt for safe ride of baby
 5. Guardian should always be present with baby while using stroller
 6. Don't ask baby to come out from guard bar or stand up in the stroller
 7. Please do not lift the stroller when the baby is in the stroller
 8. Backrest adjustment must be done by Guardian.
- Do not put any load on handle as it affects the stability of the stroller.
9. Stroller is meant for single baby, do not put 2 babies in the stroller
 10. Please do not use the stroller on rough path or near fire.
 11. Baby stroller is for the baby 6 – 36 Months, not suitable for the child under 6 months.
 12. This stroller has maximum weight capacity of 15 kg.
 13. Please keep away the packaging plastics from the reach of child as it can cause suffocation.

Maintenance:

In order to take your child on a safe joyful ride please inspect and maintain the stroller in regular interval.

1. To open the stroller for use, please note that the locking hook must be opened.
2. Please operate the stroller as per the instruction to avoid any injury
3. Clean the fabric of stroller with brushing and cleaning tool.
4. Don't use or place the stroller in wet, cold or high temperature condition.



Instruction Manual

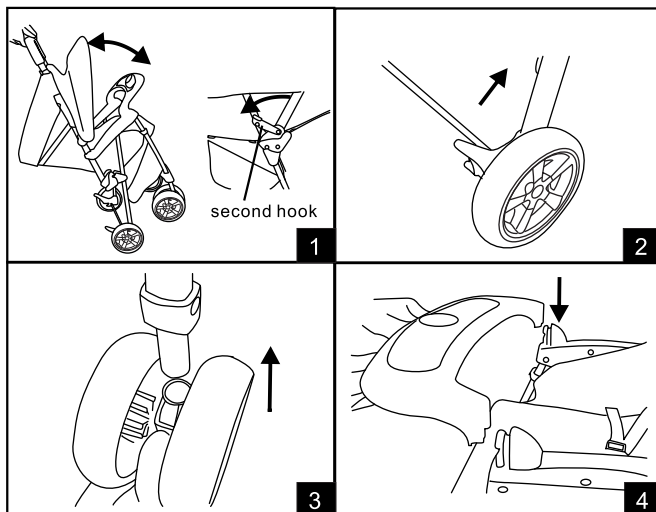
Poppins Plus





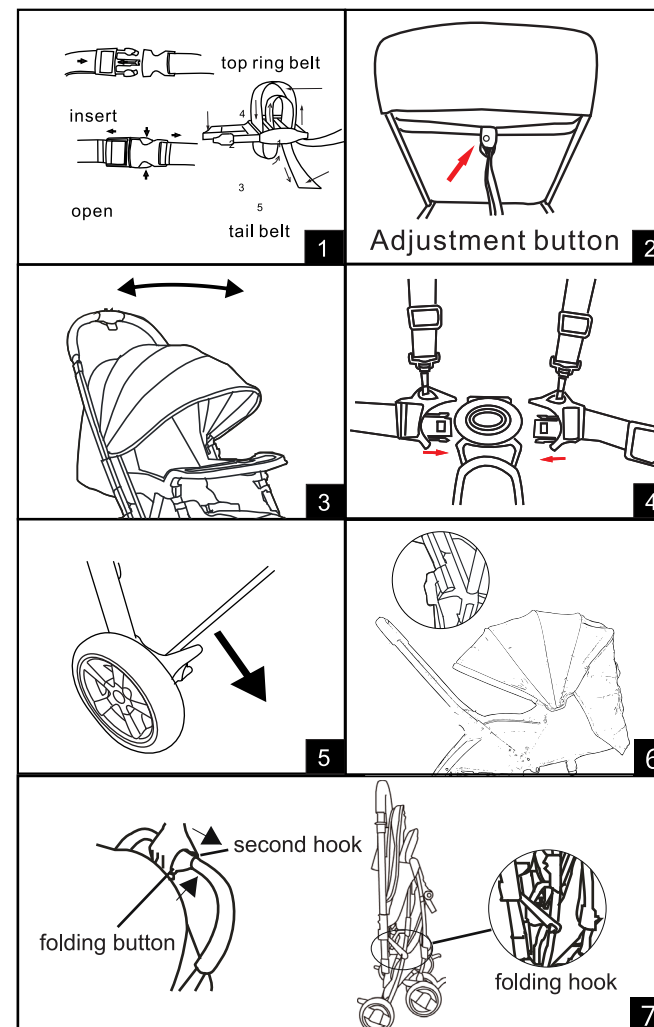
Installation Video: [youtube.com/rforrabbitt](https://www.youtube.com/rforrabbitt)

Assemble way:



1. Grasp the front foot tube and hold the push bar with other hand and pull it from both the sides and lock it with second hook.
2. Insert the rear wheels on rear side of stroller.
3. Insert the front wheel on front side of stroller.
4. Put the front tray in front tray holder.

Using way:



1. Adjust the safety belt. Insert the end socket into the safety jacket and you will hear the click sound. Press to open the safety button end socket towards inside and pull it outwards to open. You can adjust the length of the belt by adjusting the top ring belt and tail belt.
2. Tighten or Loosen the Belt to change the Recline position of the Back Seat.
3. Open or Close the Canopy as per the requirement.
4. While in use, Always use 5-Point safety harness Belt.
5. To lock the stroller put leg and press the red lock over wheels.
6. Pull the both side buttons and change the position of handle to reversible position.
7. To fold the stroller, please push the button to left and hold the folding button to press the stroller then buckle up the folding hook.