

PM-60

Pulse Oximeter

Technical Specifications

Safety

Meet the requirements of IEC60601 series, CE marking according to MDD93/42/EEC

Type of Protection Class II with internal electric power supply
 Degree of Protection BF (defibrillation proof)
 Protection Against Ingress of Liquid: IPX2

Dimension and Weight

Dimension 55(W)X120(H)X30(D)mm
 Weight Maximum weight 300g (With battery)

Operation Environment

Temperature 0~40°C
 Humidity 15~95%(non-condensing)

Storage Environment

Temperature -20°C ~ +60°C
 Humidity 10% ~ 95% (Non-condensing)

Performance Specifications

Display 2.4" color TFT
 Resolution 320×240
 Multi displays selectable Standard screen display
 Waveform display
 Trace 1 plethysmogram waveform
 Indicator Alarm indicator light
 Power indicator light
 Pulse tone
 Alarm sound
 Button tones
 Interface One dual-purpose socket for connecting SpO₂ sensor and communication cable.
 IR interface Infrared link allows downloading realtime patient data to computer
 DC Power interface Charger stand for Li-ion battery
 DC Power Requirements Input voltage 5VDC
 Power 1.2A
 Battery *Li-ion Battery*
 2 hours for charging;24 hours for continuous working

Order Information

Part Number	Description
0852B-01000	Main unit (with standard reusable sensor)
0852-10-77701	Carrying case
0852-21-77412-53	Protective cover
0852-30-77503	Battery charging kit (Euro)
0852-30-77504	Battery charging kit (US)
0852-30-77505	Battery charging kit (UK)
0852-30-77531	Pole mounting kit
0852-30-77491	Data management kit

Partial list of choices, for more details please refer to the price list.



MINDRAY™

Mindray Building, Keji 12th Road South, High-tech Industrial Park,
 Nanshan, Shenzhen 518057, P. R. China
 Tel: +86 755 2658 2888 2658 2492 Fax: +86 755 2658 2680
 E-mail: intl-market@mindray.com Website: www.mindray.com

AA batteries (for 3 pieces)36 hours for continuous working
Trend memory *Monitoring mode*
 Resolution: 2s
 Maximum time: 96h
Spot-Check mode
 Review of up to 4,000 data;
 measure up to 99 patients
Alarm User-adjustable High and Low limits
 3-level audible and visual alarm
SpO₂
 Measurement range 0~100%
 Resolution 1%
 Accuracy ±2%(70~100%,Adult/Pediatric)
 ±3%(70~100%,Neonate)
 0~69% unspecified
 Alarm range 50~100%
 Refreshing rate 1 s
 Averaging time 7 s (Sensitivity set HIGH)
 9 s (Sensitivity set MED)
 11 s (Sensitivity set LOW)
Pulse Rate
 Range 18~300bpm
 Resolution 1bpm
 Accuracy ±3bpm(non-motion)
 ±5bpm(motion)
 Alarm range 18~300bpm
 Refreshing rate 1 s
 Averaging time 7 s (Sensitivity set HIGH)
 9 s (Sensitivity set MED)
 11 s (Sensitivity set LOW)

Selectable Sensors



DISTRIBUTOR:



PM-60

Pulse Oximeter



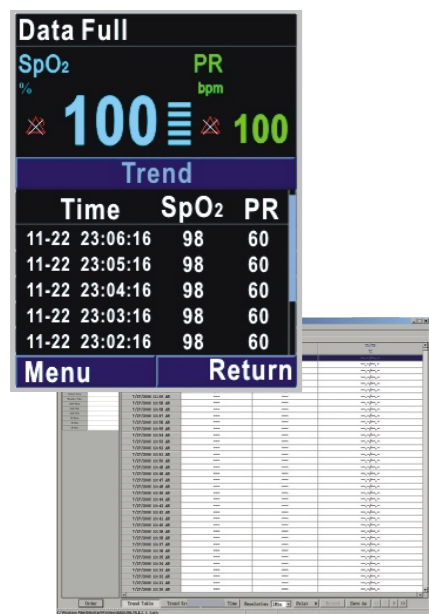


Spot Check Mode

- Auto-standby and power off during the idle status
- Auto-increase the patient IDs
- Non-alarm setting for "sensor off" occasion

Continuous Monitoring Mode

- Regular alarm handling
- Enable to input patient ID manually
- View SpO₂ waveform



Data Storage and Management Functions

For you to easily keep and view patient data.

- Spot check: 1~99 IDs with total 4000 sets of measurement
- Continuous monitoring: maximum 96 hour trend

All data can be transferred to a PC through a Windows-based software for review and regular printing.

- Suitable for adult, pediatric and neonatal patients
- High resolution 2.4" color LCD display
- Two selectable working modes: spot check and continuous monitoring
- Adjustable audible and visual alarms
- Real time data transfer by infrared technology
- Batteries to support up to 36 hour continuous working
- Protective cover and carrying case perfect for portable monitoring needs



Alarm light indicator

Slot for hanging strap

2.4" Color LCD

Navigating buttons for interface operation

Infrared transmission port

Indicator of charging and working status



Protective Cover



Carrying Case



Charger Stand