

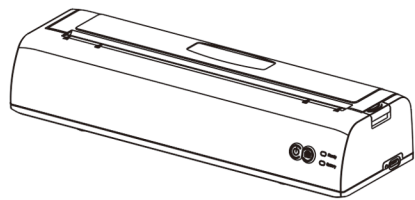


PORTABLE THERMAL LABEL PRINTER

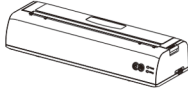
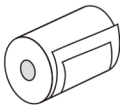
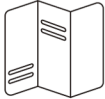
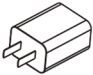

— A4/US LETTER SIZE

User Guide

4B-2081PA

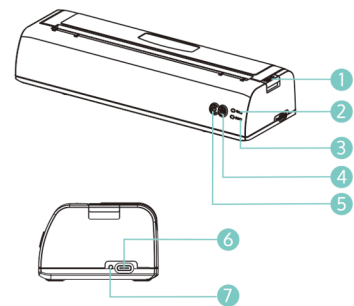


▶ What's in the box

-  1 Printer
-  2 Thermal paper roll (8.5" x 11")
-  3 User manual
-  4 Power adapter
-  5 Type C data cable

1

▶ Getting to know the label printer



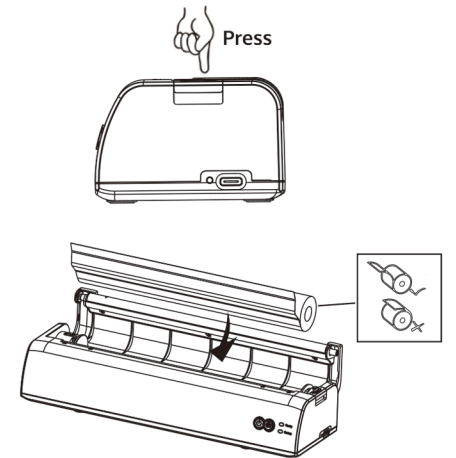
- 1 Cover opening button
- 2 Status LED
- 3 Battery LED
- 4 Feed button
- 5 Power button
- 6 USB interface/ Charge interface
- 7 Reset button

LED status description	Power light
Power light	Blue light keeps on when starting up
Battery level light	Pink light on when charging
Battery level light	Red light on when low battery
Battery level light	Blue light on when full battery

2

▶ Preparations before printing

1. Press the cover opening button to open the cover and insert the thermal paper roll into the printer.



2. Tear off excess paper along the cutter
3. Press the power button to get started

3

▶ Download the APP

Download app "XLife Pro" from Google Play Store/ Apple APP Store



or scan the below QR code



Note: Please make sure your phone's Bluetooth is turned on before using the APP.

4

▶ Specification

Printing Method:	Direct Thermal
Resolution:	203 DPI
Max Printing Speed:	20 mm/s
Max Paper Width:	8.5 inch
Max Label Roll Diameter:	30 mm
Support System:	Windows / Mac OS
Built-in Battery:	1200mAh 11.1V
Input:	5V / 2A
Connectivity Technology:	- USB (for computer printing, need to download driver) - Bluetooth (for smartphone / tablet printing, need to download APP)

5

▶ Maintenance Guide

Following these simple maintenance guidelines will ensure the printer longer life with quality printing performance.

General Cleaning - Maintain the exterior of your printer by periodically wiping it with a soft cloth dampened with water. Avoid using abrasive cleaners, as they may harm the surfaces.

Cleaning the Print Head - When handled during installation, and over time, the print head may become contaminated resulting in poor print quality. After installing a new print head or after using a roll of media, rub the cleaning pen across the dark area of the print head. Allow the print head to dry for one minute before loading labels.

⚠ Warning

This manual contains proprietary information of this printer manufacturer. It is intended solely for the information and use of parties operating and maintaining the equipment described herein. Such proprietary information may not be used, reproduced, or disclosed to any other parties for any other purpose without the express written permission of this printer manufacturer.

6

▶ FCC statement

Changes or modifications not expressly approved by the party responsible for compliance could void the user's authority to operate the equipment.

NOTE: This equipment has been tested and found to comply with the limits for a Class B digital device, pursuant to Part 15 of the FCC Rules. These limits are designed to provide reasonable protection against harmful interference in a residential installation. This equipment generates uses and can radiate radio frequency energy and, if not installed and used in accordance with the instructions, may cause harmful interference to radio communications. However, there is no guarantee that interference will not occur in a particular installation. If this equipment does cause harmful interference to radio or television reception, which can be determined by turning the equipment off and on, the user is encouraged to try to correct the interference by one or more of the following measures:

7

- Reorient or relocate the receiving antenna.
- Increase the separation between the equipment and receiver.
- Connect the equipment into an outlet on a circuit different from that to which the receiver is connected.
- Consult the dealer or an experienced radio/TV technician for help.

NOTE: This device and its antenna(s) must not be co-located or operation in conjunction with any other antenna or transmitter.

RF Exposure Statement

- To maintain compliance with FCC's RF Exposure guidelines. This equipment should be installed and operated with minimum distance of 20cm the radiator your body.
- This device and its antenna(s) must not be co-located or operation in conjunction with any other antenna or transmitter.

8



Thank you so much for the purchase!

Register and get extended warranty

www.offnova.com