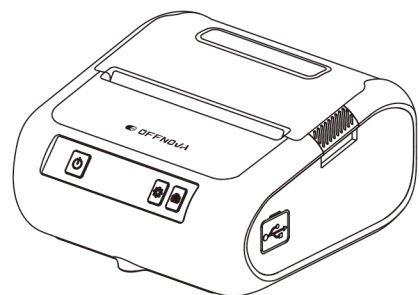
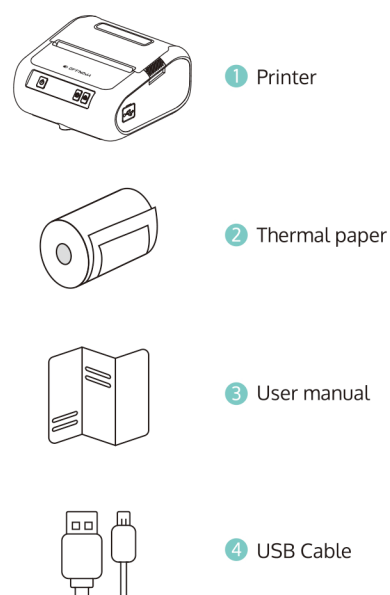


# PORTABLE THERMAL LABEL PRINTER User Guide

TSC-2043PB

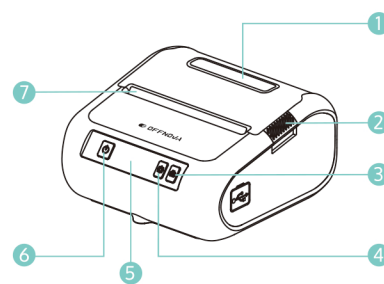


## ▶ What's in the box



1

## ▶ Getting to know the Label printer

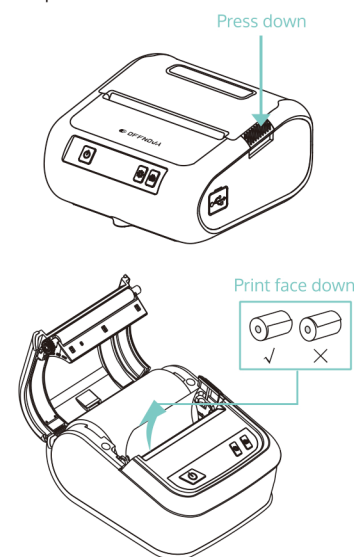


- 1 Upper Cover
- 2 Upper Cover Opening Button
- 3 Feed Button
- 4 Menu Button
- 5 Display Screen
- 6 Power Button
- 7 Paper Outlet

2

## ▶ Preparations before printing

1. Open the cover and insert the thermal paper roll into the printer.



2. Press the power button to get started

3

## ▶ Download the APP

Download app "4Barcode" from Google Play Store/Apple APP Store



or scan the below QR code



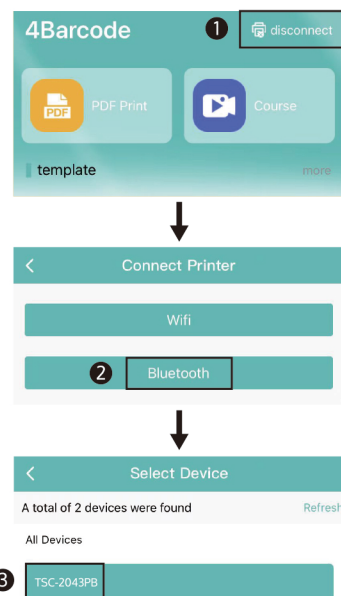
**Note:** Please make sure your phone's Bluetooth is turned on before using the APP.

The default PIN code is 0000 for the first time you use it.

4

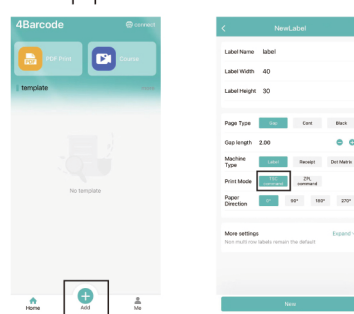
## ▶ How-tos

1. Turn on your phone's Bluetooth to connect to the printer via APP



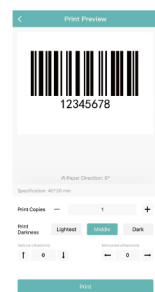
5

2. Create new document based on the type of thermal paper



**Note:** The printer mode must be TSC command always.

3. Print after preview



6

## ▶ FCC statement

Changes or modifications not expressly approved by the party responsible for compliance could void the user's authority to operate the equipment.

**NOTE:** This equipment has been tested and found to comply with the limits for a Class B digital device, pursuant to Part 15 of the FCC Rules. These limits are designed to provide reasonable protection against harmful interference in a residential installation. This equipment generates uses and can radiate radio frequency energy and, if not installed and used in accordance with the instructions, may cause harmful interference to radio communications. However, there is no guarantee that interference will not occur in a particular installation. If this equipment does cause harmful interference to radio or television reception, which can be determined by turning the equipment off and on, the user is encouraged to try to correct the interference by one or more of the following measures:

7

- Reorient or relocate the receiving antenna.
- Increase the separation between the equipment and receiver.
- Connect the equipment into an outlet on a circuit different from that to which the receiver is connected.
- Consult the dealer or an experienced radio/TV technician for help.

**NOTE:** This device and its antenna(s) must not be co-located or operation in conjunction with any other antenna or transmitter.

### RF Exposure Statement

- To maintain compliance with FCC's RF Exposure guidelines. This equipment should be installed and operated with minimum distance of 20cm the radiator your body.
- This device and its antenna(s) must not be co-located or operation in conjunction with any other antenna or transmitter.

8