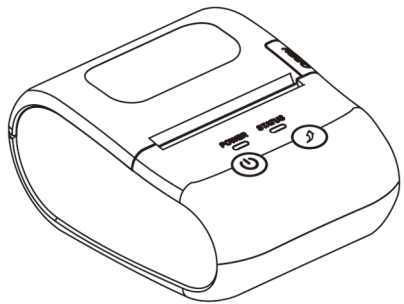




# PORTABLE THERMAL LABEL PRINTER User Guide

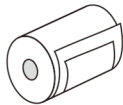
TSC-2023B



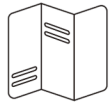
## ▶ What's in the box



1 Printer



2 Thermal paper



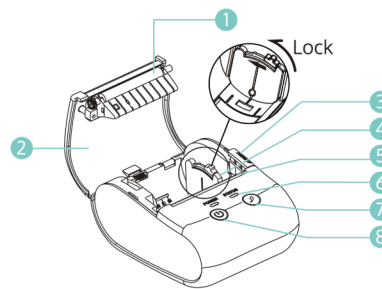
3 User manual



4 USB Cable

1

## ▶ Getting to know the label printer

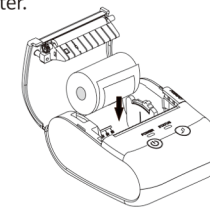


- 1 Roller
- 2 Cover
- 3 Cover opening button
- 4 Paper baffle
- 5 Paper exit
- 6 Indicator
- 7 Feeder button
- 8 Power button

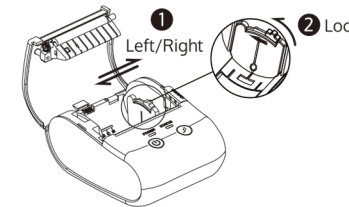
2

## ▶ Preparations before printing

1. Open the cover and insert the thermal paper roll into the printer.



2. Adjust the paper baffle by sliding it left and right according to the width of the thermal paper, and finally turn the key on the paper baffle upward to lock the paper baffle.



3. Press the power button to get started

3

## ▶ Download the APP

Download app "4Barcode" from Google Play Store/Apple APP Store



or scan the below QR code

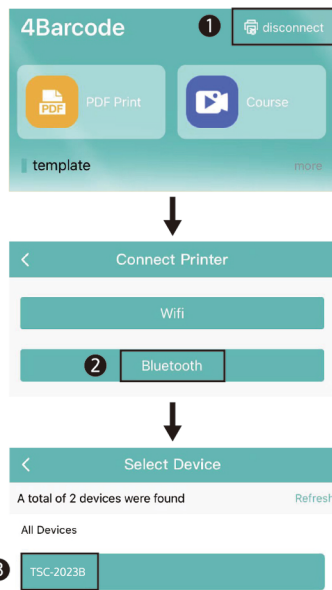


**Note:** Please make sure your phone's Bluetooth is turned on before using the APP.

4

## ▶ How-tos

1. Turn on your phone's Bluetooth to connect to the printer via APP



5

2. Make sure if the current print mode of printer matches the thermal paper type

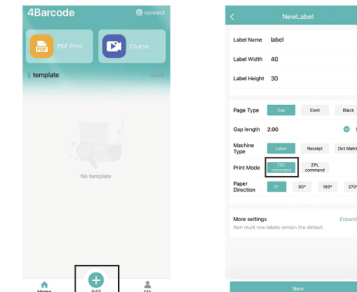
- For label printing (default mode)
- For Blackmark label / receipt printing (Switching instructions are as follows)



Press "Power button" & "Feeder button" at the same time to enter the menu mode, then click the "feeder button" to switch the print mode:  
Click once to select label mode  
Click twice to select Blackmark label mode  
Click three times to select receipt mode

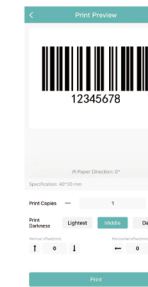
6

3. Create new document based on the type of thermal paper



**Note:** The printer mode must be TSC command always.

4. Print after preview



7

## ▶ Get to know the printer status via indicator light

| Power Light     | Status Light                        | Status prompt            |
|-----------------|-------------------------------------|--------------------------|
| Greenlight on   | -                                   | Bluetooth not connected  |
| Greenlight on   | Greenlight on                       | Bluetooth connected      |
| Redlighttwinkle | -                                   | Low battery              |
| Greenlight on   | Redlight twinkle at 500ms frequency | Printer out of paper     |
| Greenlight on   | Redlight twinkle at 200ms frequency | Printer over temperature |

## ▶ Get to know the battery status via colors

| Power light         | Status prompt              |
|---------------------|----------------------------|
| Redlight twinkle    | Battery level < 40%        |
| Yellowlight twinkle | 40% ≤ Battery level ≤ 70%  |
| Greenlight twinkle  | 70% < Battery level < 100% |
| Greenlight on       | Battery full               |

8

## ▶ FCC statement

Changes or modifications not expressly approved by the party responsible for compliance could void the user's authority to operate the equipment.

**NOTE:** This equipment has been tested and found to comply with the limits for a Class B digital device, pursuant to Part 15 of the FCC Rules. These limits are designed to provide reasonable protection against harmful interference in a residential installation. This equipment generates uses and can radiate radio frequency energy and, if not installed and used in accordance with the instructions, may cause harmful interference to radio communications. However, there is no guarantee that interference will not occur in a particular installation. If this equipment does cause harmful interference to radio or television reception, which can be determined by turning the equipment off and on, the user is encouraged to try to correct the interference by one or more of the following measures:

9

- Reorient or relocate the receiving antenna.
- Increase the separation between the equipment and receiver.
- Connect the equipment into an outlet on a circuit different from that to which the receiver is connected.
- Consult the dealer or an experienced radio/TV technician for help.

**NOTE:** This device and its antenna(s) must not be co-located or operation in conjunction with any other antenna or transmitter.

**RF Exposure Statement**  
-- To maintain compliance with FCC's RF Exposure guidelines. This equipment should be installed and operated with minimum distance of 20cm the radiator your body.  
-- This device and its antenna(s) must not be co-located or operation in conjunction with any other antenna or transmitter.

10



Thank you so much for the purchase!  
Register and get extended warranty

[www.offnova.com](http://www.offnova.com)