

► What's in the box

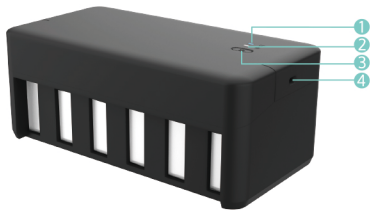


CISS x 1



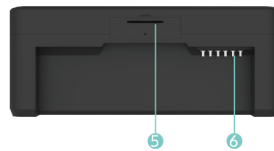
Tray x 1
(For L805 Only)

► Getting to know the CISS



1. Power indicator (in blue)
2. Stirring indicator (in white)
3. Power button
4. Battery charging port

1



5. Battery case cover
6. Ink tube connector

Getting to know the power button

• OFFNOVA talks via indicator

- Power indicator (in blue)
Steady on, battery is enough
Blinking, battery is low
- Stirring indicator (in white)
Steady on, pause stirring
Blinking, stirring in

• How does the power button work?

- Short press: power on, turn on/off stirring
- Long press: power off

► Specification

Wattage: 0.4W
 Rated input voltage: 5V
 Rated input current: 2A
 Built-in battery: 2600mAh 3.7V
 Storage Temp.: 10°C~38°C
Suitable for inkjet printers with 6 ink tank

2

► How-tos

Step 1: Unboxing

Open the packaging and briefly press the power button. Observe the battery indicator; if it's blinking in blue, please charge it before use.

Step 2: Connection

Ensure that the CISS has sufficient battery power. Connect the printer tubes to the CISS's ink tube connector corresponding colors.

Step 3: Ink Filling

Pour DTF ink of different colors into the CISS with matching color labels.

Step 4: Activate Smart Stirring

Press the power button to activate the intelligent stirring function.

Step 5: Printing Operation

Operate the printer to allow ink to flow from the CISS into the printer's ink chambers. Printing can commence once the entire pipeline is filled with ink.

Note: It is recommended to follow these steps carefully to ensure optimal performance and print quality.

3

► Trouble shoot

Problem	Issue & possible causes
Ink Leakage	<ul style="list-style-type: none"> - Issue: The ink may leak from the external ink cartridges. - Possible Causes: Improper installation, damaged cartridges, or a loose connection between the ink tubes.
Color Mismatch	<ul style="list-style-type: none"> - Issue: The colors on the printout do not match the expected colors. - Possible Causes: Incorrect ink placement in the external ink cartridges or a calibration issue with the printer.
Ink Flow Issues	<ul style="list-style-type: none"> - Issue: Uneven or no ink flow into the printer's ink chambers. - Possible Causes: Air bubbles in the ink tubes, clogged nozzles, or improper priming of the external ink cartridges.

4

Problem	Issue & possible causes
Print Quality Problems	<ul style="list-style-type: none"> - Issue: Poor print quality, such as streaks, smudges, or faded prints. - Possible Causes: Clogged print heads, low-quality ink, or insufficient ink levels in the external ink cartridges.
Smart Stirring Malfunction	<ul style="list-style-type: none"> - Issue: The smart, stirring function in the ink cartridges may not work as expected. - Possible Causes: The internal battery is low. Please charge it promptly to ensure proper functioning.

Thank you so much for the purchase!
 Register and get extended warranty

www.offnova.com

5

OFFNOVA

CISS FOR DTF User Guide

