

Note: Handlesets fit doors 1-3/4" to 2" thick.

A

USE INCLUDED DOOR PREPARATION TEMPLATE FOR NON-PREPARED DOORS.

USE INCLUDED PLASTIC TEMPLATE TO LOCATE AND DRILL THE 1/4" BOTTOM GRIP MOUNTING HOLE. (See note on reverse side.)

B

Install deadbolt and handleset latches.

C

Latch tongue note

Bevel side of latch tongue should contact curved end of face plate, and curved end of strike plate.

D

Deadbolt latch tongue note

Deadbolt Tongue must be EXTENDED during installation.

E

Install cylinder into plate

Tailpiece must be VERTICAL during installation.

F

Place cylinder assembly with plate, on door exterior. Attach deadbolt adaptor plate with provided screws.

G

Attach thumbturn assembly with provided screws.

H

Install exterior handleset on door exterior. (part #16)

I

Install rosette/short plate on door inside.

Insert bottom grip mounting screw.

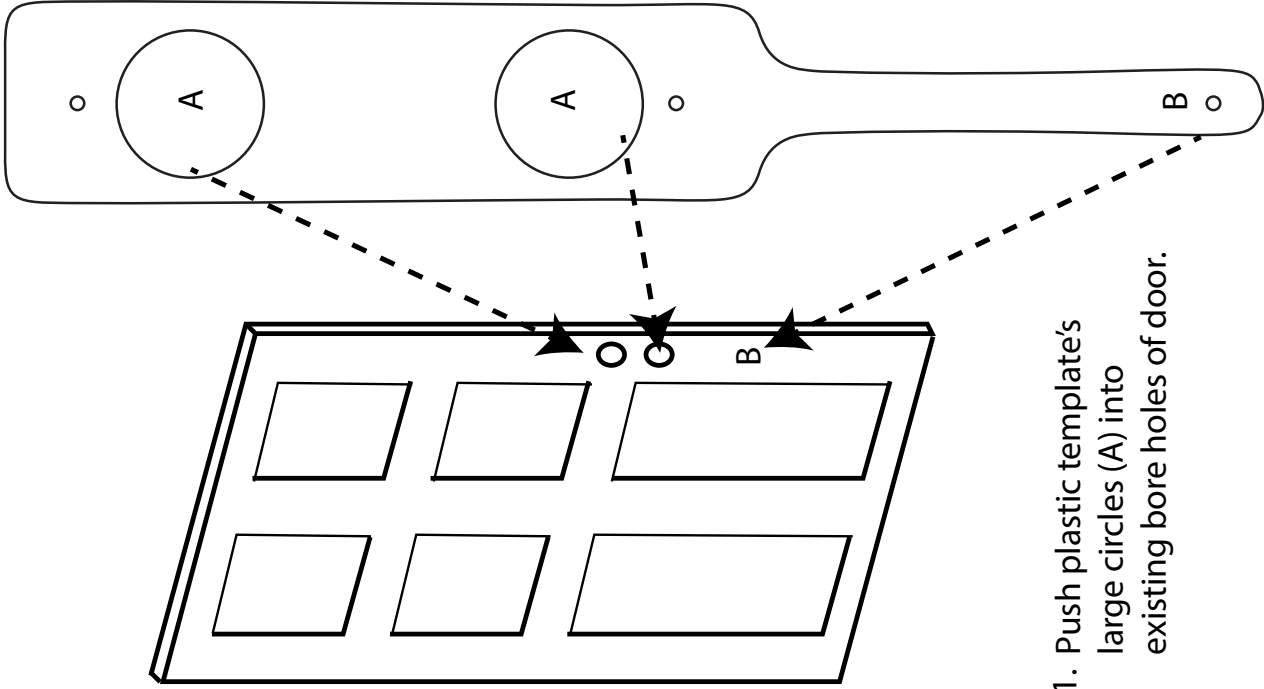
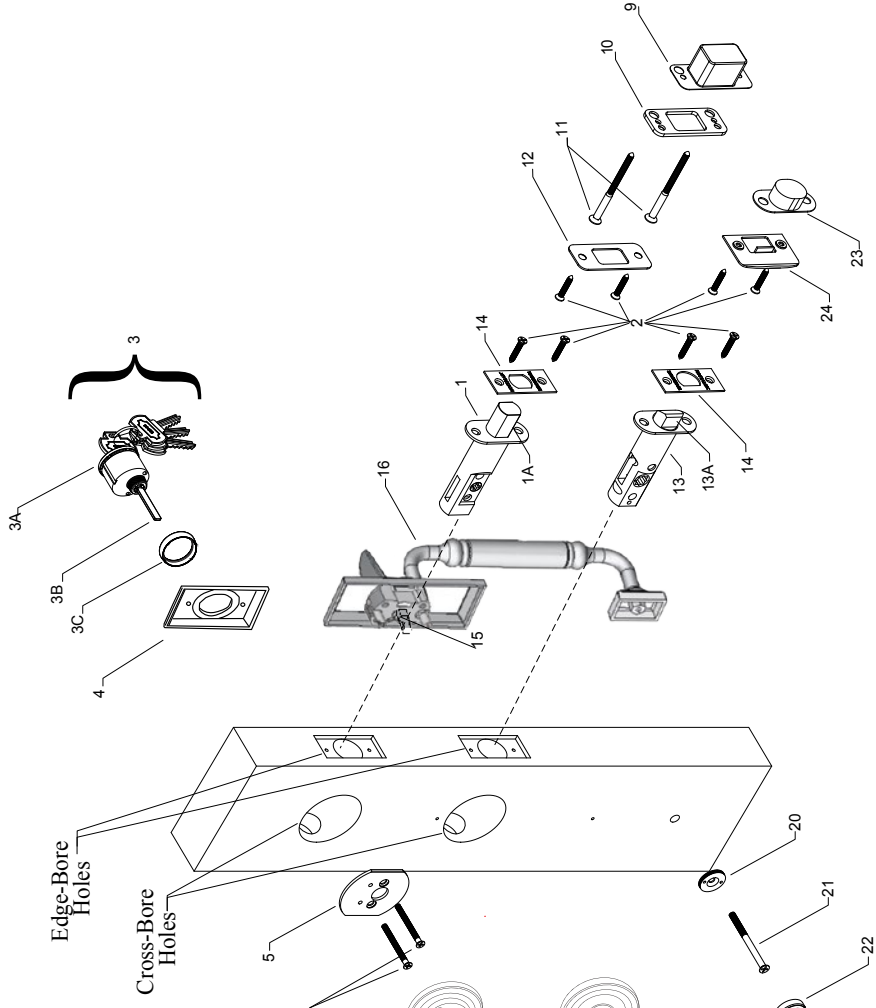
J

Install jamb strike plate.

Exploded Drawing Single Cylinder Handleset— Rosette/Short Plate with Sectional Handleset

**Part
Number Description**

1. Deadbolt Latch
- 1A. Latch Tongue
2. 3/4" Faceplate & Strike Wood Screws (8)
3. Cylinder Assembly (W/Keys)
 - 3A. Cylinder Body
 - 3B. Tailpiece
 - 3C. Spin Ring (Georgetown & Newport do not require spin ring)
4. Deadbolt Plate
5. Deadbolt Adapter Plate
6. 2" Machine Screws (2) for 1-3/4" thick doors. 2-1/4" Machine Screws (2) for 2" thick doors.
7. Thumbturn Assembly
8. 5/8" Thumbturn Machine Screws (2)
9. Dustbox for Deadbolt
10. Door Frame Reinforcer
11. 3" Reinforcer Wood Screws (2)
12. Strike Plate for Deadbolt
13. Handleset Latch
 - 13A. Latch Tongue
14. Latch Faceplate
15. Handleset Spindle
16. Sectional Exterior Handleset
17. Rosette/Short Plate
18. 1-3/4" Machine Mounting Screws
19. Knob
20. Screw Cover Adapter
21. 2-1/2" Bottom Grip Mounting Screw for 1-3/4" thick doors. 2-3/4" for 2" thick doors.
22. Mounting Screw Cover
23. Dustbox for Handleset
24. Strike Plate for Handleset



1. Push plastic template's large circles (A) into existing bore holes of door.

2. Use position of bottom hole (B) to mark and drill 1/4 inch bottom grip mounting hole.