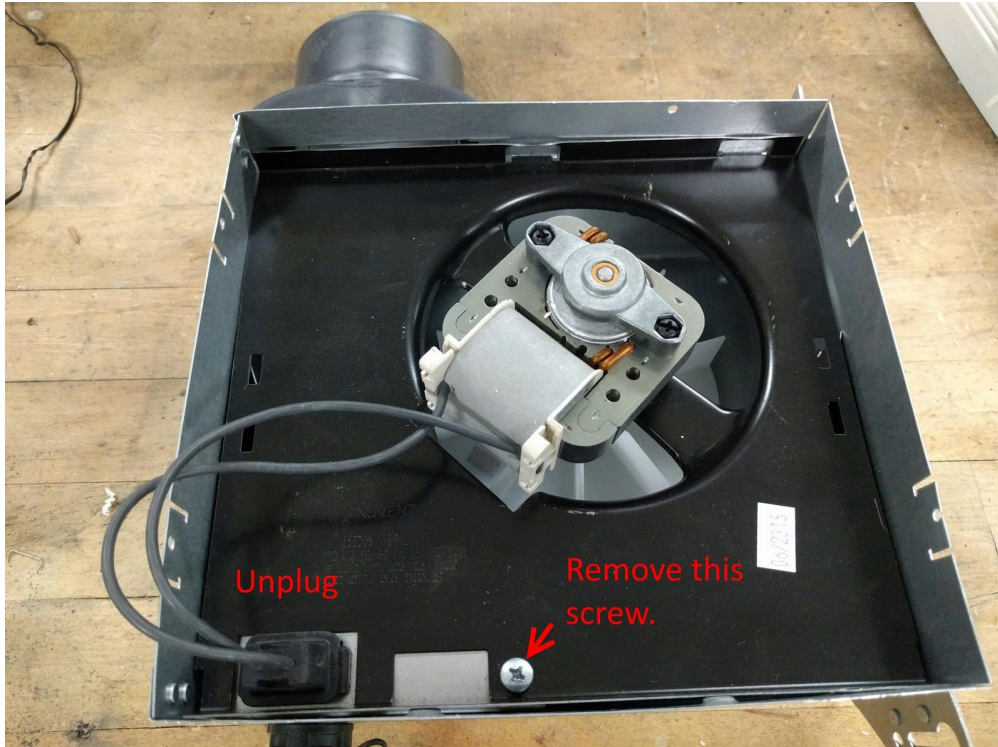
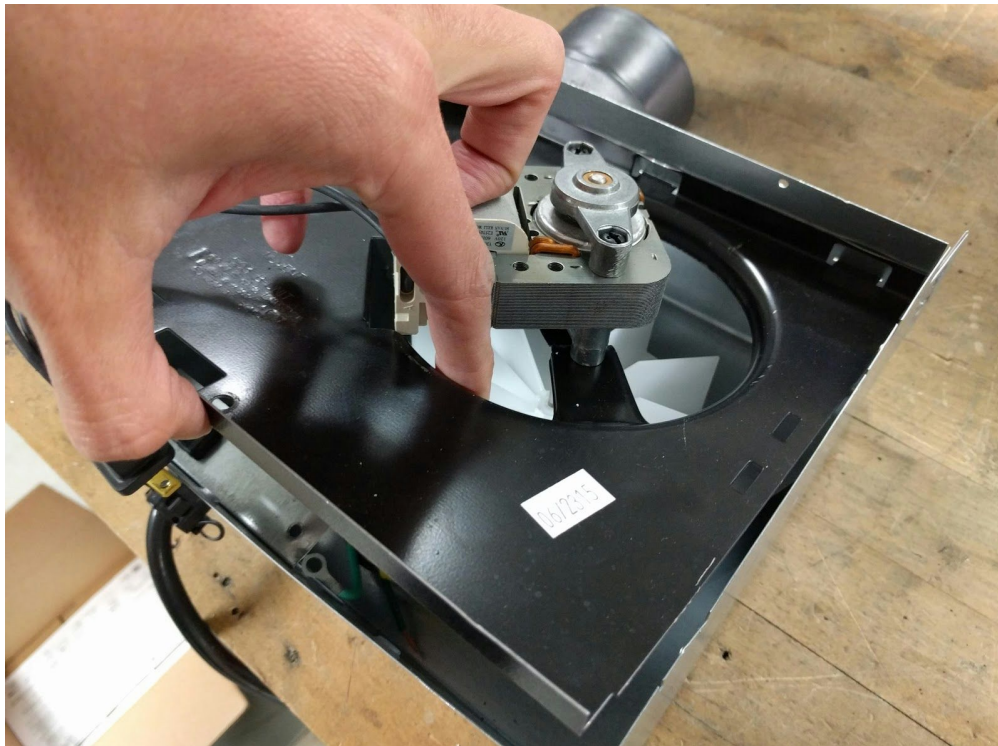


## NX50K/NX70K Replacement Guide

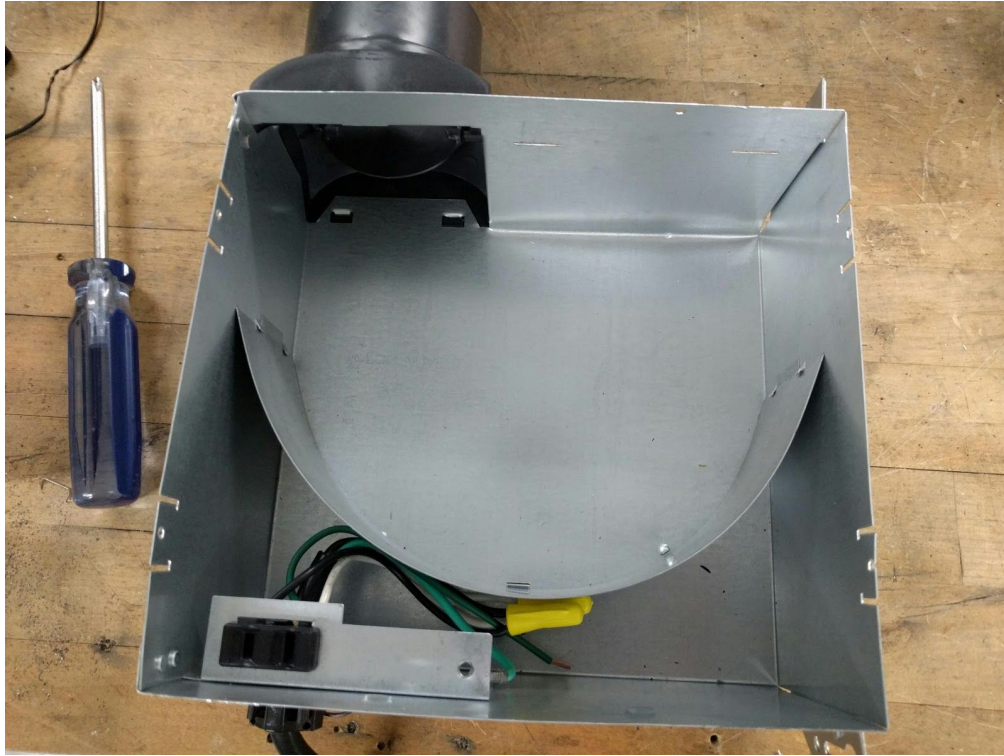
Step 1. Unplug the motor from the receptacle. Remove the Phillips screw that holds the motor plate into the housing.



Step 2. Lift down on the motor plate near where the Phillips screw was removed and slide the plate out.



Step 3. The housing should look similar to the following picture. Note: No wiring needs to be performed to replace the motor kit.



Step 4. When installing the new motor kit, note the tabs on the motor plate and the slots they correspond to in the housing. Also take care not to bend the mounting bracket the motor secures to on the motor plate during installation.

