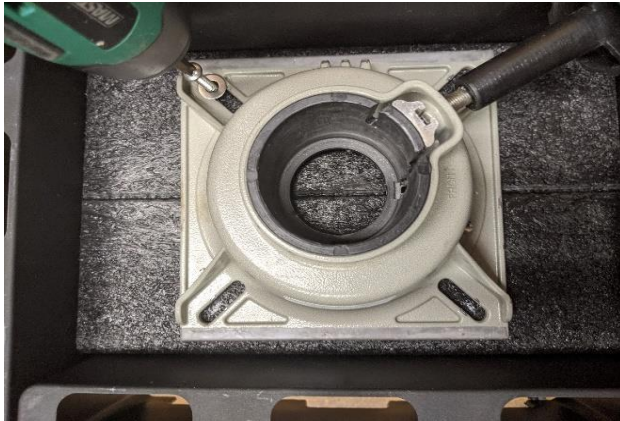




**Thank you for your purchase!  
We really appreciate it!**

## Seat Base Mount Instructions

1. Flip the unit upside down and lay on a flat surface.
2. Align your seat base in the center of the unit.
3. Find the included 1.5" screws and washers in the brown envelope.
4. Place the washer between the seat base and the screw head.
5. Using a #3 Philips bit and an electric drill, drive the screws in.
6. Once the screws seat themselves, **do not** continue tightening.
7. If you wish to remove the seat base from the unit, do not re-use the same holes more than once. You can offset the screw holes by using the length of the channel on the seat base.



**NOTE: If a customer modifies this unit or adds more accessories, they must then remove the screws, drill 1/4" holes where the screw holes were located and bolt the unit to the seat base. This will support the extra added weight.**

**1/4-20 x 2" stainless steel bolts with flat washers and lock washers are recommended.**

8. Place the unit/seat base onto your seat post.
9. Tighten the seat base adjustment knob down snug.
10. Check seat base adjustment knob and seat base fasteners for tightness before each use.

***If your style of seat base has extra appendages such as a the seat release lever examples shown below, you can remove these if they interfere with your installation. The only functionality you need out of your seat base for the purpose of the unit your attaching it to, is the tightening knob. If you do remove these items, the seat base may not work the same if you wish to use it as a seat attachment later. If you do not wish to remove these appendages, you can contact us via the "contact us" page on the website to discuss additional installation options.***



**Good Luck and FISH-ON!**

***Be sure to check out our other new products on the website. We are continually testing new items in the field! Once fisherman approved, the items are added to the website for all to enjoy!***