

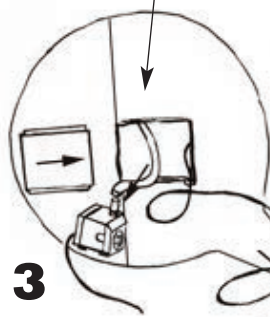
design TOSCANO®

INSTRUCTIONS FOR PRODUCT

Step 1

Connect the flexible hose to the pump. Place pump inside bottom of cavity.

Back Side of Fountain



Step 3

Slide cover on the fountain body.

Step 2

Connect one end of the light cable to the connecting cable. Connect the other end of the light cable to the transformer.

Adjust the pump flow rate to achieve the desired effect and to minimize any splashing. Splashing can occur if the flow rate is too high or the feature water level is too full. The flow rate can be increased or decreased by moving the flow rate control slider on the pump body. Moving the switch towards (+) will increase the flow rate and moving it towards (-) will decrease it.

WARNING:

Never turn on the pump before the fountain is full of water. Also do not let the water level fall below the top of the pump as the pump will become damaged if ran without water. Fountain should be placed on a level surface.

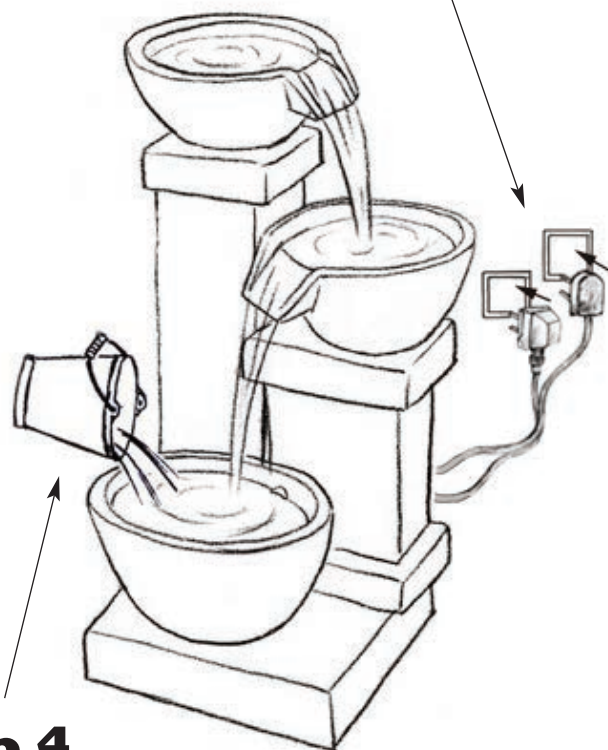
©Copyright 2019, Design Toscano, Inc.

1 . 8 0 0 . 5 2 5 . 0 7 3 3
DESIGNTOSCANO.COM

Thank you for your recent purchase of this Design Toscano hand-crafted garden fountain. We have taken great care to create this piece especially for you. Please review these instructions and assemble this piece with care.

Step 5

Plug in and switch on. After a short while the water will start to flow. Add water as needed.



Step 4

Fill the reservoir with water and take a note of the level that the water reaches for future reference when topping off.

THANK YOU FOR
YOUR PURCHASE