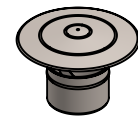
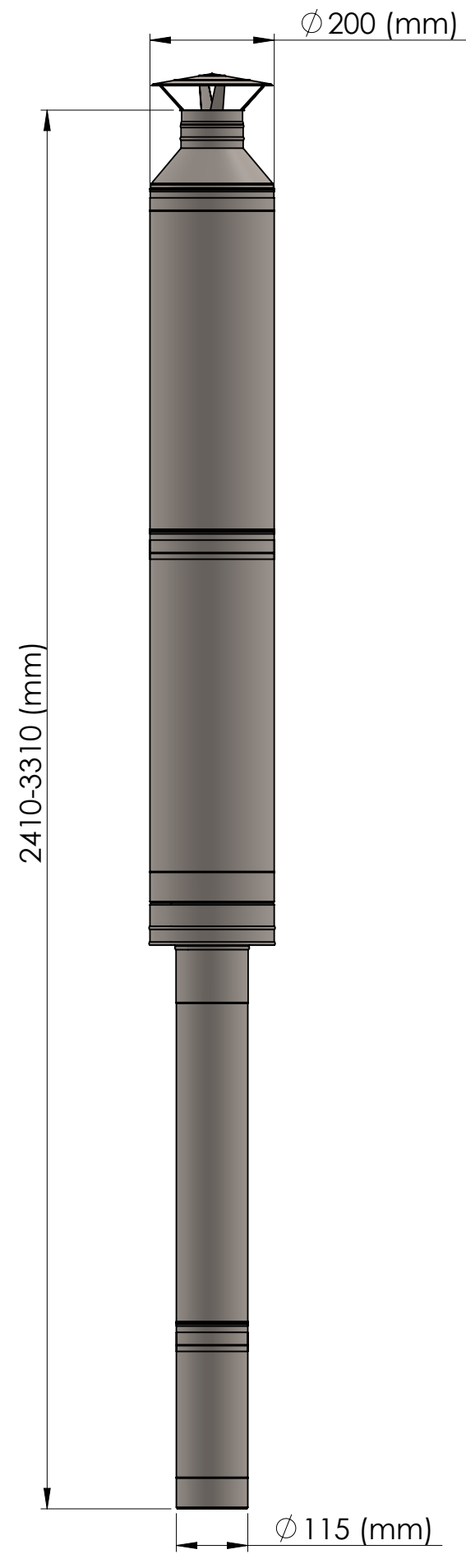


Chimney kits for saunas



- Chimney-stack cover



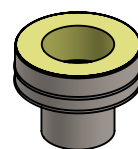
- Top mount tip



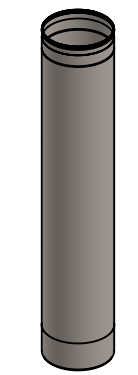
- Rectilinear element of the double-walled chimney (length 700-1000 mm)



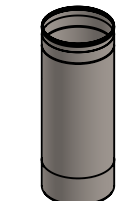
- Rectilinear element of the double-walled chimney (length 700-1000 mm)



- Lower tip

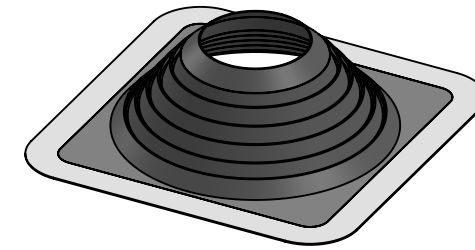


- Rectilinear element for the rigid insert (length 700-1000 mm)

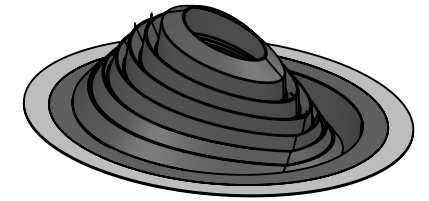


- Rectilinear element for the rigid insert (length 300 mm)

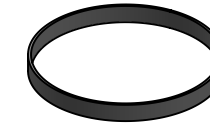
Rubber roof seal



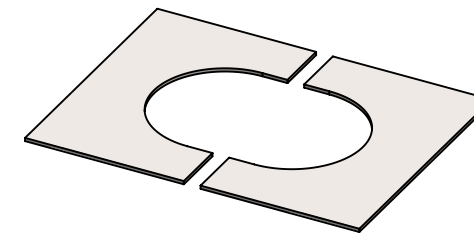
OR



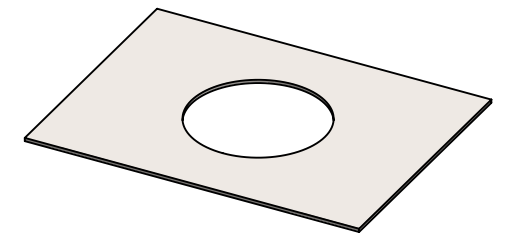
Tightening clamp for the rubber element



Finishing plate



OR



Silicone tube with bolts

