



# INTELLISYNC™

## Monitoring and Control System

### Quick Start Guide



iOS mobile: Scan the bar code or go to the Apple Store to download the Pentair Home app.



Android mobile: Scan the bar code or go to the Google Store to download the Pentair Home app.

#### STEP 1: Download Pentair Home App



Pentair Home is a free app is available for iPhone®, iPad® and iPod touch® mobile digital devices at iTunes® or at Google Play® for all Android™ devices.

**Note: Minimum OS requirements: Apple® (version IOS 11), Android (version 6).**

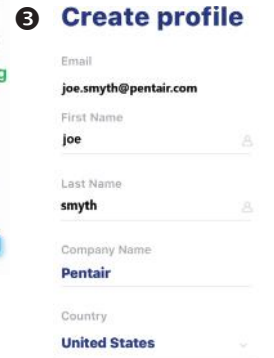
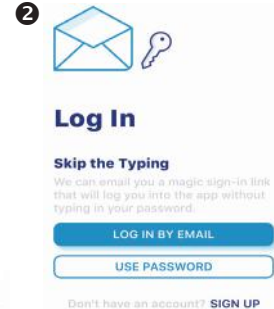
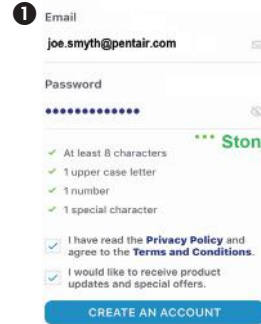
Download the IntelliSync Pentair Home App User's Guide from [www.pentair.com](http://www.pentair.com)

#### STEP 2: Sign Up, Create an Account and Login

1. Open the Pentair Home app icon on your mobile device.
2. From the Login page, tap **Sign Up** to create a new account. If you have already registered: Enter your Email address and password.
3. On the **SIGN UP** page enter your Email address and a strong Password. All Green check marks meets the strong password requirements (! # \$ & ' ( ) \* + comma ? : = ? @ [ ] space are acceptable password special characters).
4. Tap the check box next to "I have read the Privacy Policy and agree to the Terms and Services".
5. Tap **CREATE AN ACCOUNT**. Tap **SEND VERIFICATION** to send a verification Email to your registered Email account. You will receive an Email from **no-reply@verificationemail.com**. Select **Verify Email Address** to confirm your account. A message is displayed indicating your registration has been confirmed. Tap **Login** (top right of screen).

#### STEP 3: Create your Account Profile

1. **CREATE PROFILE:** Enter your name, country, primary address, city, phone number. Add your location on the map shown. Note: If needed, you can enter multiple pool, spa, map locations.
2. **Select STANDARD or METRIC UNITS.** Tap **SAVE** to save your account profile information.
3. From the **ACCOUNT** Dashboard screen. Tap **Add a Device** to add your IntelliSync device. Tap **Home** (lower left icon) to return to the Dashboard.



The Bluetooth® word mark and logos are registered trademarks owned by the Bluetooth SIG, Inc. and any use of such marks by Pentair Management Company is under license. Other trademarks and trade names are those of their respective owners. iPhone®, iPad®, iPod touch®, Apple® App Store® and iTunes® are registered trademark of Apple Inc. in the United States and/or other countries. Google Play® and Android® are registered trademarks of Google LLC in the United States and/or other countries.

## STEP 4: Connecting your Mobile Device to your home network

1. **Dashboard:** After login: Tap **Add a Device** (water drop icon) then tap **IntelliSync** to add this device to your mobile device.
2. **IntelliSync™ unit:** Slide the top cover upward. Press and hold the **MODE** button for 3-seconds until the **CONNECTION LED** is blinking. IntelliSync is ready for *Bluetooth®* wireless technology pairing.
3. **Turn on Bluetooth on your mobile device:** On the **Add a Device** page, tap IntelliSync.
4. Tap **CONTINUE**. **SCANNING...** is displayed. Tap **PNRXXXXXX** (Device ID identifies IntelliSync). Tap **CONTINUE**. IntelliSync (device) is now paired with your mobile device.
5. **Connect to WiFi 2.4 GHz Router:** Tap on the name (SSID) of your home network and enter the password. Tap **CONTINUE** to connect to your home network. **"WiFi Data Sent"** is displayed. Enter your home network password, then tap **CONNECT**. **Installation Completed** displays. Tap **CONTINUE**. The Profile page displays. Tap the location of your pool then tap **SAVE**.
6. Tap **CONTINUE** when **"Installation Completed"** is displayed. The IntelliSync Control and Monitoring System profile and location page is displayed. **IntelliSync:** Select the street Address where your IntelliSync Control and Monitoring System is located. You can also add another location on the displayed map. **MY DEVICES** page displays. Continue to **Add a Device**.

## STEP 5: Add a Device

1. **My Devices:** Tap the **Product Device** name (IntelliSync) to display the **Add Devices** page.
2. **Add Devices:** Tap the device name to connect the selected device (IntelliFlo®, SuperFlo® VS pumps). **Supported Devices (see Installation Guide for complete list):** For one body of water, one IntelliSync supports two pumps (IntelliFlo and SuperFlo VS), and a water and air temperature sensor.

## Dashboard Controls



**Dashboard Home page.**  
Displays installed devices. Tap Home from other pages to return to Dashboard.



**My Devices:**  
Display installed devices. Tap a device to access device settings.



**Weekly event schedules.**



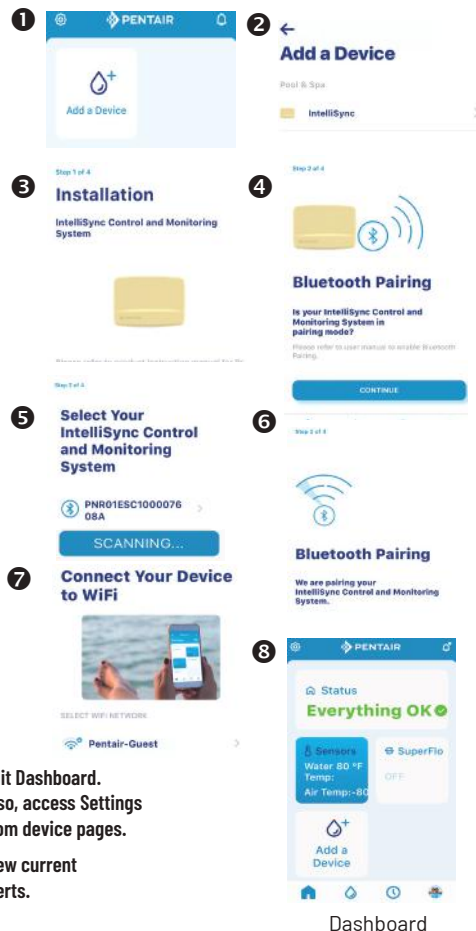
**Account page.**  
Edit Profile, Notifications.



**Edit Dashboard.**  
Also, access Settings from device pages.



**View current Alerts.**



Dashboard

