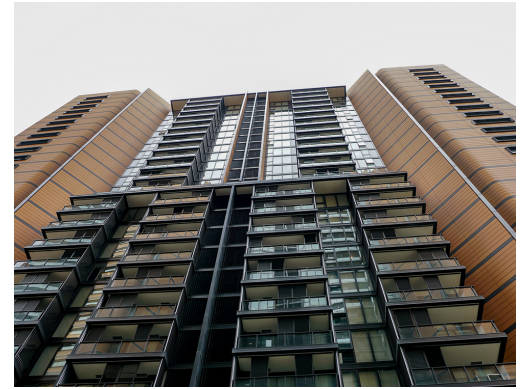




MAGICGLASS

ST LEONARDS OFFICE FIT-OUT

GLAZING DIVISION



LOCATION: 309/480 PACIFIC HWY, ST LEONARDS
DURATION: 3 MONTHS
CLIENT: CRITIQUE PRIVATE CLIENTS, CHAMPION THOROUGHBREDS

Fabrication and installation of aluminium frames, glass doors, and glass office partitions.

The Challenge

This project involved the complete fit-out of an office space located in St Leonards. Magic Glass was contracted to complete all required framing and glazing work for the project.

The Solution

Our team successfully completed all glazing work required for the fit-out. This included the fabrication and installation of aluminium frames, glass doors, and glass office partitions.

The Feedback

"The time frames in which they came in, measured up, delivered, and ensured everything was perfect for us was outstanding." - Jason Abrahams, Director of Critique Private Clients and Champion Thoroughbreds.

Project Points

✓ Delivery Model

All glazing requirements. This involved the fabrication and installation of aluminium frames, glass doors, and glass office partitions.

✓ Project Link

✓ Client

SCAN ME



CHAMPION
THOROUGHBREDS



www.magicglass.com.au