



## About CuraClean Technologies'

**ALL NATURAL INGREDIENTS . HOSPITAL GRADE DISINFECTANT/SANITIZER**  
**For Surfaces and Fogging**



**OUR FUTURES CLEANING SOLUTION!**

## What Can CuraClean Do?

- The active ingredient in CuraClean is hypochlorous acid, which is the same compound used by white blood cells to kill bacteria, viruses and fungi. Essentially, CuraClean is an electrolyzed, oxygenated water. Since it's all-natural, it is considered a truly green product. It's pH-balanced and has various benefits.
- CuraClean can also be used to kill germs. It is destructive to streptococcus, staphylococcus and MRSA, salmonella, e coli, viruses, bacteria, fungus, mold and even anthrax.
- It is said to be 100 times more efficient than bleach (while being a lot safer). And it can even be used for general sanitizing and protecting by being diluted 10:1 with water.

## Why CuraClean Hypochlorous Acid HOCl?

CuraClean Hypochlorous Acid (HOCl) provides 100% all natural Ingredients  
Hypochlorous Acid (HOCL) is a Mid-level Hospital Grade Disinfection Solution For Surfaces and Fogging

It can be used around humans and pets, chemical free, least-toxic and all-natural Class 4 disinfectant least toxic of EPA controlled disinfectant Kills greater than 99.99% Bacteria, fungus, \*viruses on contact

(Including influenza, MRSA, Norovirus, Staph) \* Per Label

Effective Against (the virus that causes COVID-19)

EPA-Registered Disinfectant \*COVID-19 is caused by SARS-CoV-2 virus. CuraClean Disinfectant/Sanitizer kills similar viruses and therefore can be used against SARS-CoV-2 virus when used in accordance with the directions for use against Norovirus and Rhinovirus type 16 on hard, non-porous surfaces. The CuraClean Disinfectant/Sanitizer has been added to the Environmental Protection Agency's (EPA) List N: Disinfectants for Use Against SARS-CoV-2 (COVID-19) under registration Number: 92108-1-88098.



## Appropriate use:

Most Surfaces, walls, windows, floors, fans, doors, knobs, Handles, partitions and lights

Glass, sealed marble, steel, stainless steel, sealed concrete, plastic, PVC, sealed tile, sealed fiberglass, glazed porcelain, glazed ceramic, glazed enameled surfaces,

Urinals, toilets, sinks, facets, bathtubs, showers/stalls and vanities

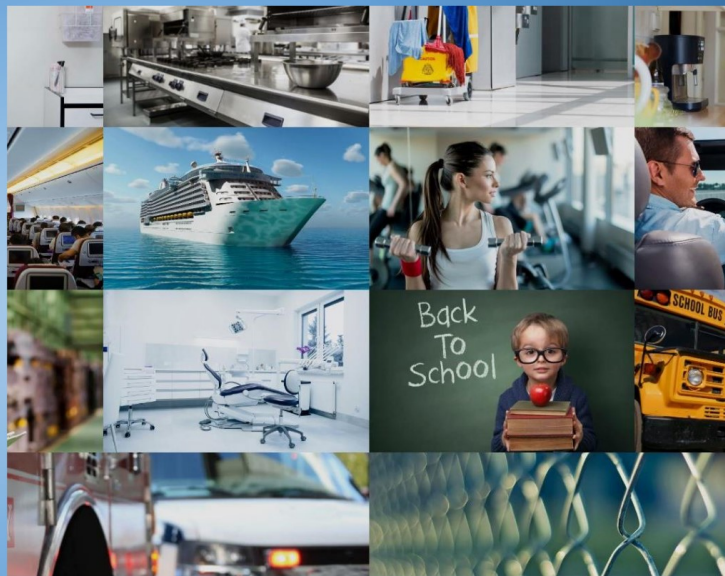
Restaurant/ cafeteria surfaces, tables, chairs, floors, Hostess Stands, telephone, Kitchen sinks, food prep areas (don't forget the cutting boards)!, meat/cheese slicers, drains, floor drains, anti-fatigue mats, walk-in refrigerators and freezer, sinks and faucets, plastic menus

Weight rooms, locker rooms



## Features:

- All natural single step disinfectant and sanitizing solution
- Aids in the reduction of cross-contamination between treated surfaces
- Deodorizes by killing the bacteria that causes odors
- Manufactured in the USA
- With a proprietary patent pending method to stabilize without using chemicals to maintain the product's efficacy.
- EPA registered
- No phosphates, harsh chemicals, and non flammable
- Proven to be 80 to 100 times as powerful as bleach and more reactive than hydrogen peroxide
- No personal protection equipment required
- HOCL does not create antibiotic resistance, making it a best choice for the public.
- Everyday usage and 100% non abrasive



**PATHOGEN**

- Escherichiacoli (E Coli) (ATCC 11229) • Klebsiella Pneumoniae New Delhi Metallo-Beta • Lactamase (NDM-1) Carbapenem Resistant (CRE) • Listeria Monocytogenes (Listeria) (ATCC 7644)
- Methicillin-Resistant Staphylococcus Aureus (MRSA) (ATCC 33591) • Pseudomonas Aeruginosa (Pseudomonas) (ATCC15442) • Salmonella Enterica (Salmonella) (ATCC 10708)
- Staphylococcus Aureus (Staph) (ATCC 6538)
- Vancomycin Resistant Enterococcus Faecalis (VRE) (ATCC 51229) • Mycobacterium Bovis(ATCC VR) Strain Cornell

**BLOODBORNE PATHOGENS**

- [Human] Hepatitis C [Virus] [(as Bovine Diarrhea Virus) [(HCV) [(Strain ADL) [(ATCC VR-1422)]]] 2 minutes
- Human Immunodeficiency (HIV) 10 Minutes

**VIRUSES NON-ENVELOPED**

- Parvovirus Non Enveloped
- Adenovirus
- 1 or Type 2 strain 71 ATCCVR-1
- Norovirus or Norwalk Virus (as Feline
- Calicivirus) (Strain F-9) (ATCC VR-781
- Rhinovirus (16 or Type 16) (Strain 11757) (ATCC VR-283)
- Rotavirus (A or Group A) (Strain WA) (AATCC VR-201Q)

**VIRUSES ENVELOPED**

- Canine Distemper Virus (ATCC VR-1587)
- [(Strain Snyder Hill)]
- Respiratory Syncytial Virus (RSV) (Strain A-2) (ATCC VR-1540)
- Swine Flu Virus (H1N1) A Swine/1976/31 (ATCC VR-99)
- Yeast - Candida Albicans (ATCC 10231)

