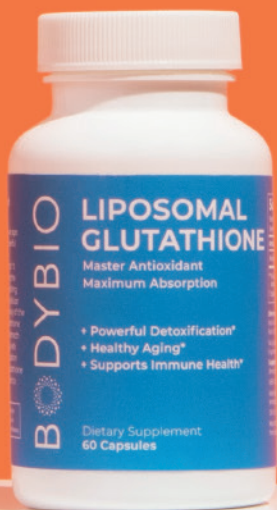


BODYBIO

Nutritional Supplements Product Catalog



NOIS



RESEARCH
BACKED.
QUALITY
DRIVEN.
SINCE 1998.

At BodyBio,

we are committed to developing products that improve the health of the trillions of cells that make up the fabric of human life. Healthy cells, healthy body - that is our mantra.

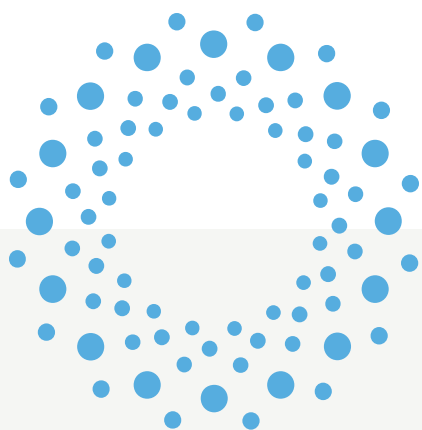
We follow science, not trends. Since 1998 over 2000 healthcare practitioners around the world have entrusted BodyBio and our products to their patients. In 2018, after more than two decades in existence we embarked on a journey to make BodyBio more readily available to people around the world.

The products we make today, and the ones we will make in the future, have been and will always be guided by research conducted at BodyBio, where we reference thousands of pieces of scientific literature to ensure our products are optimized for efficacy and quality. We've raised the bar on quality standards by doing both internal and 3rd-party testing to guarantee that every product we produce meets our strict quality guidelines.

With the help of our global network of practitioners, our in-house researchers, and leadership team, we continue to push boundaries and educate on the importance of human health at the cellular level.

We stand steadfast behind the quality of our products, and believe in the ability of our products to improve lives one cell at a time.

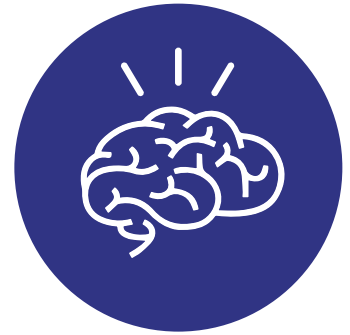
TABLE OF CONTENTS



| | |
|----------------------------------|----|
| Phosphatidylcholine - BodyBio PC | 5 |
| Liquid Trace Minerals | 7 |
| Liquid Mineral Set #1-9 | 7 |
| 1 - Potassium Liquid Mineral | 8 |
| 2 - Zinc Liquid Mineral | 8 |
| 3 - Magnesium Liquid Mineral | 8 |
| 4 - Copper Liquid Mineral | 9 |
| 5 - Chromium Liquid Mineral | 9 |
| 6 - Manganese Liquid Mineral | 9 |
| 7 - Molybdenum Liquid Mineral | 10 |
| 8 - Selenium Liquid Mineral | 10 |
| 9 - Iodine Liquid Mineral | 10 |
| Butyrate (Sodium) | 11 |
| Butyrate (Calcium/Magnesium) | 11 |
| BodyBio Balance Oil | 12 |
| Fish Oil | 13 |
| Evening Primrose Oil | 14 |
| Vitamin B+ | 15 |
| TUDCA | 16 |
| Calm | 16 |
| Magnesium Carbonate | 17 |
| Coenzyme Q10 | 17 |
| E-Lyte Electrolyte Concentrate | 18 |
| Liposomal Vitamin C | 20 |

PHOSPHATIDYLCHOLINE

Our brains are busy non-stop sending messages. Those signals (thoughts) literally dance on the membranes of our nerves. All membranes are made of fat. BodyBio has packaged the phospholipids you need to keep your memory sharp. Your BRAIN can be “good as new” with **BodyBio PC**.

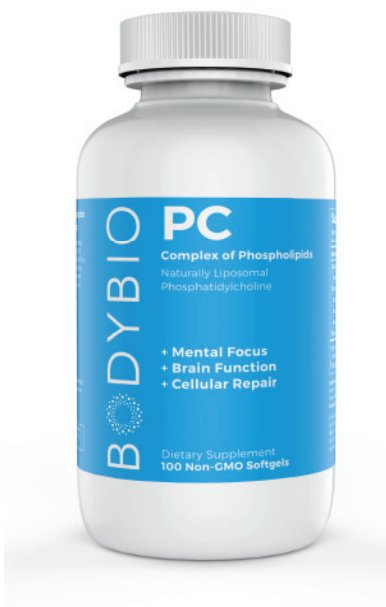


BEWARE OF IMPOSTER PHOSPHATIDYLCHOLINE

When shopping for Phosphatidylcholine, be careful! The terms lecithin and PC are often used interchangeably, and most “phosphatidylcholines” on the market are actually lecithin packed in oil.

However, they are not the same. The phospholipids in the lecithen cannot get to the cell intact because the oils limit absorption to the lipase enzymes.

BodyBio pioneered the “Pure Phospholipid” PC extraction from Soy Lecithin. Unlike lecithin alone, these pure phospholipids automatically form liposomes in the watery environment of the body, providing the maximum benefit to your brain.



BodyBio PC (Phosphatidylcholine - softgels)

Item#: **PC60** (60 softgels) / Item#: **PC100** (100 softgels)
Item#: **PC300** (300 softgels)

BodyBio PC softgels provide cognitive support by enhancing memory, mental alertness, mood and focus. Unlike ordinary PC supplements, BodyBio's highly concentrated PC is naturally liposomal, featuring essential fatty acid ratios of 4:1, as recommended by the medical studies.

SUPPLEMENT FACTS

Serving Size: 2 softgels
Serving Per Container: 30 (60 ct.);
50 (100 ct.); 150 (300 ct.)

| AMOUNT PER SERVING | % DAILY VALUE* | |
|----------------------|----------------|----|
| Calories 14.9 | | |
| Total Fat | 1.6 g | 3% |
| Phospholipid Complex | 1300 mg | † |

* Percent Daily Values are based on a 2000 calorie diet.
† Daily Value Not Established

Ingredients: Proprietary phospholipid complex, minor glycolipids, essential fatty acids, flaxseed oil, ethanol, gelatin, glycerin, and water.

Suggested use: Take 2 softgels daily, with food or as recommended by your HCP.

Allergen Statement: Derived from purified soy lecithin.

Warning: If pregnant or nursing, consult your physician before use. Keep out of reach of children. Do not use if safety seal is broken. Keep closed in a dry place.



BodyBio PC (Phosphatidylcholine - liquid)

Item#: **PC4** (4 oz.) / Item#: **PC8** (8 oz.) / Item#: **PC16** (16 oz.)

BodyBio PC liquid provides cognitive support by enhancing memory, mental alertness, mood and focus. Unlike ordinary PC supplements, BodyBio's highly concentrated PC is naturally liposomal, featuring essential fatty acid ratios of 4:1, as recommended by the medical studies.

SUPPLEMENT FACTS

Serving Size: 1/2 teaspoon
Serving Per Container: 39 (4oz); 79 (8oz.);
158 (16oz)

| AMOUNT PER SERVING | % DAILY VALUE* | |
|----------------------|----------------|----|
| Calories 14.4 | | |
| Total Fat | 1.5 g | 2% |
| Phospholipid Complex | 1300 mg | † |

* Percent Daily Values are based on a 2000 calorie diet.
† Daily Value Not Established

Ingredients: Proprietary phospholipid complex, minor glycolipids, essential fatty acids, flaxseed oil, ethanol.

Suggested Use: Take ½ tsp. daily, with food or as recommended by your HCP

Allergen Statement: Derived from purified soy lecithin

Warning: If pregnant or nursing, consult your physician before use. Keep out of reach of children. Do not use if safety seal is broken. Keep closed in a dry place.

LIQUID MINERALS

WHY SUPPLEMENT WITH LIQUID MINERALS?

Minerals are absolutely essential for our bodies to function in a healthy manner. Taking only the minerals you need is the best way to supplement your diet.

With BodyBio Liquid Minerals, you can test yourself and take only the minerals that your body needs. Our Liquid Minerals are completely customisable and adjustable to your personal supplement needs.

Trace minerals are most easily absorbed by the body in a liquid form. Additionally, BodyBio minerals are ionic and dissolve in water, whereas colloidal minerals are suspended in an aqueous solution and are less absorbable.



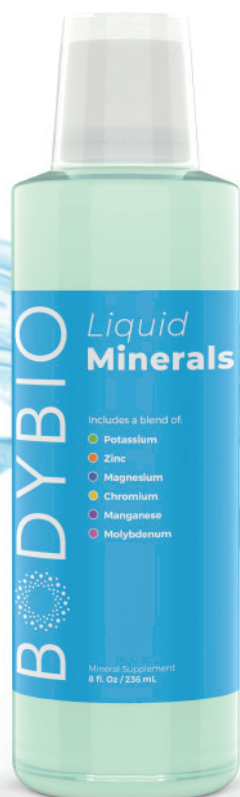
Liquid Minerals Set #1-9

Set of #1-9 (2oz.) Liquid Minerals

Item#: **LM219**

This set contains individual bottles of Potassium, Zinc, Magnesium, Copper, Chromium, Manganese, Molybdenum, Selenium, & Iodine.

*It is recommended that you test yourself periodically as the proper combination is most beneficial to your mineral supplement program.



Liquid Trace Minerals

Item#: **LM800**

This BodyBio exclusive formula contains Potassium, Zinc, Magnesium, Chromium, Manganese, & Molybdenum in one convenient serving.

SUPPLEMENT FACTS

Serving Size: 0.25 oz

Serving Per Container: 32

| AMOUNT PER SERVING | % DAILY VALUE* | |
|--------------------|----------------|-------|
| Potassium | 40 mg | 1% |
| Zinc | 7.8 mg | 71% |
| Magnesium | 25 mg | 6% |
| Chromium | 500 mcg | 1429% |
| Manganese | 1.7 mg | 74% |
| Molybdenum | 75 mcg | 167% |

* Percent Daily Values are based on a 2000 calorie diet.

Shake well, may be refrigerated.

Ingredients: A proprietary blend of purified water, potassium phosphate, zinc sulfate, magnesium chloride, chromium chloride, manganese gluconate, ammonium molybdate, citric acid and potassium iodide as a preservative.

LIQUID MINERALS



2 oz.

1 - Potassium Liquid Mineral

Item#: **LM201** (2 oz.)

Potassium is essential to our bodies for healthy cell function, nerve transmission, & pH balance.

SUPPLEMENT FACTS

Serving Size: 13 drops
Serving Per Container: 60 (2oz)

| AMOUNT PER SERVING | % DAILY VALUE* |
|---------------------------------------|----------------|
| Potassium (As potassium phosphate) | 40 mg 1% |

* Percent Daily Values are based on a 2000 calorie diet.

Suggested use: As a mineral supplement, add 13 drops in water or juice daily, or more as directed by a licensed health care practitioner. Keep out of reach of children. Store in a cool, dry place. Dilute to taste.

Ingredients: Purified water, potassium phosphate, potassium iodide as a preservative.



2 oz.

2 - Zinc Liquid Mineral

Item#: **LM202** (2 oz.)

Zinc is essential to our bodies for enzyme function, immune function, growth, and cell repair.

SUPPLEMENT FACTS

Serving Size: 7 drops
Serving Per Container: 114 (2oz)

| AMOUNT PER SERVING | % DAILY VALUE* |
|---------------------------|----------------|
| Zinc (As zinc sulfate) | 7.8 mg 71% |

* Percent Daily Values are based on a 2000 calorie diet.

Suggested use: As a mineral supplement, add 7 drops in water or juice daily, or more as directed by a licensed health care practitioner. Keep out of reach of children. Store in a cool, dry place. Dilute to taste.

Ingredients: Purified water, zinc sulfate, potassium iodide as a preservative.



2 oz.

3 - Magnesium Liquid Mineral

Item#: **LM203** (2 oz.)

Magnesium is essential to our bodies for enzyme, nerve, and muscle functioning.

SUPPLEMENT FACTS

Serving Size: 10 drops
Serving Per Container: 80 (2oz)

| AMOUNT PER SERVING | % DAILY VALUE* |
|--------------------------------------|----------------|
| Magnesium (As magnesium chloride) | 25 mg 6% |

* Percent Daily Values are based on a 2000 calorie diet.

Suggested use: As a mineral supplement, add 10 drops in water or juice daily, or more as directed by a licensed health care practitioner. Keep out of reach of children. Store in a cool, dry place. Dilute to taste.

Ingredients: Purified water, magnesium chloride, potassium iodide as a preservative.



2 oz.

4 - Copper Liquid Mineral

Item#: **LM204** (2 oz.)

Copper is essential to our bodies for collagen stability, iron absorption, and the prevention of free radical damage.

SUPPLEMENT FACTS

Serving Size: 4 drops
Serving Per Container: 200

| AMOUNT PER SERVING | % DAILY VALUE* | |
|-------------------------------|----------------|-----|
| Copper (As copper sulfate) | 0.5 mg | 56% |

* Percent Daily Values are based on a 2000 calorie diet.

Suggested use: As a mineral supplement, add 4 drops in water or juice daily, or more as directed by a licensed health care practitioner. Keep out of reach of children. Store in a cool, dry place. Dilute to taste.

Ingredients: Purified water, copper sulfate, potassium iodide as a preservative.



2 oz.

5 - Chromium Liquid Mineral

Item#: **LM205** (2 oz.)

Chromium is essential to our bodies for the normal function of insulin and lipid metabolism.

SUPPLEMENT FACTS

Serving Size: 1 drop
Serving Per Container: 798

| AMOUNT PER SERVING | % DAILY VALUE* | |
|------------------------------------|----------------|------|
| Chromium (As chromium chloride) | 100 mcg | 286% |

* Percent Daily Values are based on a 2000 calorie diet.

Suggested use: As a mineral supplement, add 1 drop in water or juice daily, or more as directed by a licensed health care practitioner. Dilute to taste. Keep out of reach of children. Store in a cool, dry place.

Ingredients: Purified water, chromium chloride, potassium iodide as a preservative.



2 oz.

6 - Manganese Liquid Mineral

Item#: **LM206** (2 oz.)

Manganese is essential to our bodies for carbohydrate, bone, and lipid metabolism.

SUPPLEMENT FACTS

Serving Size: 7 drops
Serving Per Container: 114

| AMOUNT PER SERVING | % DAILY VALUE* | |
|---------------------------------------|----------------|-----|
| Manganese (As manganese gluconate) | 1.7 mg | 74% |

* Percent Daily Values are based on a 2000 calorie diet.

Suggested use: As a mineral supplement, add 7 drops in water or juice daily, or more as directed by a licensed health care practitioner. Keep out of reach of children. Store in a cool, dry place. Dilute to taste.

Ingredients: Purified water, manganese gluconate, potassium iodide as a preservative.

LIQUID MINERALS



2 oz.

7 - Molybdenum Liquid Mineral

Item#: **LM207** (2 oz.)

Molybdenum is essential to our bodies for the production of uric acid and overall cardiovascular health.

SUPPLEMENT FACTS

Serving Size: 3 drops
Serving Per Container: 265

| AMOUNT PER SERVING | % DAILY VALUE* | |
|---------------------------------------|----------------|------|
| Molybdenum (As ammonium molybdate) | 75 mcg | 167% |

* Percent Daily Values are based on a 2000 calorie diet.

Suggested use: As a mineral supplement, add 3 drops in water or juice daily, or more as directed by a licensed health care practitioner. Keep out of reach of children. Store in a cool, dry place. Dilute to taste.

Ingredients: Purified water, ammonium molybdate, potassium iodide as a preservative.



2 oz.

8 - Selenium Liquid Mineral

Item#: **LM208** (2 oz.)

Selenium is essential to our bodies for the production of thyroid hormones and antioxidant enzyme function.

SUPPLEMENT FACTS

Serving Size: 3 drops
Serving Per Container: 265

| AMOUNT PER SERVING | % DAILY VALUE* | |
|----------------------------------|----------------|------|
| Selenium (As sodium selenate) | 100 mcg | 182% |

* Percent Daily Values are based on a 2000 calorie diet.

Suggested use: As a mineral supplement, add 3 drops in water or juice daily, or more as directed by a licensed health care practitioner. Keep out of reach of children. Store in a cool, dry place. Dilute to taste.

Ingredients: Purified water, sodium selenate, potassium iodide as a preservative.



2 oz.

9 - Iodine Liquid Mineral

Item#: **LM209** (2 oz.)

Iodine is essential to our bodies for healthy cell function and the production of thyroid hormones.

SUPPLEMENT FACTS

Serving Size: 3 drops
Serving Per Container: 265

| AMOUNT PER SERVING | % DAILY VALUE* | |
|---------------------------------|----------------|------|
| Iodine (As potassium iodide) | 210 mcg | 140% |

* Percent Daily Values are based on a 2000 calorie diet.

SUGGESTED USE: As a mineral supplement, add 3 drops in water or juice daily, or more as directed by a licensed health care practitioner. Keep out of reach of children. Store in a cool, dry place.

INGREDIENTS: Purified water, potassium iodide.

BUTYRATE



Butyrate (Calcium Magnesium)

Item#: **BUCM100** (100 capsules)

Item#: **BUCM250** (250 capsules)

Butyrate is a short chain fatty acid that is a potent detoxifier of ammonia and neurotoxins. Calcium Magnesium Butyrate is designed to meet the needs of most people today who are deficient in Mg and Ca. This is our recommendation for most people.

SUPPLEMENT FACTS

Serving Size: 2 capsules
Serving Per Container: 50 (100 ct.);
125 (250 ct.);

| AMOUNT PER SERVING | % DAILY VALUE* | |
|--------------------|----------------|-----|
| Calories 9.3 | | |
| Total Fat | 1.3 g | 2% |
| Calcium | 160 mg | 16% |
| Magnesium | 80 mg | 20% |
| Butyric Acid | 1.2 g | † |

* Percent Daily Values are based on a 2000 calorie diet.
† Daily Value Not Established

KETO, VEGAN & VEGETARIAN FRIENDLY

Ingredients: Butyric acid, calcium hydroxide, magnesium hydroxide, medium chain triglycerides (MCT), hydroxypropyl methylcellulose and purified water.

Suggested Use: Take 2 capsules daily, with food or as recommended by your HCP

Keep closed in a dry place. Keep out of reach of children. Do not use if safety seal is broken.



Butyrate (Sodium)

Item#: **BUS60** (60 capsules)

Item#: **BUS100** (100 capsules)

Butyrate is a short chain fatty acid that is a potent detoxifier of ammonia and neurotoxins. It encourages the formation of friendly bacteria in the gut. Sodium Butyrate is the perfect combination for those who exercise frequently, work in a hot environments, or have low blood sodium levels.

SUPPLEMENT FACTS

Serving Size: 2 capsules
Serving Per Container: 30 (60 ct.),
50 (100 ct.);

| AMOUNT PER SERVING | % DAILY VALUE* | |
|--------------------|----------------|-----|
| Calories 9.3 | | |
| Total Fat | 1.3 g | 2% |
| Sodium | 313.3 mg | 13% |
| Butyric Acid | 1.2 g | † |

* Percent Daily Values are based on a 2000 calorie diet.
† Daily Value Not Established

KETO, VEGAN & VEGETARIAN FRIENDLY

Ingredients: Butyric acid, sodium hydroxide, medium chain triglycerides (MCT), hydroxypropyl methylcellulose and purified water.

Suggested Use: Take 2 capsules daily, with food or as recommended by your HCP.

Keep closed in a dry place. Keep out of reach of children. Do not use if safety seal is broken.

BALANCE OIL



BodyBio Balance Oil

Item#: **BO16** (16 oz. liquid)

Item#: **BO60** (60 softgels)

Item#: **BO180** (180 softgels)

BodyBio Balance Oil is the perfect blend of the essential fatty acids, omega-6, and omega-3 to give the brain a boost, improve digestive health, support immunity, liver function, and cardiovascular activity.*

In general, we consume too much omega-6 in our diets, and not enough omega-3, but, the truth is, we need both linoleic acid and linolenic acid for optimal health and for the development of our body's inflammatory response. Creating a balanced ratio, and ensuring the oils remain in their pure state is key.

Why BodyBio Balance Oil?

Most oils are heated and processed, rendering them toxic and inflammatory. We use low temperature, expeller-pressed technology to protect the delicate alpha-linolenic acid (organic flaxseed) and linoleic acid (organic, unrefined safflower). This process guarantees the highest quality nutrients can be easily absorbed in the body. These essential nutrients play critical roles in multiple biological processes, including regulating the structure and function of cell membranes, intracellular signaling, and gene expression.*

SUPPLEMENT FACTS

Serving Size: 1/2 Teaspoon
Serving Per Container: 182

| AMOUNT PER SERVING | % DAILY VALUE* | |
|--------------------|----------------|----|
| Calories 20 | | |
| Total Fat | 2.3 g | 4% |
| Linoleic Acid | 1400 mg | † |
| Linolenic Acid | 350 mg | † |

* Percent Daily Values are based on a 2000 calorie diet.
† Daily Value Not Established

Ingredients: Organic unrefined safflower seed oil, organic flax seed oil.

Shake well. Do not heat and refrigerate after opening. Can be frozen to extend life. Should be consumed within 12 weeks of opening. Do not use if safety seal is broken.

SUPPLEMENT FACTS

Serving Size: 2 softgels
Serving Per Container: 30 (60 ct.),
90 (180 ct.);

| AMOUNT PER SERVING | % DAILY VALUE* | |
|---------------------|----------------|----|
| Calories 24 | | |
| Total Fat | 2.6 g | 4% |
| Linoleic (Omega 6) | 1400 mg | † |
| Linolenic (Omega 3) | 350 mg | † |

* Percent Daily Values are based on a 2000 calorie diet.
† Daily Value Not Established

Ingredients: Safflower oil, flaxseed oil, gelatin, glycerin, and water.

Suggested use: Take 2 softgels daily, with food or as recommended by your HCP.

Keep closed in a dry place. Keep out of reach of children. Do not use if safety seal is broken.



FISH OIL



Fish Oil

Item#: **KR120** (120 softgels)

Our Fish Oil is produced using Supercritical Fluid Extraction (SFE), a process utilizing carbon dioxide (CO₂) to fine tune temperature and pressure while extracting the delicate polyunsaturated oil from fish. SFE prevents the degradation of fish oil by heat and oxygen, ensuring the highest quality and Concentration of EPA and DHA in each 500mg softgel.

SUPPLEMENT FACTS

Serving Size: 1 softgel
Serving Per Container: 120

| AMOUNT PER SERVING | % DAILY VALUE* |
|-----------------------------|----------------|
| EPA (eicosapentaenoic acid) | 315 mg † |
| DHA (docosahexaenoic acid) | 105 mg † |

* Percent Daily Values are based on a 2000 calorie diet.
† Daily Value Not Established

INGREDIENTS: Fish oil, gelatin, glycerin, water, and mixed tocopherols.

KEEP OUT OF REACH OF CHILDREN.

Contains: Small bodied fish (anchovies and sardines).

Keep tightly closed in a dry place at room temperature (59 - 86°F).

DO NOT USE IF SAFETY SEAL IS BROKEN.

Manufactured Using Dr. David Horrobin's Research Formulation of High EPA Fish Oil Provides three times more EPA (315 mg) than DHA (105 mg) from specially selected fish oils. Mercury Free - No PCB or Dioxins

DR. DAVID HORROBIN'S SCIENTIFIC LEGACY

David Horrobin was one of the most productive clinical scientists of his generation, a highly successful businessman, and an inspirational figure in the world of medicine. As a brilliant Oxford student, David achieved a scholarship to Balliol, a prize fellowship and top physiology degree where he read medicine. He did his clinical studies at St. Mary's Hospital in London. An unconventional career move followed an offer to a chair in physiology at Nairobi Medical School, Kenya. He later became professor of medicine at the University of Montreal. While at Oxford he became close to the nutritionist Hugh Sinclair, who felt that dietary essential fatty acids had a major role to play in health and disease. When prostaglandins became the focus of widespread research interest, Horrobin realized that they were synthesized from an essential fatty acid, gamma linolenic acid (GLA). His work in omega 6 fatty acids followed and is widely recognized.

Dr. Horrobin personally supervised the formulation of our Fish Oil (formerly known as Kirunal). His life long interest in brain disorders led him to the application of EPA at a higher dose for those disorders. One of the most interesting showed an improvement of schizophrenia at 2 grams per day and a reverse of benefits at 4 grams. The size of the capsule and the 3:1 ratio were significant in his studies. Supplementing with Fish oil can be a remarkable nutritional asset. Kirunal is a more intelligent approach to achieve the control you desire.

EVENING PRIMROSE OIL



Evening Primrose Oil (liquid)

Item#: **EPO8** (8 fl. oz.)

BodyBio Evening Primrose Oil contains several Essential Fatty Acids, including Gamma Linolenic Acid (GLA). Our Evening Primrose Oil contains approximately 9-10% GLA, which many people (especially those over the age of 30) do not produce. Evening Primrose Oil supports your immune system, skin, and emotional wellbeing.

SUPPLEMENT FACTS

Serving Size: 1/2 teaspoon (5 mL)
Serving Per Container: 96

| AMOUNT PER SERVING | % DAILY VALUE* | |
|----------------------------|----------------|----|
| Calories 20 | | |
| Total Fat | 2.5 g | 4% |
| Gamma Linolenic Acid [GLA] | | |
| Omega 6 | 250 mg | † |
| Linoleic Acid Omega 6 | 1743 mg | † |

* Percent Daily Values are based on a 2000 calorie diet.
† Daily Value Not Established

Ingredients: Evening Primrose Seed oil.

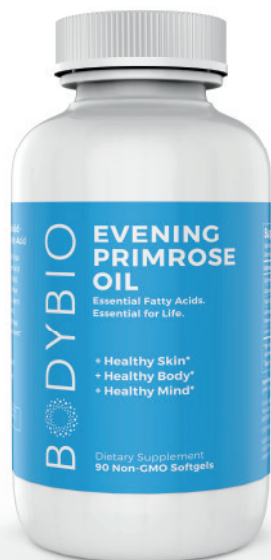
Suggested use: Take one teaspoon daily after a meal or as recommended by your HCP.

If you are pregnant or nursing, seek the advice of a health professional before using this product.

Cold-Pressed, Hexane Free.

Keep closed in a dry place. Keep out of reach of children. Do not use if safety seal is broken.

Should be consumed within 12 weeks after opening.



Item#: **EPO180** (180 softgels)

BodyBio Evening Primrose Oil contains several Essential Fatty Acids, such as Gamma Linolenic Acid (GLA). Our Evening Primrose Oil contains approximately 9-10% GLA, which many people (especially those over the age of 30) do not produce. Evening Primrose Oil supports your immune system, skin, and emotional wellbeing.

SUPPLEMENT FACTS

Serving Size: 1 softgel
Serving Per Container: 180 (180 ct.)

| AMOUNT PER SERVING | % DAILY VALUE* | |
|----------------------------|----------------|----|
| Calories 10 | | |
| Total Fat | 1.5 g | 2% |
| Gamma Linolenic Acid [GLA] | | |
| Omega 6 | 130 mg | † |
| Linoleic Acid Omega 6 | 950 mg | † |

* Percent Daily Values are based on a 2000 calorie diet.
† Daily Value Not Established

Ingredients: Evening Primrose Seed oil, gelatin, glycerin, and water.

Suggested use: One softgel daily, with food or as recommended by your HCP

If you are pregnant or nursing, seek the advice of a health professional before using this product.

Cold-Pressed, Hexane Free.

Keep closed in a dry place. Keep out of reach of children. Do not use if safety seal is broken.

VITAMIN B



Vitamin B+

Item#: **BVH90** (90 capsules)

BodyBio's B Vitamin compound contains a group of nine essential B Vitamins that work closely together to support metabolic function, muscle tone, immune system, energy levels, and nervous system. Our formula contains B1, B2, B3, B5, B6, Methyl B12, Folinic acid, 5-MTHF, and B7, as well as Inositol, PABA, and Pantethine.

SUPPLEMENT FACTS

Serving Size: 1 capsule
Serving Per Container: 90 (90 ct.)

| AMOUNT PER SERVING | % DAILY VALUE* | |
|-------------------------|----------------|--------|
| Vitamin B1 | 84 mg | 7,000 |
| Vitamin B2 | 67 mg | 5,154 |
| Niacinamide | 84 mg | 525 |
| Pantothenic Acid | 84 mg | 1,680 |
| Vitamin B6 | 42 mg | 2,471 |
| Inositol | 84 mg | † |
| Biotin | 4 mg | 13,333 |
| Para-Amino benzoic Acid | 84 mg | † |
| Pantethine | 10 mg | † |
| Folinic Acid | 400 mcg | 100 |
| Vitamin B12 | 250 mcg | 10,417 |

* Percent Daily Values are based on a 2000 calorie diet.
† Daily Value Not Established

Ingredients: Thiamine HCL, Riboflavin, Niacin, Calcium D-Pantothenate, Pyridoxine HCL, Pantethine HF55, Calcium Folate, Methylcobalamin, dicalcium phosphate anhydrous, magnesium stearate, silica, and gelatin.

OTHER SUPPLEMENTS



TUDCA

Item#: **TU60** (60 capsules)

TUDCA is a bile acid naturally formed in the body that supports the digestion and utilization of fats and oils and demonstrates neuroprotective benefits*.

TUDCA supports digestive ability by supporting healthy fat metabolism and breakdown as well as proper nutrient absorption. It is also supportive to cellular and mitochondrial health.

SUPPLEMENT FACTS

Serving Size: 2 capsules
Serving Per Container: 30

| AMOUNT PER SERVING | % DAILY VALUE* |
|---------------------------|----------------|
| Tauroursodeoxycholic Acid | 500 mg † |

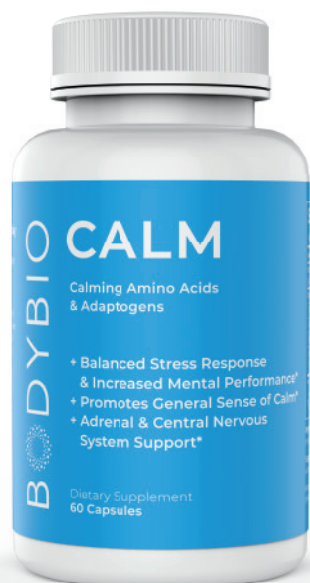
* Percent Daily Values are based on a 2000 calorie diet.

† Daily Value (DV) Not Established

Other Ingredients: Gelatin (capsules), rice flour

Suggested use: 2 capsules per day with food or as recommended by your HCP.

Keep closed in a dry place. Keep out of reach of children.
Do not use if safety seal is broken.



Calm

Item#: **CALM60**
(60 capsules)

Stress is a fire starter that disrupts all the core bodily functions. Research has linked states of prolonged stress to depression, gut distress, inflammation, low energy, and general immune suppression.

BodyBio Calm is a unique botanical blend that manages the body's stress response, to help create a general feeling of calm and focus — no matter what life throws at you.

SUPPLEMENT FACTS

Serving Size: 1 capsule

| AMOUNT PER SERVING | % DAILY VALUE* |
|---|----------------|
| Manganese (as gluconate and citrate) | 2.5 mg 109% |
| Proprietary Blend | 425 mg |
| Taurine | 250 mg † |
| Glycine | 100 mg † |
| Rhodiola rosea root extract | 50 mg † |
| Soy-Free Phosphatidylserine (Sharp PS® Green) | 25 mg † |

* Percent Daily Values are based on a 2000 calorie diet.

† Daily Value (DV) Not Established

Other Ingredients: Capsule shell (gelatin and water), medium chain triglycerides and silica.

Suggested use: 1 capsule up to 3 times a day with or without food. Or as directed by your HCP.

Keep closed in a dry place. Keep out of reach of children.
Do not use if safety seal is broken.



Magnesium Carbonate

Item#: **MC100** (100 tablets)

BodyBio's Magnesium Carbonate aids muscle relaxation, blood clotting, and the synthesis of ATP, which supplies the body's energy. Magnesium also plays a critical role in over 300 metabolic and enzyme reactions that occur regularly in the body. Since it is interlaced with calcium, Magnesium acts as a natural calcium channel blocker.

SUPPLEMENT FACTS

Serving Size: 1 tablet
Serving Per Container: 100

| AMOUNT PER SERVING | % DAILY VALUE* |
|---|----------------|
| Magnesium (from Magnesium Carbonate) | 135 mg 33% |

* Percent Daily Values are based on a 2000 calorie diet.

No artificial color, no sugar, no preservatives.

INGREDIENTS: Cellulose, stearic acid, potassium phosphate, dicalcium phosphate, silica, sodium bicarbonate, and potassium bicarbonate.

KEEP OUT OF REACH OF CHILDREN.

Keep tightly closed in a dry place at room temperature (59 - 86°F).



Coenzyme Q10

Item#: **CQ60** (60 softgels)

Aging, stress, and the use of Statins for cholesterol reduce the body's levels of CoQ10. The restoration of CoQ10 levels promotes a stronger, healthier heart by offering support for already healthy triglyceride levels, arterial health, and heart rhythm.

SUPPLEMENT FACTS

Serving Size: 1 softgel
Serving Per Container: 60 (60 ct.),
200 (200 ct.)

| AMOUNT PER SERVING | % DAILY VALUE* |
|--|----------------|
| Coenzyme Q-10 Q-Gel® (Hydrosoluble™) (in a proprietary Bio-Solv® base specially formulated to enhance absorption) | 100 mg † |

* Percent Daily Values are based on a 2000 calorie diet.

† Daily Value Not Established

INGREDIENTS: Medium chain triglycerides, bone gelatin (bovine), glycerin, purified water, beeswax (yellow), lecithin (soy) and annatto suspension in sunflower oil.

Contains: Soy

KEEP OUT OF REACH OF CHILDREN.

Keep tightly closed in a dry place at room temperature (59 - 86°F).

DO NOT USE IF SAFETY SEAL IS BROKEN.

Q-Gel® and Bio-Solv® are registered trademarks of Tishcon Corp.

ELECTROLYTE CONCENTRATE



E-Lyte

Item#: **EC16** (16 fl. oz. bottle)

Item #: **EC4** (4 fl. oz. bottle)

E-lyte Balanced Electrolyte Concentrate is a dietary supplement that cleans and replenishes the blood by balancing the essential electrolytes, which is vital.

Electrolytes drive all muscle function from the blinking of an eye to the wiggling of a finger.

It can replace electrolytes lost as a result of: stress, poor diet, exercise, illness, medications, toxic exposure, etc.

SUPPLEMENT FACTS

Serving Size: 1 capful
Serving Per Container: 16 (4oz); 64 (16oz.);

| AMOUNT PER SERVING | % DAILY VALUE* | |
|--------------------|----------------|-----|
| Sodium (Na) | 89 mg | 4% |
| Potassium | 187 mg | 6% |
| Magnesium | 65 mg | 17% |

* Percent Daily Values are based on a 2000 calorie diet.

Ingredients: A proprietary blend of purified water, potassium, phosphate, sodium, chloride, magnesium, bicarbonate, sulfate, and potassium iodide as a preservative.

Suggested Use: Mix 1 capful (1/2 tbsp.) in 8 oz of water. Can be further diluted to desired taste.

Drink 1-2 servings per day or as directed by your physician for optimal hydration. When engaging in strenuous activity, use prior to help maintain healthy electrolyte levels in the body for improved performance and fewer muscle cramps. E-Lyte can also help to relieve night muscle cramps.

Recommended by physicians and safe for children.

Store in a cool, dry place. When exposed to heat, product may crystallize, but it is still effective and safe for consumption.

SEE WHAT OUR CUSTOMERS ARE SAYING.....

I started using E-Lyte about two months ago. I was having terrible upper leg cramps at night if I even slightly over-exerted during exercise. While I know that my age is playing a role, I don't believe that I should be experiencing these types of cramps so often. It was very discouraging. Then when I saw the ad for E-Lyte, I thought "why not?" I can't believe the difference. I have had only one cramp since starting E-Lyte and I think that happened because I forgot a dose on the day of the exercise in question. I am very pleased with E-Lyte and would recommend it to everyone!!!

Kathleen D.
New Jersey, USA

For the last 12 months or so I have been having problems with my legs. At night I would have bad leg cramps. So finally I went to, not one but two doctors. They both said everything was fine. In the waiting room of the second doctors office was a bike magazine. On the last page I saw your product and ordered it. All I know is that today I can sleep because I am not having legs cramps.

Thanks,

Mike H.
Texas, USA

E-LYTE

electrolyte concentrate

a liquid concentrate formulated
to mimic the electrolyte levels
in your body

REPLACING ELECTROLYTES FROM:



Sports



Pregnancy

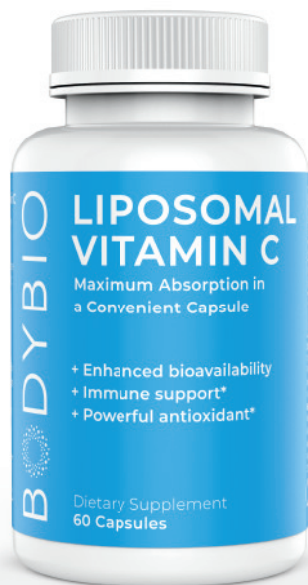


Illness



No sugars, no artificial sweeteners,
just pure, salty electrolytes in a 16:1 ratio –
the highest concentration available.

OTHER SUPPLEMENTS



Liposomal Vitamin C

Item#: **LVC60**

(60 capsules)

Our pure, non-GMO Vitamin C delivered in a liposomal form — ensuring maximum absorption for powerful immune and antioxidant support*.

SUPPLEMENT FACTS

Serving Size: 2 Capsules
Serving Per Container: 30

| AMOUNT PER SERVING | % DAILY VALUE* |
|--|-----------------|
| Vitamin C (as Quali®-C Ascorbic Acid) | 1,000 mg 1,111% |

* Percent Daily Values are based on a 2000 calorie diet.

† Daily Value (DV) Not Established

Suggested use: 2 capsules a day or as directed by your Healthcare Practitioner. Keep out of reach of children. Store in a cool, dry place.

Ingredients: Proprietary lipid blend (Non-GMO Sunflower Oil and Sustainable Palm Oil), Vegetarian capsule (Cellulose) No gluten, dairy, soy, or GMO-containing ingredients.



Liposomal Glutathione

Item#: **LG60**

(60 capsules)

Levels of glutathione decrease as we age, glutathione is the body's most powerful antioxidant protecting us from environmental toxins and pollutants.* While most glutathione supplements break down in the stomach and can't be absorbed in the body, with our proprietary liposomal encapsulation technology, you get maximum glutathione absorption allowing this key nutrient to work for you on a cellular level.

SUPPLEMENT FACTS

Serving Size: 1 Capsule
Serving Per Container: 60

| AMOUNT PER SERVING | % DAILY VALUE* |
|-----------------------|----------------|
| Reduced L-Glutathione | 250 mg † |

* Percent Daily Values are based on a 2000 calorie diet.

† Daily Value (DV) Not Established

Suggested use: 1 capsule a day or as directed by your Healthcare Practitioner. Keep out of reach of children. Store in a cool, dry place.

Ingredients: Proprietary blend (Non-GMO Sunflower Oil and Sustainable Palm Oil), Vegetarian capsule (Cellulose) No gluten, dairy, soy, or GMO-containing ingredients.

Manufactured in the USA using ingredients from Japan, Europe, and USA.

Immunity Essentials

Liquid Zinc Trace Minerals

Better bioavailability in a liquid form
for maximum absorption

Vitamin C Crystals

Pure ascorbic acid
from Scotland



How to make your liposomal immunity shot

Blend together until all the PC is dissolved. Mixture should be maple brown in color with a gel-like consistency. **Drink immediately!**



Zinc



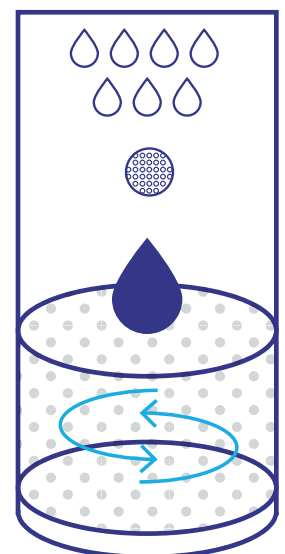
Vit C
crystals



PC
liquid



H2O

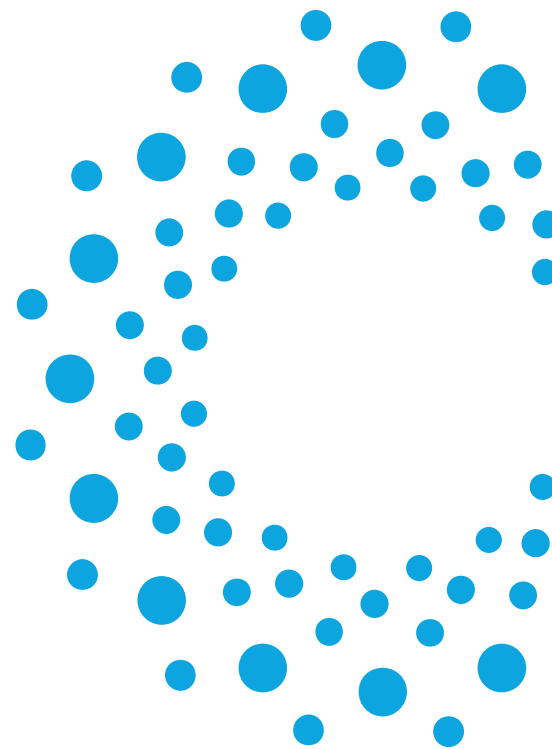


The tools you need to build a Healthier You.

Get **one month free** when you subscribe.

Foundational nutrients are daily essentials you need to support mind and body.

To learn more, visit www.bodybio.com/foundational



Balance Oil

The Most Essential Building Blocks for cellular Health designed to optimize and protect your brain and body.



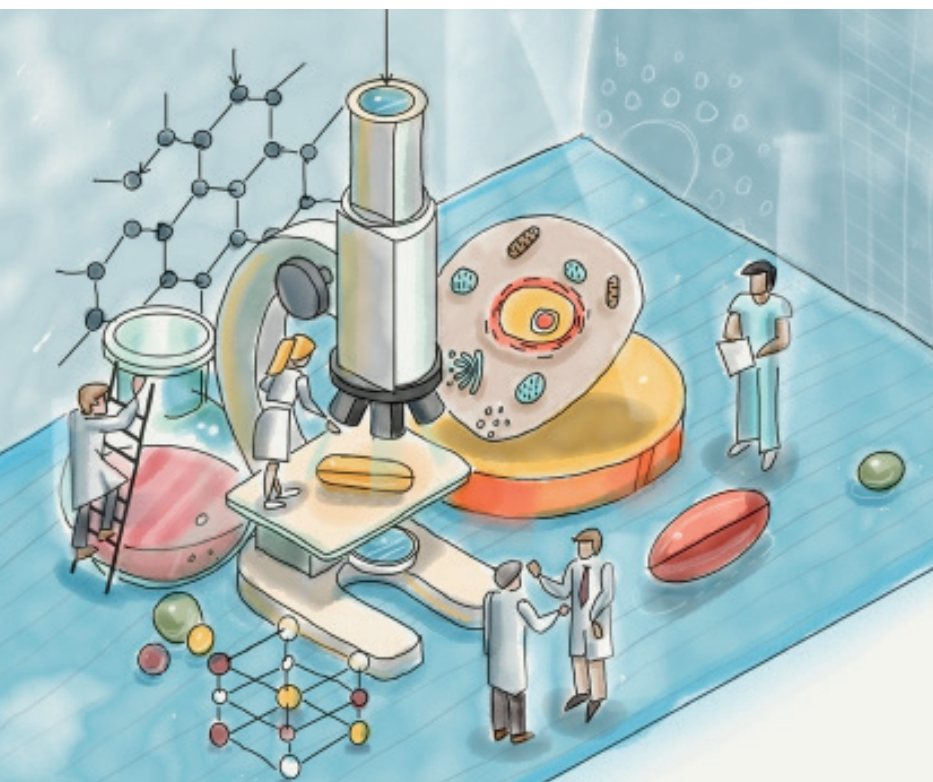
BodyBio PC

Not a vitamin, but the ultimate nootropic. This phospholipid is designed to support your brain, mind, mood, and cognition.



Butyrate

The nutrient that good bacterium needs to help your microbiome thrive.



Optimizing Cellular Health

Nutrients To Support Immunity, Brain, & Body Function

The result of over 25 years of research, our supplements are developed with proven methodology – clear the toxins your body doesn't need, replenish the lipids it does and rejuvenate with phospholipids. Created to encourage cellular health and promote a stronger ecosystem, foundational builds a healthier you, starting at the base level — **it's only up from here.**



We are BodyBio.

We're dedicated to the relentless pursuit of science and research around cellular health.

We've been around for over 20 years. You may not know us, but customers and practitioners from around the world love us. When you buy our products, you can rest assured that you are getting the best quality of each and every ingredient listed on the bottle -- nothing more, nothing less.

Our first priority is to your health, and we ensure each and every vitamin and supplement we make is guaranteed for quality and safety.

Health at the Cellular Level. That is at the core of what BodyBio aspires to understand and provide. We develop products that ensure that each of the trillions of cells in your body work in harmony. And we do it all with a trusted team of experts: scientists, doctors, and research partners with decades of experience in health and wellness.

We are BodyBio. Bound by our dedication to improve all lives. Committed to creating exceptional products. Dedicated to the relentless pursuit of science and research around cellular health.

Visit bodybio.com to learn more about our commitment to your health and well-being.

Thank You.

Ed Kane

Founder - BodyBio

BODYBIO

BODYBIO

Health at the Cellular Level



BodyBio, Inc.
45 Reese Road
Millville, NJ 08332

Ph: 888.320.8338 (toll free)
856.825.8338 (outside the US)
Email: help@bodybio.com
Fx: 856.825.2143

BodyBio.com | Order Toll Free: 888.320.8338

*These statements have not been evaluated by the Food and Drug Administration.
These products are not intended to diagnose, treat, cure, or prevent any disease.

© Copyright 2021 BodyBio, Inc. All rights reserved.

RG 02-005 Rev 11/21