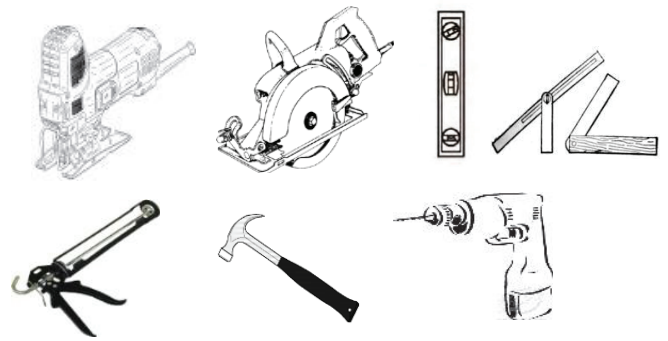


Non-Slip Stair Cover Installation Guide

For Installation on Wood Steps

Tools Required

- Jig Saw or Circular Saw
- Level
- Caulking Gun
- Hammer
- Measuring Tape
- Safety Glasses
- Adhesive Spreader
- Drill

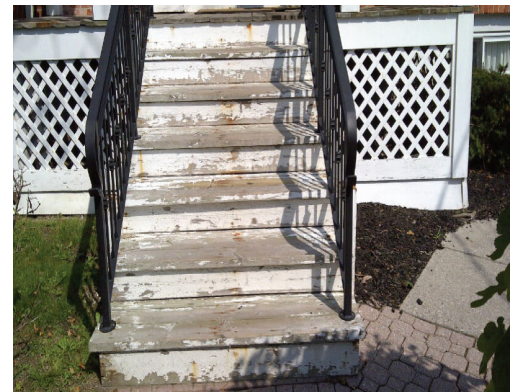


Materials Required

- Wood Screws
- Construction adhesive
- Caulking
- Acetone

Step 1: Surface Preparation

1. Remove any existing coverings from stairs (if applicable). Remove nails, staples and stair nosing.
2. Lightly wire brush the existing steps or sand if required. Surface should be smooth and void of any large imperfections (see warranty notes below).
3. Lightly sand the back of the CompositGrip step cover.
4. Wipe down both surfaces with acetone, paint thinner or similar cleaner.
5. Ensure all surfaces are clean, dry and free of dust before proceeding .

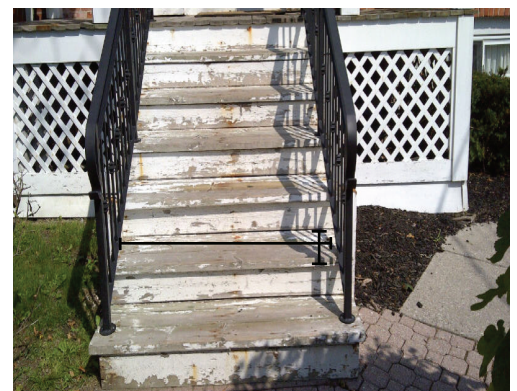


Step 2: Installation

BEFORE CUTTING STEP COVER, ENSURE PATTERN MATCH

1. Measure the length and width of the existing stair tread.
2. Transfer the measurement to the CompositGrip step cover and cut accordingly. The CompositGrip step cover only needs to be cut if the length needs to be modified to fit your step.

NOTE: A circular saw can be used for the majority of the cuts. We recommend using diamond grit tile-cutting blades for the cleanest cut.



Non-Slip Stair Cover Installation Guide

For Installation on Wood Steps

For Indoor Applications

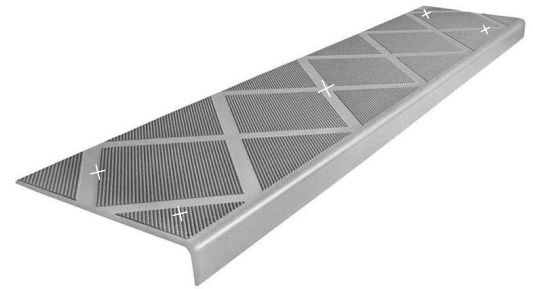
1. Apply the construction adhesive to the back of the step cover following construction adhesive recommendations
2. Using a 3/16 x 3/16" adhesive spreader apply adhesive evenly across the entire backside of cover.
3. Place cover in desired location firmly pushing down on to existing step . Once properly located clamp or place weight evenly distributed on the cover .

NOTE: Follow adhesive manufactures recommendation for clamping/curing time.

For Outdoor Applications

We recommend adding stainless or coated fasteners; minimum 1.25" long.

1. Drill clearance holes for the stainless steel or coated fasteners.
2. Fasten step cover to the existing stair tread.
3. Ensure the step cover is level and squared.
4. Use a minimum of 5 fasteners per step cover and fasten in an 'X' format (2 at each end and 1 in the middle).



Step 3: Finish

Optional

1. Fill the holes with matching color silicone.

Improper installation will void the warranty.

ComposiGrip Step Covers are NOT structural parts and are NOT designed to support full load of step. The load-bearing capacity of each Step Cover is dependent upon the load-bearing capacity of the step it is covering. Step Cover is not designed to bridge large voids or gaps. Deteriorated steps should be filled or levelled prior to installation of Step Covers. All voids larger than 2-inch (5 cm) diameter should be filled. Installations on highpoint load applications (such as 'Bear-Claw' style gratings) should be made using ComposiGrip high strength Industrial Step Covers.

