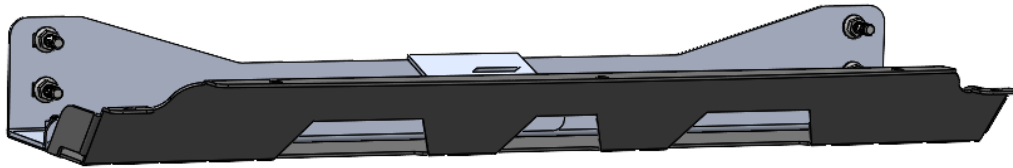


2019-2024 RAM 2500-3500
DEFENDER SKID PLATE
[130204]
INSTALLATION INSTRUCTIONS



SAFETY

Your safety is extremely important to us. Working on vehicles has ever-present hazards which require precautions at all times to avoid injury or death. We've outlined some precautions to take below in order to help you make informed decisions about your safety before installing this product. This is not an exhaustive list, and you must use your own good judgment before performing any work in each step of this installation.

ALWAYS:

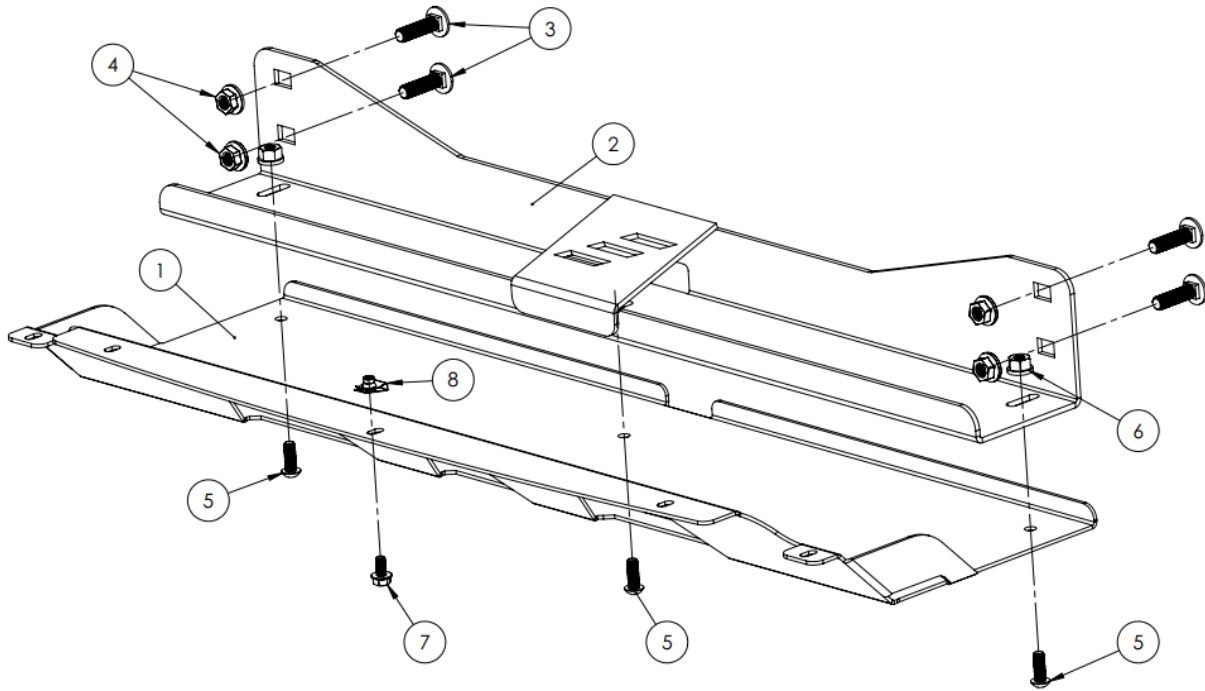
- wear eye protection
- use tire blocks and emergency brake
- disconnect battery(s)
- use care when moving components
- route electrical cables away from moving parts
- identify all pinch points
- wear gloves
- identify slipping and tripping hazards
- wear steel toe footwear
- understand proper use of tools before use
- work on a flat surface
- use care when lifting components
- insulate cables
- jack your vehicle from the OEM's lifting points
- torque all fasteners to suggested specs
- remove any hazards before starting on the job

LIABILITY

All liability for installation and use of this product rests with the owner. Improper installation, maintenance, and operation can result in serious injury or death as well as equipment or vehicle damage. Use this product at your own risk

KIT COMPONENTS

130204 – DEFENDER SKID PLATE, 2019-2024 RAM 2500-3500



ITEM NO.	PART NUMBER	DESCRIPTION	QTY.
1	100229	Skid Plate 2019-2024 HD 2500/3500 Ram	1
2	100231	Cross Member, Skid Plate, 2019-2024 HD 2500/3500 Ram	1
3	240101	M12-1.75x 45mm Zinc Carriage Bolt	4
4	240102	M12-1.75 Zinc Flange Nut	4
5	240144	3/8-16 x 1 Button Head Cap Screw	3
6	240150	3/8" -16 Flanged Hex Nut, Zinc Coated	3
7	240215	M8-1.25 x 16mm Zinc Hex Flange Bolt - BLACK COATED	1
8	240205	M8-1.25 U-Nut	1

SET UP

1. Read this entire document before performing any work.
2. Ensure you have all the parts and hardware shown in Kit Components.
3. Gather the tools required, outlined in **Table 1**.

Table 1

Tool List
○ Metric & Imperial Socket Set
○ ½" Drive Torque Wrench
○ Automotive clip pry tool

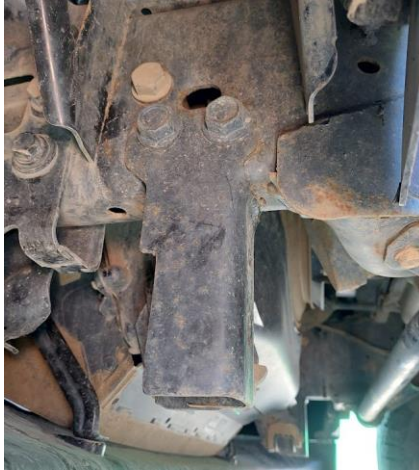
INSTALLATION

4. Hoist the vehicle from RAM specified safe lifting points. If work is not being performed on hoist, park on ground, engage parking brake and chock tires.
5. Remove the lower bumper valence.
 - a. Unfasten the 14x M10 nuts on the top lip of the valence.
 - b. Remove the 2x plastic body clips on the front face of the valence.
 - c. Pry the valence off the bumper.
6. Drill out the center hole on the bottom face of the bumper to approximately 7/16" to allow for the U-nut to seat properly.

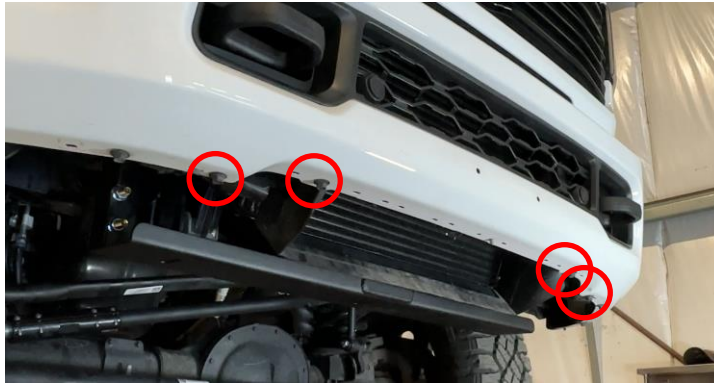


7. Install the M8 U-nut onto the front bumper with the threaded boss facing upwards.

8. If your truck does not come with compatibility brackets from the factory, install the VICE Compatibility Bracket kit onto the frame using hardware supplied with the compatibility brackets.



9. Install the cross brace onto the compatibility brackets using the 2x carriage bolts on each side and torque to **65ftlbs.**
10. Remove the four middle most bolts which fasten the bumper to the frame mounts.



11. Install the skid plate.
 - a. Use the four factory RAM bolts removed in the previous step, and the supplied black M8 bolt to fasten the front lip of the skid plate to the bumper.
 - b. Use the three 3/8" Stainless button head fasteners through the rear of the skid plate.