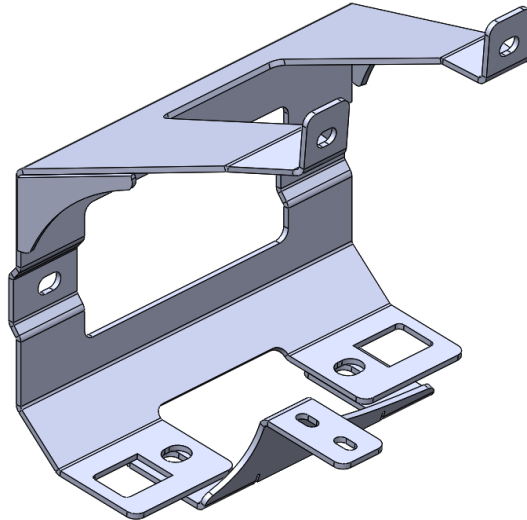


2021-2022 RAM TRX

OIL COOLER RELOCATION BRACKET

INSTALLATION INSTRUCTIONS



SAFETY

Your safety is extremely important to us. Working on vehicles has ever-present hazards which require precautions at all times to avoid injury or death. We've outlined some precautions to take below in order to help you make informed decisions about your safety before installing this product. This is not an exhaustive list, and you must use your own good judgment before performing any work in each step of this installation.

ALWAYS:

- wear eye protection
- use tire blocks and emergency brake
- disconnect battery(s)
- use care when moving components
- route electrical cables away from moving parts
- identify all pinch points
- wear gloves
- identify slipping and tripping hazards
- wear steel toe footwear
- understand proper use of tools before use
- work on a flat surface
- use care when lifting components
- insulate cables
- jack your vehicle from the OEM's lifting points
- torque all fasteners to suggested specs
- remove any hazards before starting on the job

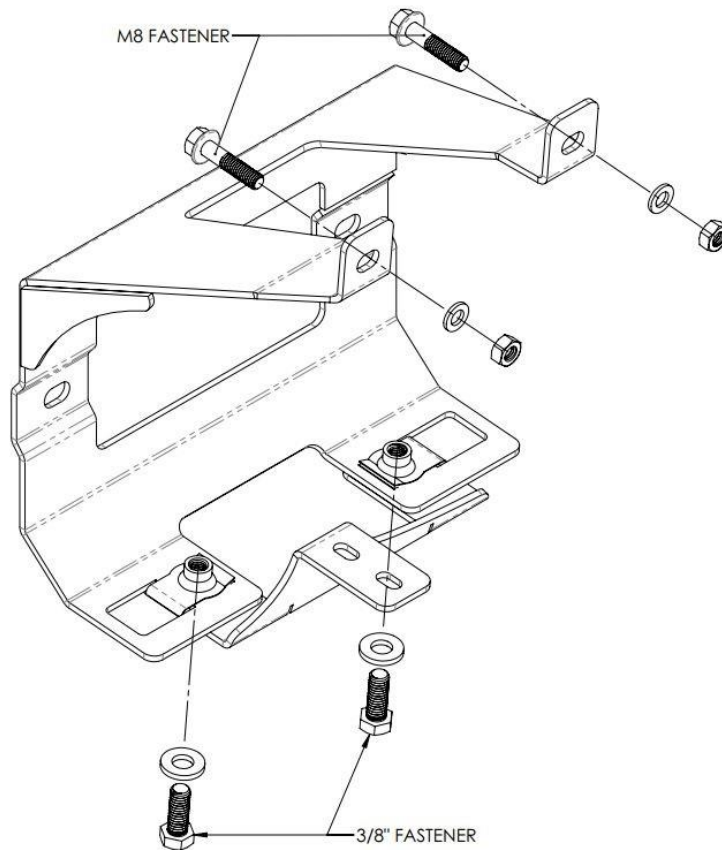
LIABILITY

All liability for installation and use of this product rests with the owner. Improper installation, maintenance, and operation can result in serious injury or death as well as equipment or vehicle damage. Use this product at your own risk.

KIT COMPONENTS

ITEM NO.	PART NUMBER	DESCRIPTION	QTY.
1	100123	TRX OIL COOLER RELOCAION BRACKET	1
2	1137939	3/8" U-Nut, 0.75" Throat	2
3	90850A200	3/8 WASHER, YELLOW ZINC	2
4	92865A624	3/8-16 x 1 Steel Hex Head Screw	2
5	94036A435	M8 x 35 Flanged Hex Head Bolt	2
6	90591A161	M8-1.25 Hex Nut	2
7	98688A117	M8 Washer	2

HARDWARE DIAGRAM



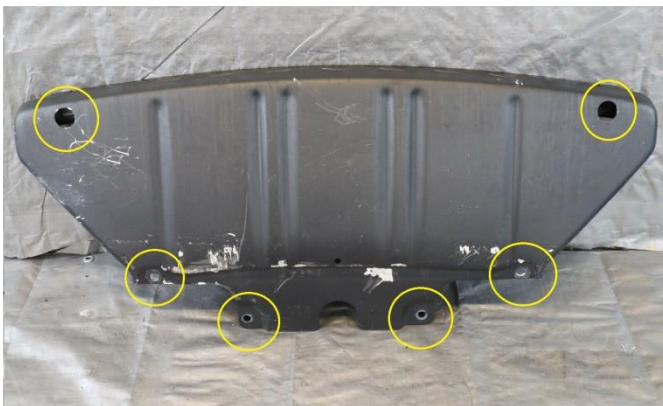
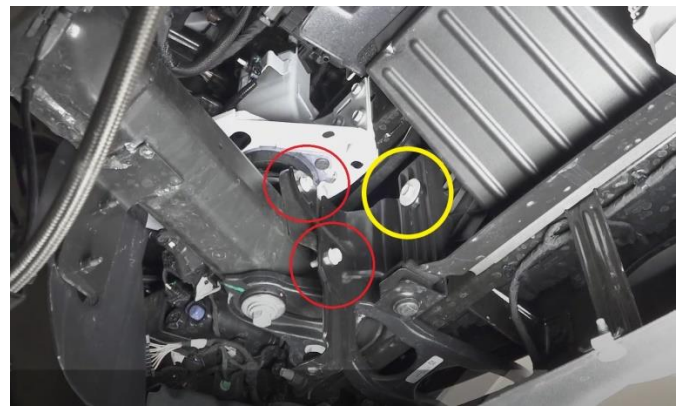
SET UP

1. Read this entire document before performing any work.
2. Gather the tools required, outlined in **Table 1**.

Table 1

Tool List	
<input type="checkbox"/>	Metric & Imperial Socket Set
<input type="checkbox"/>	Appropriate Drive Ratchets
<input type="checkbox"/>	Wrench Set

3. Park your RAM TRX on flat ground, engage the emergency brake, and block the tires
4. Unpack your Kit and its components and set it on a workbench to be prepped for installation. Ensure you have all the Kit Components outlined on Page 2.
5. Remove the TRX Skidplate located under the front bumper. It is held in place with 6 fasteners, locations are circled in Figure 1 Below
6. Support the plastic bracket that holds the oil cooler. Remove the two fasteners circled in red on both sides, and then undo the fastener circled in yellow. The last fastener will not come out but it will detach the metal bracket. Refer to Figure 2

**Figure 1****Figure 2**

7. Now that you have access to the oil cooler, remove the fasteners (2 on bottom saddle and two on top) that hold it to the plastic mount. Use a zap strap to tie the cooler up and out of the way.
8. Remove two front shock external reservoirs from the front suspension bulkhead (directly below the engine) by undoing the 1 bolt holding the plastic clasp in place. This exposes the two fasteners that hold the mount to the bulkhead. Remove these two bolts and set the plastic clasp on top of the relocation bracket as shown in Figure 3 below.

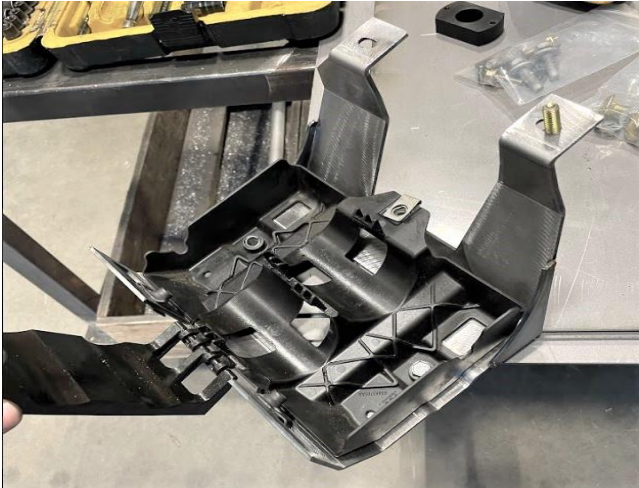


Figure 3



Figure 4

9. Install the assembly onto the bulkhead using the factory fasteners removed last step. Reinstall the two Bilstein shock reservoirs into the bracket and retain them by re-installing the factory bolt in the clasp as shown in Figure 4. Install the two 3/8" U-Nuts into holes on the bottom of the steel bracket.



Figure 5

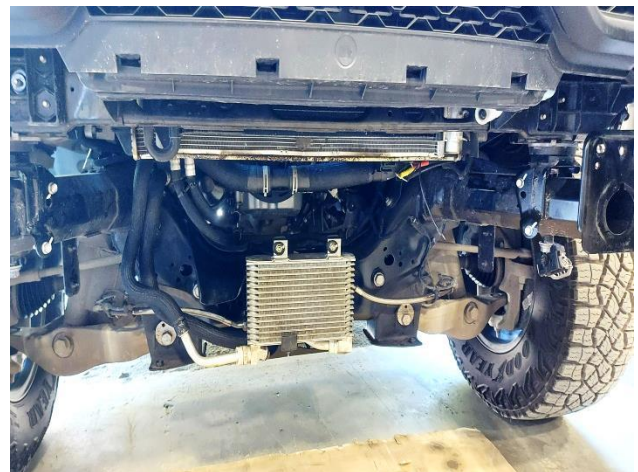


Figure 6

10. Install the relocation kit's secondary bracket onto the main bracket as shown in Figure 5 using the 3/8x1 bolts (highlighted in yellow circle). Fasten the saddle removed in step 16 to the secondary bracket using the factory studs and nut (red circle)

 11. Sit the oil cooler on the rubber saddle and line up the holes on the top of the oil cooler with the relocation bracket. Install the supplied M8x35mm fasteners in the top holes. The finished assembly shown in Figure 6

 12. Ensure the oil cooler lines are free of kinks and are not rubbing on any sharp materials. Use tie straps if required to prevent this.

 13. Re-install the skidplate with the OEM fasteners, and torque those to 65 ft lbs.
-