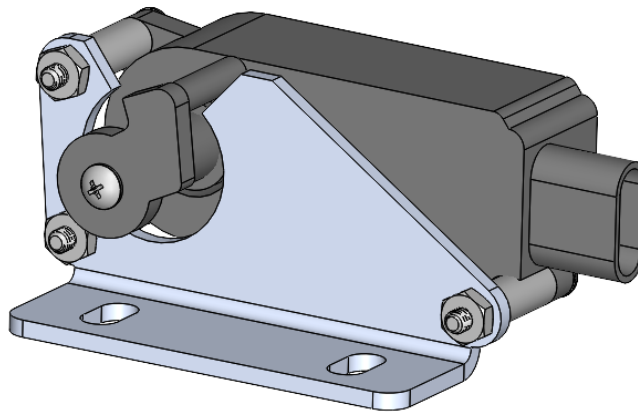


5th GEN RAM 1500 & REBEL with ECODIESEL ENGINE
BUMPER ACTIVE GRILL SHUTTER DELETE KIT
[100113]
INSTALLATION INSTRUCTIONS



SAFETY

Your safety is extremely important to us. Working on vehicles has ever-present hazards which require precautions at all times to avoid injury or death. We've outlined some potential hazards below in order to help you make informed decisions about your safety before installing this product. This is not an exhaustive list, and you must use your own good judgment before performing any work in each step of this installation.

ALWAYS:

- wear eye protection
- use tire blocks and emergency brake
- disconnect battery(s)
- use care when moving components
- route electrical cables away from moving parts
- identify all pinch points
- wear gloves
- identify slipping and tripping hazards
- wear steel toe footwear
- understand proper use of tools before use
- work on a flat surface
- use care when lifting components
- insulate cables
- jack your vehicle from the OEM's lifting points
- torque all fasteners to suggested specs
- remove any hazards before starting on the job

LIABILITY

All liability for installation and use of this product rests with the owner. Improper installation, maintenance, and operation can result in serious injury or death as well as equipment or vehicle damage. Use this product at your own risk.

COMPONENT CHECKLIST

COMPONENT	QTY	
Active Shutter Motor Bracket [100113]	1	

HARDWARE CHECKLIST

HARDWARE	QTY	
#8-32 x 1-3/8	3	
#8-32 x 2-1/2	1	
#8 Washer	1	
#8-32 Nut	5	
5/16 x 3/4 White Nylon Spacer	3	
1/4 x 3/4 BHSCS	2	
1/4" Washer	2	
1/4" Nut	2	
11/64 Drill Bit	1	

INSTALLATION PREPERATION

1. Read this entire document before peforming any work.
2. Gather the tools required outlined in Table 1 below.

Table 1: Tools Required	
<input type="checkbox"/>	Metric and Imperial Socket and wrench set
<input type="checkbox"/>	Socket extensions (short and long)
<input type="checkbox"/>	T45 Torx Bit
<input type="checkbox"/>	Small Flathead or clip tool
<input type="checkbox"/>	Phillips #2 Screwdriver
<input type="checkbox"/>	Zip Disc or Dremel or hacksaw
<input type="checkbox"/>	Electric Impact (optional)
<input type="checkbox"/>	Hand Drill

3. Park your RAM Truck on flat ground, engage the emergency brake, and block the tires.
4. Remove the Front bumper from your truck to access the active grill shutter assembly. For front bumper removal instructions, refer to Manual MN0109_B or scan the QR Code below to watch our YouTube Video that details the procedure.



5. To access the grill shutter assembly, you first need to remove the bumper primary mounting bracket. To do this you will have to remove on each side : 9x 13mm head bolts (Yellow), 4x Torx Bolts (Green), and 4x 10mm Bolts (Blue) shown in **Error! Reference source not found.** below. Pry off the harness from main bumper mounting surface and remove it along with the plastic dam behind it. Refer to Figure 1

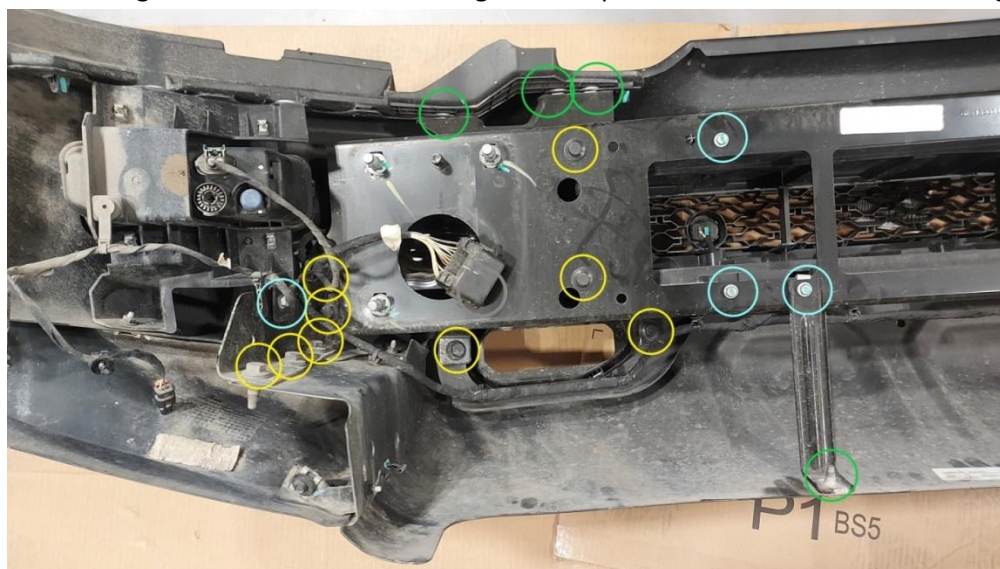


Figure 1

6. Unplug the Grill Shutter Motor from the bumper harness and remove the shutter assembly from the bumper.
7. Remove the front plastic shroud from the shutter assembly. Using a pry tool or flathead screwdriver, pry the plastic over the tabs in the locations outlined in Figure 2



Figure 2

8. Mark the driver side louver at the motor spline in the position it was when removed. It should be in the open position. Refer to Figure 4.

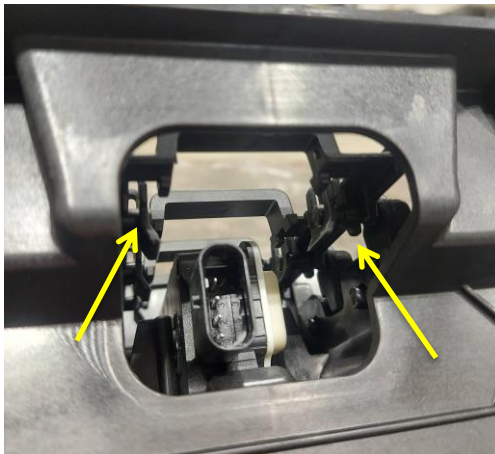


Figure 3



Figure 4

9. Remove the plastic bridge that connects the louvers together. On the motor side there are tabs, shown in Figure 3 which will release the bridge.
10. Remove clip, shown in Figure 5 that secures the motor in place by sliding it to the left.
11. Remove the two louvers connected to the motor, along with the motor. You'll have to pop the louver out of its holder to free it from the assembly.
12. We now have to modify the driver's side louver. Using a cutting device (hacksaw, zip disc or similar) cut along the red line shown in Figure 6, yielding the results shown in Figure 7

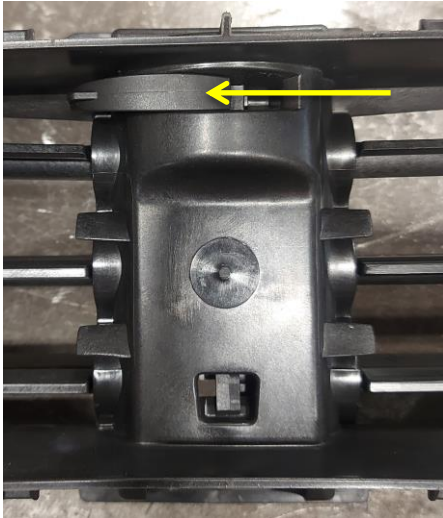


Figure 5

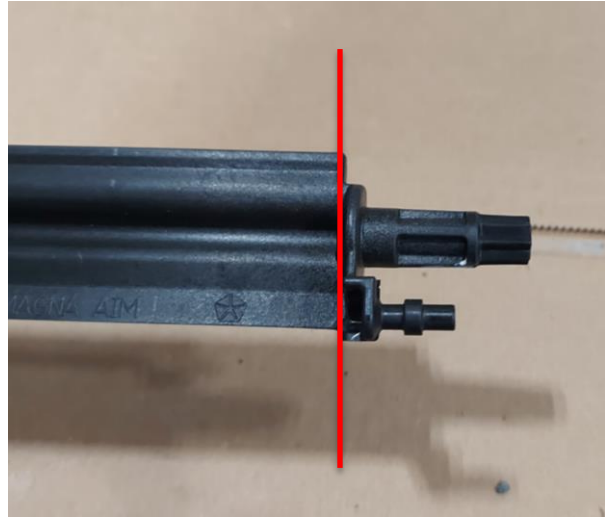


Figure 6

13. Using the supplied 11/64" Drill bit, drill out the center of the splined section removed in the last step. This completed component is shown in Figure 8



Figure 7



Figure 8

14. Install the spline section back into the motor, aligning it with the mark you made in Step 8. Secure it in place using the #8 x 2-1/2 Machine Screw, followed by a washer and two nuts. Lock the nuts together so secure it in place as shown in Figure 9.
15. Slide the Active Shutter Motor Bracket over the modified Louver Arm, and secure it in place using the three #8 x 1-3/8 Machine screws. Space the bracket out from the motor using the supplied Nylon Spacers. The finished assembly is shown in Figure 10. Note the location of the Shutter arm. This is the "open position" it should have defaulted to.
16. Plug the Grill Shutter Motor back into the bumper wiring harness.
17. Secure the Mount in place using the supplied 1/4" Button Head Socket Cap Screws and Nuts. If you are installing on our MOD V2 Bumper, we recommend securing it above the Fairlead Mount as shown in Figure 11.

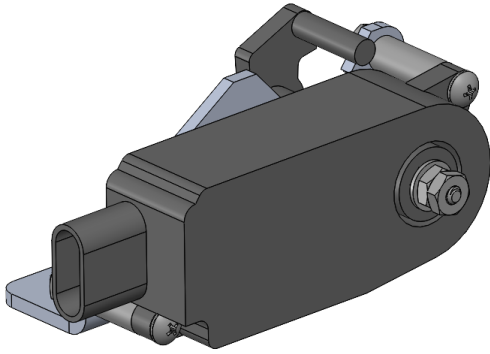


Figure 9

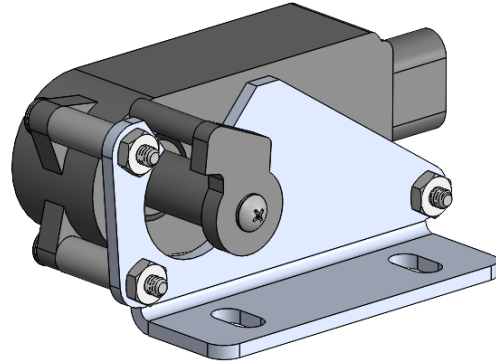


Figure 10

18. Congratulations the installation is complete!

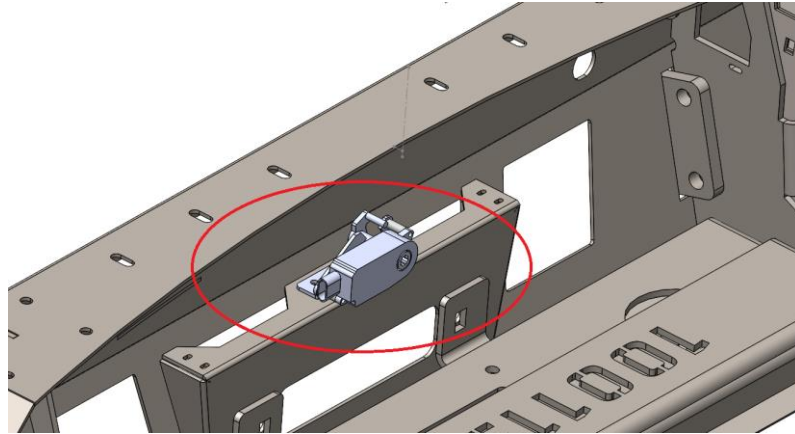


Figure 11