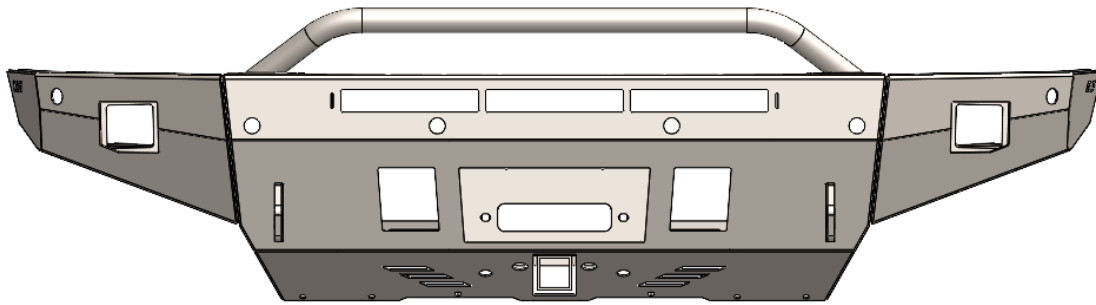


2009-2018 RAM 1500 DT
MOD V2 BUMPER (M00460)
INSTALLATION INSTRUCTIONS



SAFETY

Your safety is extremely important to us. Working on vehicles has ever-present hazards which require precautions at all times to avoid injury or death. We've outlined some precautions to take below in order to help you make informed decisions about your safety before installing this product. This is not an exhaustive list, and you must use your own good judgment before performing any work in each step of this installation.

ALWAYS:

- wear eye protection
- use tire blocks and emergency brake
- disconnect battery(s)
- use care when moving components
- route electrical cables away from moving parts
- identify all pinch points
- wear gloves
- identify slipping and tripping hazards
- wear steel toe footwear
- understand proper use of tools before use
- work on a flat surface
- use care when lifting components
- insulate cables
- jack your vehicle from the OEM's lifting points
- torque all fasteners to suggested specs
- remove any hazards before starting on the job

LIABILITY

All liability for installation and use of this product rests with the owner. Improper installation, maintenance, and operation can result in serious injury or death as well as equipment or vehicle damage. Use this product at your own risk.

NOTE



The installation presented in this manual was performed on a 2013 RAM 1500 Sport and may differ slightly from other 4th generation models.

TABLE OF CONTENTS

SET UP.....	1
STOCK BUMPER REMOVAL.....	2
BUMPER PREPARATION.....	6
WINCH MOUNT INSTALLATION (OPTIONAL).....	8
BUMPER INSTALLATION	9

SET UP

1. Read this entire document before performing any work.
2. Gather the tools required, outlined in **Table 1**.

Table 1

Tool List
○ Appropriate Drive Ratchets
○ 8mm, 10mm, deep 17mm, 18mm, 19mm and 21mm Sockets
○ 18mm wrench
○ Plastic Pry Tool
○ Flathead Screw Driver
○ Sawzall, Grinder with Zip Disk or Other
○ Drill with 3/16" bit
○ Electric Impact (recommended)
○ Torque Wrench
○ Other tools dependant on hardware provided by winch manufacturer

3. Park your RAM on flat ground, engage the emergency brake, block the tires, and disconnect the negative battery terminal.
4. Torque all 3/8" hardware to **25 ft-lbs** and all M12 and 1/2" hardware to **65 ft-lbs**.

STOCK BUMPER REMOVAL

1. Underneath the bumper, disconnect the fog lights and parking sensors, if equipped.
2. Remove the six (6) plastic clips securing the plastic cover to the top of the grille with a plastic pry tool, as shown in **Figure 1**. Remove the cover and set aside.



Figure 1



Figure 2

3. Remove the four (4) 10mm fasteners along the top of the grille and carefully pull the grille straight back off the truck.
4. Inside the front wheel well, remove the plastic clip shown in **Figure 2**. With the cover open, reach in and push up on the white clip shown in **Figure 3** to allow removal of the headlight. Repeat for the other side.



Figure 3

5. Remove the two (2) 10mm bolts shown in **Figure 4** and pull the headlight forward to disconnect the wiring. Remove the headlight, and repeat for the other side.



Figure 4

6. Reaching from inside the wheel well, remove the 10mm bolt shown in **Figure 5**. You may need to detach the inner fender for more clearance. Repeat for the other side.



Figure 5

7. Remove the four (4) 10mm fasteners underneath the bumper, as shown in **Figure 6**.



Figure 6

8. The factory bumper cover is now retained by a series of clips. Starting from the outside edge, gently pull the bumper cover away from the truck to release the clips.
9. With the bumper cover removed, remove the two (2) 10mm bolts on the plastic filler piece shown in **Figure 7**. Repeat for the other side.



Figure 7

10. The factory bumper is fastened to each frame rail with three (3) 18mm nuts, as shown in **Figure 8**. Remove the three (3) nuts from each side, and then remove the factory bumper.



Figure 8

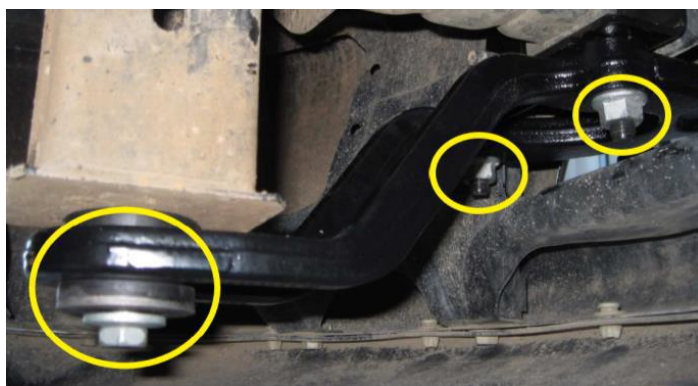


Figure 9

11. Remove the factory tow hooks (if equipped) by removing the one (1) 18mm head fastener at the back and two (2) 18mm sized nuts at the front on both sides and shown in **Figure 9**.
12. If your truck is equipped with parking sensors, remove them from the factory bumper by prying the mounting ears with a flathead screwdriver or squeezing the mounting tabs, depending on your factory bumper.

BUMPER PREPARATION

13. Prepare a work surface by placing down cardboard to avoid damaging the finish on the bumper. Place the center piece of the bumper down on the top face down on the cardboard.
14. If purchased, first install the 32" light bar. With the wiring harness on the driver's side of the truck, secure the light bar into the tabs in the bumper using the hardware included with the light bar.
15. Mount the tow lugs to the center piece using two (2) 1/2" bolts, four (4) 1/2" washers, and two (2) 1/2" nuts for each tow lug, as shown in **Figure 11**.



Figure 11



Figure 12

16. On the side of the center piece, insert the three (3) 3/8" bolts into the slots indicated in **Figure 12**. Set the retaining washer each bolt, then push the washer flat with a socket (13mm or similar). Repeat on the other side.
17. Install the six (6) M12 carriage bolts into the frame mount holes on the inside of the bumper (three on each side), as shown in Error! Reference source not found.. Use a 21mm deep socket to secure the rovided M12 retaining washers.



Figure 13



Figure 14

18. If purchased, install the pod lights into the sides of the bumper by sliding the light and wiring harness through the front of the bumper and securing in place with the hardware included with the lights, as shown in Error! Reference source not found..
19. Install the sides of the bumper onto the center section by sliding the sides over the previously installed 3/8" studs and secure with 3/8" nuts and washers, as shown in Error! Reference source not found.. Leave the nuts hand tight for now to allow for easier adjustability once the bumper is installed on the truck.
20. If purchased, install the 6" round lights into the top of the bumper, using the hardware included with the lights.
21. If purchased, install the bulbar using six (6) 3/8" stainless steel button head screws and secure in place with 3/8" nuts and washers, as shown in Error! Reference source not found..



Figure 15



Figure 16

22. If equipped with parking sensors, install the parking sensors into the MOD bumper. For trucks with the Sport factory bumper, an additional bezel is required for each sensor (Part Number **5LT35ZZZAA**). Otherwise, install the provided plugs into the parking sensor mounting holes.

WINCH MOUNT INSTALLATION (OPTIONAL)

23. Install the two provided brackets onto the frame using the short M12 bolt. Ensure the brackets are oriented as shown in Error! Reference source not found., with the vertical rectangular slots facing towards the center of the vehicle.
24. Install the winch plate in between the two frame brackets and secure in place with the provided M12 carriage bolts and flange nuts, as shown in **Figure 18**. Leave the bolts hand tight for now to allow for adjustability after installing the bumper on the truck.



Figure 17



Figure 18

25. Install the selected winch as per manufacturer's instructions. If purchased, install the control box relocation kit using the provided instructions.
26. If purchased, install the hitch receiver to the bottom of the winch mount plate using the provided 1/2" hardware.

BUMPER INSTALLATION

27. If any lighting options were purchased, install the provided wiring harnesses onto the lights now.
28. For the fog lights, first connect the wiring harness on the fog light to the provided fog light adapter, then to the male end of the anti-flicker module ensuring the polarity of the wires is correct. The female end of the anti-flicker module will then plug into the original factory harness. Ensure the plug shown in Error! eference source not found. is on the driver's side of the bumper.



Figure 19



Figure 20

29. If ordered, line up the lower headlight filler panels below the headlight and hand tighten the 10mm bolt shown in **Figure 5** and the plastic screw shown in **Figure 20** to allow easy adjustment later.



Figure 21

30. Reinstall the headlight by reconnecting the wiring and fastening the two (2) 10mm bolts. Confirm alignment of the lower headlight filler panels and tighten two (2) 10mm bolts. Repeat for other side.

31. Reinstall the grill by pushing straight into the truck, and then tighten the four (4) 10mm fasteners at the top.
32. Slide the bumper onto the factory frame mounts, aligning the previously installed carriage bolts and secure with the provided M12 flange nuts. Adjust the fitment of the bumper before tightening the M12 frame mount nuts and the 3/8" wing mount nuts on the sides of the bumper.
33. Reattach the fog light harness and parking sensor harness, if equipped.
34. Remove the bolt and fender washer from the body mount shown in **Figure 22** then install the provided support bracket using this bolt and a provided 3/8" carriage bolt, nut, and washer, as shown in **Figure 23**.



Figure 22



Figure 23

35. Hold the inner fender trim up against the support bracket and use the holes in the support bracket to drill through the inner fender with a 3/16" drill bit. Use zip ties to secure the inner fender to the support bracket and trim away the excess.
36. If you are running a winch, spool some rope through the fairlead and install the fairlead onto the bumper using the hardware included with the winch.
37. If equipped, ensure proper fitment of the winch plate and the hitch receiver, then tighten the nuts on the winch plate and the hitch receiver.
38. Finish wiring the winch by connecting the red power cable to the positive terminal of the battery, and then connect the black ground cable to the negative terminal.
39. After 100 km (60 miles) of driving and after first use of the winch, check all fasteners and re-torque to previously outlined specifications.