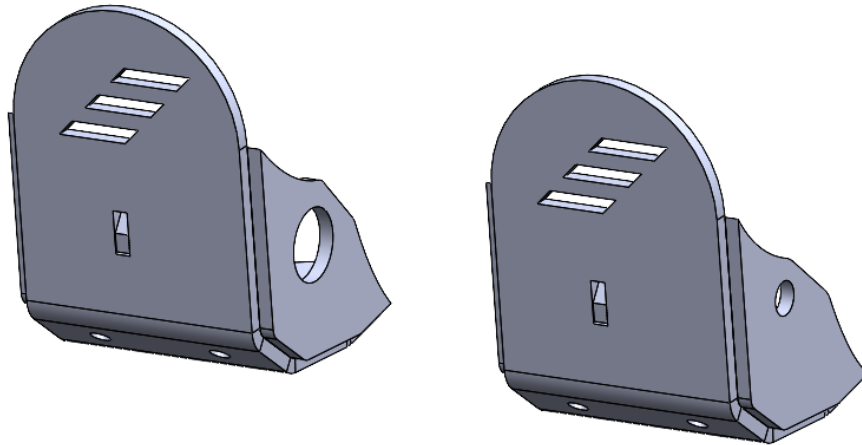


2019-2022 RAM 1500

Shock Skid Plate

INSTALLATION INSTRUCTIONS



Your safety is extremely important to us. Working on vehicles has ever-present hazards which require precautions at all times to avoid injury or death. We've outlined some precautions to take below in order to help you make informed decisions about your safety before installing this product. This is not an exhaustive list, and you must use your own good judgment before performing any work in each step of this installation.

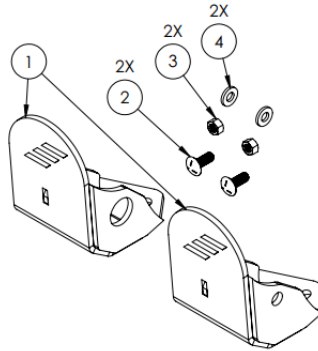
ALWAYS:

- wear eye protection
- use tire blocks and emergency brake
- disconnect battery(s)
- use care when moving components
- route electrical cables away from moving parts
- identify all pinch points
- wear gloves
- identify slipping and tripping hazards
- wear steel toe footwear
- understand proper use of tools before use
- work on a flat surface
- use care when lifting components
- insulate cables
- jack your vehicle from the OEM's lifting points
- torque all fasteners to suggested specs
- remove any hazards before starting on the job

LIABILITY

All liability for installation and use of this product rests with the owner. Improper installation, maintenance, and operation can result in serious injury or death as well as equipment or vehicle damage. Use this product at your own risk.

Kit Contents



ITEM NO.	PART NUMBER	DESCRIPTION	QTY.
1	100114	REAR SHOCK SKID PLATE, RAM 1500	1
2	21817	3/8"-16 x 1" Zinc Finish SAE J429 Grade 5 Round Head Carriage Bolt	2
3	94895A031	3/8" - 16 GRADE 8 NUT, YELLOW ZINC	2
4	90850A200	3/8 WASHER, YELLOW ZINC	2

Install Process

1. Unbolt and remove the lower shock bolt.
2. Jack the truck up from the frame rail.
3. Line up shock skid plate to shock mounting bolt hole.
4. Feed shock mount bolt through skid plate as well as shock.
 - a. Leave shock bolt loose.
5. Pivot shock skid plate back until the 3/8" bolt hole lines up with the bold hole on the lower shock mounting plate.
6. Insert and tighten the 3/8" carriage bolt.
7. Tighten shock mounting bolt.
8. Repeat process on opposing side.