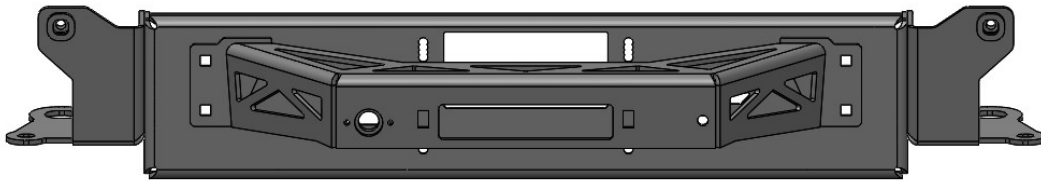


2019-2023 RAM 1500 DT / REBEL
INTEGRATED WINCH
[130112 /130113]
INSTALLATION INSTRUCTIONS



SAFETY

Your safety is extremely important to us. Working on vehicles has ever-present hazards which require precautions at all times to avoid injury or death. We've outlined some precautions to take below in order to help you make informed decisions about your safety before installing this product. This is not an exhaustive list, and you must use your own good judgment before performing any work in each step of this installation.

ALWAYS:

- wear eye protection
- use tire blocks and emergency brake
- disconnect battery(s)
- use care when moving components
- route electrical cables away from moving parts
- identify all pinch points
- wear gloves
- identify slipping and tripping hazards
- wear steel toe footwear
- understand proper use of tools before use
- work on a flat surface
- use care when lifting components
- insulate cables
- jack your vehicle from the OEM's lifting points
- torque all fasteners to suggested specs
- remove any hazards before starting on the job

LIABILITY

All liability for installation and use of this product rests with the owner. Improper installation, maintenance, and operation can result in serious injury or death as well as equipment or vehicle damage. Use this product at your own risk.

NOTE

The installation presented in this manual was performed on a 2019 Ram Rebel and may differ slightly from the Ram 1500 DT or newer 5th generation Ram models.



TABLE OF CONTENTS

PARTS LIST1

SET UP3

WINCH PREPARATION4

WINCH MOUNT PREPARATION4

STOCK BUMPER REMOVAL6

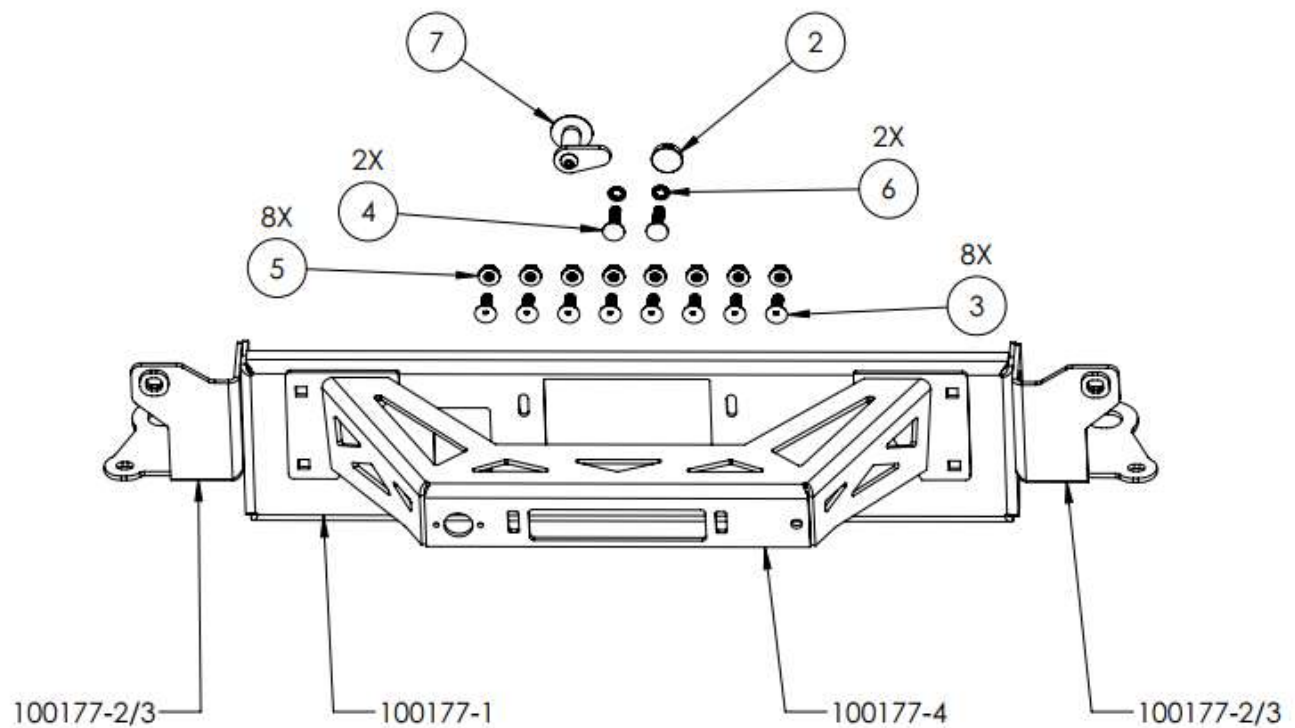
WINCH MOUNT INSTALLATION9

BUMPER PREPARATION FOR REINSTALLATION..... 10

BUMPER INSTALLATION 13

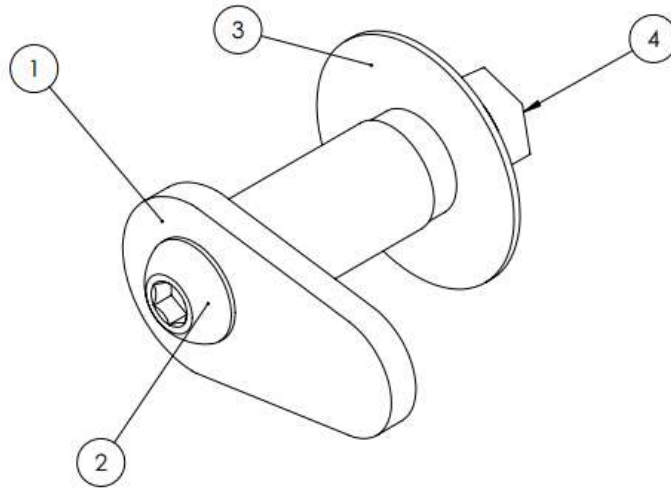
PARTS LIST

ITEM NO.	PART NUMBER	DESCRIPTION	QTY.
1	100177	Hidden Winch Mount, 2019-2023 RAM REBEL [5th Gen] [W080]	1
2	240175	1-3/8" ID Black Plastic Plug	1
3	240100	M12-1.75x 35mm Zinc Carriage Bolt	8
4	240101	M12-1.75x 45mm Zinc Carriage Bolt	2
5	240102	M12-1.75 Zinc Flange Nut	8
6	240103	M12 Push Nut Retainer	2
7	130130	HOOK ANCHOR, HIDDEN WINCH MOUNTS	1



ASSEMBLY 130130

ITEM NO.	PART NUMBER	DESCRIPTION	QTY.
1	100137	HOOK ANCHOR, HIDDEN WINCH KITS	1
2	240104	M12-1.75 x 80 Button Head Screw SS	1
3	240106	1/2" Oversized Washer, 2" OD, BLACK	1
4	240102	M12-1.75 Zinc Flange Nut	1



SET UP

1. Read this entire document before performing any work.
2. Gather the tools required, outlined in **Table 1**.

Table 1

Tool List
○ 4mm and 8mm Allen keys
○ Appropriate Drive Ratchets
○ 8mm, 10mm, deep 17mm, 18mm, 19mm and 21mm Sockets
○ 18mm wrench
○ Plastic Pry Tool (recommended)
○ Flathead Screw Driver
○ Sawzall, Grinder with Zip Disk or Other
○ Hammer/Rubber Mallet
○ Electric Impact (recommended)
○ Torque Wrench
○ Transmission Jack/Floor Jack
○ Other tools dependant on hardware provided by winch manufacturer

3. Park your RAM on flat ground, engage the emergency brake, block the tires, and disconnect the negative battery terminal.

WINCH PREPARATION

4. If you did not purchase the optional Clutch Relocation Kit available for Smittybilt X₂O and selected Warn winches, please proceed to Step 12. The following steps will outline the process for clocking the clutch side housing of the Smittybilt X₂O 12000lb Comp Series Winch and installing the VICE Replacement Cam Insert.
5. Remove the seven (7) 4mm Allen head fasteners shown in **Figure 1**, located on the clutch side of the housing. Note to keep the housing supported when removing the last fastener.
6. Rotate the housing 180 degrees, as shown in **Figure 2**. Note to position the winch so that the clutch handle has clearance to rotate upside down.



Figure 1



Figure 2

7. Reinstall the seven (7) 4mm Allen head fasteners and flip the winch upside down.
8. Remove the clutch handles 4mm Allen head set screw as shown in **Figure 3** and remove the clutch handle.
9. Remove the O-Ring and rubber washer on the clutch handle. It is recommended to use something soft, such as the plastic pry tool seen in **Figure 4** to remove the O-Ring.



Figure 3



Figure 4

10. Install the O-Ring and rubber washer on the VICE Clutch Relocation Cam as shown in **Figure 5** and apply a bit of grease.
11. Install the VICE Clutch Relocation Cam on the winch as shown in **Figure 6** and re-install the 4mm Allen head set screw. Check to make sure the clutch functions properly.

**Figure 5****Figure 6**

12. Attach the winch wiring as per manufacturer instructions.

WINCH MOUNT PREPARATION

13. Install the winch on the Winch Mount Plate as shown in **Figure 7** with hardware provided by your winch manufacturer. Make sure the square cut out in the Winch Mount Plate slides over the VICE Relocation Cam Insert, if installed.
14. Align the winch drum so it spools out roughly 1/3 the way up the opening in the Winch Mount Plate as indicated in **Figure 8**.



Figure 7

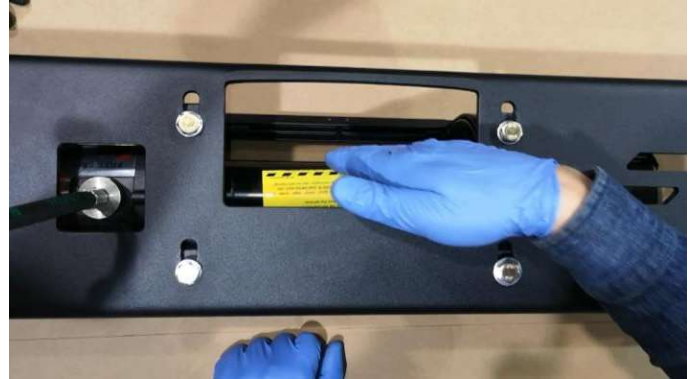


Figure 8

15. Install the Fairlead Mount on the winch plate as shown in **Figure 9** with four (4) M12x35 Carriage Bolts and M12 Flange-Nuts provided in the hardware kit. Note to leave these finger tight to allow for adjustment later.
16. If the Clutch Relocation Cam Insert is installed, install the bearing block as shown in **Figure 10** and fasten with the countersunk M6 hardware provided.



Figure 9



Figure 10

STOCK BUMPER REMOVAL

18. Remove the five (5) 8mm head, lower inner fender fasteners on both sides as shown in **Figure 12**.
19. Disconnect the front bumper wiring connector located on the outside of the driver side frame rail at the front of the truck. Push the red lock tab out, release the pivot latch by pressing the lock tab as seen in **Figure 13** and pull the pivot latch.



Figure 12



Figure 13

20. Remove the front four (4) 8mm head fasteners on the upper inner fender just under the fender flare as shown in **Figure 14** and pull down the front section as shown in **Figure 15** for both sides.
21. Remove the front half of the fender flares on both sides by pinching the plastic clips from inside the fender and pulling the flare out as shown in **Figure 16**.
22. Remove the one (1) 10mm head fastener at the top of the lower headlight body panels as shown in **Figure 17**.



Figure 14

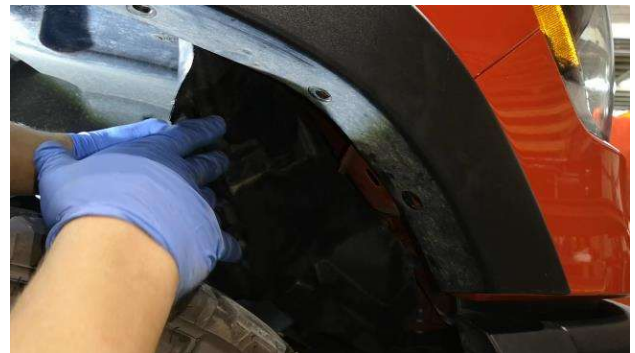


Figure 15



Figure 16



Figure 17

23. Remove the lower headlight body panels by starting at the back as shown in **Figure 18** and pulling outward while bending the black plastic block from inside the fender shown in **Figure 19** to release the upper clip.

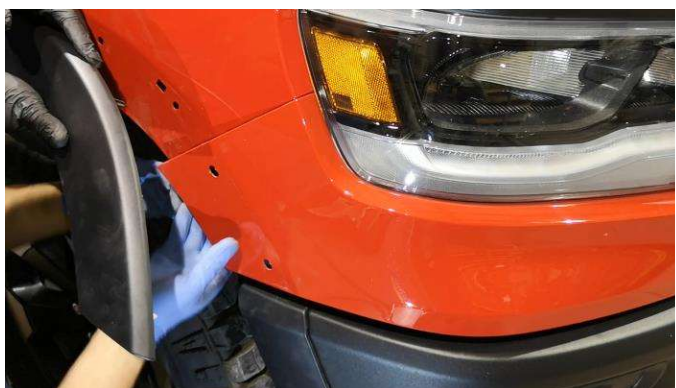


Figure 18



Figure 19

24. Remove the three (3) main bumper mounting nuts shown in **Figure 20** (18mm socket) on either side of the bumper. It is a good idea to leave one nut at the end of the stud threads so the bumper stays on until you are ready to remove it.
25. With a helper, remove the safety nuts left at the end of the stud threads and remove the bumper by pulling the bumper away from the truck as in **Figure 21**. It is also a good idea to place the bumper on a clean/soft surface that will not scratch it.



Figure 20



Figure 21

26. Remove the tow hooks by removing the one (1) 18mm head fastener and one (1) 21mm head fastener that secure them on either side. Note the 18mm head fastener has a retaining washer keeping it from being completely removed. A wrench, pliers or other can be used with a hammer as shown in **Figure 22** to remove it. Note if your truck model does not have tow hooks, still remove the 18mm head fastener on either side.



Figure 22

WINCH MOUNT INSTALLATION

27. Install the driver side tow hook with the driver side Frame Bracket sandwiched beneath as shown in **Figure 23**, with the tow hook hardware. If your model does not have tow hooks, use the VICE Tow Hook Replacement Plate and M14 hardware provided. Torque the front M14 fastener to **136 ft-lbs** and the rear M12 fastener to **85 ft-lbs**.
28. With a helper, a jack (preferably a transmission jack or similar) can be used to lift the winch mount assembly into position by hooking the passenger side Frame Bracket around the frame as shown in **Figure 24** below.



Figure 23



Figure 24

29. Install two M12x35 Carriage Bolts and Flange-Nuts (18mm) to mount the driver side Frame Bracket to the Winch Mounting Plate as shown in **Figure 25**. Again Torque these to **75 ft-lbs**.
30. Fasten the Frame Bracket with the Tow Hook on the passenger side as seen in **Figure 26**, and as done on the driver side. Again Torque the M14 to **136 ft-lbs** and the M12 to **85 ft-lbs**.

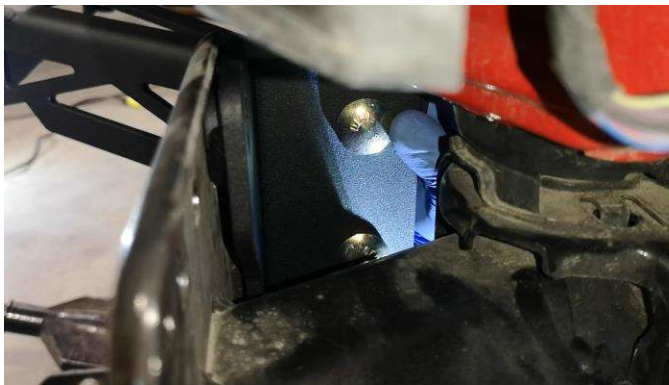


Figure 25



Figure 26

BUMPER PREPARATION FOR REINSTALLATION

31. A portion of the sheet metal inside the bumper needs to be removed to allow clearance for the Fairlead Mount. The marked area can be seen in **Figure 27**. Note to wear proper PPE based on your method to cut the sheet metal: safety glasses, face shield, gloves, long sleeves, hearing protection etc.
32. Deburr the cut edges, the result can be seen in **Figure 28**.



Figure 27



Figure 28

33. Remove the eleven (11) upper fasteners (8mm) and lower 10 plastic clips that hold the two piece mesh insert in the bumper. Shown in **Figure 29**.
34. Remove the back side of the mesh insert by lifting up the plastic hooks that secure it on the top and bottom as shown in **Figure 30**.

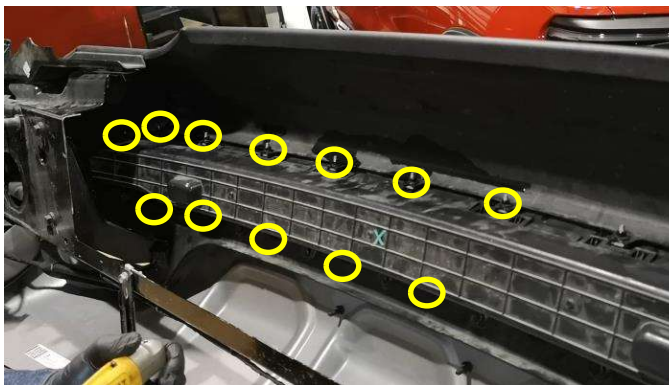


Figure 29



Figure 30

35. Remove the front side of the mesh insert by starting at one end and pulling the top side out the front of the bumper as shown in **Figure 31**.

36. Install the VICE Replacement Cover, reusing four (4) of the 8mm stock fasteners per side, as shown in **Figure 32**.



Figure 31



Figure 32

37. Remove the inside bumper mounting stud on both sides of the bumper as shown in **Figure 33**, this can be done by hitting it back with a hammer.
38. Replace the inside bumper mounting stud on both sides with the longer M12x45 Carriage Bolts provided in the hardware kit and secure with the retaining washers as shown in **Figure 34**.



Figure 33



Figure 34

39. If the 8" LED light bars were purchased, install them using the supplied black stainless button head hardware as shown in **Figure 35**.
40. If your vehicle is equipped with parking sensors, transfer them into the VICE Replacement Cover as shown in **Figure 36**.



Figure 35



Figure 36

BUMPER INSTALLATION

41. With a helper install the bumper back on the truck, being careful as shown in **Figure 37** to align the Replacement Cover with the Clutch Relocation Bearing, if the Clutch Relocation Kit was purchased.
42. Install the three (3) stock bumper mounting nuts (18mm) on both sides of the bumper and torque to **75 ft-lbs.**
43. Reconnect the front bumper wiring connection.
44. Install and tighten the Hook Anchor with the supplied stainless M12 button head and washer in the configuration shown in **Figure 38**. Also install the fairlead with hardware provided by your winch manufacturer as shown in **Figure 39**.

**Figure 37****Figure 38**

45. Tighten the Fairlead Mount that was previously left finger tight to **75 ft-lbs.**
46. If the Clutch Relocation Kit was purchased, install the clutch handle in the Relocation Bearing with the M5 set screw provided, seen in **Figure 40**.

**Figure 39****Figure 40**

47. Reinstall the lower headlight body panels along with the 10mm head screws.
48. Put the inner fenders back and install the four (4) 8mm head fasteners on either side.
49. Clip the front half of the fender flares back in place.
50. Install the lower inner fenders with the five (5) 8mm head fasteners on either side.
51. Connect your winch to the battery as per the winch manufacturer installation instructions.
52. After 100 km of driving and after the first use of the winch, check all fasteners and re-torque the hardware to the specifications previously outlined.