

2015-2018 RAM REBEL / 2019-2021 RAM WARLOCK MOD FRONT BUMPER (M00460) INSTALLATION INSTRUCTIONS



SAFETY

Your safety is extremely important to us. Working on vehicles has ever-present hazards which require precautions at all times to avoid injury or death. We've outlined some precautions to take below in order to help you make informed decisions about your safety before installing this product. This is not an exhaustive list, and you must use your own good judgment before performing any work in each step of this installation.

ALWAYS:

- wear eye protection
- use tire blocks and emergency brake
- disconnect battery(s)
- use care when moving components
- route electrical cables away from moving parts
- identify all pinch points
- wear gloves
- identify slipping and tripping hazards
- wear steel toe footwear
- understand proper use of tools before use
- work on a flat surface
- use care when lifting components
- insulate cables
- jack your vehicle from the OEM's lifting points
- torque all fasteners to suggested specs
- remove any hazards before starting on the job

LIABILITY

All liability for installation and use of this product rests with the owner. Improper installation, maintenance, and operation can result in serious injury or death as well as equipment or vehicle damage. Use this product at your own risk.



TABLE OF CONTENTS

SET UP.....	1
MOD BUMPER SET UP	2
STOCK BUMPER REMOVAL.....	4
WINCH MOUNT INSTALLATION (OPTIONAL).....	6
BUMPER INSTALLATION	9

SET UP

1. Read this entire document before performing any work.
2. Gather the tools required, outlined in **Table 1**.

Table 1

Tool List
○ Socket Set
○ Flat Head Screwdriver or Plastic Pry Tool
○ Flush Cutters
○ Impact Driver (recommended)

3. Park your RAM on flat ground, engage the emergency brake, block the tires, and disconnect the negative battery terminal.
4. Torque all 3/8" hardware to **25 ft-lbs** and all M12 and 1/2" hardware to **60 ft-lbs**.

MOD BUMPER SET UP

5. If purchased, first install the 32" light bar. With the wiring harness on the driver's side of the truck, secure the light bar into the tabs in the bumper using the hardware included with the light bar, as shown in **Figure 1**.
6. Install the tow hooks using the provided 1/2" Grade 8 hex bolts, washers, and nuts, as shown in **Figure 2**.



Figure 1

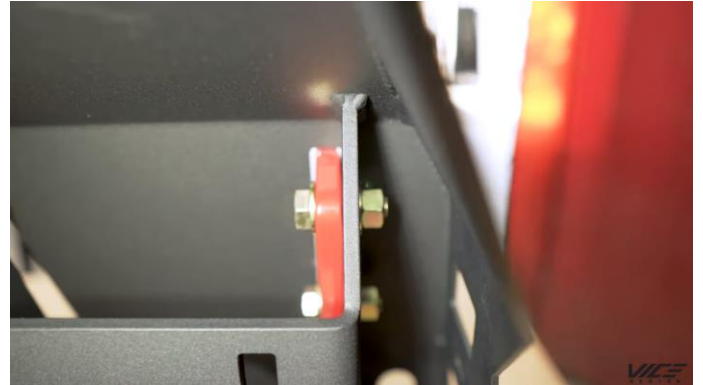


Figure 2

7. Install three 3/8" carriage bolts into each side of the bumper and retain them in place using the pushnut bolt retainers. Use a 13mm or 1/2" deep socket to secure the bolt retainers, holding the studs in place, as shown in **Figure 3**.
8. Install six M12 carriage bolts into the frame mount holes on the inside of the bumper (three on each side), as shown in **Figure 4**. Use a 21mm deep socket to secure the provided M12 pushnut bolt retainers.



Figure 3



Figure 4

9. If purchased, install the pod lights into the sides of the bumper by sliding the light and wiring harness through the front of the bumper and securing in place with the hardware included with the lights, as shown in **Figure 5**.
10. Install the sides of the bumper onto the center section by sliding the sides over the previously installed 3/8" studs and secure with 3/8" nuts and washers, as shown in **Figure 6**. Leave the nuts hand tight for now to allow for easier adjustability once the bumper is installed on the truck.
11. If purchased, install the 6" round lights into the top of the bumper, using the hardware included with the lights.
12. If purchased, install the bulbar using six 3/8" stainless steel button head screws and secure in place with 3/8" nuts and washers, as shown in **Figure 7**.



Figure 5



Figure 6



Figure 7

STOCK BUMPER REMOVAL

13. Disconnect the negative terminal from the battery, remove the inner fender liner, and disconnect the fog light harness from the bumper.
14. Remove the three 18mm head nuts holding the bumper to the frame. Two nuts are shown in **Figure 9**, the other is on the other side of the frame mount. Repeat for the other side.

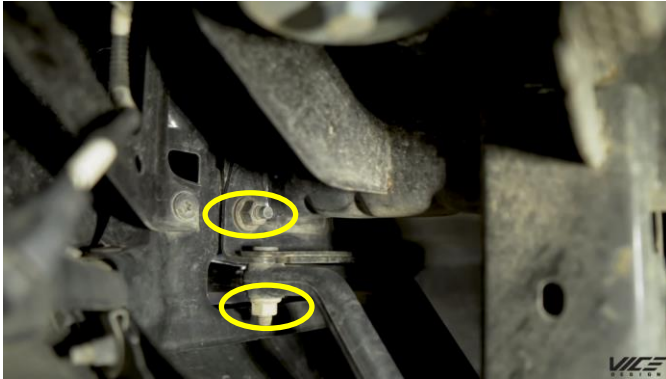


Figure 8



Figure 9

15. Slide the bumper off the truck and set aside. Using an 18mm socket, remove the factory tow hooks, as shown in **Figure 9**.
16. If the fog light kit was purchased, unplug the factory fog lights and remove the factory fog light harness from the bumper using a combination of prying the clips off and cutting any zap straps. Set aside the factory harness, as it will be reused to wire the new fog lights.

WINCH MOUNT INSTALLATION (OPTIONAL)

17. Install the two provided brackets onto the frame using the 18mm head bolt that was previously holding the factory tow hook in place. Ensure the brackets are oriented as shown in **Figure 10**, with the vertical rectangular slots facing towards the center of the vehicle.
18. Install the winch plate in between the two frame brackets and secure in place with the provided M12 carriage bolts and flange nuts. Leave the bolts hand tight for now to allow for adjustability after installing the bumper on the truck.



Figure 10



Figure 11

19. Install the selected winch as per manufacturer's instructions. If purchased, install the control box relocation kit using the provided instructions.

BUMPER INSTALLATION

20. If any lighting options were purchased, install the provided wiring harnesses onto the lights now.
21. For the fog lights, first connect the wiring harness on the fog light to the provided fog light adapter, then to the male end of the anti-flicker module ensuring the polarity of the wires is correct. The female end of the anti-flicker module will then plug into the original factory harness. Ensure the plug shown in **Figure 12** is on the driver's side of the bumper.



Figure 12



Figure 13

22. Slide the bumper onto the factory frame mounts, aligning the previously installed carriage bolts and secure with the provided M12 flange nuts. Adjust the fitment of the bumper before tightening the M12 frame mount nuts and the 3/8" nuts on the sides of the bumper.
23. Remove the bolt and fender washer from the body mount shown in



Figure 14, then install the provided support bracket

using this bolt and a provided 3/8" carriage bolt, nut, and washer, as shown in



Figure 15.



Figure 14



Figure 15

24. If running a winch, spool some rope through the fairlead and install the fairlead onto the bumper using the hardware included with the winch.
25. Ensure proper fitment of the winch plate, then tighten the M12 nuts on the winch plate.
26. Finish wiring the winch by connecting the red power cable to the positive terminal of the truck's battery, then connect the black ground cable to the negative terminal.
27. On trucks without parking sensors, install the provided plugs to cover up the holes in the bumper.
28. After 100 km (60 miles) of driving and after first use of the winch, check all fasteners and re-torque to previously outlined specifications.