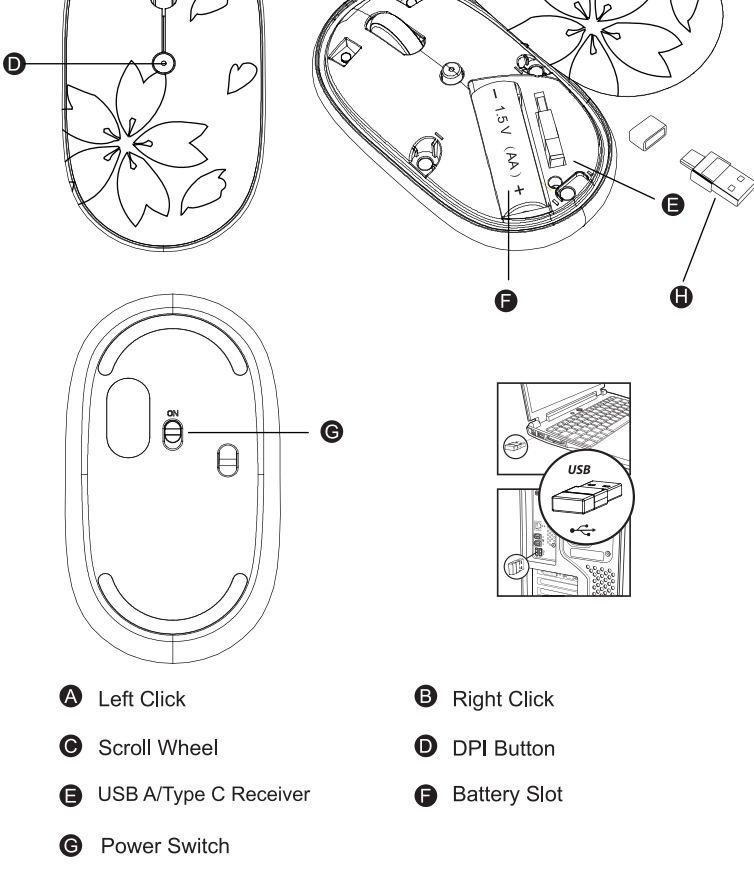
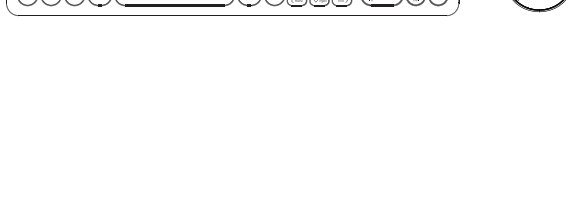


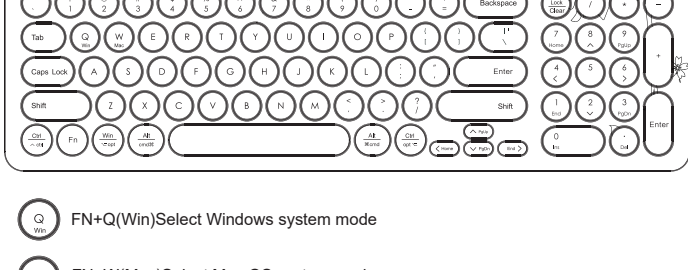
# User Manual

## 2.4G Wireless Keyboard and Mouse Combo

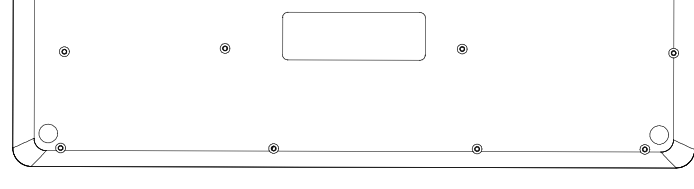
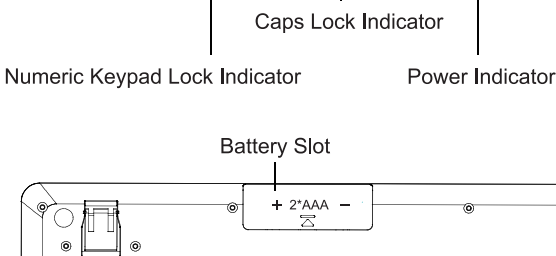
### US QWERTY Layout



- A** Left Click
- B** Right Click
- C** Scroll Wheel
- D** DPI Button
- E** USB A/Type C Receiver
- F** Battery Slot
- G** Power Switch



- Q** FN+Q(Win) Select Windows system mode
- W** FN+W(Mac) Select Mac OS system mode



### 2.4G Connection Steps

- Open the battery cover at the bottom of the keyboard, insert 2 AAA batteries and then close the battery cover.
- Open the cover of the mouse, insert 1 AA battery, take out the USB receiver, switch the power switch to ON and close the battery cover.
- Insert the USB A/Type C Receiver into the computer USB port.

### Multimedia Keys

Key	Windows	Mac OS
+Fn	Fn lock/unlock	Fn lock/unlock
	Mute	Mute
	Volume -	Volume -
	Volume +	Volume +
	Previous track	Previous track
	Play / Pause	Play / Pause
	Next track	Next track
	Brightness decrease	Brightness decrease
	Brightness increase	Brightness increase
	Screenshot	Screenshot
	Search	Search
	Application switching	Application switching
	Back to Desktop	Back to Desktop
	Lock screen	Lock screen

**Note:** You need to press the “Fn” and “F1-F12” keys at the same time to make these multimedia keys work.

### Product Parameter

#### Keyboard Product Parameter

Model No	KMCS01-1
Compatible Operating System	Windows 7 and above; MAC OS X 10.10 and above
Battery	2 AAA batteries
Sleep Time	Enter sleep mode after 30 minutes of inactivity
Operating Distance	Within 8 meters
Key Life	3 Million strokes Test
Wake Up Way	Press any key
Working Current	≤8mA
Product Dimension	384*142.5*18.5 mm

#### Mouse Product Parameter

Model No	KMCS01-2
FM mode	GFSK
DPI	800-1200 (default) -1600
Sleep Time	Enter sleep mode after 15 minutes of inactivity
Battery	1 AA batteries
Key Life	3 Million strokes Test
Wake Up Way	Press any key
Operating Distance	Within 8 meters
Working Current	≤8mA
Product Dimension	110*150*57 mm

### Sleeping Mode

- When the keyboard is not used for over 30 minutes, it will automatically enter the sleep mode, and the indicator light will be off. If you want to use the keyboard, press any key then it will be waken up within 3 seconds. The indicator light will be on.
- When the mouse is not used for over 15 minutes, it will automatically enter the sleep mode, and the indicator light will be off. If you want to use the mouse, press left or right click, then it will be waken up within 3 seconds and the mouse is ready to work.

### Package Contents

- 1 x Wireless Keyboard
- 1 x Wireless Mouse
- 1 x User Manual
- 1 x USB A/Type C Receiver

### Company Information

Mytrix Technology LLC  
 Customer Service: +1-978-496-8821  
 Email: [cs@mytrixtech.com](mailto:cs@mytrixtech.com)  
 Address: 13 Garabedian Dr. Unit C, Salem NH 03079  
[www.mytrixtech.com](http://www.mytrixtech.com)