

PlusFloor®

Installation Guide

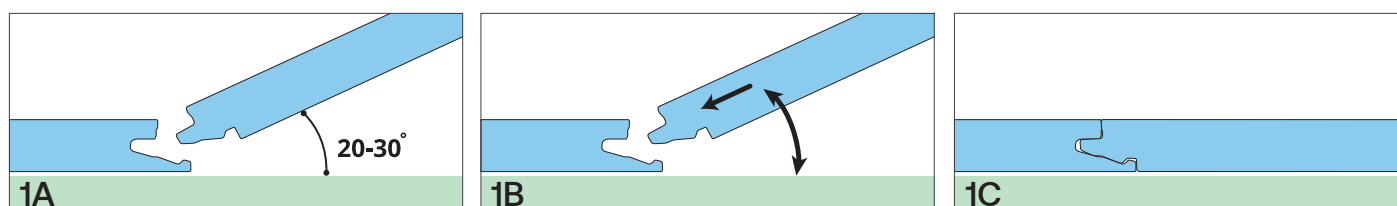
Elements Plank



General

Elements is a revolutionary system for installing laminate floors without using glue. The panels can be clicked together simply, thanks to the ingenious shape of the tongue and groove. Elements is unique because you can install the planks in two different ways:

Method A: Position the panel to be installed at an angle of 20 to 30° to the panel already installed. Move the panel gently up and down while exerting forward pressure. The panels will automatically click into place. You can either insert the tongue into the groove, or the groove on to the tongue. The tongue into the groove is the easiest method. (See diagrams 1A – 1B – 1C.)



Method B: Elements you can also tap the panels into each other without lifting. For this method you must use the special Elements tapping block. The planks should not be joined with a single tap. To avoid damaging the panels you must tap them together gradually (See diagrams 2A – 2B.)



TOOLS REQUIRED FOR FLOOR INSTALLATION

For optimal results, it is imperative to adhere precisely to the installation guidelines. In addition to the standard tools used for laminate floor installation, such as a hammer, saw, pencil, and measuring tape, you will also require the following accessories:

- An installation kit (comprising a crowbar, spacers ranging from 1 to 8 mm / 0.039"- 0.315", and a tapping block adapted for Elements)
- An underlayment system
- Maintenance products

Please note that using accessories other than those provided by Area Floors may result in damage to the Area Floors flooring. In such instances, the warranty offered by Area Floors will become void. It is highly recommended to exclusively utilize Area Floors accessories, as these have been purposefully designed and tested for compatibility with Area Floors floor panels.

During installation, you will likely need to cut some flooring panels. For a clean cut, ensure that the pattern side is facing downward when using a jigsaw, sabre saw, or circular handsaw, and facing upward when employing a handsaw or crosscut saw.

Nine Key Considerations

1. Thanks to the Elements Click system, the floor remains adhesive-free and can be walked on during and immediately after installation.
2. Elements panels grant you the flexibility to choose your starting point. Contemplate the most convenient approach for installing the floor. In our demonstration, we will guide right-handed individuals to work from left to right, but you may opt for the opposite direction if desired.
3. It's crucial to mix the panels thoroughly during installation to avoid clustering of identical, light or dark panels side by side.
4. Inspect all panels in natural light before and during installation. Never use defective panels.
5. Ideally, install the floor parallel to the direction of natural light in the room. Optimal conditions are at a temperature of 15-20°C (59-68°F) and a relative humidity of 50-60%.
6. Allow the planks to acclimate for 48 hours in unopened packaging at room temperature in the middle of the room where the floor will be installed.
7. Room humidity can fluctuate with the seasons, so it's vital to provide room for expansion and contraction. Ensure a minimum expansion joint of 8 to 10mm (5/16" to 3/8") on all sides of the floor, around pipes, thresholds, and under doors.
8. For large rooms, add expansion joints every 13m (40 feet) width-wise and length-wise. It's advisable to include an expansion joint between different rooms, such as under a door. Finish expansion joints with a molding attached to the subfloor.
9. Ensure that the end joints of panels in two successive rows are not aligned. Maintain a staggered arrangement with at least 15cm (6 inches) between joints.

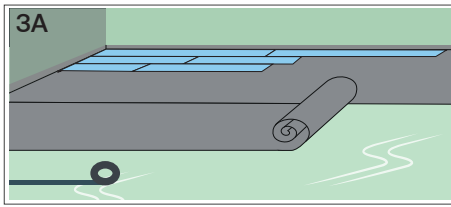
Preparing the Room

1. Verify that doors can still open and close after installing the floor and underlayment, leaving at least a +1cm (3/8") clearance.
2. Assess the feasibility of removing the old molding. Alternatively, retain the wall base and finish the floor with Area Floors profiles.
3. Ensure the subfloor is level. Smooth out any irregularities exceeding 2mm (1/16") over a 1-meter (40") length. Use an underlayment designed for this purpose, as Area Floors underlayments offer moisture resistance, insulation, noise reduction, and leveling properties. The smooth top surface facilitates the installation of laminate panels. You can find further information about Area Floors underlayments and their installation on the packaging or at your dealer.
4. Confirm that the subfloor is clean and dry.

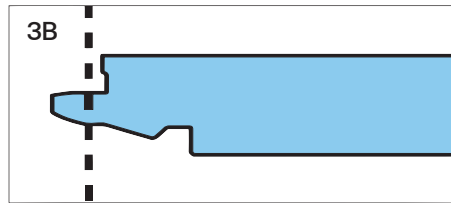
WOODEN SUBFLOOR:

1. Start by removing any existing floor covering.
2. Ensure the wooden plank floor is stable. Secure any loose components and apply a leveling layer (e.g., Area Floors Softboard) if needed.
3. Install Elements panels perpendicular to the existing subfloor direction.
4. Adequate ventilation of the crawl space beneath the plank floor is essential. Remove obstructions and provide sufficient ventilation, with a minimum of 4cm (1-1/2") of total ventilation holes per meter (40") of floor. The wood's moisture content must not exceed 12%.

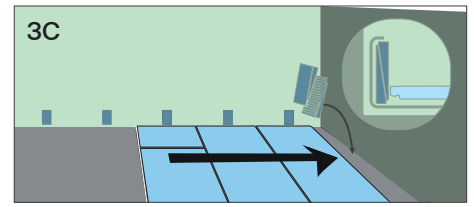
Installation Process



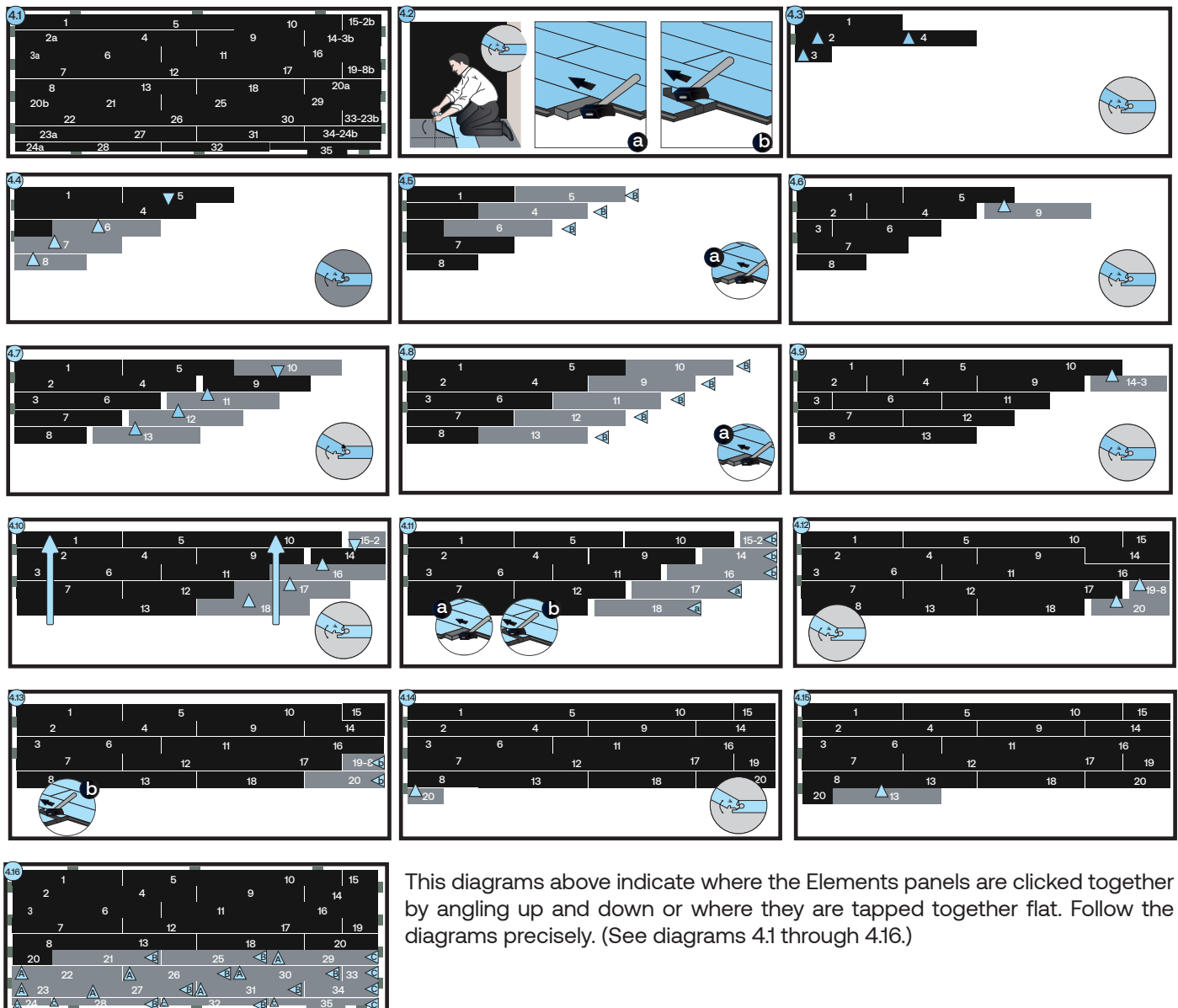
First install the underlayment, per width and gradually as you progress. If the underlayment is pre-mounted on the panels, then only use the damp-proof moisture barrier with adhesive tape. Let the membrane run up the wall a bit before cutting to size. A molding will be attached to this later. (See diagram 3A.)

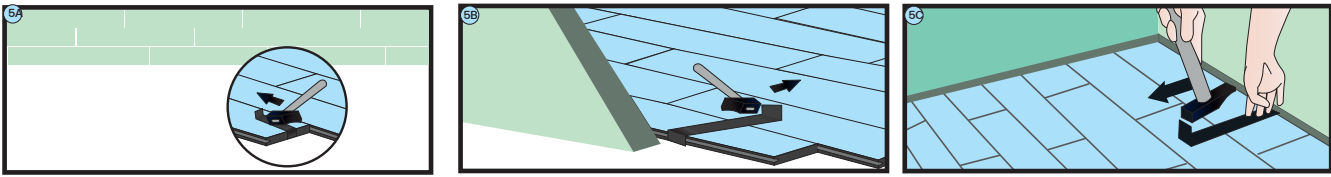


Begin the first row with a whole plank. First saw off the tongue on both the long and the short sides. (See diagram 3B.)

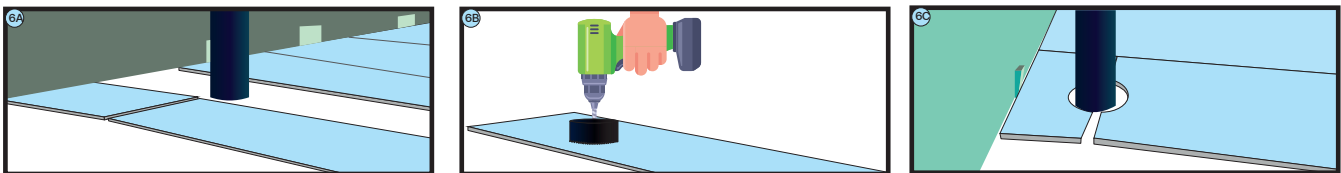


Put the plank with the sawn off sides against the walls. Put spacers from the installation kit between the planks and the wall. This will ensure that your expansion joint is wide enough: 8 to 10mm (5/16" to 3/8"). (See diagram 3C.)



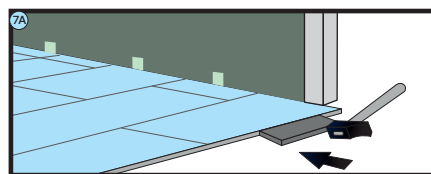


- In places where it is too difficult to install the Elements planks with the tapping block (e.g. against the wall), you can tap them to-gether using the pull bar and a hammer. (See diagrams 5A – 5B - 5C.)
- There must also be an 8 to 10mm (5/16" to 3/8") expansion joint between the last row and the wall. Keep this in mind when sawing the last row of panels.



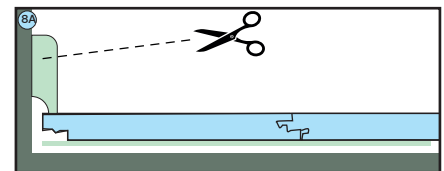
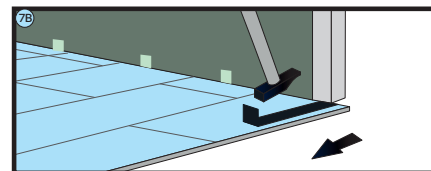
Pipes

In rows where there is a pipe, make sure the pipe falls exactly in line with the short side of two panels. Take a drill bit with the same diameter as the pipe plus 20mm (3/4") for the expansion. Click the panels together on the short side and drill a hole in the center of the joint between the two panels. Now you can install the panels in the floor. (See diagrams 6A-6B-6C.)



Under doorframes

When sawing the panels, ensure that the expansion joint under the door is at least 10mm (3/8"). If you cannot lift the panel, use an adapted tapping block or pull bar and hammer to tap the panels together with the planks flat on the floor. (See diagrams 7A-7B.)



Remove all spacers.

Install the molding on the plastic membrane that runs up the wall from under the floor. Never attach the molding to the floor. This method allows the floor to expand and contract under the molding. For a perfect finish around pipes, use rosettes or caulking.

In places where profiles or skirting cannot be placed, fill expansion gaps with caulking. (See diagram 8A.)

Precautions

1. Furniture and chair legs should be safeguarded with appropriate felt or plastic caps.
2. Prevent the tracking of dirt, water, and sand indoors by placing a suitable floor mat at the entrance.
3. When using (office) chairs or seating on the laminate floor, opt for those equipped with soft wheels compatible with laminate surfaces, or use a desk mat designed for this purpose.
4. Maintain a minimum room humidity level of 50% at all times. If necessary, employ a humidifier to achieve this.

Maintenance

1. The smooth surface of your laminate flooring does not retain dirt or dust.
2. Never apply wax or varnish coatings to the floor.
3. For routine dry maintenance, we recommend using an Area Floors duster (flipper) or a vacuum cleaner.
4. For slightly damp cleaning, consider using Area Floors Quick Clean. Dilute it with water as per the instructions and apply it to the Area Floors duster. Please refrain from using other cleaning products as they may harm your floor. Always wipe the floor dry immediately until there is no visible moisture. We strongly advise dry cleaning for products with beveled edges.
5. Wet cleaning is strictly prohibited. Any spilled water should be promptly removed. Elements panels are not suitable for use in damp environments like saunas.
6. To effectively tackle stubborn stains, exercise caution and use Area Floors Force or an acetone-based nail polish remover. Never use abrasive scouring products!

INSTALLATION AND WARRANTY

All PlusFloor floors should be installed by a skilled and competent installer who will consider the unique circumstances of each site. The PlusFloor warranty will be applicable only to floors that have been installed by a competent flooring installer conforming to the standards comparable to BS8201 in the UK or an equivalent standard worldwide.

© This installation guideline sheet has been prepared by PlusFloor, located at Carnforth Business Park, Oakwood Way, Carnforth Lancashire LA5 9FD. All information provided in this sheet is accurate at the time of writing and publication. The photographs included in this sheet are solely for illustrative purposes, and no rights can be derived from them.

Plusfloor Unit 11,
Carnforth Business Park,
Oakwood Way, Carnforth,
LA5 9FD
Tel no. +44(0)1524 481 118
Fax. +44(0)1524 481 171
info@plusfloor.com
www.plusfloor.com

PlusFloor®

01524 481 118
info@plusfloor.com
plusfloor.com

London Showroom
23 Pear Tree Street,
Clerkenwell, London,
EC1V 3AP

Innovation + Distribution Centre
11 Oakwood Way
Carnforth Business Park
Carnforth, LA5 9FD