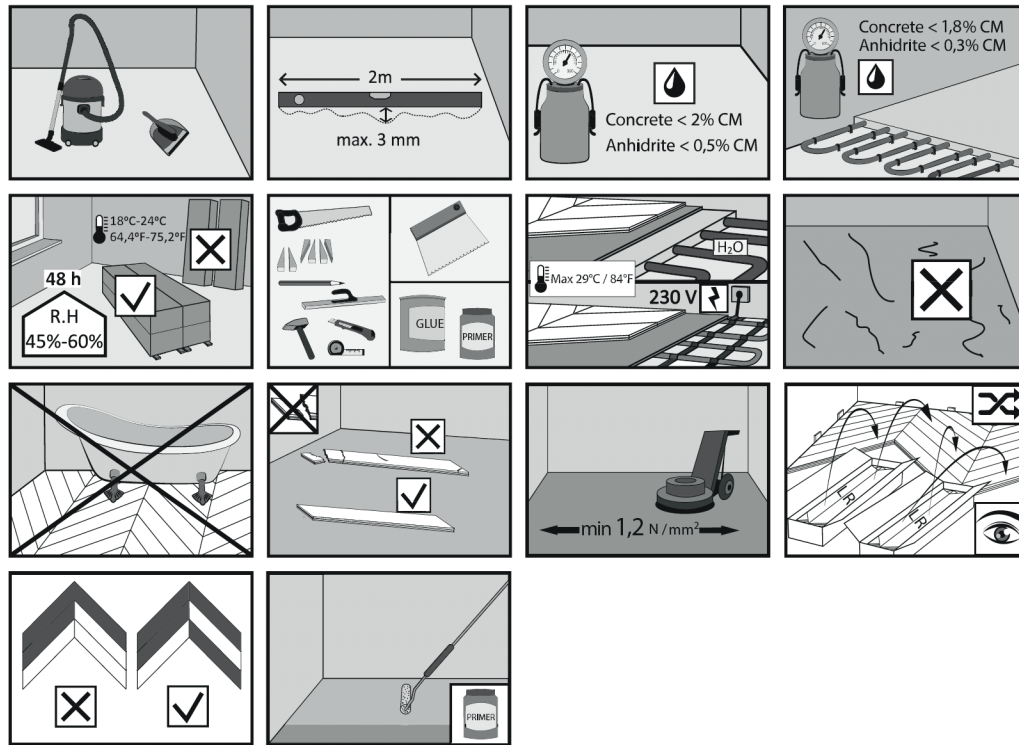




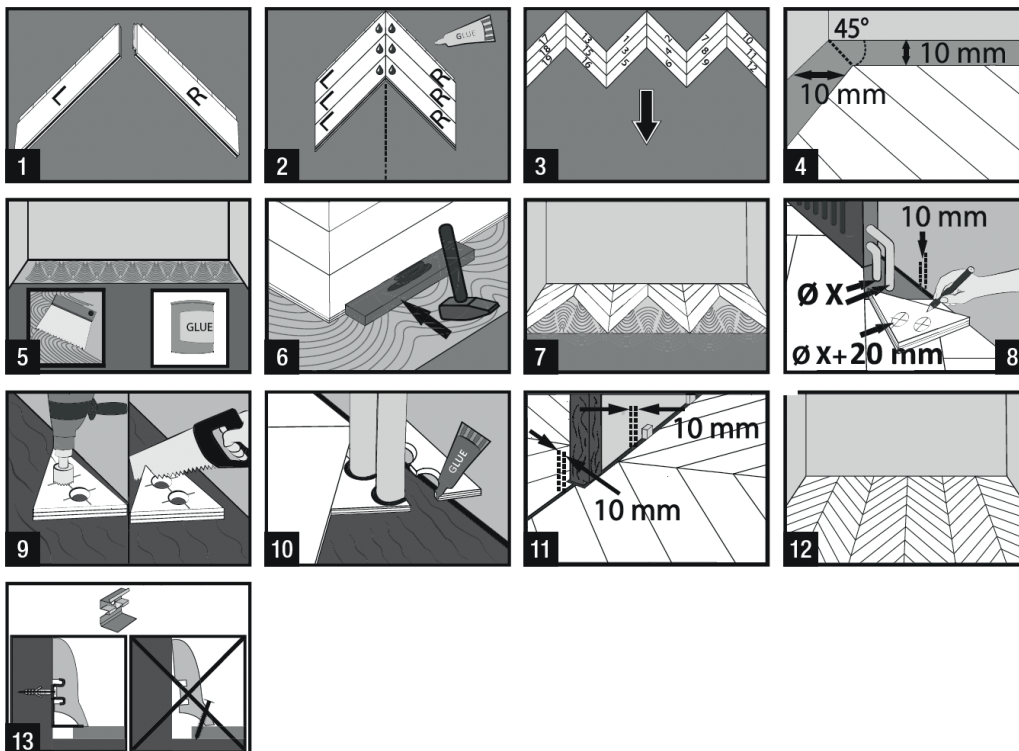
# HARDWOOD FLOOR STORE

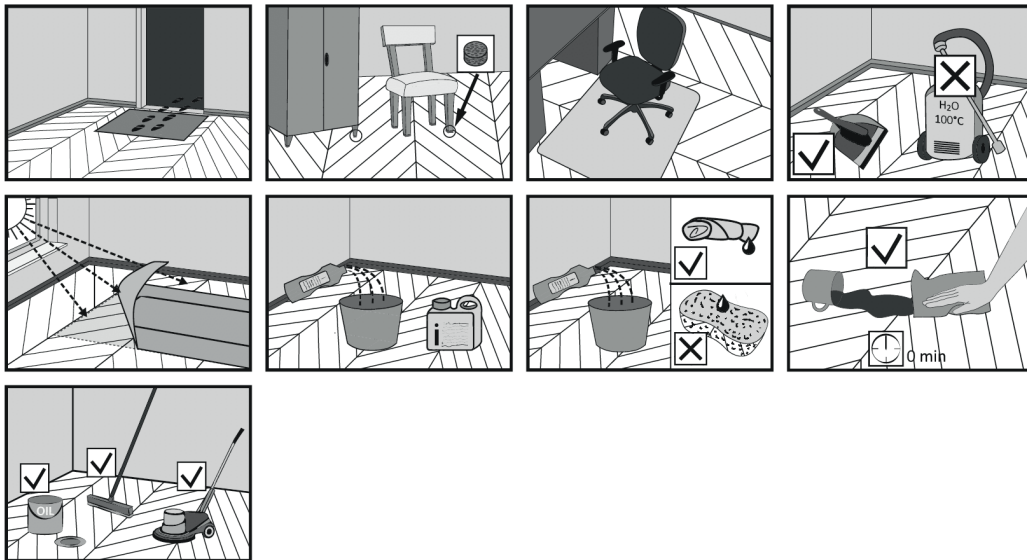
ASHTON & ROSE  
CHEVRON INSTALLATION GUIDE

PREINSTALLATION



TONGUE & GROOVE



**CAUTION!****ATTENTION!**

The installation of glue-down hardwood flooring should be done by a professional flooring company. With a DIY installation, you run the risk of damaging the wood surface, leaving glue stains or fitting the flooring incorrectly. Use glue-down adhesives and primers designed for glue-down wooden floors. We recommend grinding the subfloor layer before beginning installation. The cement subfloor should be cleaned of calcium deposits.

**CARE:** Floorboards are factory finished with lacquer, UV or natural oil. Use original care products for all floorboards. An additional coat of care oil should be applied to floors treated with UV oil after installation. After the floor is laid it recommended be protected with Wax Care Plus. For floors finished with natural oils always use original care products: Wax Care Plus, Wash Care and Magic Cleaner.

**ATTENTION:** Before applying any third party care product be sure to test it on a concealed area of the floor to assess whether or not there is a negative reaction of oil on the floorboard (for example, discoloration or peeling). Regular care of oiled floors conceals minor wear and tear of everyday use. The greatest enemies of wooden floors are water and sand. In case of soiling of the floor, these should be carefully and gently removed.