

EB'S TRAILS

Trail Founder: EBERHARD FASS

Trails, signs and huts maintained by volunteers of the
SASKATOON NORDIC SKI CLUB

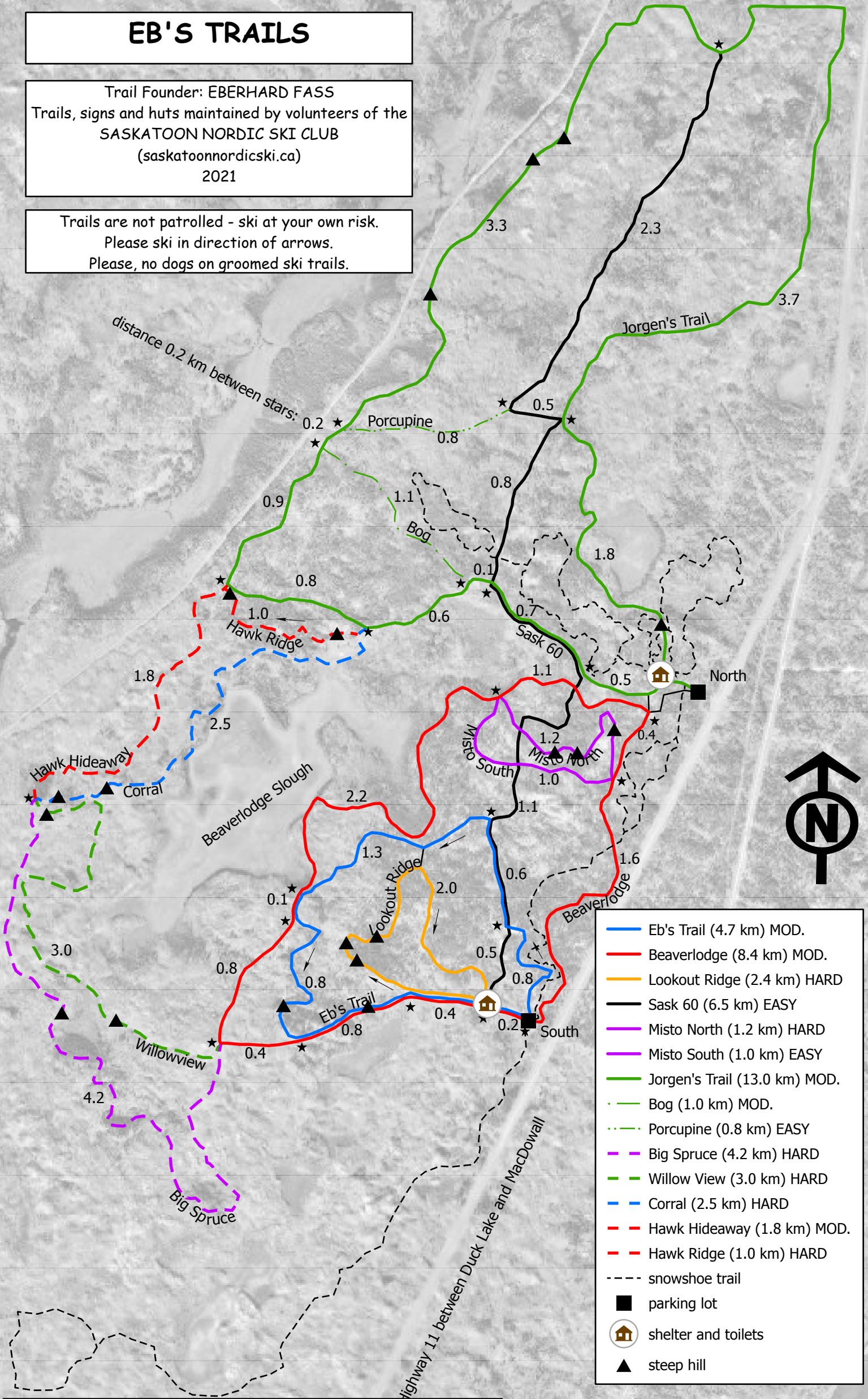
(saskatoonnordicski.ca)

2021

Trails are not patrolled - ski at your own risk.

Please ski in direction of arrows.

Please, no dogs on groomed ski trails.

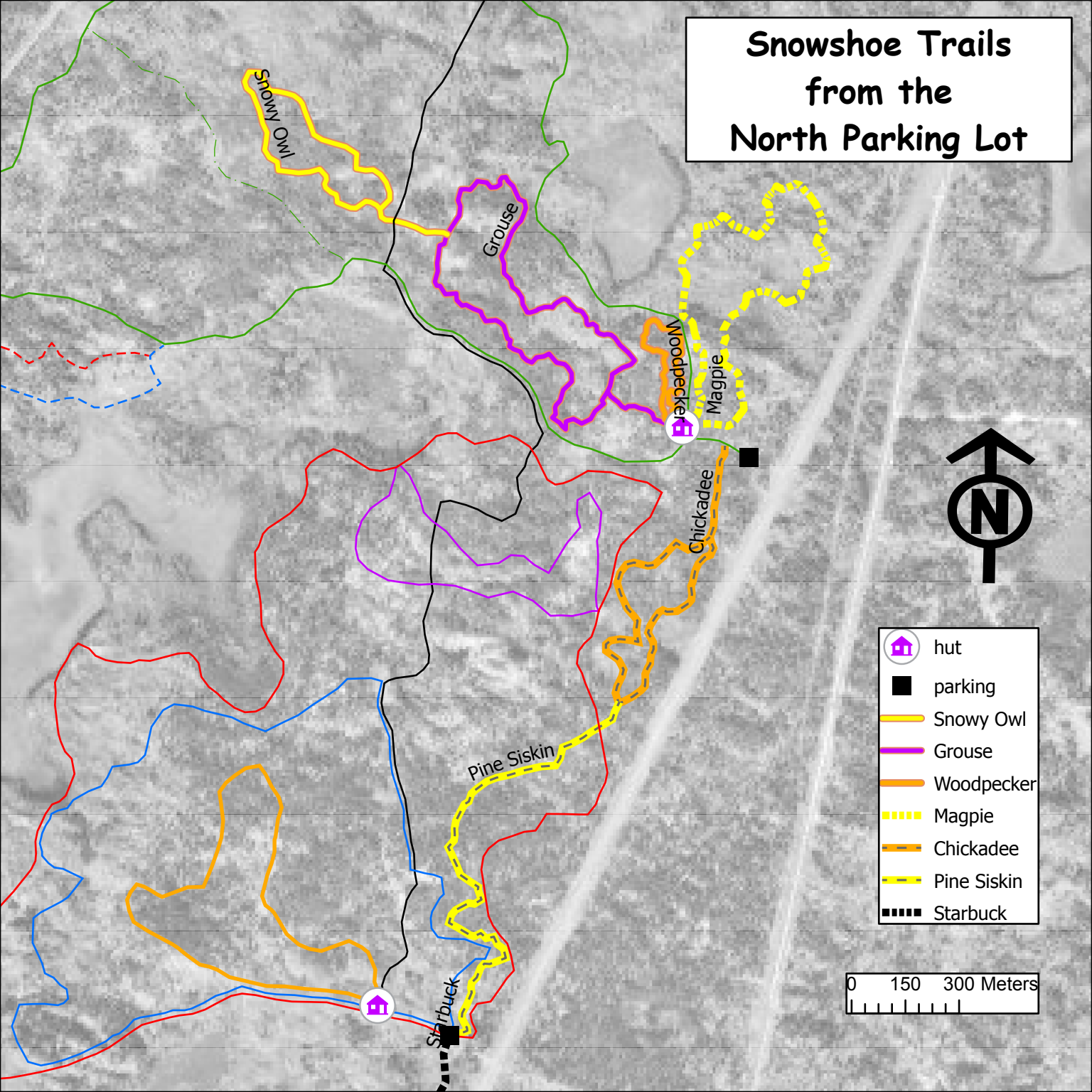


- Eb's Trail (4.7 km) MOD.
- Beaverlodge (8.4 km) MOD.
- Lookout Ridge (2.4 km) HARD
- Sask 60 (6.5 km) EASY
- Misto North (1.2 km) HARD
- Misto South (1.0 km) EASY
- Jorgen's Trail (13.0 km) MOD.
- ⋯ Bog (1.0 km) MOD.
- ⋯ Porcupine (0.8 km) EASY
- - - Big Spruce (4.2 km) HARD
- - - Willow View (3.0 km) HARD
- - - Corral (2.5 km) HARD
- - - Hawk Hideaway (1.8 km) MOD.
- - - Hawk Ridge (1.0 km) HARD
- - - snowshoe trail
- parking lot
- 🏠 shelter and toilets
- ▲ steep hill

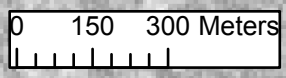


Trail maps courtesy of: Eb's Source for Adventure,
1640 Saskatchewan Ave., Saskatoon

Snowshoe Trails from the North Parking Lot







-  hut
-  parking
-  Snowy Owl
-  Grouse
-  Woodpecker
-  Magpie
-  Chickadee
-  Pine Siskin
-  Starbuck



Snowshoe Trails from the South Parking Lot



-  hut
-  parking
-  Pine Siskin
-  Starbuck

Starbuck

Pine
Siskin

0 150 300 Meters

