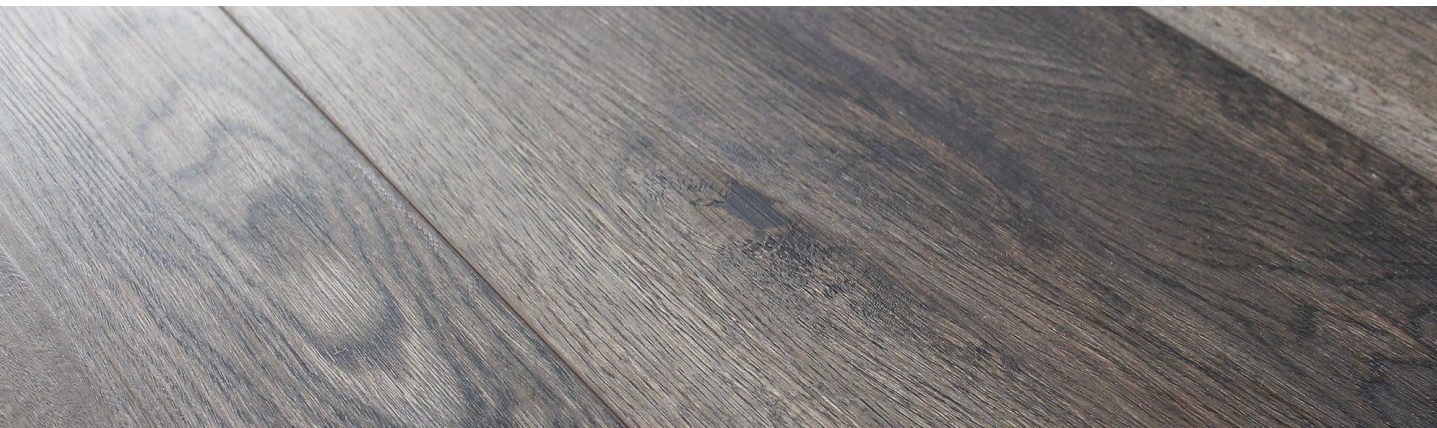


SPECIFICATIONS | NAUSICOR COLLECTION



PRAVADAFLOORS.COM

PRODUCT NAME	SAIL (7723-7245)
PRODUCT DIMENSIONS	1/4 x 9 x 60in (5.5 x 228 x 1524mm)
PRODUCT TYPE	Stone Plastic Composite (SPC)
WEAR LAYER	20mil (Commercial Grade)
PRINT VARIATIONS	3-4
LOCK SYSTEM	I4F® Drop-Lock
RADIANT HEAT APPROVED	Yes
UNDERLAYMENT PAD	1mm high-density IXPE foam
INSTALLATION METHOD	Float / Glue
EDGE TREATMENT	Painted V-Groove
EDGE FINISH	Microbeveled
SURFACE	EIR (Embossed in Register)
GLOSS LEVEL	5%
COVERAGE / BOX	22.44 SQ.FT. / 2.08 SQ.M.
CERTIFICATIONS	FloorScore® Certified
RESIDENTIAL WARRANTY	35-Year Limited
COMMERCIAL WARRANTY	10-Year Limited



DISCLAIMER: Images may vary from actual product appearance due to a number of factors such as lighting during photoshoot, monitor displays, or natural wood variations.

PRAVADA®
EVOLUTIONZTM
BETTER THAN EVER