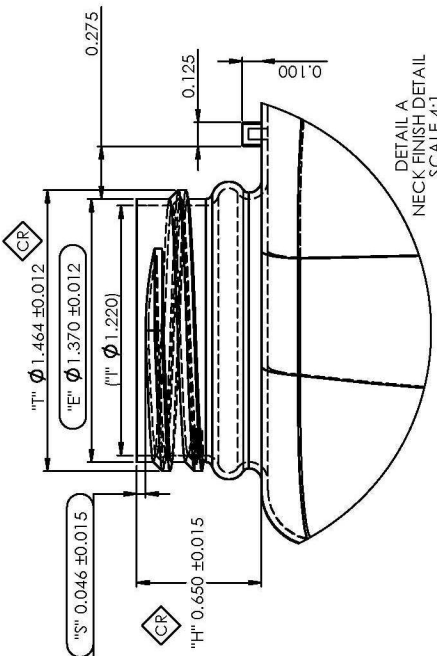
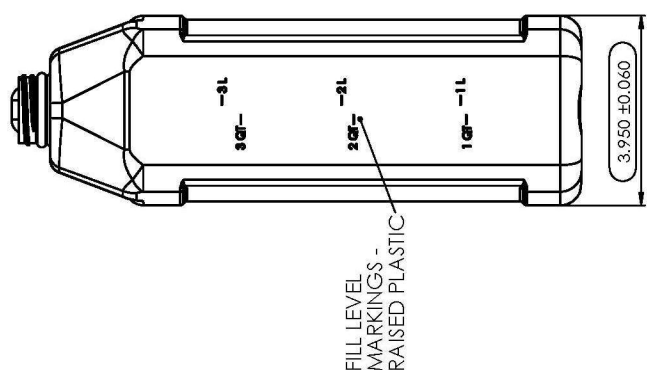


TITLE:	1 GALLON F-STYLE
DESCRIPTION:	PRODUCT DRAWING
DATE:	4/7/16
DRAWN BY:	ZMF
CHECKED BY:	
DATE:	3/8/16
SCALE:	C
SHEET:	1 OF 1
REV:	B

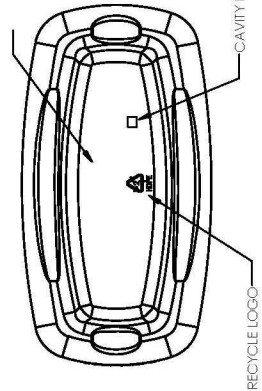
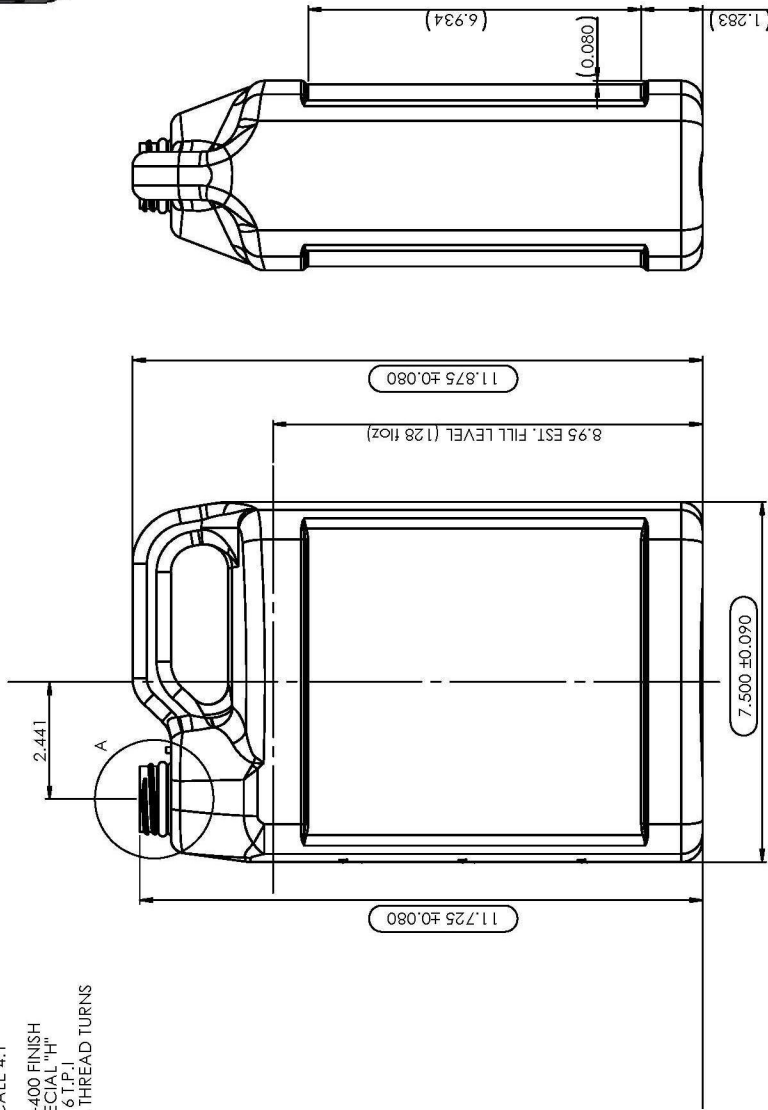
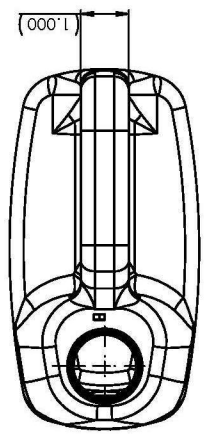


DETAIL A
NECK FINISH DETAIL
SCALE 4:1

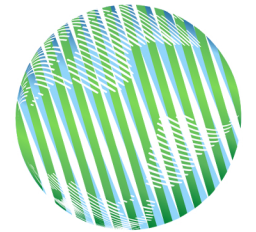
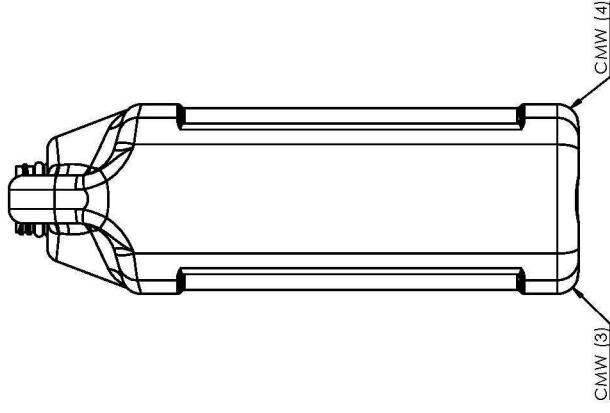
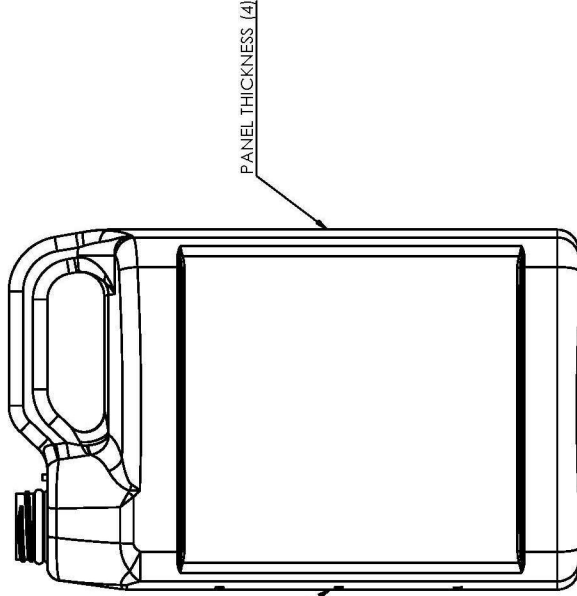
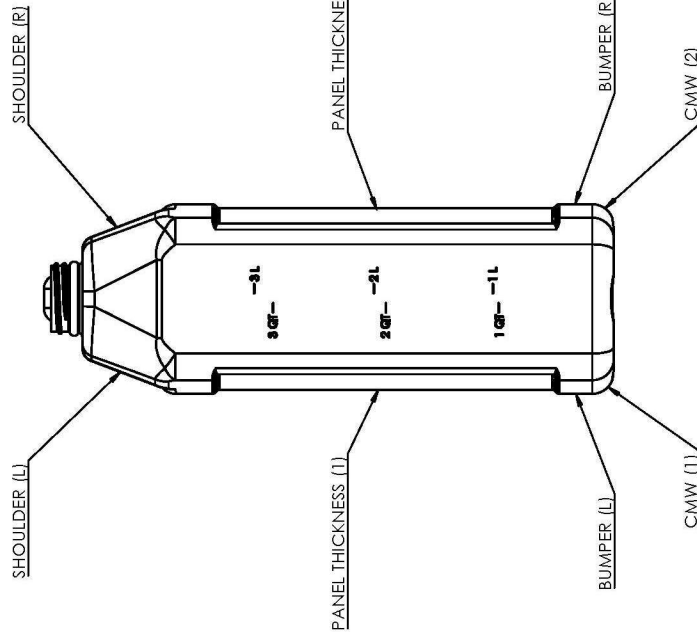
M38-400 FINISH
SPECIAL "H"
Ø T.P.J
1.25 FULL THREAD TURNS



FILL LEVEL
MARKINGS -
RAISED PLASTIC



1. DIMENSIONS OR NOTES MARKED WITH A DENOTE CRITICAL CHARACTERISTICS TO BE MONITORED
2. DIMENSIONS OR NOTES MARKED WITH A DENOTE CHARACTERISTICS TO BE MONITORED DURING PRODUCTION
3. ALL DIMENSIONS MARKED WITH SHALL BE DETERMINED BY AVERAGING THE MEASUREMENTS AT PARTING LINE AND 90 DEGREES FROM PARTING LINE
4. REFERENCE ONLY DIMENSIONS CONTAINED IN ()
5. MINIMUM CONTAINER WALL THICKNESS .015"
6. CONTAINER TOP LOAD REQUIREMENT TO BE TBD LBS. MINIMUM
7. MATERIAL: HDPE
8. TARGET WEIGHT: 140.0 GRAMS.
9. OVERFLOW CAPACITY: 140.0 FL. OZ. (EST. W/O BULGE - TO BE VERIFIED DURING QUALIFICATION) 141.7 FL. OZ. (EST. W/ BULGE - TO BE VERIFIED DURING QUALIFICATION)
10. MEASUREMENTS TAKEN 24 HOURS AFTER MOLDING.



BioVex®

DRAWN BY	ZMF	DATE	6/28/16	CHECKED BY		DATE		BY	
					TITLE: 1 GALLON STYLE				
					DESCRIPTION: WALL THICKNESS MEASUREMENT LOCATIONS				
					DRWS. NO.				
					SIZE: C				
					SCALE: 1:1				
					SHEET 1 OF 1				
					REV.				