

WILSON ANALYTICAL

Introducing the Wilson LightBox *The Versatile Spectroscopy Light Source*

Scientific-grade light sources

- High brightness, stable output, long life
- Optical-feedback output stabilization
- Pulsed, single shot, or continuous light output
- Rugged, high quality construction
- Stand-alone use or external control

Versatile Light Wavelength.

Choose from:

- Individual LED sources for 365 nm (UV), 405 nm (violet), 450 nm (blue), 520 nm (green), 850 nm (near IR) or cool or warm white light output
- Tungsten sources for broadband output through the near-UV, visible and near-IR
- MEMS-based sources for broadband output in the near and mid-IR
- Easy modification of output light with 12.5 mm round filters

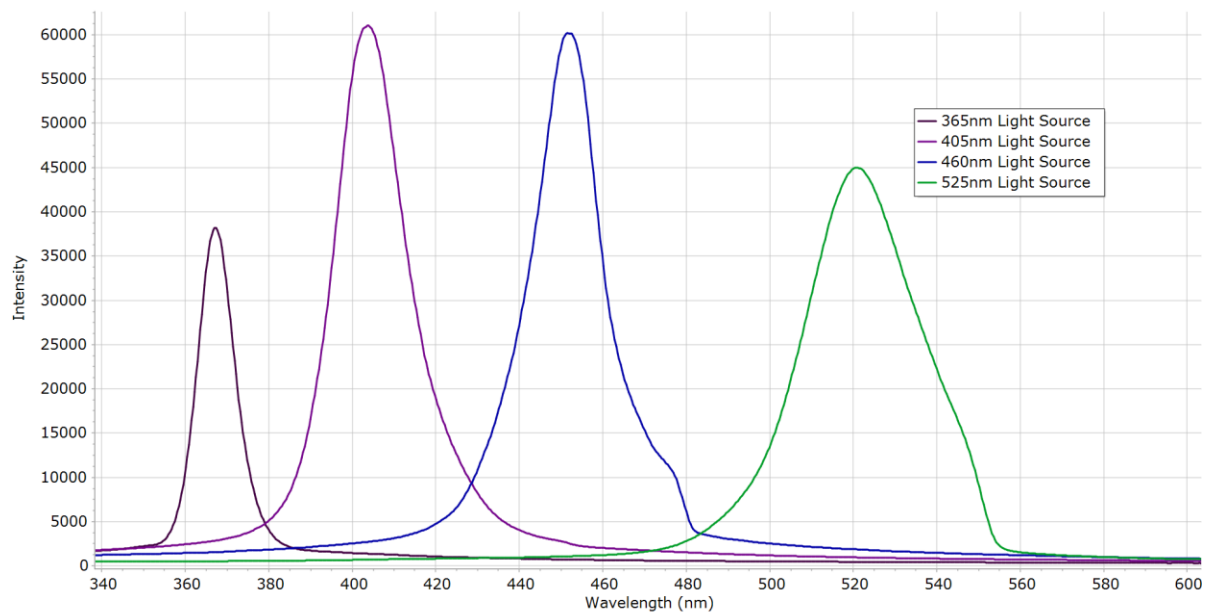
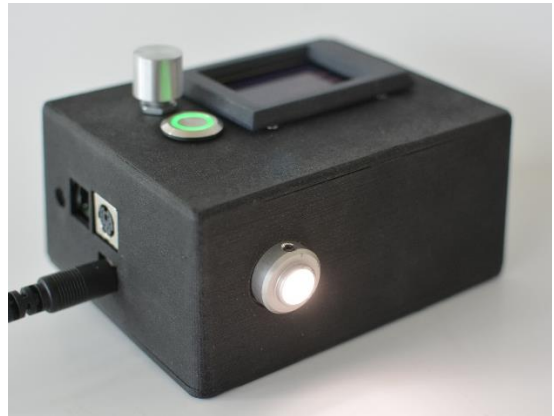


Figure 1: LED light source wavelengths

Versatile Light Control:

- Built-in software control of output level and pulsing
 - LED display of system status
 - Rotary dial for user input
- External interfaces (TTL, USB) allow output control
 - Spectrometer software
 - Labview
 - Oscilloscopes
 - Wilson Open Platform System
 - Other electronics



The Wilson LightBox

Versatile Light Output:

- Continuous, single shot or pulsed output
- Adjustable pulse frequency and duty cycle
- Pulse up to 100 Hz with full optical feedback control of output stability
- Higher pulse rates without optical feedback output stabilization
- Choice of free-space optics or fibre optic light output (SMA or FC connections)

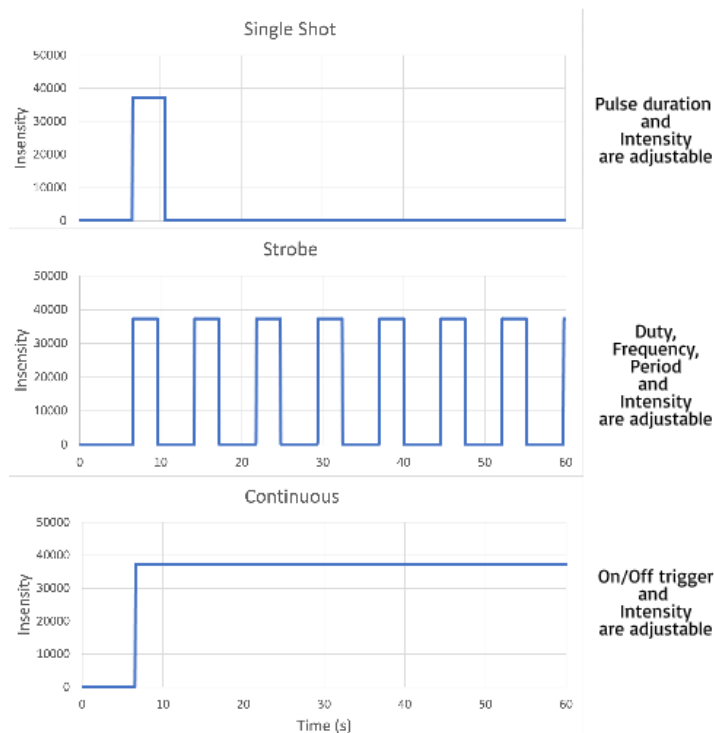


Figure 2: Light output modes include single shot output, pulsed output or continuous light output.

For more information contact:

Wilson Analytical Services Inc.

780.702.0610

info@wilsonanalytical.com

www.wilsonanalytical.com