



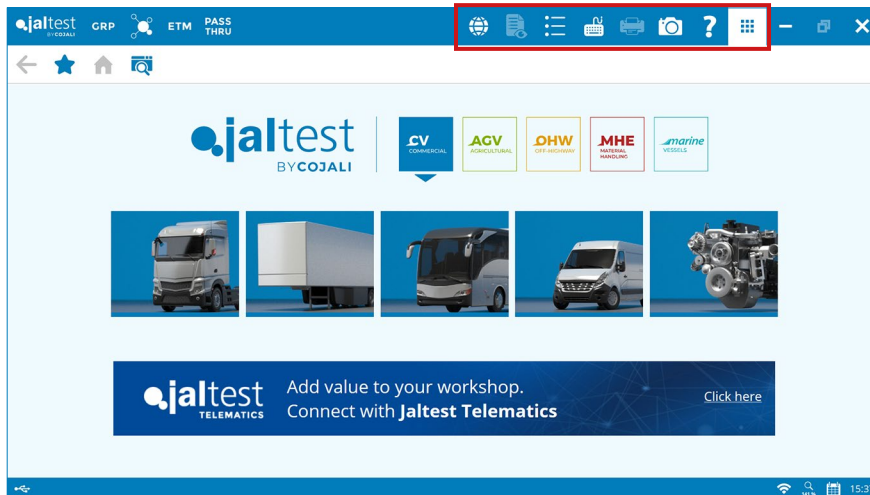
User manual

cojali

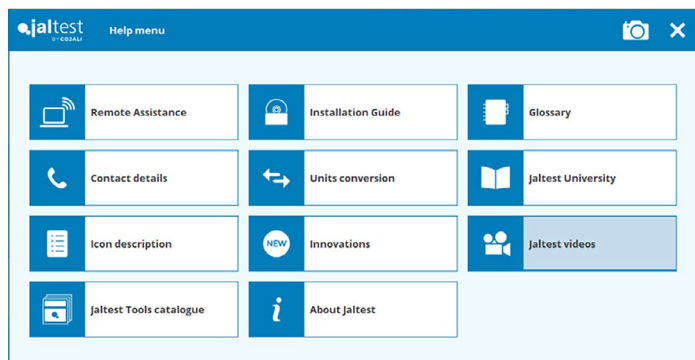
Index

1	Main Screen	4
2	Main menu	5
3	Configuration	6
4	Quick Connection (example)	10
5	Diagnostics Menu	12
6	Technical Information Menu	13
7	Additional Modules	14

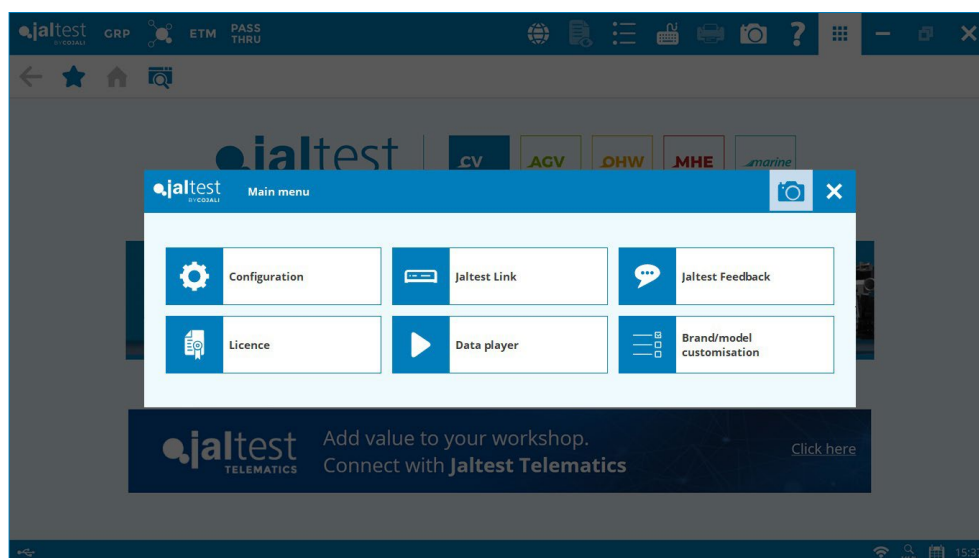
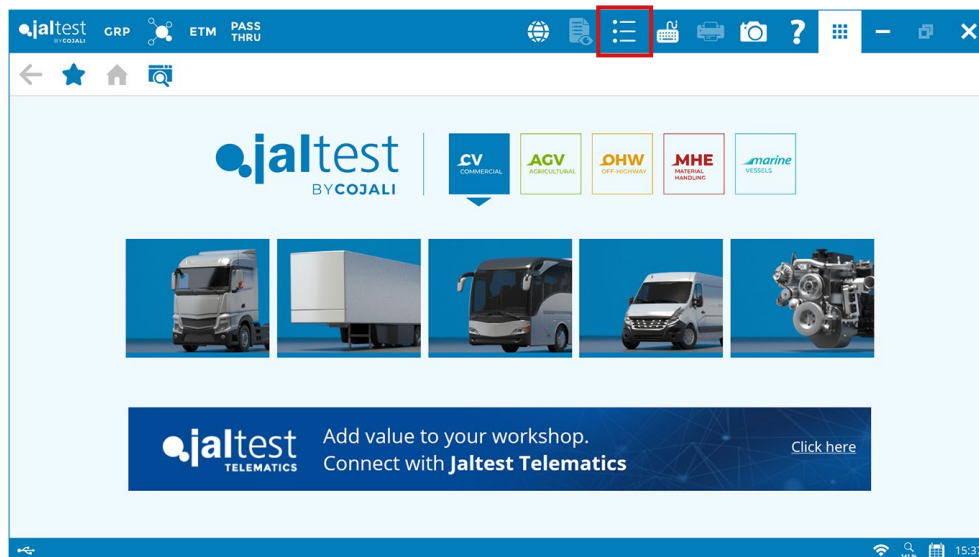
1 Main screen



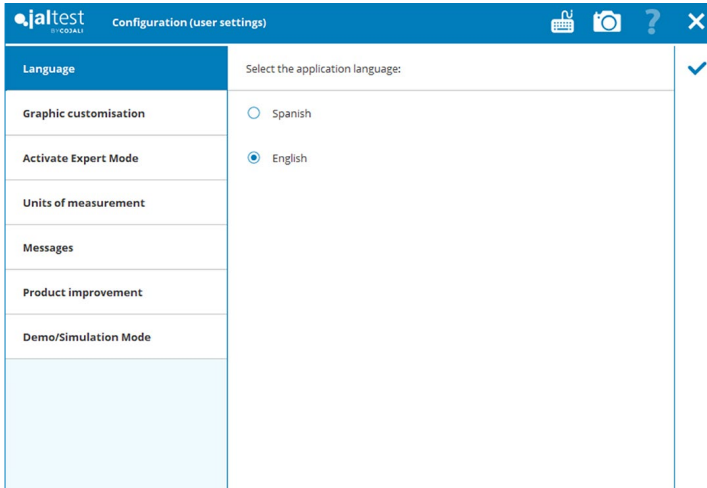
1. **Social Networks:** direct access to our social networks and Jaltest website.
2. **Report Preview:** while connecting into a system, a diagnostics report starts to be created. Anytime, clicking on the button, it can be checked, read and closed.
3. **Main menu:** list of possible configurations related to the use of the software like language, appearance, measurements...
4. **Virtual keyboard:** activation of the virtual keyboard, very useful if the software has been installed in a tablet or the laptop has a touch screen.
5. **Print:** after creating a report, it can be printed out directly through this option.
6. **Screenshot:** anytime the user needs to freeze the information for any use, a screenshot can be carried out on demand.
7. **Help Menu:** additional help and information related to Jaltest.



2 Main menu



3 Configuration



LANGUAGE

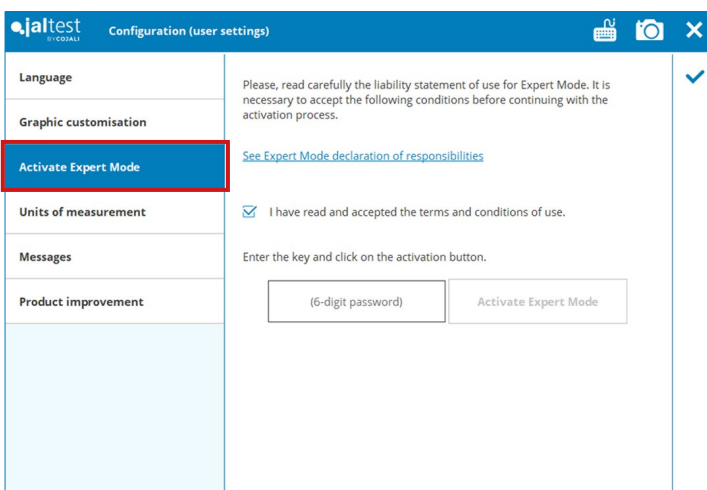
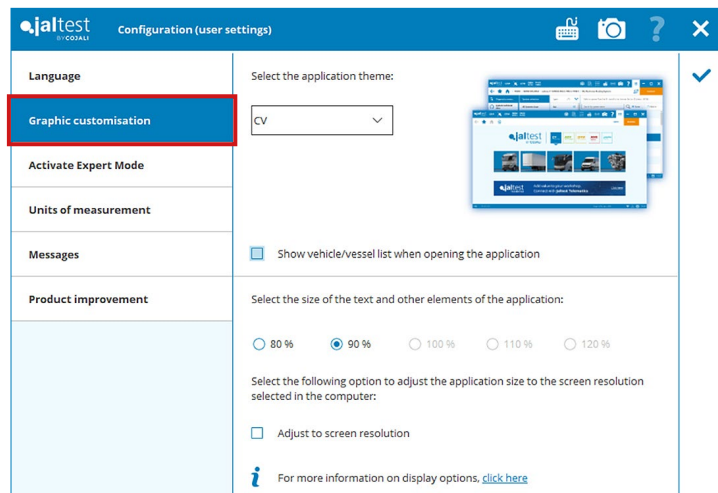
The language can be changed depending on the country where the equipment is used. The standard configuration includes two languages: English and Spanish.

However, Jaltest adapts the languages to the needs of the users.

Jaltest software is available in more than 20 languages.

GRAPHIC CUSTOMIZATION

The graphic customization allows the user to change the color and the appearance of the software: red, blue, yellow or green color, the designs of the buttons and text size.



EXPERT MODE

The activation of the Expert Mode will be necessary to carry out some special functionalities with Jaltest. Normally it is needed for functionalities which modify the current parameters or configuration of the ECU.

The acquisition of the expert code is completely free and must be done online using the user's area in www.jaltest.com

Configuration (user settings)

Language

Graphic customisation

Activate Expert Mode

Units of measurement

Messages

Product improvement

Configure the units of measurement per magnitude. The chosen options will be applied to the values and data obtained in the application:

Note: unit conversion will only be performed between units of measure located in the same row.

Pressure

bar MPa psi (lbf/in²)

mbar kPa

hPa inH₂O

Temperature

°C K °F

Disable unit conversion

SI USA

Reset values to default

UNITS OF MEASUREMENT

With Jalttest it is possible to change the units of the measurements to adapt better to every customer necessity.

MESSAGES

Reactivation of the messages previously marked as "do not show again this message".

Configuration (user settings)

Language

Graphic customisation

Activate Expert Mode

Units of measurement

Messages

Product improvement

Select the following option to display again those messages that were deactivated by using the option 'Do not show this message again'.

Activate messages

Configuration (user settings)

Language

Graphic customisation

Activate Expert Mode

Units of measurement

Messages

Product improvement

Jalttest can obtain data about the use of the program and the connection in order to send them to the software manufacturer with the aim of improving the product, the coverage and the development of the project in every new version. Thus, copies of parameters files will be sent in some of the expert mode functionalities.

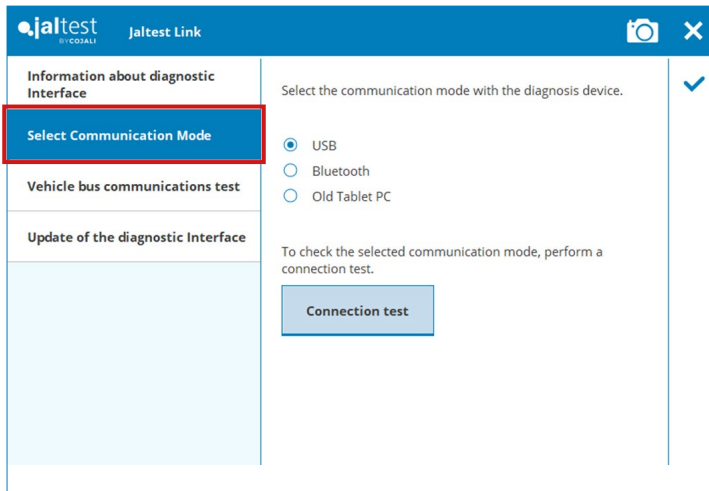
This information is encrypted and it does not contain any personal information about the vehicle owner or other persons.

[See the terms and conditions of the privacy policy](#)

I accept submission of data to improve the product. I have read and accept the terms and conditions of the privacy policy

PRODUCT IMPROVEMENT

Possibility of sending feedback to Jalttest to participate in the continuous improvement and development of the software for a better user satisfaction.

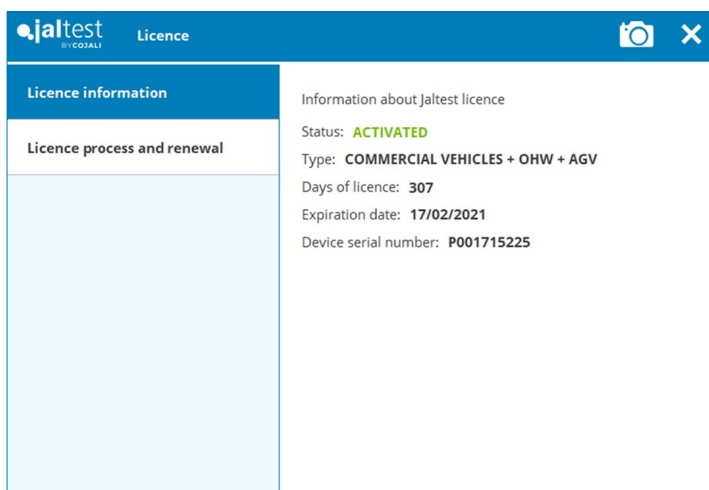
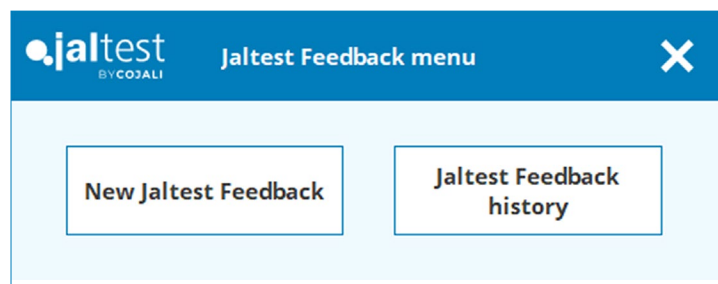


JALTEST LINK

Window to change the communication between the laptop and the link. It is possible to switch it from USB to Bluetooth or the opposite. After the change, it is recommended to process a Connection Test as confirmation.

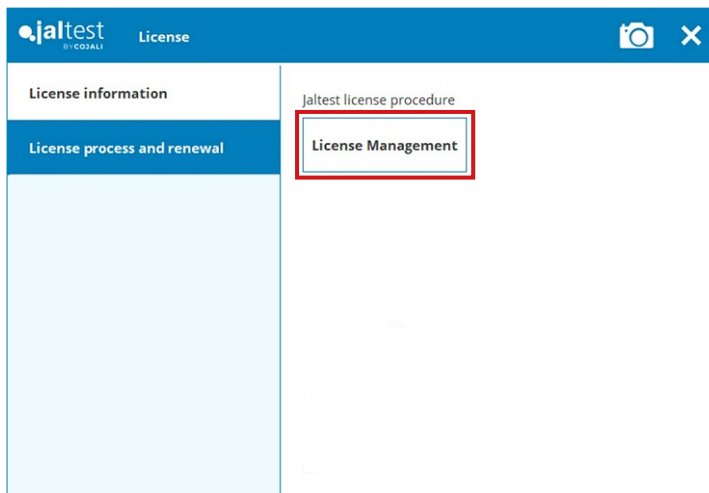
JALTEST FEEDBACK

Direct contact with Jalttest. The option of sending some feedback about problems while using the equipment or checking the records.



LICENSE

This is the button where we can update the license and to see the version of the software or the expiration date.

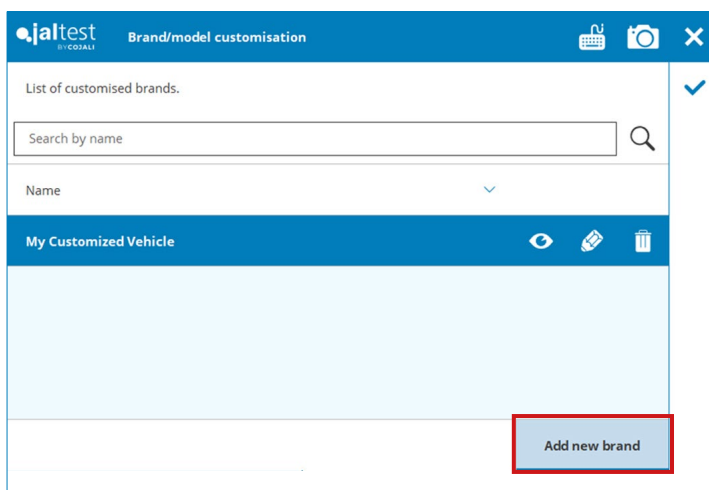
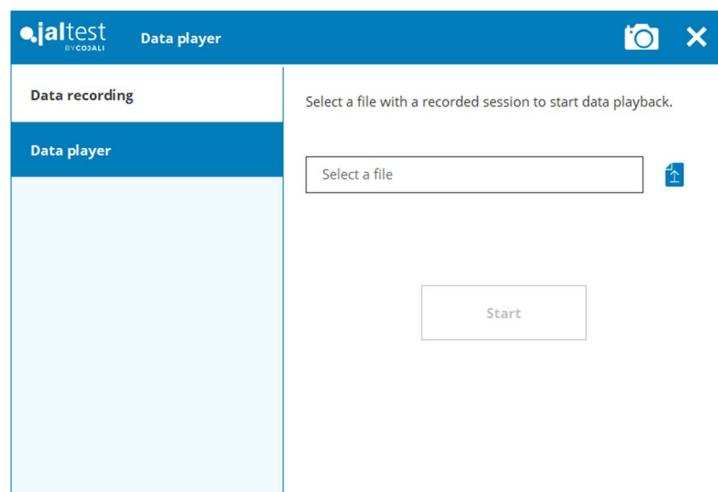


LICENSE PROCESS AND RENEWAL

Once you have renewed your license, it is necessary to click here to update the software, which will allow you to continue working with Jalttest with your new license.

DATA RECORDER

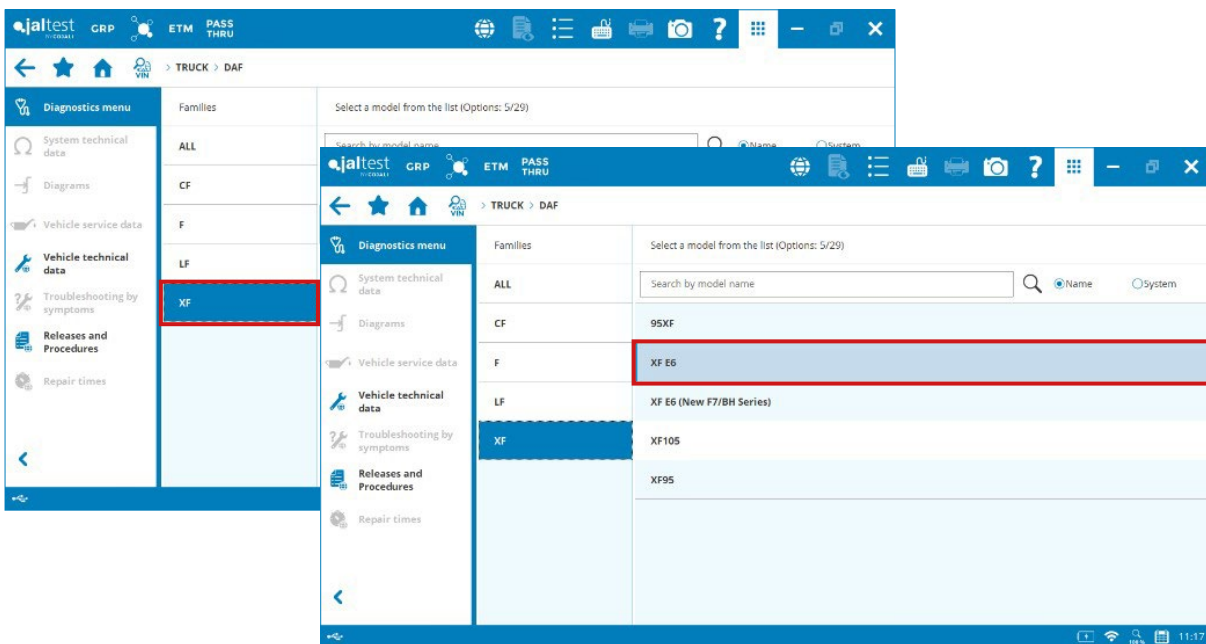
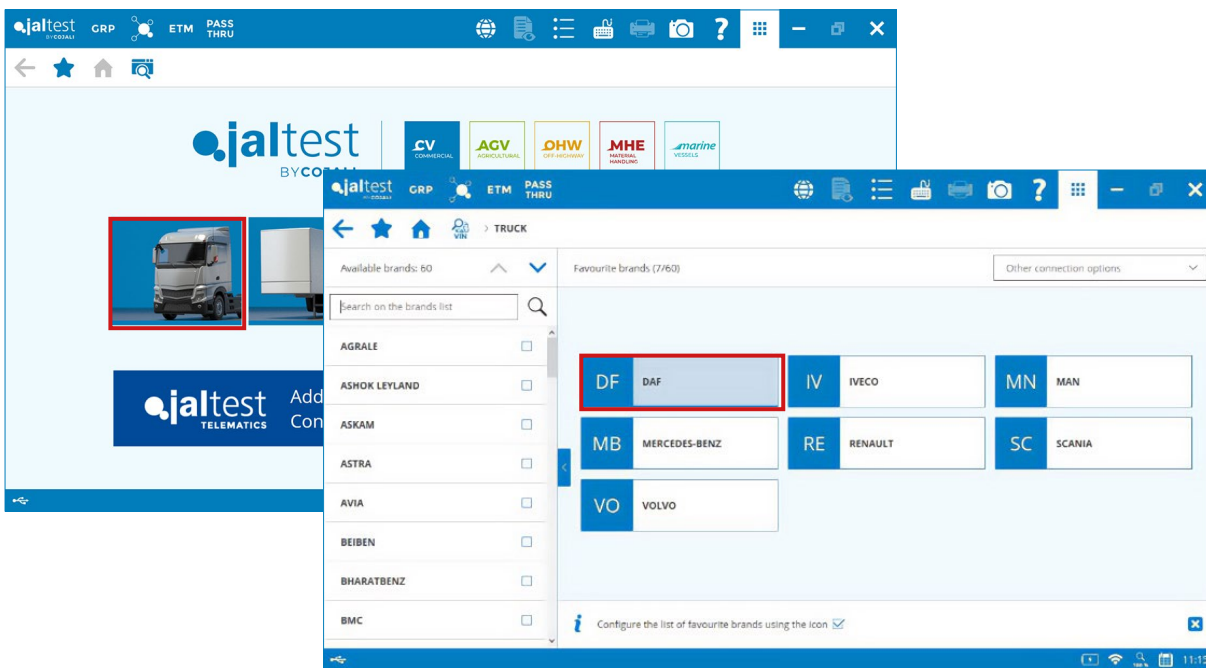
After recording the data in a diagnostics session for a maximum of 30 minutes, a video recorded can be displayed with the Jalttest Data Player to perform a better diagnosis in the vehicle. The recorded videos are saved in the laptop and can be displayed when it's needed again.

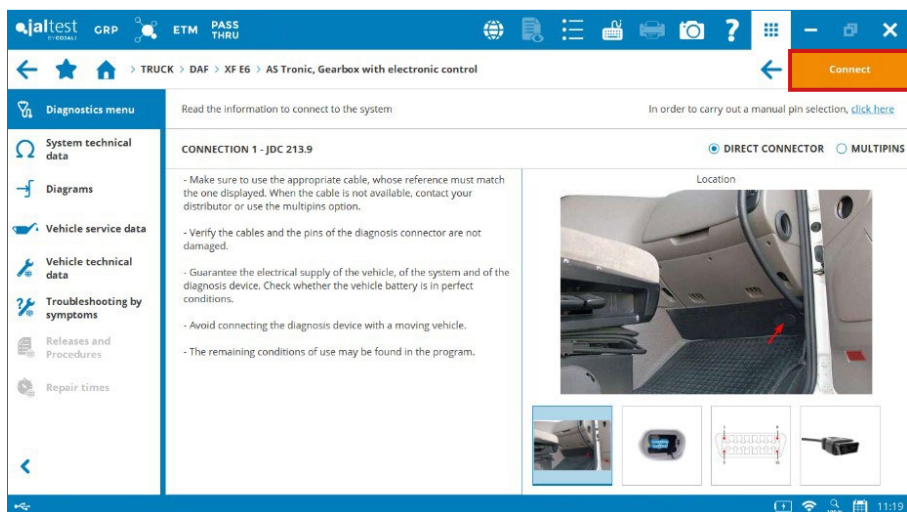
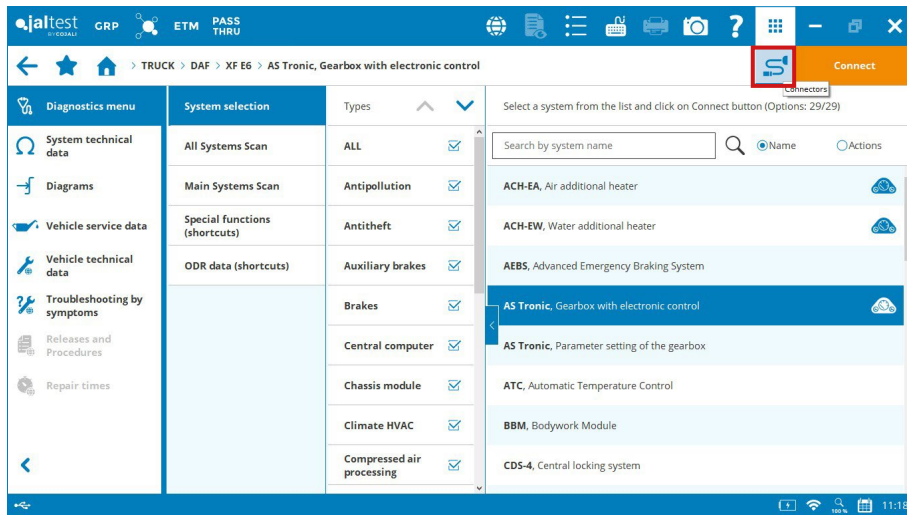
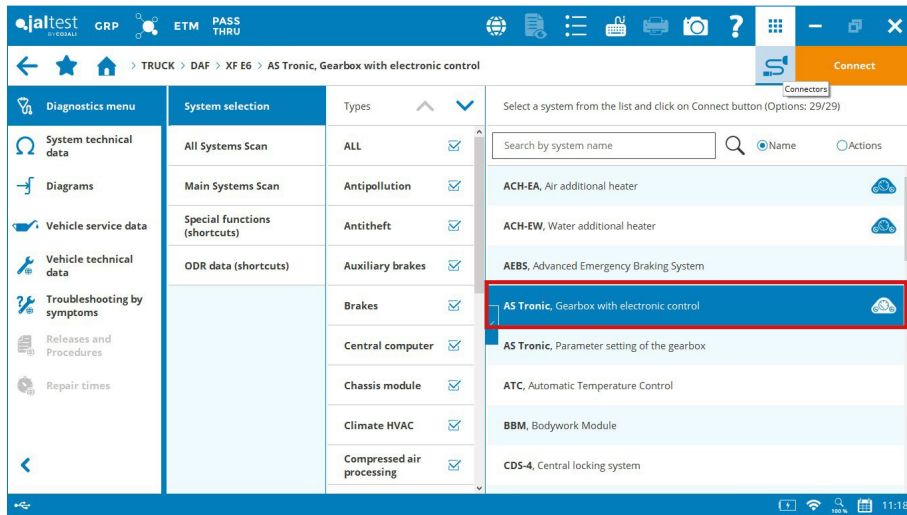


BRAND / MODEL CUSTOMIZATION

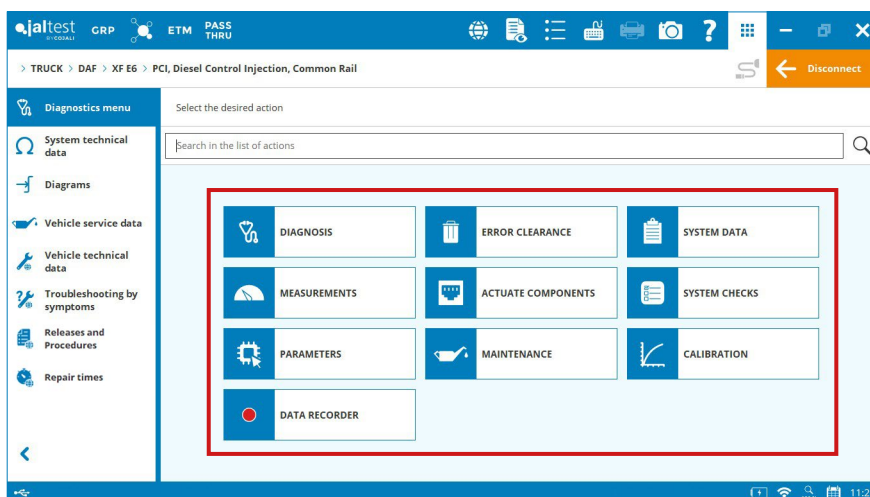
If there is a missing brand in Jalttest but the user knows exactly the systems that are installed in the vehicle, the brand can be created in Jalttest with this option.

4 Quick Connection (example)



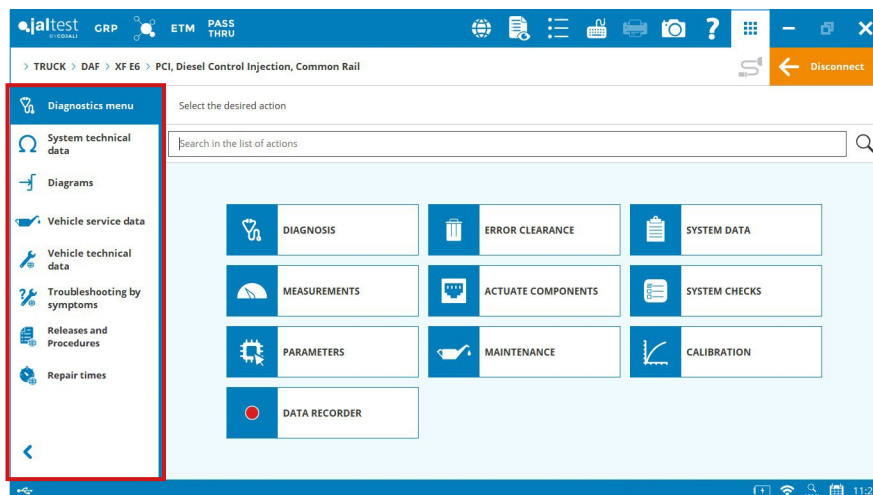


5 Diagnostics Menu



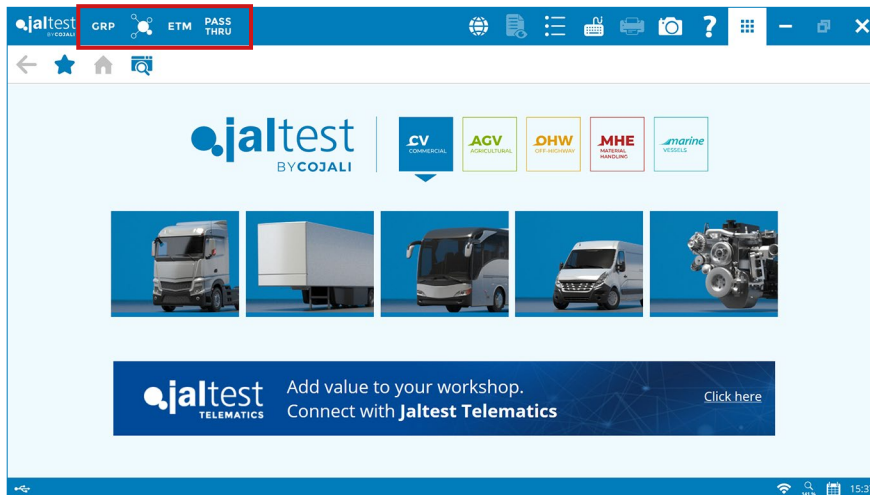
- 1. Diagnosis:** reading errors of the ECU with additional information like freeze-frame data and direct access to components or troubleshooting by error code.
- 2. Clear Errors:** erase and clean the memory of the ECU when there is not an active error.
- 3. System Data:** references of software, ECU, VIN, manufacturer, year...
- 4. Parameters:** modification of parameters as injectors, speed limit, fan regulation, braking parameters... the Expert Code is compulsory for this kind of functions.
- 5. Measurements:** reading values of all the sensors related to the selected system and show them in 3 different ways: a list of values, more visual (clocks, diagrams...) or live data.
- 6. Actuate Components:** activation of the components to check if they work properly, sending the order to switch it on and off.
- 7. System Checks:** perform different checks to see the correct values of the actuators, like a cylinder cutout or compression test.
- 8. Maintenance:** Maintenance functions are able to carry out resets for servicing the vehicle or replacing specific components.
- 9. Calibration:** adjustment of the component replaced to get it work accordingly to the vehicle and system specifications.
- 10. Data Recorder:** It allows to save the data of a vehicle for 30 minutes to see the behavior of some sensors or actuators. The Data Recorder allows to record a maximum of 24 different measurements.

6 Technical Information Menu



1. **Diagnostics menu:** access to the diagnostics menu and functionalities.
2. **System technical data:** technical information related to the selected system and technical characteristics.
3. **Diagrams:** wiring diagrams of the system, electronic architecture of communication bus and fuses and relays box diagram.
4. **Vehicle service data:** information about the different intervals service of the vehicle maintenance, including actions and recommendations.
5. **Vehicle technical data:** technical information of the main parts of the vehicle including the description of characteristics and recommendations.
6. **Troubleshooting by symptoms:** step by step troubleshooting guides with some of the most common errors and the way to fix them.
7. **Releases and Procedures:** information from the manufacturer about some manual actions to carry out calibrations or maintenances. Also, some details about the antipollution regulation or even details to find the correct vehicle to perform diagnostics.
8. **Repair times:** recommended investment of time to carry out different repairing works on the vehicle.

7 Additional Modules



1. **GRP:** ERP system to handle the customers and documents created while using Jalttest (customer creation and customization, brand customization, reception module, managing tasks, diagnostics and maintenance reports, ODF Telematics, user configuration...).
2. **iParts Assist:** as a spare parts manufacturer, we help our customers with an installation guide for some of the components they are able to acquire from our portfolio. Furthermore, it is included a cross reference list to find and identify the parts.
3. **ETM:** ETM stands for Electronic Test Module which allows the user to isolate braking electronic components from the main braking ECU. By checking the components directly, the diagnosis time is considerably reduced and the fault can be easily found. ETM is intended for trucks, not for trailers.
4. **Pass Thru:** Jalttest embraces most of the communication protocols and the Jalttest link can be used as the base hardware while working with original software. It is necessary to modify the VCI into the original software and select Jalttest Link as the hardware which will be used to connect.

For more information, please contact Jalttest Customer Service.

