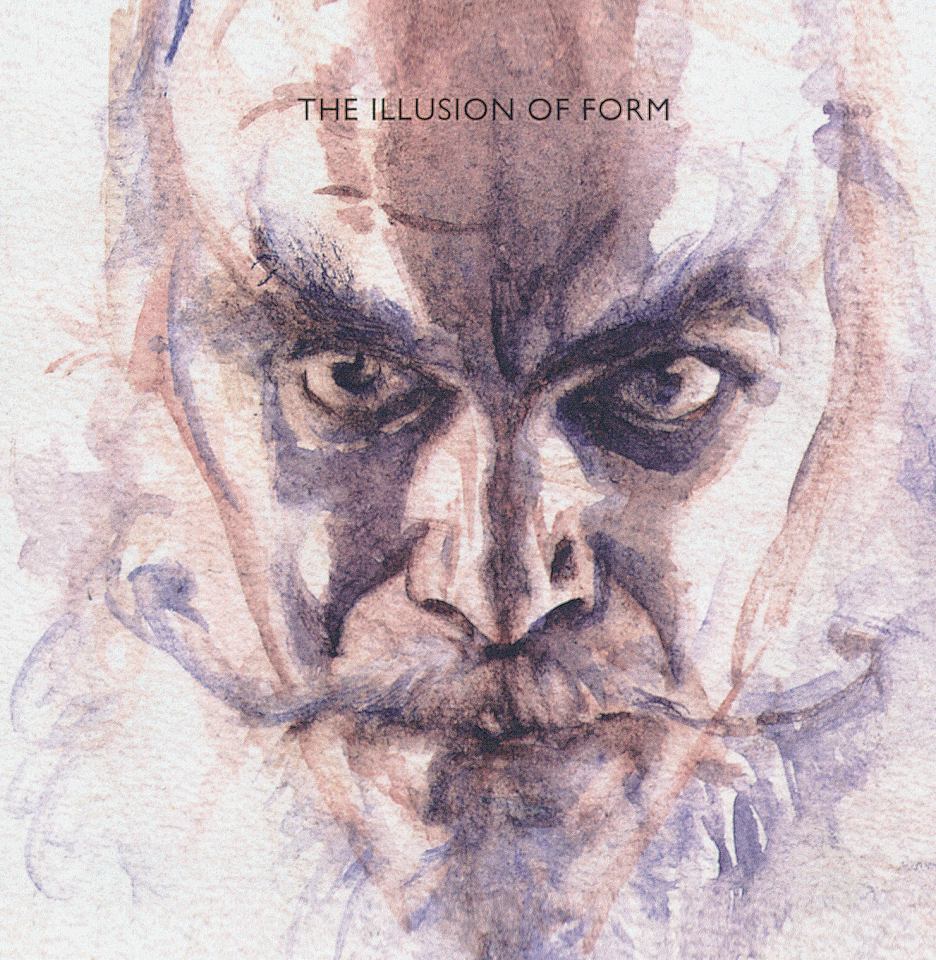


THE ILLUSION OF FORM

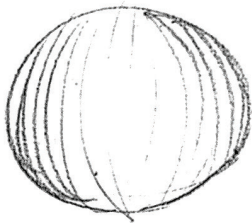
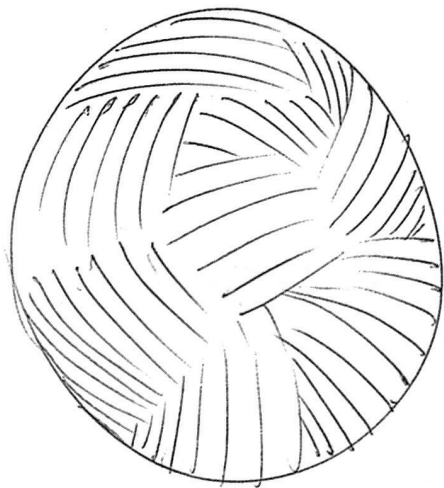




*drawn*  
**THE WORLD IS FLAT.**

Like master magicians, artists conjure up illusions—in this case, the illusion of three dimensions.

**CONTOURS** are lines, real or invented, that snake across the imagined surface of a thing and help invoke its form.



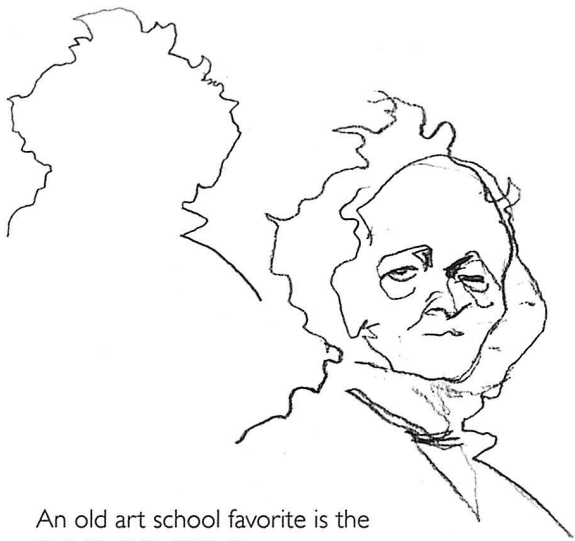
We already used **CONTOURS** when we laid a series of curved lines over a circle.

Now try the **BALL OF YARN** exercise.

**THIS TIME**, lay short curved lines across the circle from a variety of directions. Try not to break the illusion of one continuous surface.



The ball of yarn is great for drawing cat fur.



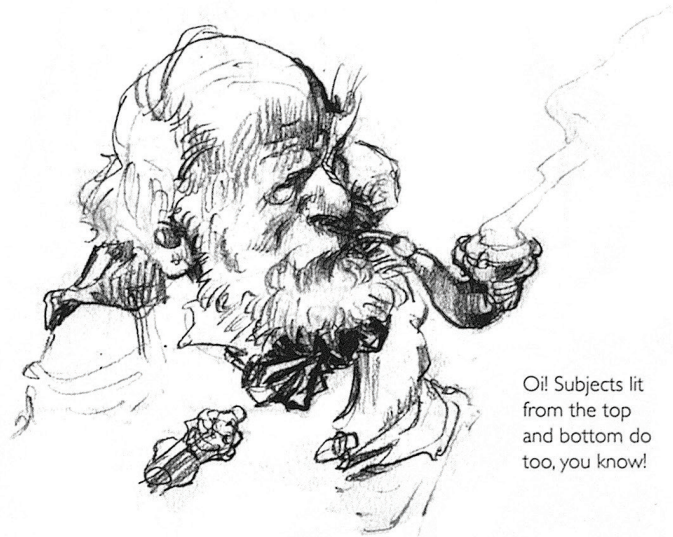
An old art school favorite is the  
BLIND CONTOUR.

Draw the outlines of the subject as  
if you were making a map, charting  
the form **WITHOUT EVER**  
**LOOKING AT THE PAPER.**



CORE SHADOWS are also contour lines.

Subjects lit from the side will have strong CORE SHADOWS running the length of the subject that follow and describe the contours of the surface forms.



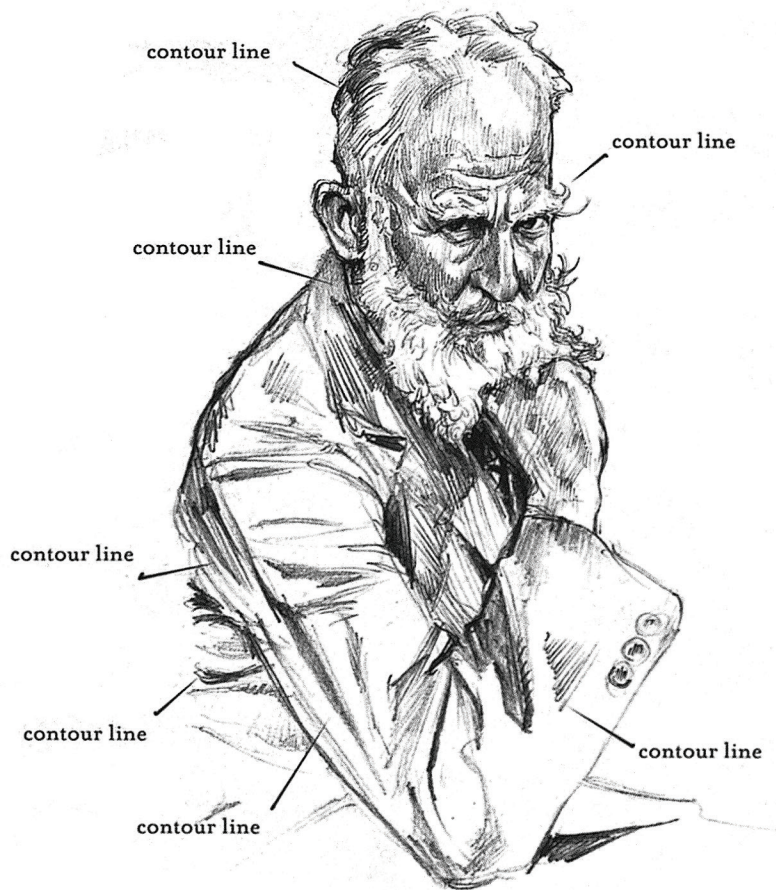
Oi! Subjects lit from the top and bottom do too, you know!





There are many  
contour lines that  
occur in NATURE:  
bark, vines, cast  
shadows and so on.

MASTER these and  
your illusions will start  
to feel real.



Good Luck!

tag line

