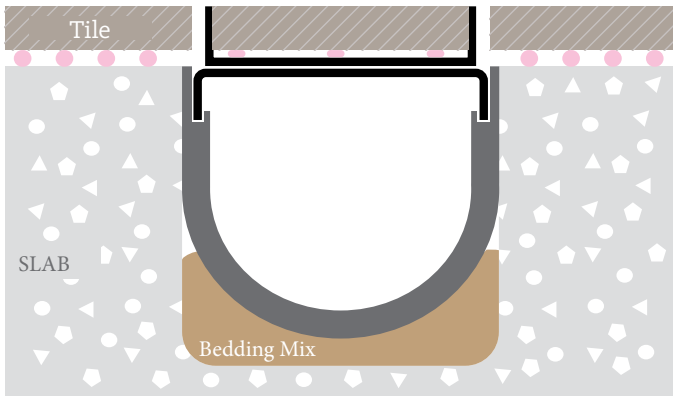




Linear Drain Covers

Installation Guide for HIDE Linear Drain Covers:



(Illustration 1:2)



(Illustration 1:3)

Site Preparation:

The provision or set up of the compatible channel/drainage must be prior to the slab pour (Illustration 1:2) or after by creating an oversize void or recess in the slab.

If a compatible channel is not an option, create a recess that is 126mm wide and at least 20mm deep (Illustration 1:3)

Note: Follow the Installation Instructions of the Channel Manufacturer: The HIDE Cover is suitable for pedestrian traffic only and not recommended for driveways. For a quick and easy installation of the HIDE Cover, accurately install the channel as per the manufacturer's instructions.

Channel Installation: To ensure a secure installation of the channel, 'bed in' the compatible channel straight and in line with the help of a string line. Fix the channel firmly in place before pouring the concrete and ensure that the channel's height or top wall edge is at the **slab height or the tile fixing height**. The channel should be set with a fall and gradient as per the site requirements.

Channel Width:

To easily remove the grate, cut the side locking wedges off before inserting into the plastic drain channel. Set the channel in place with the grate inserted to help set the width correctly during the slab pour. Then remove the grate to install the HIDE Cover. The surrounding tiles should finish at the channel wall, allowing a 6-7mm clearance for water egress on both sides of the cover.

Apply Adhesive:

Bead the adhesive between the tab holes to allow for water drainage. Make sure to leave ample space between the tray and tile to facilitate water drainage.



NO ACID / CHEMICAL WASH CONTACT
BY CONTRACTOR OR HOMEOWNER - EVER



SUITABLE FOR PEDESTRIAN TRAFFIC ONLY



HEAD OFFICE

26 Link Drive, Yatala, Qld, 4207

P: +61 7 3807 2551 (Office)
M: +61 427 270 560 (Gary Steele)
E: admin@skimmerlids.com.au
W: www.skimmerlids.com.au

PROUDLY MANUFACTURED BY:

SKIMMER LIDS
PTY LTD

@hideskimmerlids



Patents: AUST, UK, NZ available: www.skimmerlids.com.au
USA/Canada: www.skimmercovers.com (under technical tab)



Version 1:2023 LD

COMPONENT SUMMARY:

HIDE 1210mm Cover:

The 1210mm cover comes with a keyway provision at one end only. It is necessary to cut the keyway at only one end of the complete channel system, rather than at every section. The other end of the cover is designed to allow for shortening the cover without losing the keyway.

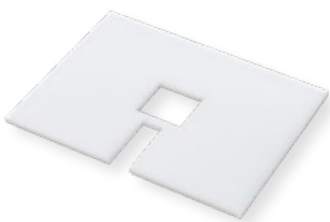
Each cover features five centralizing tabs. Before gluing the inlay or bridges, bend down the two outside tabs on each cover at a 90-degree angle using the lifting key or a screwdriver. The remaining tabs are only necessary if the cover has been shortened and can be used to indicate the locations of the bridges.



Height levellers:

If necessary, add one or more height levellers to the top of the bridges to increase the height of the cover. For additional adjustments, stack height levellers as needed. Use any remaining levellers to pack over the central bridges. If the channel is fitted at the correct height, levellers may not be required. HIDE® adhesive can adjust the height by up to 3mm, but for greater height adjustments, use the levellers.

Please note that the adhesive alone will not support the weight of an empty cover while drying. Set up the heights and cover layout patterns before gluing or tiling. After the assembly glue has dried, attach the tile inlay to the cover.



Click or Scan the QR Codes to open



Video - Components and assembly

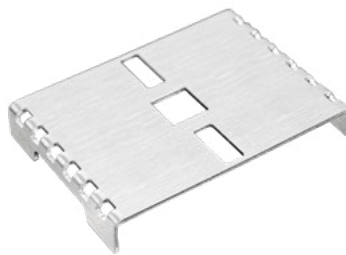


Video - Installation tips (on-site)

HIDE bridges - Standard

Each section of the HIDE® 1210 drain cover has five identical bridges that provide support to the cover. The central square hole in each bridge helps to align the cover with the center of the channel. When installing the cover, remember to bend the outermost tabs to ensure that the cover stays parallel.

To reduce the height of the cover, shorten the 5mm legs. If you need to increase the height, adhere the “height levers” to the top surface of the bridge.



Finishing kit Box:

For each HIDE® Linear Drain project, one finishing kit box is required and is sold and packaged separately. The kit includes two end caps, a lifting key/tab tool, and a stainless steel cutting disc.

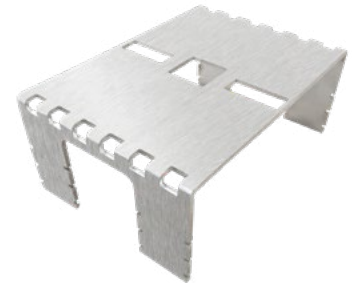
End Caps:

Each finishing kit includes two End Caps with the key and cutting disc. Two end Caps will finish the job nicely if you are installing one or multiple lengths. However, we have made extra End Caps available for purchase if you choose to add them to the end of every lid section. So please specify and order additional sets of End Caps if required. Also, allow drain clearance at the butting joints if required.



HIDE bridges - Extended (optional)

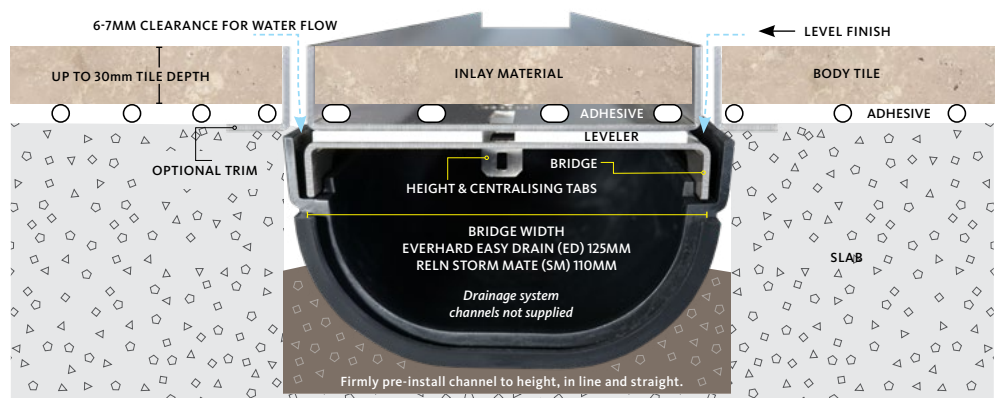
If you require a leveling bed or if the plastic channel is below the tile fixing height, HIDE® bridge extensions are available. The extensions are 50mm high and can be cut down to suit your needs.



Layout:

The tile inlay layout can be customized to your specifications. Before cutting or gluing, it's important to dry lay and set up heights.

HIDE® covers can be placed modularly or cut down to butt at grout lines. Be sure to allow for a drain clearance at the butting joints. If you need to use multiple modular lengths, specify “Endcaps” for each length if desired.



Important: No acid / chemical wash contact with stainless steel.
Pedestrian traffic only / not suitable for driveways.