

# AnchorMark

## S2 TTA

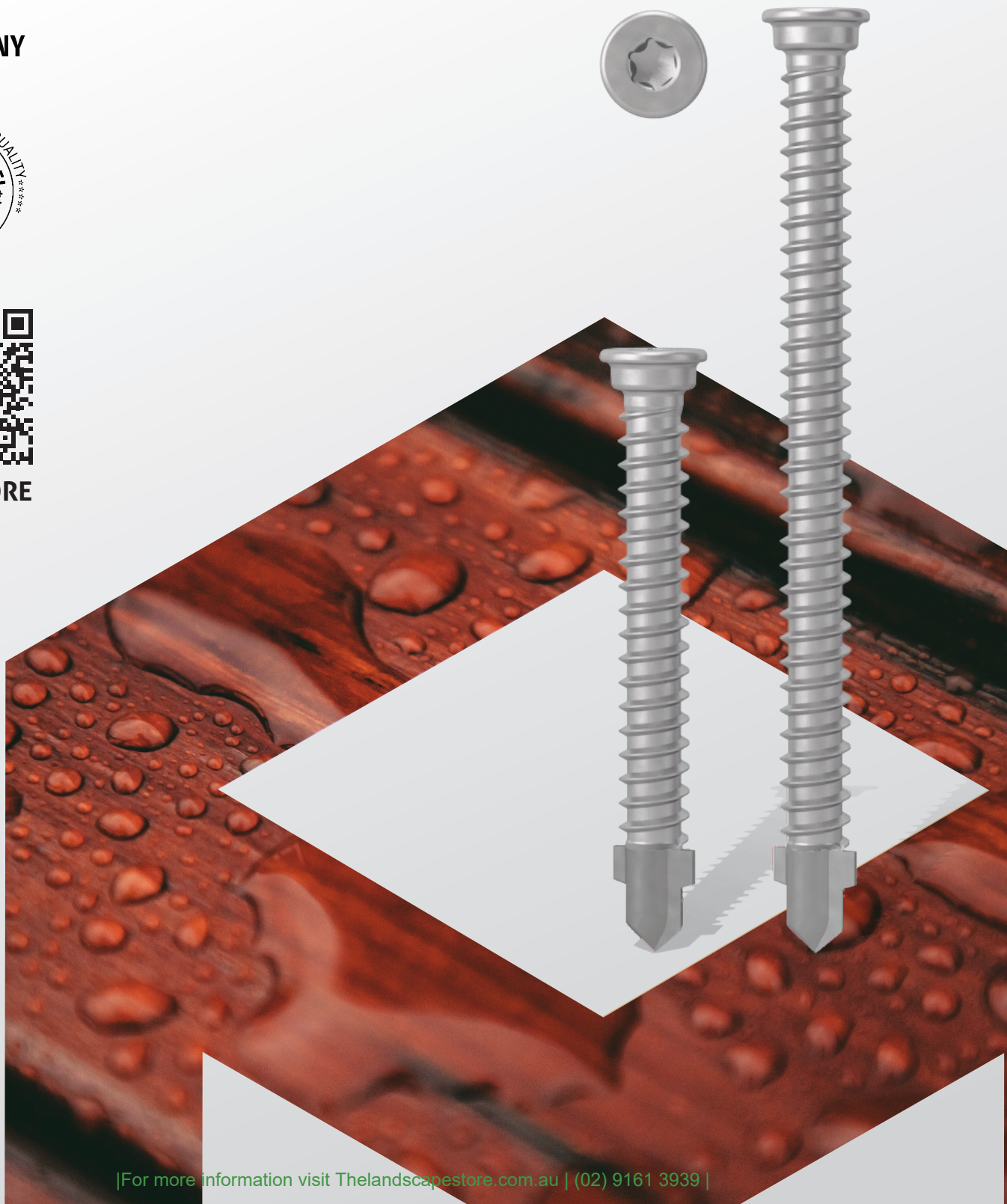
Series 2 Timber-to-Aluminium Decking Screws

*Unique and stylish finish for your decking and cladding with aluminium substructures.*

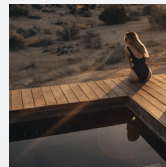
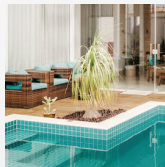
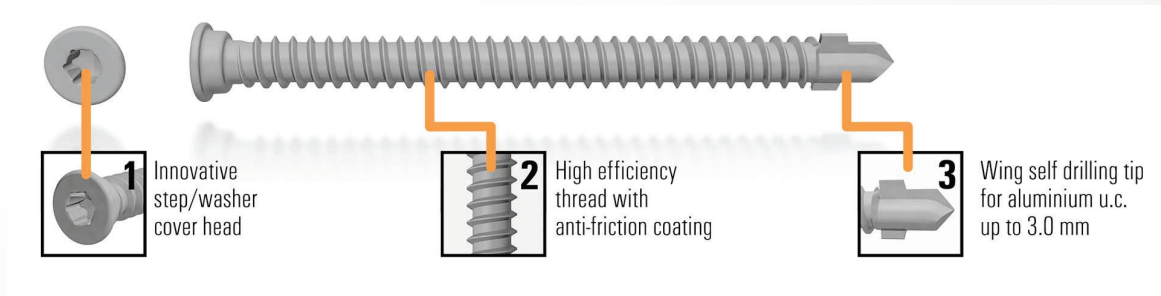
■ MADE  
■ IN  
■ GERMANY



LEARN MORE



## S2 TTA - Series 2 Timber-to-Aluminium Decking Screw



Watch our  
Application Video

Art. No. [Silver Stainless Steel]	Stainless Grade	Diameter [mm]	Length [mm]	Drive	Type	Timber Thickness [mm]	Aluminium Under-Construction [mm]	Qty [pce]
663650	316	5,5	45	SIT®20/TX 20	Timber to Aluminium	up to 26	1.6 - 3.00	100
663651	316	5,5	70	SIT®20/TX 20	Timber to Aluminium	up to 50	1.6 - 3.00	100
663670					AM Spacer Clip (Black plastic)			100

**1) The SIT® drive (TX compatible)** allows for optimum torque transmission, a tight and snug fit, and fast centering.

**2) The high efficiency thread** with anti-friction coating to reduce drive-in torque.

**3) An aggressive drilling tip** with wings cuts a clearance hole for decks with an aluminium under construction. It allows quick, easy and safe work without pre-drilling **for aluminium thickness: 1.6 – 3.0 mm.**

The **stainless steel grade of the screws (316)** gives them a high corrosion and weather resistance, increased fracture torque, and makes them suitable for outdoor use and close to water applications.

### NOTE:

Make sure that the connection does not exceed the recommended maximum **tensile capacity of 0.8kN** and a maximum **shear capacity of 4kN** per fixing point. If in doubt, speak to a qualified engineer for advice.

We strongly recommend the use of the spacer clip (Art. No. 663670) for **perfect results and extra safety.**