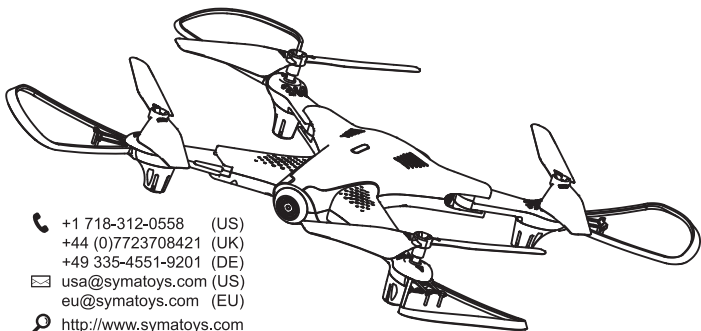


INSTRUCTIONS FOR USE

X300

FOLDABLE DRONE



☎ +1 718-312-0558 (US)
+44 (0)7723708421 (UK)
+49 335-4551-9201 (DE)
✉ usa@symatoys.com (US)
eu@symatoys.com (EU)
🌐 <http://www.symatoys.com>

English Manual:Page 1-17
Deutsche Anleitung:Seite 18-37

MAIN FEATURES

- Utilizes the 4-axis structure, enabling the drone to be even more flexible and speedy. It suitable for both spacious indoor & outdoor areas.
- Built-in 6-axis gyro stabilizer, barometer and optical flow sensor to ensure the accuracy of inflight position.
- Be capable of 360°stunt flip function,optical flow positioning, auto hover function.
- Headless function makes it easy for directional control.
- Auto take-off and landing function make it easier and safer to control.
- HD camera with real-time transmission function for getting the fun of aerial photography.
- With flight plan function, when the drone is controlled by mobile phone.

Safety Guide

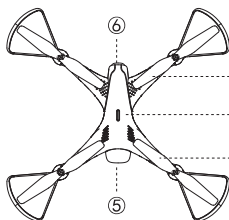
1. Please store the smaller-sized drone accessories in places that are out of reach of children.
2. This drone is very powerful. For all first-time flights, the left joystick must be slowly pushed up in order to prevent the drone from ascending too fast to avoid unnecessary collision and possible damage and injury.
3. Firstly turn off the power of the remote control when the flight ended.
4. Avoid placing the batteries in places with high temperatures and exposure to heat.
5. Take extra precaution to ensure that the drone is at a minimum distance of 15 feet from the pilot, other people, and animals in order to prevent bodily injury during flight operation. A minimum separation distance of 20 cm must be maintained between the user's body and the device under normal use condition.
6. This product is suitable for users aged 8 years or above. Not Safe for users under the age of 8 to use without adult supervision.
7. The children must be under adult supervision when using this aircraft.
8. Non-rechargeable batteries are not to be recharged; Batteries are to be inserted with the correct polarity; Different types of batteries or new and used batteries are not be mixed.
9. When the drone is not in use, please remove the batteries in the remote control.
10. The supply terminals are not be short-circuited.
11. Discharge the battery to 40%-50% (On a full charge, fly for half of the total flight time) if it will not be used for 10 days or more, this can greatly extend the battery life.
12. Please keep a safe distance from the spinning propellers to avoid injury.
13. To ensure the electromagnetic environment requirement of the aviation radio (station), using remote controls in the zone, which is in a radius of about 5000m zone from the circle center of the airport runway, is forbidden. All users should also abide by the regulation of the radio set forth by government and regulatory agencies including the duration and area.
14. Only uses the recommended transformer for the model, and the transformer is not a Toy. Check the cord, plug, enclosure and other parts of the transformer regularly. If any damages have been discovered, please immediately stop using it, until it was completely repaired.
15. Never look steadily at the laser beam since the laser radiation.
16. Please attention that the drone assembly under adult supervision.
17. The pilot is responsible for the safe operation and safe distance from uninvolved persons and property on the ground and from other airspace users and shall never fly the drone above crowds (> 12 persons).
18. Open the battery cover of the toy with screwdriver.
19. The packing has to be kept since it contains important information.
20. Do not touch the rotating rotor, avoid loose clothing or hair that could be caught in the rotor, do not fly near the face.
21. Advice to keep the instructions for use.

Repair and maintenance

1. Use dry and soft cloth to clean this product.
2. Avoid exposing this product to heat.
3. Do not immerse this product in water, otherwise, the electronic parts will be damaged.
4. Transformers used with the toy are to be regularly examined for damage to the cord, plug, enclosure and other parts, and that, in the event of such damage, the toys must be used with this transformer until the damage has been repaired.

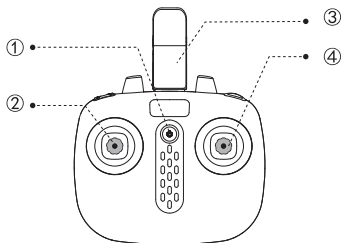
This toy is only to be connected to equipment bearing either of the following symbols: 

Aircraft components

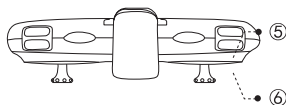


- ① Propeller protector
- ② Motor
- ③ Power switch
- ④ Propeller blades
- ⑤ Battery
- ⑥ camera

Understanding your remote control



- ① Power switch
- ② Left joystick Keep pushing in until trimming control finished.
To clear all the trimming setting, keep pushing and press the power button at the same time.



- ③ Phone mount
- ④ Right joystick Press and hold to enter/exit headless mode.
Press to change high/low speed.
- ⑤ 360° Stunt flip
- ⑥ Auto take-off and landing

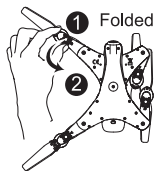
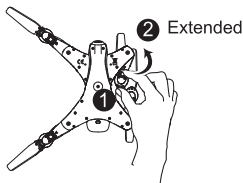
Package description

The following items can be found in this product package:

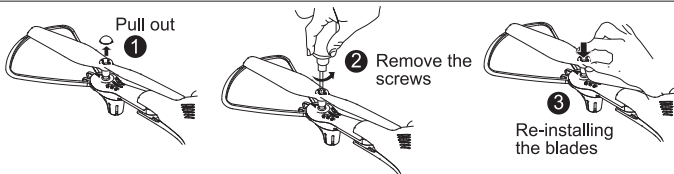
- Drone
- Remote Control
- User Manual
- 4 Blades
- Charging Cable
- 4 Protective Gears
- Mobile Phone Retaining Clip
- Battery
- Screwdriver



Fold operation

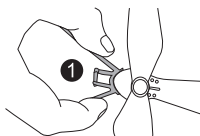


Re-installing the blades

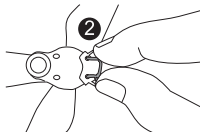


* A labeled blades fit on the A labeled motors. B labeled blades fit on the B labeled motors. Use the screws to tighten the blades. Refer to the image.

Protective Gear's Installation Methods



Insert the protective



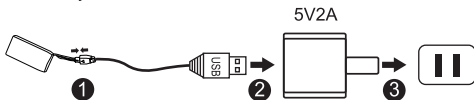
Insert the fixed rods on the protective gear into the two sockets in the arm

Battery Changing and Charging Methods for Drone

Press the battery cover and open it down, then remove the battery.

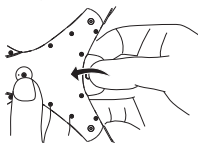


Charge the battery



The charging time is about 120 minutes; Hover flight time is approximately 20 minutes.

4. After charging completed, replace the battery into the drone.

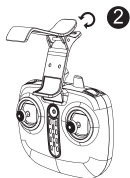
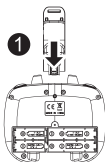


Precautions as follows during charging of battery:

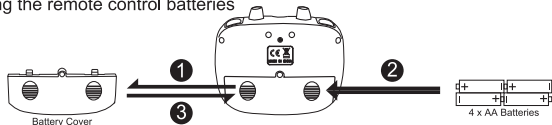


- Avoid placing the active batteries in places with direct exposure, sunlight and high temperatures. For example, naked light or electrical equipment installations; otherwise it may cause damages or explosions.
- Avoid immersing the batteries in the water. The batteries shall be stored in a cool and dry place.
- Avoid disassembling the battery.
- During the charging of battery, avoid leaving the charging place.
- Rechargeable batteries are to be removed from the toy before being charged.
- Rechargeable batteries are only to be charged under adult supervision.
- Exhausted batteries are to be removed from the toy.
- Caution: Risk of explosion if battery replaced by an incorrect type, dispose of used batteries according to the instructions.

Attaching the phone holder



Inserting the remote control batteries



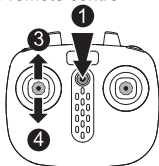
- * When installing the batteries, ensure that you match the + and – ends of the battery with the + and – signs on the controller.
- * During the battery installation, it must be ensured that the polarities of the batteries are matched with that of the battery box. No battery shall be installed with the opposite polarity.
- * Please do not use new and old batteries together.
- * Please do not use different types of batteries together.
- * The controller Do not use rechargeable batteries.



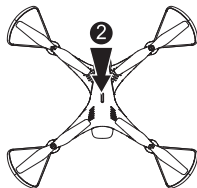
Flight preparation and turning the aircraft on/off

Pairing the remote control with the aircraft

Press the power button of the remote control.



Press the power button on the top of the drone to 1-2S make sure the drone is turned "ON".



Indicator stays constant when pairing is complete.

Turning the aircraft on

Method one



Move the left stick (throttle) fully up, after let it come back to the middle and the motors will start spinning.

Method two



Push the left and right joysticks downwards in a V shape for 1 second.

Method three



One-touch take-off/landing

Turning the aircraft off

Method one



Push the left joystick downwards for 2-3 seconds.

Method two



Push the left and right joysticks downwards in a V shape for 2 seconds.

Method three

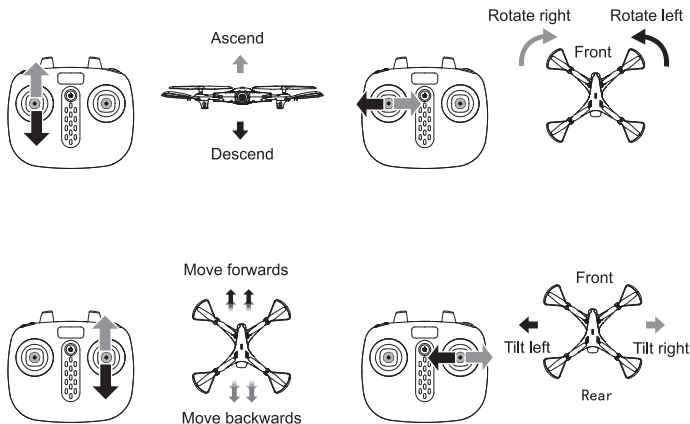


Press the take-off/landing button to make the aircraft land automatically and switch off.



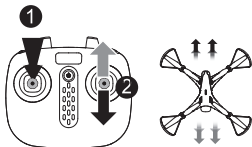
1. If the drone flies out of control range, the drone indicator lights will start flashing slowly and after the drone will slowly descend.
2. If the transmitter turns off or the transmitter battery runs low, the drone will slowly descend. Turn on the transmitter again, re-pair the unit and continue to fly.
3. Maximum radio-frequency power transmitted < 10 dBm. Frequency range: 2408 - 2478MHz

Using the remote control



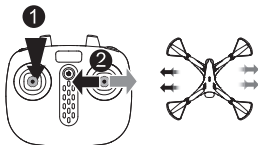
Trimming operation

Forward and backward trim control



If the drone automatically flies forward/backward while hovering, press in the left joystick and at the same time push the right joystick backward/forward slightly to fine tune the direction. Don't release the left joystick until the drone is flying in a stable state.

Left/right side flight trim control



If the drone automatically flies towards the left/right side while hovering, press in the left joystick and at the same time push the right joystick right/left slightly to fine tune the direction. Don't release the left joystick until the drone is flying in a stable state.

Product Features

1. Low-Voltage Protection:



Low battery

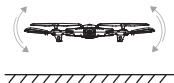
When the four indicator lights at the bottom of drone start flashing, it means that the drone's battery power is low. At this time, please control the drone return.

2. Over-Current Protection:

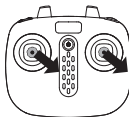


When the drone encounters direct impact from a foreign object, or is obstructed, or the blades are not rotating, the drone will go into the over-current protection mode.

3. Level Calibration Function:



Level calibration



Place the aircraft on a level surface and move the left and right joysticks to the lower right corner for approximately 3 seconds. The indicator will flash rapidly and then stay constant to indicate that the calibration process is complete.

4.High/Low Speed Function:

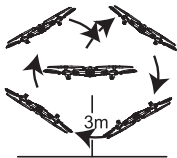


High/low speed mode

Briefly press the right joystick to switch between high and low speed mode.

1. Low speed mode is enabled by default when the aircraft is switched on.
2. The remote control beeps twice when high speed mode is enabled and once when low speed mode is enabled.

5.360°Stunt Flip Function:



When you are familiar with the basic actions, you can proceed to explore even more exciting stunt actions. Fly the drone to a height of above 3 m above the ground, press the upper right corner button (Stunt Flip Button) on the remote control and simultaneously push the right joystick to the farthest position of Front/Back/Left/Right, the drone will now execute the Front/Back/ Left/ Right stunt flip function.

Note: The drone will have the best stunt flip action when the batteries are fully charged.

6.Optical flow Hover & Auto Hover Function:

①Optical flow hover function



When the drone is turned on, the drone will automatically start the optical flow positioning function when hovering in the air, and the drone will remain stationary at a certain point.

Note:

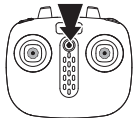
- 1.Achieve fixed-point accuracy of about 0.5 meters.
- 2.If the light is dark, the ground reflects, the height is greater than 12 meters, or the wind is above level 2,the optical flow positioning will influenced under these conditions, at this time the indicator light of the drone will be flashing three times.

②Auto Hover Function:

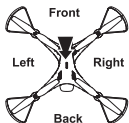
After using the left joystick (throttle) to control the ascending/descending flight of the drone, release the left joystick (throttle) and the drone will hover at that height when the joystick is released.

7. Headless Function:

①. Defining forward direction:



- Press on the power button of the remote control.

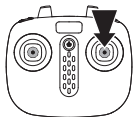


- Press the power button of the drone, and adjust the specified direction of the drone's head under the headless mode as the new forward direction.

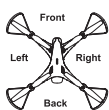


- Push the left joystick (throttle) on the remote control up to the farthest position and then pull down to the farthest position. When the remote control issues a long "beep" sound, it means the frequency and defining forward direction functions are completed.

②. Toggling between headless function and normal function:



- After the drone is matched with the corresponding frequency, the drone would be in normal pattern by default. At this time the indicator light on the drone would be in a state of on for a long time. After pressing in on the right joystick of the remote control for 2 seconds, the remote control would make a sound of "beep, beep, beep" to show that it has entered into a state of headless mode. Press in the right joystick for 2 seconds then a long sound of "beep" would be heard to show an exit status. (When under the state of headless mode, four indicator lights on the drone flash slowly once every four seconds).



- Under the headless mode, the operator does not need to differentiate the head position of the drone, and only needs to control the drone's direction front / back / left / right by using the right joystick direction on the remote control.

③. Calibration for the definition of the front:



When the drone encounters a direct impact with foreign objects in the headless mode, if there is an occurrence of deviation of the defined direction, it is only required to push both the left and right joysticks to the bottom left corners simultaneously after placing the flying direction of the drone in the correction position. When the led light indicator of the drone is in a long "ON" mode after slowly flashing for 3 seconds, it indicates the calibration is complete.

8. Wireless Real-Time Transmission Function

① Downloading the installation software

For Android phones, download and install the SYMA FLY APP by visiting the www.symatoys.com or by scanning the QR code.

For IOS Apple phones, download and install the SYMA FLY APP by visiting the App Store or by scanning the QR code.

Tips: QR codes are provided on the packaging box and at the bottom of the user manual. Please visit website www.symatoys.com or the App Store/Google Play to obtain the newest SYMA FLY App.

② For more information on the connection, refer to the APP operating instructions.

Brand Name: SYMA

Model: X300

ITEM NO.: X300

MADE IN CHINA



QR code for android system



QR code for apple iOS system



Warning: Changes or modifications to this unit not expressly approved by the party responsible for compliance could void the user's permissions to operate the equipment.

NOTE: This equipment has been tested and found to comply with the limits for a Class B digital device, pursuant to Part 15 of the FCC Rules. These limits are designed to provide reasonable protection against harmful interference in a residential installation. This equipment generates, uses and can radiate radio frequency energy and, if not installed and used in accordance with the instructions, may cause harmful interference to radio communications

However, there is no guarantee that interference will not occur in a particular installation. If this equipment does cause harmful interference to radio or television reception, which can be determined by turning the equipment off and on, the user is encouraged to try to correct the interference by one or more of the following measures:

- Reorient or relocate the receiving antenna.
- Increase the separation between the equipment and receiver.
- Connect the equipment into an outlet on a circuit different from that to which the receiver is connected.
- Consult the dealer or an experienced radio/TV technician for help.

"This device complies with FCC radiation exposure limits set forth for general population (uncontrolled exposure).

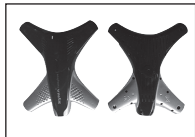
This device must not be collocated or operating in conjunction with any other antenna or transmitter."

Declaration of Conformity inserts

"Hereby, GuangDong Syma model aircraft Industrial co.,Ltd, declares that this drone is in compliance with the essential requirements and other relevant provisions of Directive 2014/53/EU." The full text of the EU declaration of conformity is available at the following internet address: <http://www.symatoys.com/down/declaration-of-conformity.html>

Accessories /Parts List (Optional)

You can choose your favourite optional accessories as below. In order to make it easier for the customers to choose and purchase, we have specially offered each and every accessory. The accessories can be purchased through the local distributors. Please



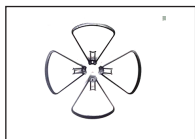
Body



Front arm A,B



Behind arm A,B



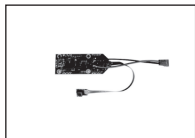
Protective Gear



Blade



Battery



Receiver Board



WiFi Board



Charging Cable



Remote Control

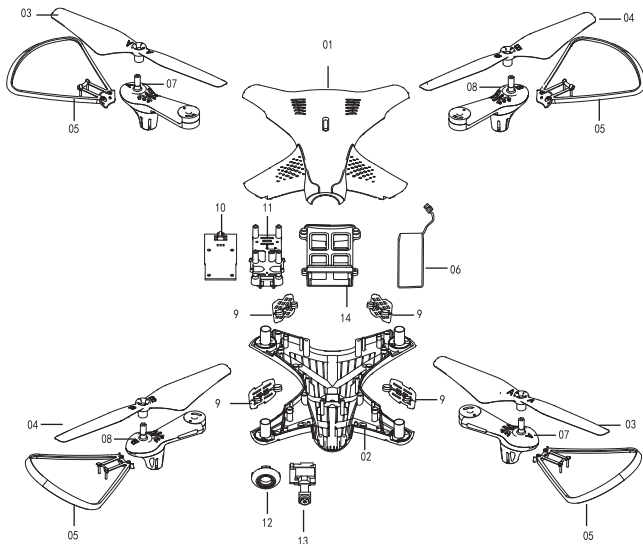


Mobile Phone
Retaining Clip



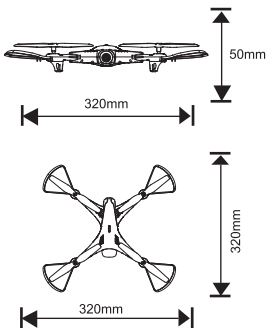
Plating Object

Product Descriptions



No.	Product Name	No.	Qty	Product Name	Qty	No.	Product Name	Qty
01	Top main body	1	05	Protective Gear	4	11	WiFi Box	1
02	Bottom main body	1	06	Battery	2	12	Front cover	1
03	Motor(counter clockwise direction)	2	07	Machine arm A	2	13	WiFi Board	1
			08	Machine arm B	4	14	Battery Box	1
04	Motor(Counter clockwise direction)	2	09	Baffle	1			
			10	Receiver Board	1			

Main Specifications



Drone's Length: 320mm
 Drone's Width : 320mm
 Drone's Height: 50mm
 Motor's Model : Ø8x16
 Battery : 3.7V 1500mAh lithium battery
 Charging time: about 120 minutes
 Charging mode: USB balance charging cable

·Remote control
 Operating frequency: 2.4G
 Range: 80m
 Battery: 4*1.5V“AA”

Rectification Procedures

Problem	Reason	Solution
The drone has no response	<ol style="list-style-type: none"> 1. The drone has entered into low-voltage protection. 2. When the power of the remote control is weak, the power light indicator will blink. 	<ol style="list-style-type: none"> 1. Charge up the drone. 2. Change the batteries of the remote control.
The flight response of the drone is not sensitive	<ol style="list-style-type: none"> 1. The power of the remote control is weak. 2. There is an interference with the same frequency as that of the remote control. 	<ol style="list-style-type: none"> 1. Change the batteries. 2. Change to a place where there is no interference with the same frequency.
The drone is flying towards its side in one direction during hovering	<ol style="list-style-type: none"> 1. The drone is not calibrated level to the ground. 	<ol style="list-style-type: none"> 1. Re-adjust the calibration until the drone is level to the ground. For further details,
In the headless state, it is biased towards the front direction	<ol style="list-style-type: none"> 1. Many collisions may cause head drift. 	<ol style="list-style-type: none"> 1. Re-define the front direction. For further details,
Fixed high instability / up and down movement	<ol style="list-style-type: none"> 1. The drone is not calibrated level to the ground. 2. Unstable air pressure under the severe weather condition. 3. Violent collision resulting in data disorder of gyroscope. 	<ol style="list-style-type: none"> 1. Re-adjust the calibration until the drone is level to the ground. For further details, 2. Avoid to fly under the severe weather condition. 3. Make level adjustment again,

European Representative:
CET PRODUCT SERVICE LTD.
Osterholzallee 144

71636 Ludwigsburg Germany
Phone: +4971416432236
Email: info.cetservice@gmail.com

British Representative:

CET PRODUCT SERVICE LTD.
Chase Business Centre, 39-41 Chase Side,
London N14 5BP United Kingdom
E-mail: info.cetservice@gmail.com Tel: +447419325266

United States Representative:

Duvin Trade Inc
5800 Wood Sorrel Dr., Littleton, Co, 80123, United States
Phone: 718-312-0558
E-mail: amz@symatoys.com

SYMA is a trademark of Guangdong Syma Model Aircraft Industrial Co., Ltd. registered in the United States and/or other countries.

Manufacturer:

Guangdong Syma Model Aircraft Industrial Co., Ltd.
Address: No. 2 West Xingye Road, intersection of North Xingye Road,
Laimei Industrial Park, Chenghai District, Shantou City, Guangdong
Province, China.
Postal Code: 515800

Contact Us

Please do not hesitate to contact us if you need more further support

✉ warranty@symatoys.com.cn

☎ +1 718-312-0558(US)

+44 (0)7723708421(UK)

+4933545519201(DE)



For online support, please scan this
code with Facebook Messenger

The company has the right of final interpretation of this user manual.

WARRANTY



LIMITED 2-YEAR WARRANTY AND FREE LIMITED REPLACEMENT PARTS FOR 2 YEARS

Symatoys.com.cn warrants to the original buyer only that its products will be free from defects in material and workmanship for 2 years from the date upon which the product is shipped, either directly from symatoys.com.cn or from an Authorized Re-seller's location, to the buyer.

The following condition's must to be eligible for warranty coverage:

1. During the warranty period product is used as intended by the manufacturer.
2. The Product has not been disassembled or modified.
3. The labels and serial numbers show no signs of tampering or altering.
- 4. Buyer has a warranty code obtained by registering their product online prior to making a claim.**

EXCEPTIONS: THE LIMITED WARRANTY SHALL NOT APPLY TO:

- Damage caused by normal wear and tear
- Accident, negligence, abuse, misuse, misapplication or willful damage by buyer (or its agents), or acts of nature
- Crash or burning caused by non-manufacturing factors
- Damage caused by authorized modification or disassembly not authorized by the instruction manual
- Damage. caused by incorrect use or operation
- Damage caused by mismatch or misuse of battery or charger
- Failure of the operator to follow the operating instruction or use outside the products operating parameters
- Damage caused by operating the product in or around electromagnetic interference (i.e., radio transmitting tower, high-voltage wire, substation, etc.)
- Damage caused by operating the product where there may be interference caused by other wireless devices
- Operating the product with load capacity in excess of the sale weight listed in the manual
- Operating the product with aged, damaged or unauthenticated third-party components
- Operating the product with a defective battery

WARRANTY

PROCEDURE: Any claims for breach of the foregoing limited warranty shall only be valid if buyer makes such claim in writing within 2 year of the date of shipment of the product to which the claim. To make a warranty claim, please email warranty@symatoys.com.cn with your full name, address, phone number, order number, vehicle type, part type and purchase date and product issue.

LIMITED REMEDY: Symatoys.com.cn's sole liability, and buyer's sole remedy for any breach of the foregoing warranty shall be at symatoys.com.cn's option to exchange the product with a new product or a refurbished product that is functionally equivalent to the original product, or issue a credit or refund to the purchase price the product. Any replaced products shall be warranted as set forth herein, provided that the period within which buyer may make further claims shall be limited to the remainder of the original period for the applicable product or 2 years, whichever is longer (although the warranty period shall be suspended during any period of replacement)

DISCLAIMER: THE WARRANTY AND REMEDIES ARE EXCLUSIVE AND IN LIEU OF ALL OTHER WARRANTIES. AND Symatoys.com.cn DISCLAIMS ALL OTHER WARRANTIES, EXPRESS OR IMPLIED, INCLUDING WITHOUT LIMITATION THE IMPLIED WARRANTIES OF MERCHANTABILITY AND FITNESS FOR A PARTICULAR PURPOSE, NON-INFRINGEMENT AND ANY WARRANTIES ARISING OUT OF COURSE OF DEALING, COURSE OF PERFORMANCE AND TRADE USAGE.

Symatoys.com.cn IS NOT RESPONSIBLE FOR DIRECT, SPECIAL, INCIDENTAL OR CONSEQUENTIAL DAMAGES RESULTING FROM ANY BREACH OF WARRANTY OR CONDITION, OR UNDER ANY OTHER LEGAL THEORY, INCLUDING BUT NOT LIMITED TO LOSS OF USE; LOSS OF REVENUE; LOSS OF ACTUAL ANTICIPATED PROFITS (INCLUDING LOSS OF PROFITS ON CONTRACTS); LOSS OF THE USE OF MONEY, LOSS OF ANTICIPATED SAVINGS; LOSS OF BUSINESS LOSS OF OPPORTUNITY; LOSS OF GOODWILL, LOSS OF REPUTATION; LOSS OF DAMAGE TO COMPROMISE OR CORRUPTION OF DATA; OR ANY INDIRECT OR CONSEQUENTIAL LOSS OR DAMAGE HOWSOEVER CAUSED INCLUDING THE REPLACEMENT OF EQUIPMENT AND PROPERTY.

ANY COSTS OF RECOVERING OR REPRODUCING ANY DATA STORED IN OR USED WITH THE PRODUCT OR ANY FAILURE TO MAINTAIN THE CONFIDENTIALITY OF INFORMATION STORED THE PRODUCT.

Some states do not allow the exclusion or limitation of incidental or consequential damages, so the above limitation or exclusion may not apply to you. In addition, some states do not allow limitations on how long an implied warranty lasts, so the above limitation may not apply to you.

FREE REPLACEMENT PARTS FOR 2 YEARS:

Symatoys.com.cn shall also make available any spare part needed for registered vehicles free of charge for 2 years from the date of purchase, with the exception of batteries, motors, circuit boards and transmitters. Shipping charges may apply Limit one part type request per registered vehicle (e.g., registrants are entitled to one extra set of batteries per registered vehicle). To request spare parts, please email warranty@symatoys.com.cn with your warranty code, vehicle name/model, current shipping address, purchase date and part type

GET YOUR WARRANTY CODE AT symatoys.com.cn/pages/warranty-signup
HAVE YOUR ORDER NUMBER AND/OR VEHICLE UPC READY