

No. 99197N  
Baseball Hoodie  
Sizes: 2, 4, 6



**mary maxim**<sup>®</sup>  
EXCLUSIVE NEEDLEWORK and CRAFTS Inc.

# No. 99197N

## Baseball Hoodie

### Sizes: 2, 4, 6

**mary maxim**<sup>®</sup>  
EXCLUSIVE NEEDLEWORK and CRAFTS

**Materials:** Mary Maxim Worsted Weight yarn

Main Color Lt Blue  
Contrast Color 1 Red  
Contrast Color 2 Dk Blue  
Contrast Color 3 White

#### All Sizes

3 balls  
70 yds [64 m]  
1 ball  
35 yds [32 m]

#### Suggested Needles:

Size 5 US, (Canadian size 9, Metric size 3.75 mm)  
Size 8 US, (Canadian size 6, Metric size 5.00 mm)

#### Measurements:

Finished Chest Measurement: 24(26, 28)" [61(66, 71) cm]  
Length from Shoulder: 14(15, 16)" [35.5(38m 40.5) cm]  
Sleeve Seam: 9(11, 12½)" [23(28, 31.5) cm]

#### TO SAVE TIME, TAKE TIME TO CHECK GAUGE

**Gauge:** 18 sts and 24 rows to 4" [10 cm], measured over Stocking stitch using **suggested** larger needles or any size needles which will give the correct stitch gauge or tension.

**Wash in cool water, gentle cycle. Dry using low heat, maximum 5 minutes, remove and lay flat to dry.**

**Abbreviations:** MC, Main Color; CC, Contrast Color; k, knit; p, purl; st, stitch; sts, stitches; beg, begin or beginning; dec, decrease or decreasing; inc, increase or increasing; ", inches; yds, yards; cm, centimeters; mm, millimeter; rem, remain or remaining; rep, repeat; sl, slip; yo, yarn over; tog, together; tbl, through back loop.

#### Special Abbreviation:

**ssk - slip, slip, knit together:** Slip next 2 stitches knitwise, one at a time to right needle, then insert left needle through fronts of both stitches and knit together as usual.

**Right Front:** Using smaller needles and CC 1, cast on 27(27, 31) sts and work ribbing as follows:

**Row 1:** (right side) K3, \*p2, k2; rep from \* to end.

**Row 2:** \*P2, k2; rep from \* to last 3 sts, p3.

Repeat these 2 rows once more.

Change to MC and repeat these 2 rows once.

Change to CC 1 and repeat these 2 rows twice, dec 2(0, 2) sts evenly across last row - 25(27, 29) sts.

Now change to larger needles, MC yarn and beg with a k row, proceed to follow Right Front Graph in St st - one row k, one row p, until 10 rows have been completed.

#### To Place Pocket:

**Next Row:** (right side) K to last 7(9, 11) sts, sl 1, k1, pssso, k1, place rem 4(6, 8) sts on st holder for pocket lining.

\*\*Continue shaping pocket front as indicated, until 28 rows have been completed.

Leave rem 12 sts for the moment and proceed with pocket lining as follows:

**Pocket Lining:** Using larger needles and MC, cast on 18 sts and beg with a k row, work 10 rows in St st.\*\*

**Next Row:** K 18, then with right side facing, k4(6, 8) sts from st holder - 22(24, 26) sts.

Now continue in St st until 28 rows in all have been completed.

#### Joining Pocket Lining and Pocket Front:

**Next Row:** (right side) With right sides facing, place pocket lining behind pocket front, k3 from Pocket Front, \*then take one st from front and one st from lining and k2tog; rep from \* until all front sts have been worked, k to end - 25(27, 29) sts.

Continue to follow graph, casting off and dec for raglan armhole.

Cast off and dec for front neck as indicated.

When one st rem, break yarn and fasten off.

**Left Front:** Using smaller needles and CC 1, cast on 27(27, 31) sts and work ribbing as follows:

**Row 1:** (right side) \*K2, p2; rep from \* to last 3 sts, k3.

**Row 2:** P3, \*k2, p2; rep from \* to end.

Repeat these 2 rows once more.

Change to MC and repeat these 2 rows once.

Change to CC 1 and repeat these 2 rows twice, dec 2(0, 2) sts evenly across last row - 25(27, 29) sts.

Now change to larger needles, MC yarn and beg

with a k row, proceed to follow Left Front Graph in St st - one row k, one row p, until 10 rows have been completed.

#### **To Place Pocket:**

**Next Row:** (right side) K4(6, 8), then place these sts on st holder for pocket lining, k1, k2tog, k to end. Now work as for Right Front from \*\* to \*\*. Break yarn.

**Next Row:** With right side facing, k4(6, 8) sts from st holder, k 18 sts of pocket lining - 22(24, 26) sts. Now continue in St st until 28 rows in all have been completed.

#### **Joining Pocket Lining and Pocket Front:**

**Next Row:** (right side) With right sides facing, place pocket lining behind pocket front, k 13(15, 17) from Pocket Lining, \*then take one st from front and one st from lining and k2tog; rep from \* until all front sts have been worked, k to end - 25(27, 29) sts.

Continue to follow graph, casting off and dec for raglan armhole.

If desired, place initial of team or team player, centering to fit for size being worked. Work design in "Colored Pattern" knitting method, using separate balls of color for each section of the design.

Remember always to cross yarns when changing colors to avoid leaving a hole in the knitting.

Cast off and dec for front neck as indicated.

When one st rem, break yarn and fasten off.

**Back:** Using smaller needles and CC 1, cast on 54(58, 66) sts and work ribbing as follows:

**Row 1:** K2, \*p2, k2; rep from \* to end.

**Row 2:** P2, \*k2, p2; rep from \* to end.

Repeat these 2 rows once more.

Change to MC and rep these 2 rows once.

Change to CC 1 and rep these 2 rows twice, dec 0(0, 2) sts across last row - 54(58, 64) sts.

Now change to larger needles, MC and beg with a k row, work 40(44, 46) rows in St st (same length as fronts to beg of raglan shaping).

**To Shape Raglan Armholes:** Cast off 2(3, 3) sts at beg of next 2 rows - 50(52, 58) sts.

Continue in St st, dec one st at each end of the next row, then every alternate row following until 20 sts rem, ending after a p row.

Cast off.

**Sleeves:** Using smaller needles and CC 1, cast on 30(34, 34) sts and work ribbing as given for Back, but do not dec on last row - 30(34, 34) sts.

Now change to larger needles and beg with a k row, proceed to follow Sleeve Graph in St st, inc as indicated and working design as before.

Change number as desired.

Cast off and dec for raglan as indicated.

Cast off on last row.

**Front Bands:** Using smaller needles and with right side of either front facing, pick up and k 54(62, 66) sts evenly along front edge between bottom edge and beg of neck shaping.

**Next Row:** P2, \*k2, p2; rep from \* to end.

**Next Row:** K2, \*p2, k2; rep from \* to end.

Cast off in pattern.

Repeat on other front.

Sew all raglan seams.

**Hood:** Using larger needles and CC 1, cast on 90(94, 98) sts.

**Row 1:** (right side) K2, \*p2, k2; rep from \* to end.

**Row 2:** P2, \*k2, p2; rep from \* to end.

Repeat these 2 rows once more.

Change to MC and rep these 2 rows once more.

Change to CC 1.

**Next Row:** Ssk, \*p2, k2; rep from \* to last 4 sts, p2, k2tog - 88(92, 96) sts.

**Next Row:** P1, \*k2, p2; rep from \* to last 3 sts, k2, p1.

**Next Row:** Ssk, p1, \*k2, p2; rep from \* to last 5 sts, k2, p1, k2tog - 86(90, 94) sts.

**Next Row:** P1, k1, \*p2, k2; rep from \* to last 4 sts, p2, k1, p1.

Change to MC.

**Next Row:** (right side) K1, ssk, k to last 3 sts, k2tog, k1 - 84(88, 92) sts.

**Next Row:** Purl.

Repeat these last 2 rows until 70(74, 78) sts rem, ending after a p row.

**To Shape Hood:** K 44(46, 48), ssk, k1, turn.

**Short Row 1:** Sl 1 knitwise, p 19, p2tog, p1, turn.

**Short Row 2:** Sl 1 knitwise, k 19, ssk, k1, turn.

Repeat these last 2 rows until 26(30, 30) sts rem, ending after a Short Row 1.

**Next Row:** Sl 1 knitwise, k 19, ssk, [k2tog] 1(2, 2) times, turn.

**Next Row:** Sl 1 knitwise, p 19, p2tog, [p2tog tbl] 1(2, 2) times - 22(26, 26) sts.

Cast off.

Fold cast off edge of hood in half and pin center to center of back neck. Sew hood in place, easing to fit neck and having ribbing beg and ending at each front edge.

**To Complete:** Sew side and sleeve seams.

Sew pocket linings in place on wrong side of each front.

Measure front bands from bottom edge to beg of the neck edge for required length of a lightweight, separating zipper.

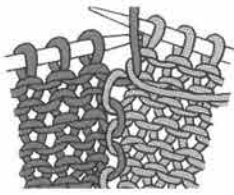
You may have to purchase a zipper that is a little shorter than the actual length; if so, center the zipper as desired and sew in place.

Pin zipper in place, having teeth of zipper lay evenly along front edge of band.

Sew zipper in place securely.

## How to Work Design

### Colored Pattern Knitting:



This method is used for large areas of each color and background, using small balls of color for each area. Work required number of sts, drop color in use to be picked up on next row, bring new color under and over last color, thus avoiding a hole in the knitting.

**NOTE:** Instructions are given for the smallest size and remaining sizes are given in the brackets following. Where only one set of instructions are given, this will apply to all sizes. Every square on the graph represents a stitch. Changes in color and texture are shown by different symbols. Follow graph from right to left for knit rows and left to right for purl rows.

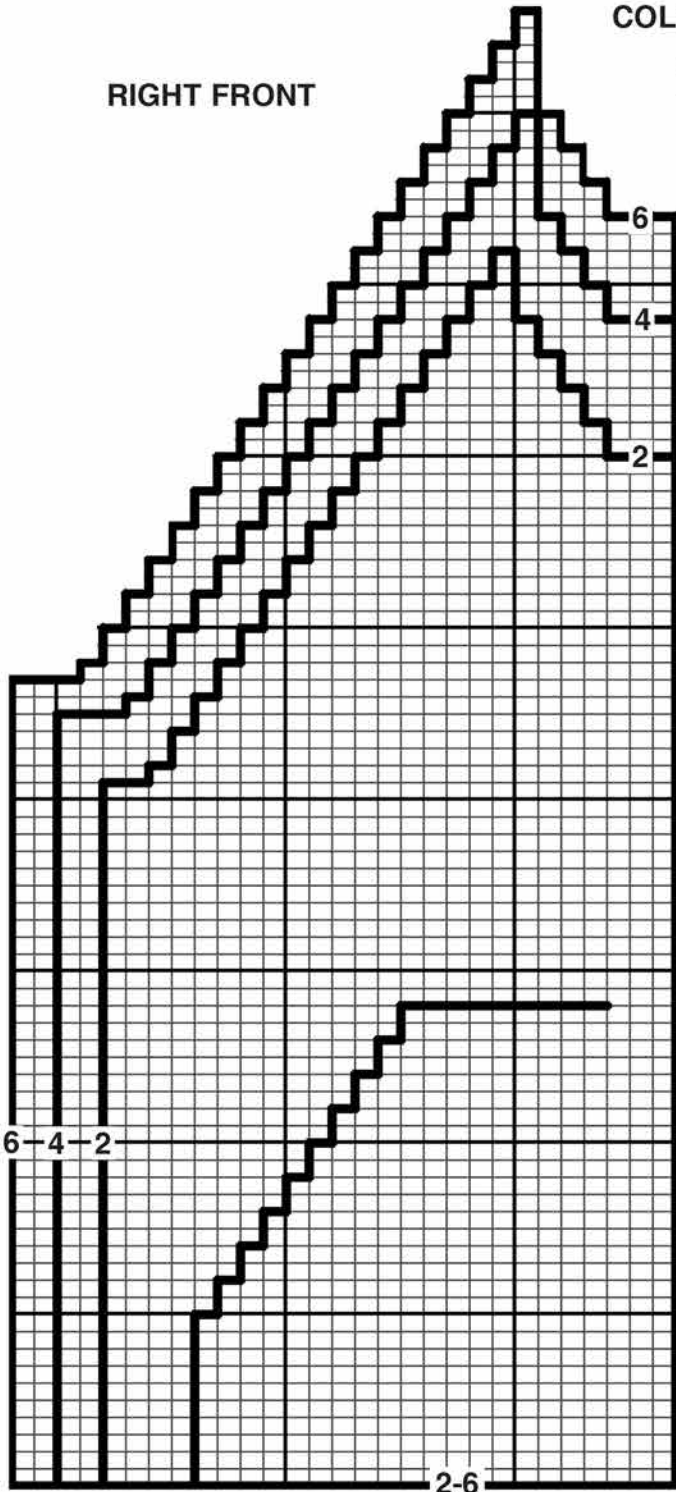
**Please Note:** Letter on Left Front Graph can be changed to any letter desired using the alphabet given.

RIGHT FRONT

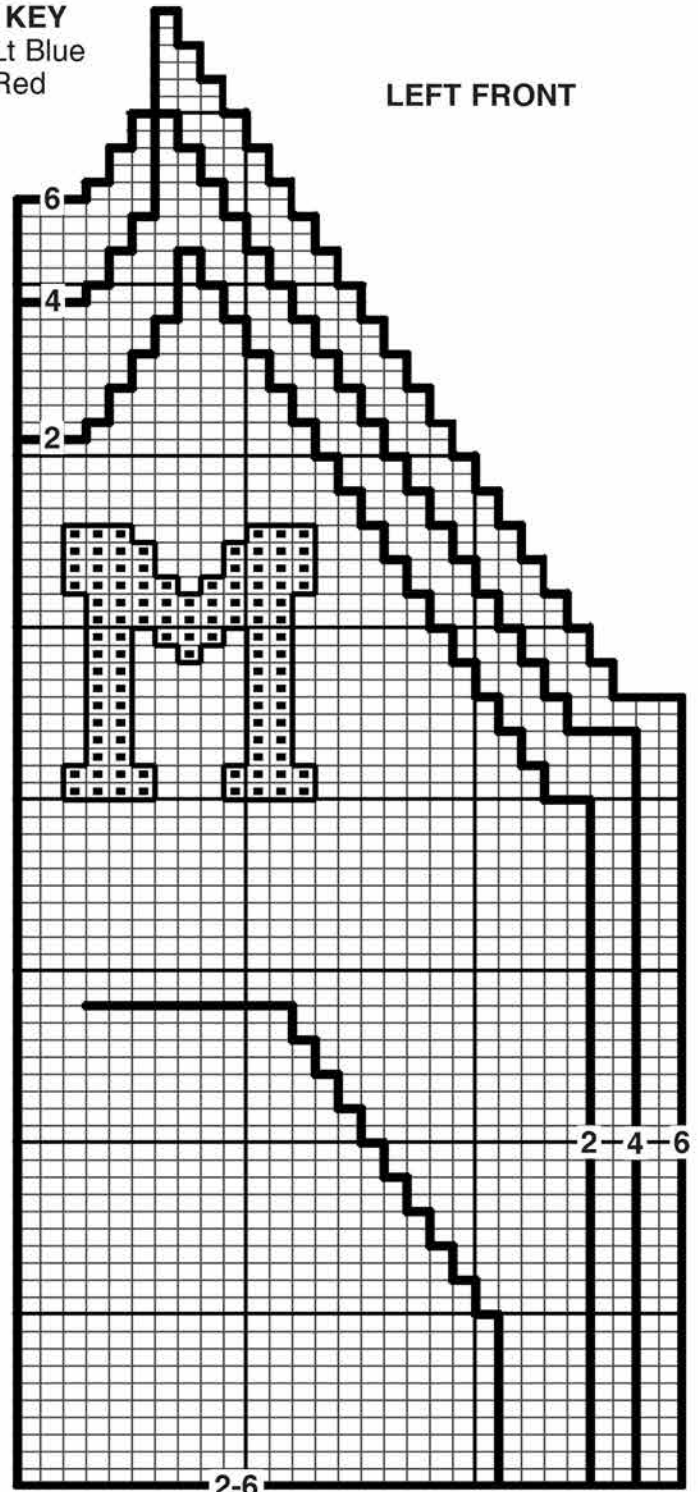
### COLOR KEY



LEFT FRONT



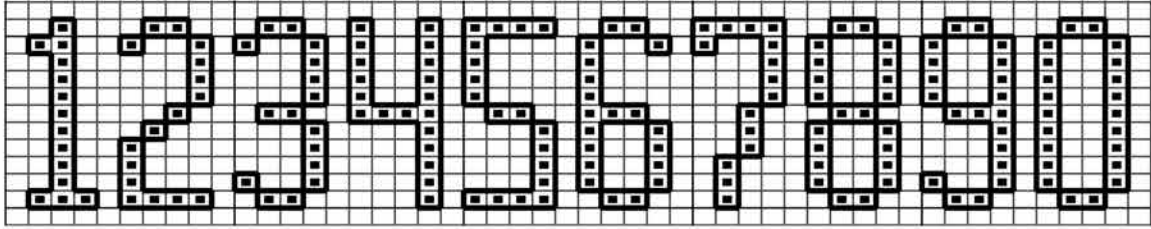
READ PURL ROWS FROM THIS SIDE



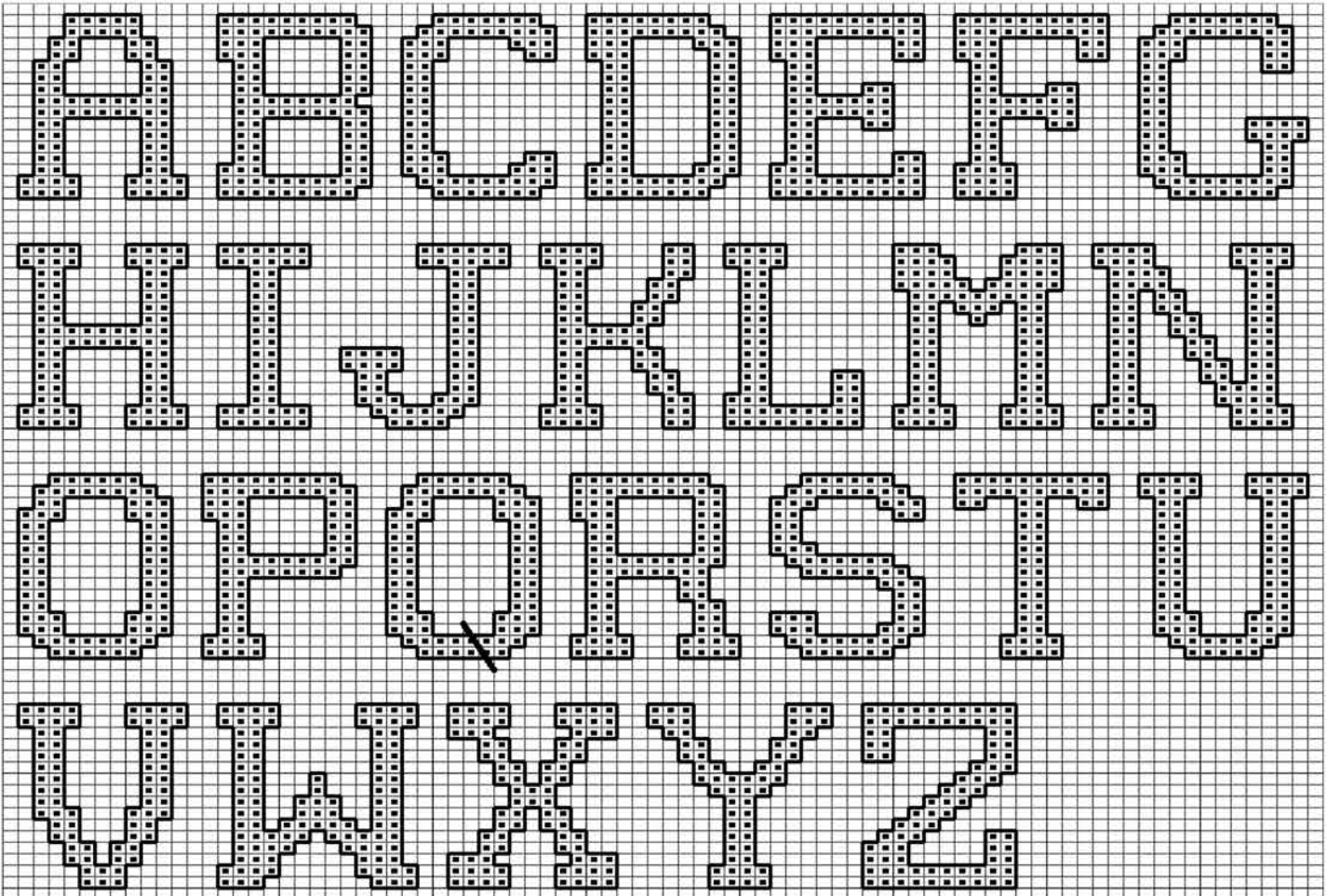
READ KNIT ROWS FROM THIS SIDE

KNIT FIRM RIBBING BEFORE STARTING GRAPH

### Numbers



### Alphabet

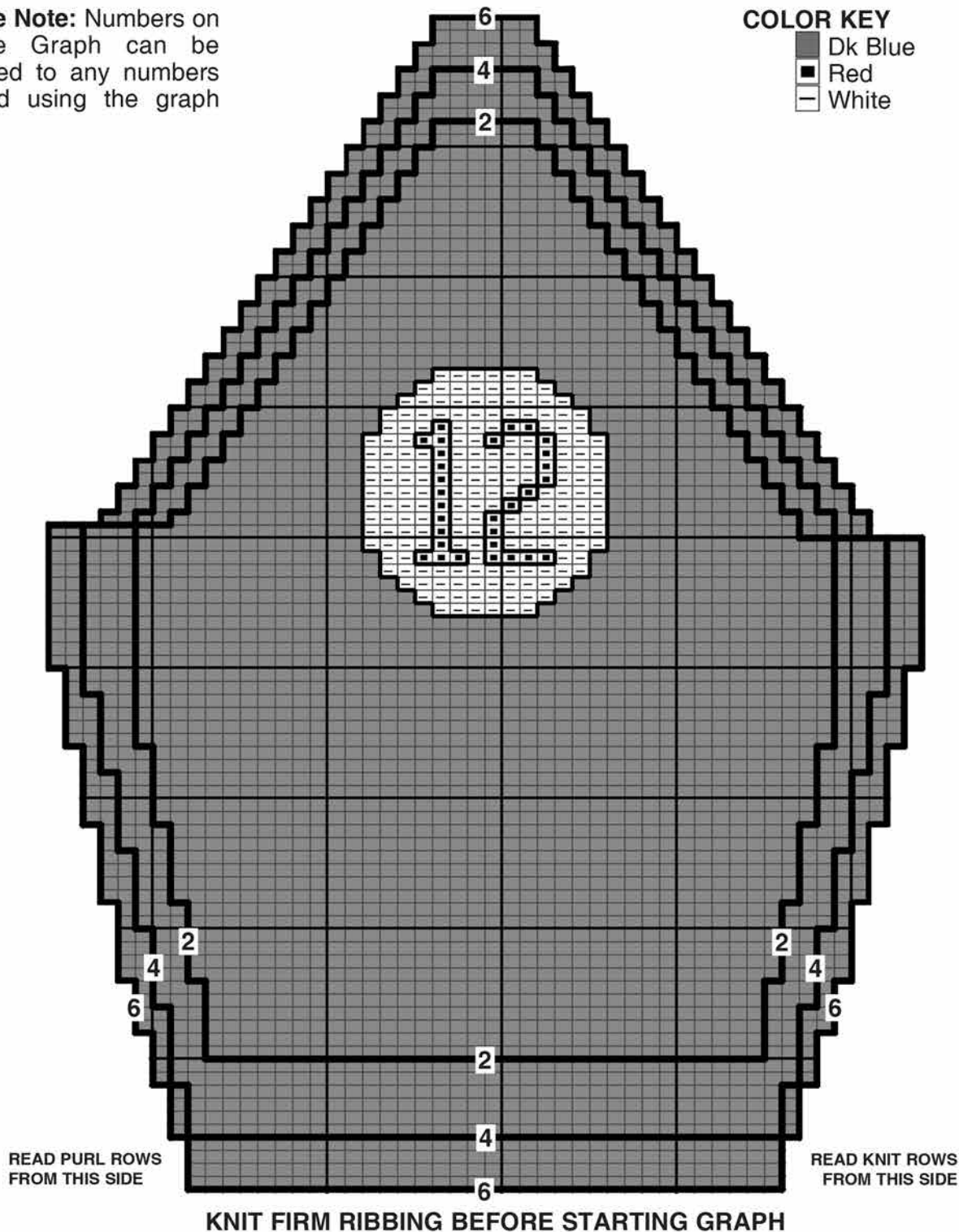


# SLEEVES

**Please Note:** Numbers on Sleeve Graph can be changed to any numbers desired using the graph given.

## COLOR KEY

- Dk Blue
- Red
- White



Every effort has been made to have the directions contained in this pattern accurate and complete; however, we cannot be responsible for misinterpretation or errors of workmanship.

Reproduction of this pattern in any form, is protected by copyright. Any infringement will lead to prosecution.

2001 HOLLAND AVE., PORT HURON, MI 48060  
75 SCOTT AVE., PARIS, ONTARIO, CANADA N3L 3G5

Yarn Imported