

SHOPPING LIST

Yarn (Worsted Weight)



Northland Worsted

[3.5 ounces, 200 yards

(100 grams, 183 meters) per ball]:

Grey Marl 2 balls

Cream 1 ball

35 yard (32 meter) pieces

Red 2 pieces

Charcoal 2 pieces

Knitting Needles

Size 6 (4.00 mm)

Size 7 (4.50 mm)

or size needed for gauge



SIZE INFORMATION

Hat Circumference:

19.5(22.5)" [49.5(57) cm]

Mittens: Palm Circumference:

8(9)" [20.5(23) cm]

GAUGE INFORMATION

20 sts and 26 rnds to 4" [10 cm]

measured over Stocking stitch using **suggested larger** needles or any size needles which will give the correct gauge.

STITCH GUIDE

st(s)	stitch(es)
cm	centimeters
mm	millimeters
k	knit
p	purl
rep	repeat or repeating
inc	increase or increasing

beg begin or beginning

tog together

sl slip

M marker

M1 Using left-hand needle, pick up horizontal strand between st just worked and next st and knit into back of loop.

ssk Slip next 2 sts knitwise to right-hand needle, then insert left-hand needle through fronts of both sts, from back to front, and k2tog.

INSTRUCTIONS

Hat:

Using larger needles and Cream, cast on 97(113) sts and work in ribbing as follows:

Row 1: (right side) K1, *p2, k2; rep from * to end.

Row 2: *P2, k2; rep from * to last st, p1.

Repeat these 2 rows twice more.

Change to Red and rep Rows 1 and 2 twice.

Change to Cream and continue ribbing as set until band measures 5" [12.5 cm], ending after a Row 1.

Now beg with a k row, proceed to follow Hat Graph in St st (one row k, one row p) as follows:

Row 1: (right side) Following Row 1 of Graph, work 16 st rep 6(7) times across, then work end st.

Row 2: Following Row 2 of Graph, work beg st, then 16 st rep 6(7) times across.

Continue in this manner, working design in "Fair Isle Stranding" method (remember always to cross yarns to avoid leaving a hole in the knitting), until 27 rows of Graph have been completed.

Using Grey Marl, purl one row, dec one st in center of row - 96(112) sts.

To Shape Crown:

Row 1: (right side) *K 10(12), k2tog; rep from * to end - 88(104) sts.

Row 2 and every alternate row: Purl.

Row 3: *K9(11), k2tog; rep from * to end - 80(96) sts

Row 5: *K8(10), k2tog; rep from * to end - 72(88) sts.

Continue dec 8 sts in this manner, having one st less in each rep on every right side row until 8 sts rem.

Cut yarn leaving a long tail for sewing. Thread tail through rem sts, draw up tightly and fasten off securely, but do not cut tail.

Using tails, sew back seam of hat, taking care with seam in ribbing as band will be turned in half to outside.

Pompom: Using a strand of all 3 colors, make a 3" [7.5 cm] pompom. Sew securely to top of Hat.

Mittens: (make a Right Mitten, then a Left Mitten)

Using smaller needles and Cream, cast on 40(44) sts and work ribbing as follows:

Row 1: *K2, p2; rep from * to end.

Repeat this row 3 times more.

Change to Red and work 4 rows of ribbing as set.

Now continue ribbing with Cream only until band measures 5" [12.5 cm], and inc one st in center of last rib row - 41(45) sts.

Change to larger needles, Grey Marl, and beg with a k row, work in St st (one row k, one row p), until 4 rows have been completed.

To Shape Thumb Gusset:

Row 1: K 20(22), place a M, M1, k1, M1, place a M, k 20(22). (3 sts for Gusset)

Row 2 and every alternate row: Purl, slipping M's.

Row 3: K to M, sl M, M1, k3, M1, sl M, k to end. (5 sts for Gusset)

Now continue in this manner, inc 2 sts on every right side row as set until there are 13(15) sts between M's and ending after a p row.

AT THE SAME TIME, when 10(14) rows of Grey Marl have been completed, beg to work Graph as follows:

For Right Mitten:

Next Row: K 0(1), work Row 1 of Graph B over 20 sts, k 0(1), sl M, inc for Thumb Gusset as before, sl M, knit to end.

For Left Mitten:

Next Row: Knit first 20(22) sts, sl M, inc for Thumb Gusset, sl M, k 0(1), work Row 1 of Graph C over next 20 sts, k 0(1).

Now continue to inc for Thumb Gusset as given above and follow Graph B where set in "Colored Pattern" knitting method, using small balls of color for each section of the design (DO NOT carry Grey Marl behind body of reindeer). Remember always to cross yarns when changing colors to avoid leaving a hole in the knitting.

Now, once all inc have been completed for the Thumb Gusset, continue as follows:

Next Row: Work over first 20(22) sts and place on a st holder, k 13(15), turn and place rem sts on st holder for the moment.

Thumb: Cast on 2 sts, purl to end - 15(17) sts.

Now beg with a k row, work in St st until Thumb measures 2(2.5)" [5(6.5 cm)], ending after a p row.

Next Row: *K2tog, k1; rep from * to last 0(2) sts, k 0(2) - 10(12) sts.

Next Row: Purl.

Next Row: [K2tog] 5(6) times - 5(6) sts. Cut yarn leaving a long tail for sewing. Thread tail through rem sts, draw up to close and fasten off securely.

Using rem tail, sew Thumb seam.

Now with right side of Mitten facing, replace first 20(22) sts to right-hand needle and unworked sts to left-hand needle.

Rejoin yarn and pick up and k2 sts at base of Thumb, then k rem 20(22) sts - 42(46) sts.

Continue in St st, working Graph B until 22 rows have been completed.

Now continue in Grey Marl only until Mitten (from beg of Grey Marl), measures 1.25(1.5)" [3(4) cm less than desired length, ending after a p row.

To Shape Top:

Next Row: [K1, k2tog, k 15(17), ssk, k1] twice - 38(42) sts.

Next Row: Purl.

Next Row: [K1, k2tog, k 13(15), ssk, k1] twice - 34(38) sts.

Next Row: Purl.

Continue in this manner, dec 4 sts on each right side row as set, until 26(26) sts rem, ending after a p row.

Next Row: K first 13 sts, leaving rem sts unworked.

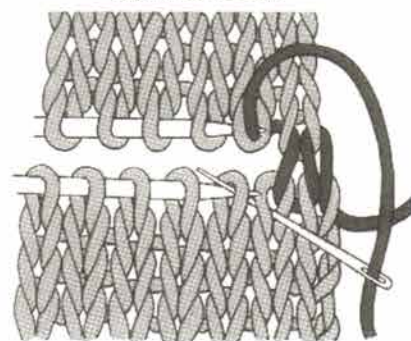
Cut yarn leaving a long tail for Grafting sts.

Fold Mitten in half, wrong side tog, making sure that points of both needles face the same direction and graft top sts closed, then sew side seam of mitten neatly.

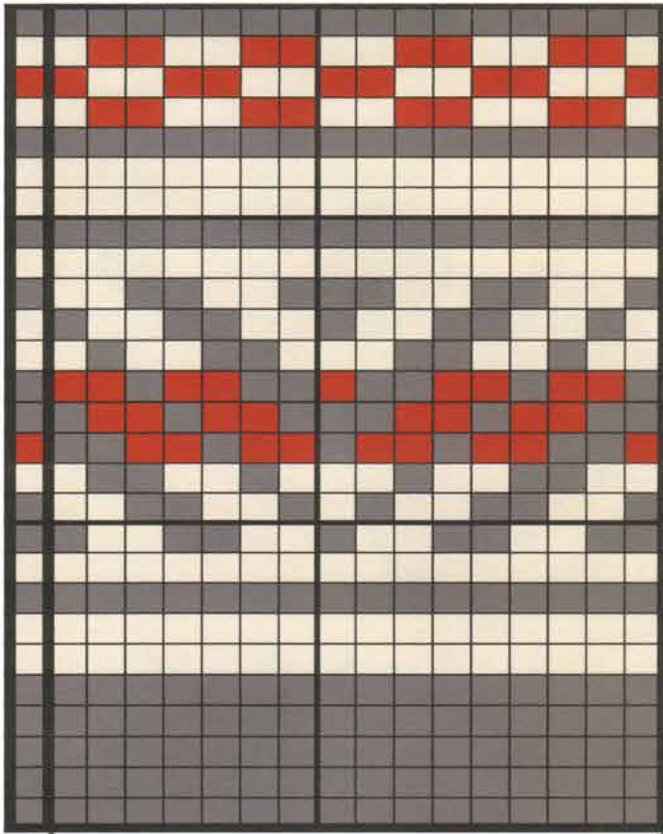
Repeat for 2nd Mitten.

Weave in all ends.

How to Graft



HAT GRAPH



Color Key

- Grey Marl
- Cream
- Charcoal
- Red

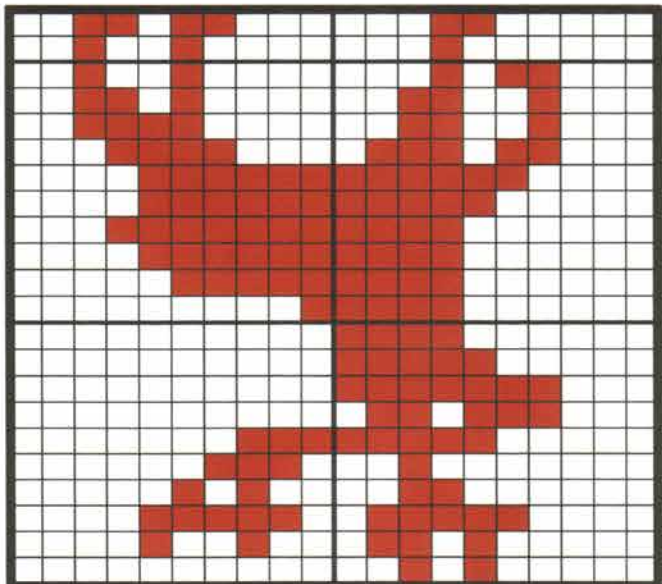
READ PURL ROWS
FROM THIS SIDE

READ KNIT ROWS
FROM THIS SIDE

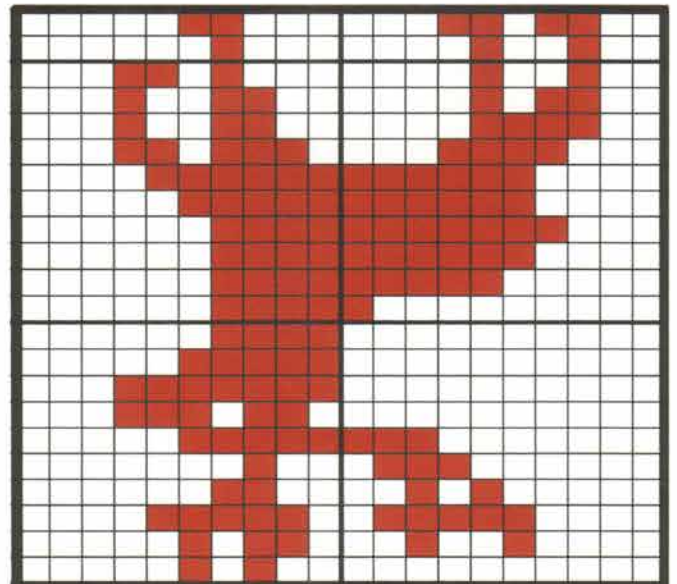
16 stitch repeat

ending or beg stitch

GRAPH C



GRAPH B

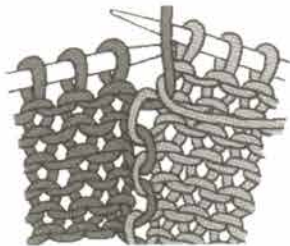


READ PURL ROWS
FROM THIS SIDE

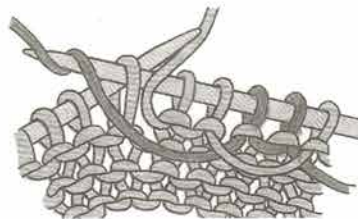
READ KNIT ROWS
FROM THIS SIDE

READ PURL ROWS
FROM THIS SIDE

READ KNIT ROWS
FROM THIS SIDE



Colored Pattern Knitting: This method is used for large areas of each color and background, using small balls of color for each area. Work required number of sts, drop color in use to be picked up on next row, bring new color under and over last color, thus avoiding a hole in the knitting.



Fair Isle Stranding: This method is used when only a few stitches of 2 or more colors are worked at one time to make design. Colors not in use are carried or woven along on wrong side as follows: For Knit Rows: Color in use is held in right hand in normal way, color carried or woven at back is held taut over middle finger of left hand, knit st in normal way. Still holding color not in use over middle finger, insert needle in next st under color being carried, knit st allowing color being carried to slip off needle and pulling color in use through st onto right hand needle. For Purl Rows: Hold yarn in the same manner, working under one st and over next with color being carried.

We have made every effort to ensure that these instructions are accurate and complete. We cannot be responsible for misinterpretation or errors in individual work. Any corrections that are discovered, will be posted on our website.

Copyright © 2014 by Mary Maxim, Inc. All rights reserved. This publication is protected under federal copyright laws. Reproduction or distribution of this publication or any other Mary Maxim publication, including publications which are out of print, is prohibited unless specifically authorized. This includes, but is not limited to, any form of reproduction or distribution on or through the Internet, including posting, scanning or e-mail transmission.

mary maxim

2001 Holland Ave., Port Huron, MI 48060;
75 Scott Ave., Paris, Ontario, CANADA N3L 3G5

Yarn Imported