

mary maxim

Magenta Mosaic Scarf

No. 96600N

Size: 8 x 63"

■■■■◻ INTERMEDIATE



Designed by Sherril Steele-Carlin

SHOPPING LIST

Yarn (Light Weight)



Mary Maxim Prism

[3.5 ounces, 290 yards

(100 grams, 265 meters) per

ball]: Wild Orchids (A) 2

balls Mary Maxim Ultra

Mellowspun [1.75 ounces, 174

yards

(50 grams, 160 meters) per ball]:

Black (B) 3 balls

Knitting Needles:

Size 7 (4.50 mm)

or size needed for gauge

SIZE INFORMATION

Finished: 8 x 63" [20.5 x 160 cm]

GAUGE INFORMATION

30 sts to 4" [10 cm] and 40 rows to 3" [7.5 cm] measured over pattern using **suggested** needles or any size needles which will give the correct gauge.

STITCH GUIDE

k	knit
p	purl
cm	centimeters
mm	millimeters
beg	begin or beginning
dec	decrease or decreasing
rnd(s)	round(s)
sl	slip
st(s)	stitch(es)
tog	together
PM	place marker
M	marker

Note:

When working Graphs, each horizontal row of squares represents 2 rows of knitting (a right side and wrong side row) and both rows are knit using the same color and slipping the same sts.

On right side rows, slip all sts purlwise with yarn to wrong side of work; on wrong side rows, bring yarn forward to slip all sts purlwise, then move yarn to back of work to knit sts. Graph includes 3 edge sts at each side of Scarf, showing black and white squares alternately.

The first and last sts indicate which color will be used to knit with, thus leaving the other color as slipped sts.

INSTRUCTIONS

Note: Carry colors neatly along side edge.

Using B, cast on 60 sts.

Knit 4 rows.

******Now work Graph A as follows:

Row 1: (*right side*) Using A, k1, sl 1 purlwise, k1 (3 edge sts), [k1, with yarn in back, sl each of next 3 sts purlwise, k3, with yarn in back, sl each of next 3 sts purlwise, k2] 4 times, k1, with yarn in back, sl each of next 3 sts purlwise, k3, sl 1 purlwise, k1.

Row 2: Using A, k1, with yarn in front, sl 1 purlwise, yarn back, k1 (3 edge sts), k2, with yarn in front, sl each of next 3 sts purlwise, yarn back, k1, [k2, with yarn in front, sl each of next 3 sts purlwise, yarn back, k3, with yarn in front, sl each of next 3 sts purlwise, yarn back, k1] 4 times, k1, with yarn in front, sl 1 purlwise, yarn back, k1.

Row 3: Using B, k1, sl 1 purlwise with yarn in back, k1, [k6, sl 1, k3, sl 1, k1] 4 times, k7, sl 1 purlwise with yarn in back, k1.

Row 4: Using B, k1, with yarn in front, sl 1 purlwise, yarn back, k7, [k1, with yarn in front, sl 1, yarn back, k3, with yarn in front, sl 1, yarn back, k6] 4 times, k1, with yarn in front, sl 1 purlwise, yarn back, k1.

Now continue in this manner, working correct row of Graph A until 24 rows of graph have been completed 3 times in all.**

Next 2 Rows: Using B, knit.

Next 2 Rows: Using A, knit.

Now proceed to work Graph B as follows:

Row 1: (*right side*) Using B, k1, with yarn in back, sl 1 purlwise, k1, [(sl 1, k2) twice, sl 1, k3, (sl 1, k2) twice, sl 2] 3 times, k1, with yarn in back, sl 1 purlwise, k1.

Row 2: Using B, k1, with yarn in front, sl 1 purlwise, k1, [with yarn in front, sl 2, yarn back, (k2, with yarn in front, sl 1, yarn back) twice, k3, (with yarn in front, sl 1, yarn back, k2) twice, with yarn in front, sl 1] 3 times, yarn back, k1, with yarn in front, sl 1 purlwise, k1. Now continue to follow Graph B, working as before until 40 rows have been completed 16 times in all.

Next 2 Rows: Using A, knit.

Next 2 Rows: Using B, knit.

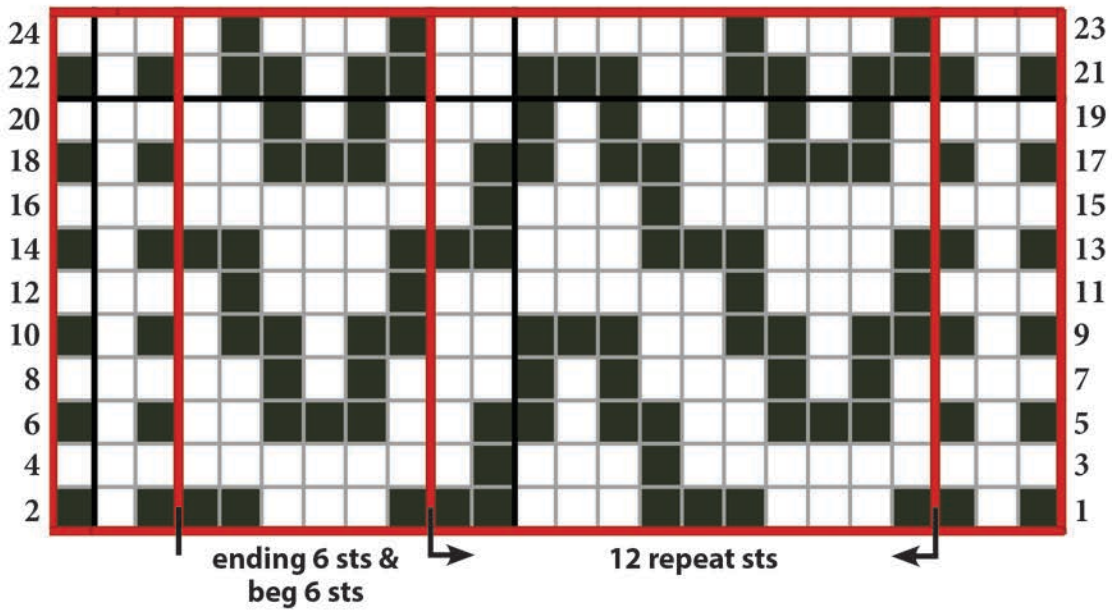
Now rep from ** to ** once more, but turn Graph A upside down and work from top to bottom in order to match design at other end.

Using B, knit 4 rows.

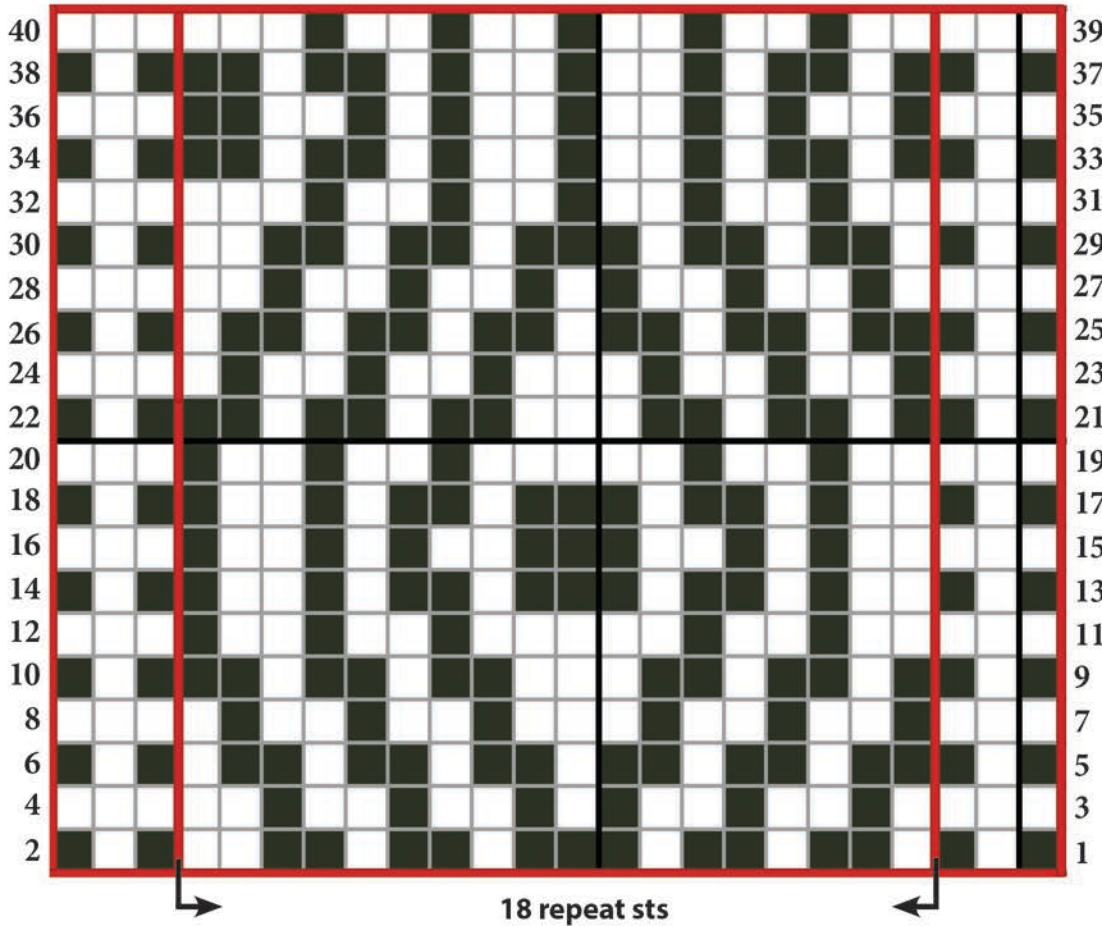
Cast off knitwise.

Weave in all ends.

GRAPH A



GRAPH B



Please note that colors reverse for this graph- dark squares are now color B!

We have made every effort to ensure that these instructions are accurate and complete. We cannot be responsible for misinterpretation or errors in individual work. Any corrections that are discovered, will be posted on our website.

Copyright © 2022 by Mary Maxim, Inc. All rights reserved. This publication is protected under federal copyright laws. Reproduction or distribution of this publication or any other Mary Maxim publication, including publications which are out of print, is prohibited unless specifically authorized. This includes, but is not limited to, any form of reproduction or distribution on or through the Internet, including posting, scanning or e-mail transmission.

mary maxim

2001 Holland Ave., Port Huron, MI 48060;
75 Scott Ave., Paris, Ontario, CANADA N3L 3G5

Yarn Imported